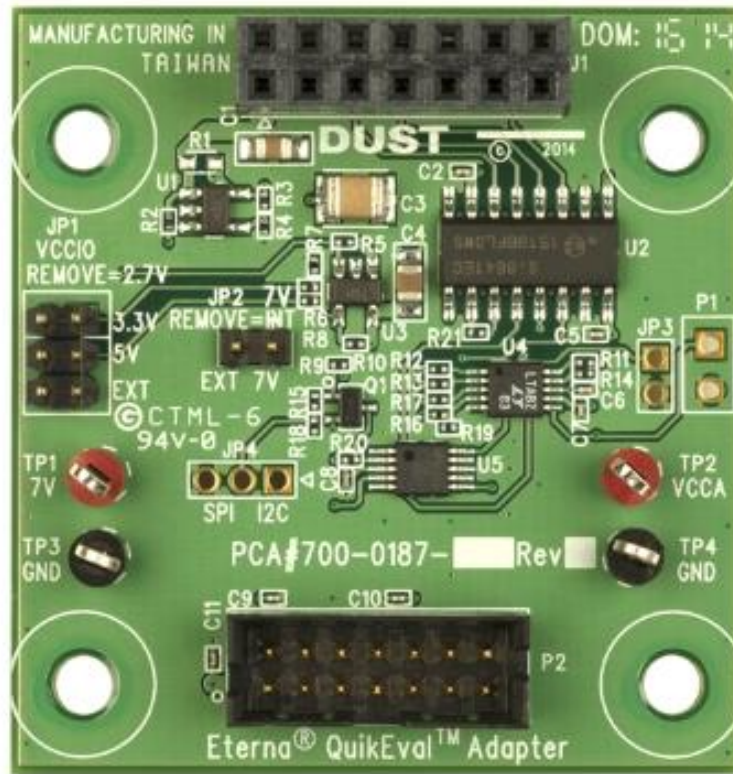




DC9005B - Eterna QuikEval Adapter



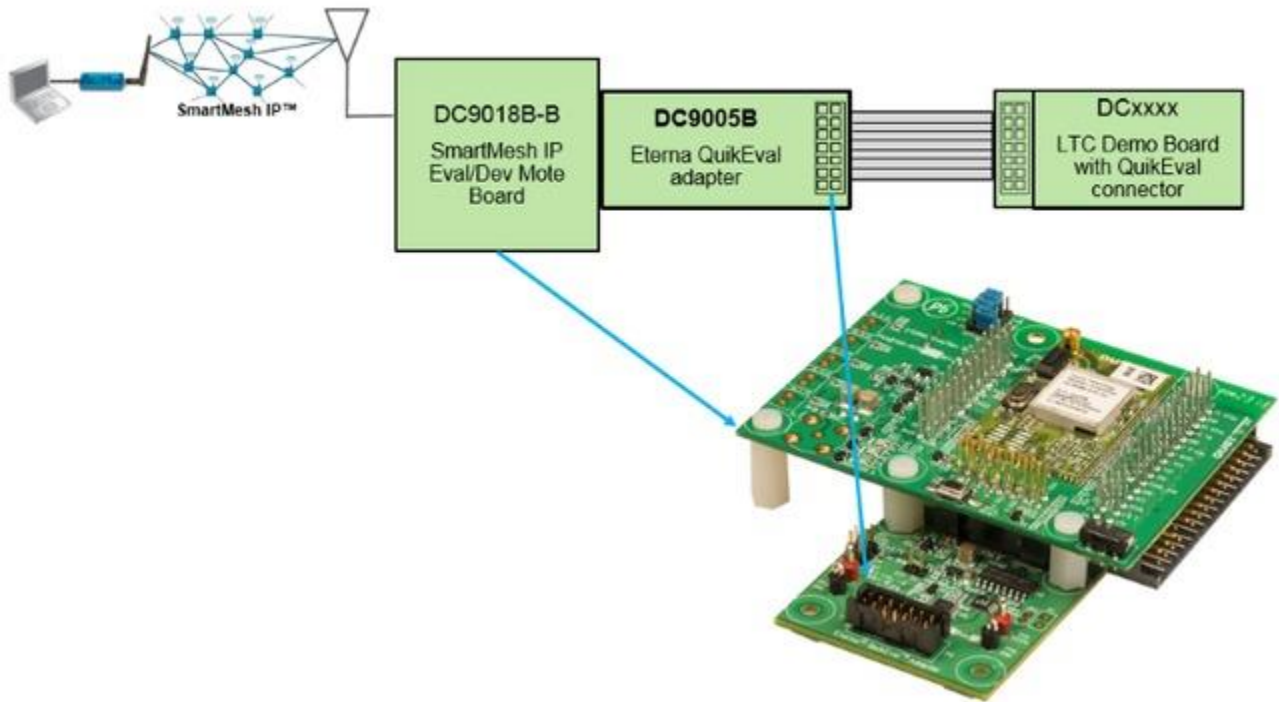
DC9005B Eterna QuikEval Adapter

The DC9005B Eterna QuikEval Adapter card makes it easy to connect the DC9018B-B SmartMesh IP Evaluation/Development Mote to [QuikEval enabled demo boards](#).

Users can program a SmartMesh IP mote (e.g. DC9018B-B) with the [SmartMesh IP On-Chip SDK](#). In the diagram below, the DC9018B-B can act as an SPI or I2C master to the DCxxxx Demo board.

The DC9005B is available individually, or as a part of the [DC9021B SmartMesh IP Starter Kit](#).

Click [here](#) to read an example of connecting a ThermoCouple to a SmartMesh IP mote.



DC9005B Example Usage