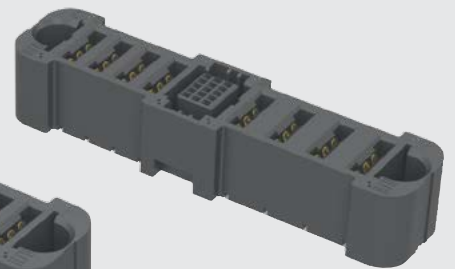




**POWER™ EXTreme  
STRIP™ Ten60**

ET60S-D04-3-08-A04-L-V1-S



ET60S-A04-5-03-D04-L-VP-S

**ET60S SERIES**

**(5.50 mm) .217" (PWR) (2.54 mm) .100" (SIG)**

# VERTICAL POWER/SIGNAL SOCKET

**Mates with:**  
ET60T

**SPECIFICATIONS**

For complete specifications and recommended PCB layouts see [www.samtec.com?ET60S](http://www.samtec.com?ET60S)

**Insulator Material:**

Black LCP

**Terminal Material:**

Signal: Copper Alloy

Power: Copper Alloy

**Plating:**

Au or Sn over

50 μm (1.27 μm) Ni

**Current Rating:**

Power: 60 A max per blade

(2 pins powered @ 95 °C;

30 °C temperature rise)

Signal: 2.8 A max

(6 pins powered @ 95 °C;

30 °C temperature rise)

**Operating Temp Range:**

-40 °C to +105 °C

**RoHS Compliant:**

Yes

**PROCESSING**

**Lead-Free Solderable:**

Yes

**RECOGNITIONS**

For complete scope of recognitions see [www.samtec.com/quality](http://www.samtec.com/quality)



FILE NO. E111594

**ALSO AVAILABLE  
(MOQ Required)**

- Increased creepage and clearance with the removal of contacts
- Contact Samtec.

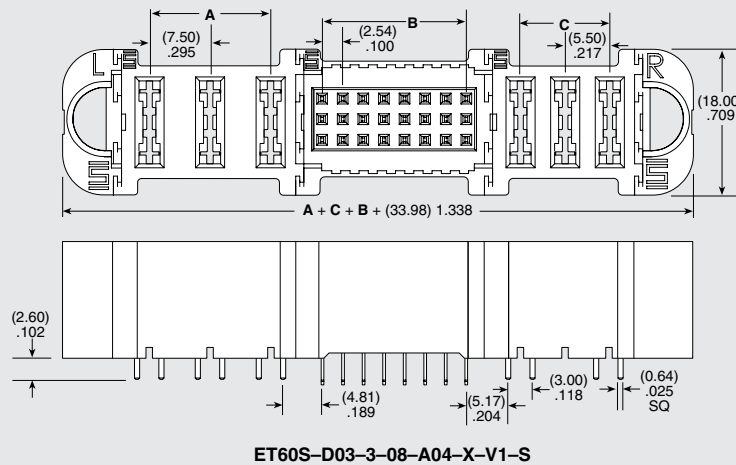
**Notes:**

Some lengths, styles and options are non-standard, non-returnable.

EXTreme Ten60Power™ is a trademark of Molex Incorporated and is dual sourced by Molex®

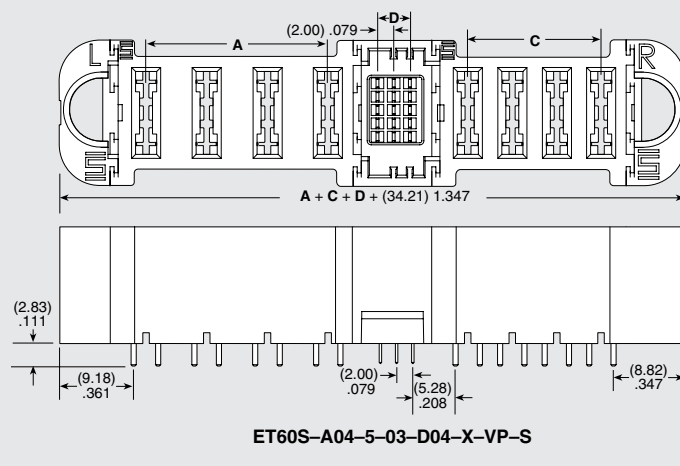
ET60S	POWER OPTION (RIGHT)	ROWS	SIGNAL POSITIONS PER ROW
	<p><b>-AXX*</b> = AC Power Positions (-02, -03, -04, -05, -06 positions only)</p> <p><b>-DXX</b> = DC Power Positions (-02, -03, -04, -05, -06, -07, -08, -09, -10 positions only)</p> <p><b>-SXX*</b> = Split Power</p> <p><b>-000</b> = No Power</p>	<p><b>-0</b> = No Signal</p> <p><b>-3</b> = 3 Rows</p> <p><b>-5*</b> = 5 Rows</p>	<p><b>-02, -04, -06, -08, -10, -12</b> (3 Row only)</p> <p><b>-01, -02, -03, -04, -05, -06, -07, -08</b> (5 Row only)</p> <p><b>-00</b> = No Signal</p>

**Note:**  
-AXX\*, -SXX\*, -5\* & -T\* are Preliminary

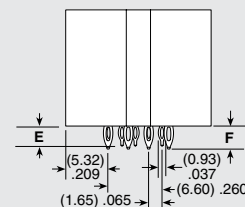


POWER POSITIONS (LEFT)	POWER POSITIONS (RIGHT)	A AC POWER	C DC POWER
-02	-02	** (7.50) .295	(5.50) .217
-03	-03	** (15.00) .591	(11.00) .433
-04	-04	** (22.50) .886	(16.50) .650
-05	-05	** (30.00) 1.181	** (22.50) .886
-06	-06	** (37.50) 1.476	** (27.50) 1.083
-07	-07	N/A	** (33.00) 1.299
-08	-08	N/A	** (38.50) 1.516
-09	-09	N/A	** (44.00) 1.732
-10	-10	N/A	(49.50) 1.949

\*\*Not Released



TAIL	3 ROWS		5 ROWS	
	E	F	E	F
-VP	(3.28) .129	(2.83) .111	(2.83) .111	(2.50) .098
-V1		(2.60) .102		N/A



Due to technical progress, all designs, specifications and components are subject to change without notice.



(5.50 mm) .217" (PWR) (2.54 mm) .100" (SIG)

ET60S-D04-3-08-A04-L-R1-S

ET60S SERIES

# RIGHT-ANGLE POWER/SIGNAL SOCKET

## POWER OPTION (LEFT)

### -AXX\*

= AC Power Positions  
(-02, -03, -04, -05, -06 positions only)

### -DXX

= DC Power Positions  
(-02, -03, -04, -05, -06, -07, -08, -09, -10 positions only)

### -SXX\*

= Split Power

### -000

= No Power

## PLATING

### -L

= 10 μ" (0.25 μm) Gold on contact,  
Matte Tin on tail  
(Not available for 5 rows)

### -S

= 30 μ" (0.76 μm) Gold on contact,  
Matte Tin on tail

## TAIL

### -VP

= Vertical Press-fit

### -V1

= Vertical through-hole  
(Use with (1.60 mm) .062" thick card)  
(3 Row only)

### -R1

= Right-angle through-hole  
(Use with (1.60 mm) .062" thick card)

## GUIDE POST

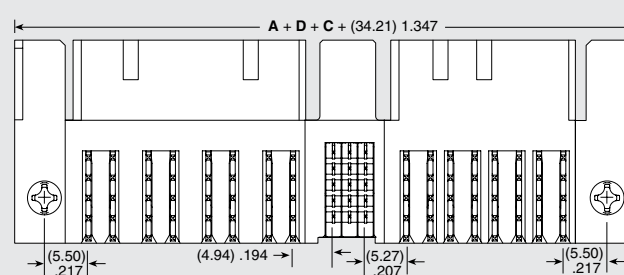
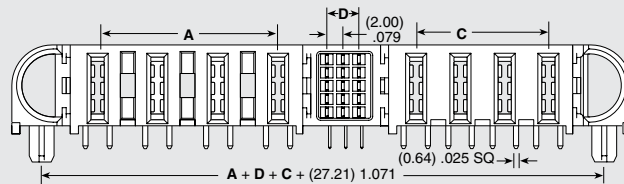
### -S

= Side  
Guide Post

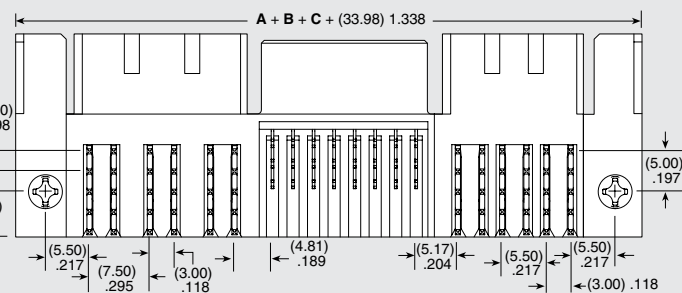
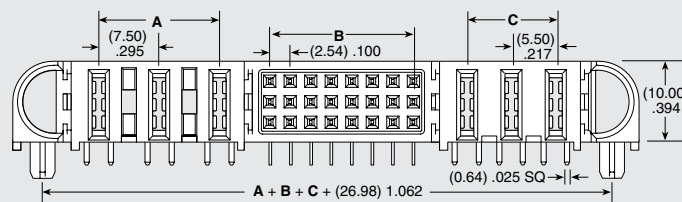
### -T\*

= Top  
Guide Post

**Note:**  
-AXX\*, -SXX\*, -5\* & -T\* are Preliminary



ET60S-D04-5-03-A04-X-R1-S



ET60S-D03-3-08-A03-X-R1-S

SIGNAL POSITIONS PER ROW (3 Row)	B	SIGNAL POSITIONS PER ROW (5 Row)	D
*-02	(2.54) .100	**-01	N/A
		**-02	(2.00) .079
*-04	(7.62) .300	**-03	(4.00) .157
		*-04	(6.00) .236
*-06	(12.70) .500	**-05	(8.00) .315
-08	(17.78) .700	**-06	(10.00) .394
*-10	(22.86) .900	**-07	(12.00) .472
*-12	(27.94) 1.100	**-08	(14.00) .551

\*Not Tooled  
\*\*Not Released

TAIL	E	F
R1	(2.84) .112	