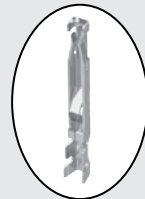


MCRK-8-S



CC393-2830-L-S

MCRK, CC393 SERIES

8 SERIES IP67 FIELD TERMINATION KIT

Mates with:
MCP(K)

SPECIFICATIONS

For complete specifications see www.samtec.com?MCRK

Insulator Material:
PPS

Contact Material:
Phosphor Bronze

Operating Temp Range:
-20 °C to +80 °C

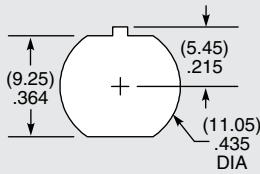
Gasket Material:
Neoprene Rubber

Lock Washer:
Phosphor Bronze, Ni plated

Hex Nut:
Brass, Ni plated

RoHS Compliant:
Yes

PANEL OPENING



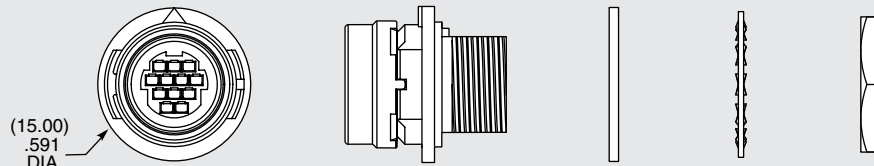
Note: Samtec's MCRK Series is dual sourced by Hirose Electric Co., LTD.



DUST CAPS

- DCA-MCR-8

Visit sealedio.samtec.com for a complete list of sealed systems



SPECIFICATIONS

For complete specifications see www.samtec.com?CC393

Plating:
10 µm (0.25 µm) Gold on contact

TOOLING

- Hand tool:
CAT-HT-393-2430-13
- Mini Applicator (28-30 AWG):
CAT-MA-393-2830-XX-01
- Extraction Tool:
CAT-EX-MCX-8-01



CC393
= Contact

-2830
= 28 to 30 AWG

-S
= Strip (15 contacts)

-M
= Mini Reel (1,000 - 5,000 contacts)

-R
= Reel (20,000 contacts)

