

# EAO – Your Expert Partner for Human Machine Interfaces

704.066.2A - Emergency-stop switch, foolproof EN 60947-5-5 ISO 13850

**704.066.2 - Emergency-stop switch actuator,  
foolproof EN IEC 60947-5-5 to ISO 13850**



## Mounting

Mounting cut-out Ø 22.5 mm  
Design raised

## Front

Front shape round  
Front dimension Ø 37 mm

## Other Attributes

Marking Red Raised Arrows  
Weight 0.300 kg

## Operating-/Indication part

Lens material Plastic  
Lens optics opaque  
Lens profile Mushroom  
Lens colour red

## IP-Rating

Front protection IP65

## Actuator

Switching action Maintained

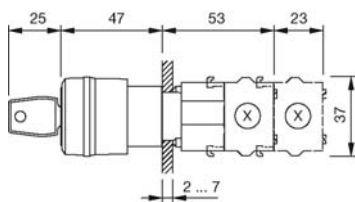
## Function

Emergency stop switch

# EAO – Your Expert Partner for Human Machine Interfaces

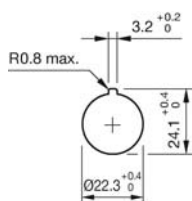
704.066.2A - Emergency-stop switch, foolproof EN 60947-5-5 ISO 13850

## Dimensions

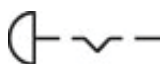


X = Screw terminal

## Mounting cut-outs



## Wiring diagram



## Additional information

Shaft yellow  
Key to unlock anti-clockwise  
Lock type Euro-Locks 9500  
Two keys are supplied with each key lock switch  
Optional lock numbers on request  
Max. 3 slow-make elements can be clipped on  
Application as per DIN EN ISO 13850 and EN 60204-1

## Legend

Switching action: C = Maintained