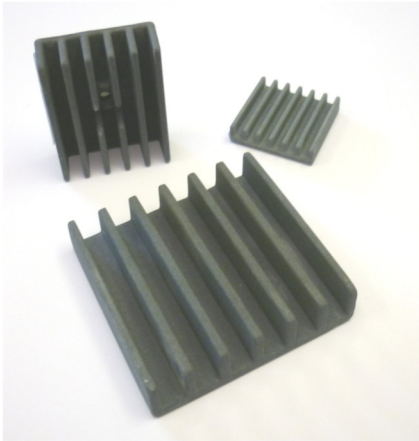


## Micro Porous Finned Ceramic Heat Sink

### FCH Series

#### Features

- Light weight
- Non metallic
- Low cost
- Higher power than flat types



The FCH micro porous ceramic finned heat sinks are constructed from entirely new material structure that moves heat by air circulation (without external force). Due to its micro-porous nature it provides a vast surface area compared with traditional heat sinks which ensures highly efficient heat dissipation. A ceramic heat sink is non-electrically conductive, thereby ensuring no antenna effect; light in weight; lower in price compared to aluminium and Copper heat sinks. The special material nature ensure they are not affected by humidity and dust. The extremely strong bond of the adhesive tape means they can be fixed direct to the surface of any IC component and there by reducing assembly time and labour costs. The raised fins provides a greater surface area compared to flat type ceramic heat sinks and therefore a greater power dissipation of up to 10W can be achieved.

Part Number	Length (mm)	Width (mm)	Height (mm)
FH25255T	25	25	5.0
FCH30305T	30	30	5.25
FCH303512T	35	30	12.25
FCH40405T	40	40	5.25
FCH505010T	50	50	10.25
FCH505015T	50	505	15.25

#### AMEC Thermasol

1-2 Steam Mill Lane, Great Yarmouth, Norfolk, NR31 0HP

Telephone: +44(0) 1493 668622 Fax: +44(0) 1493 668623

Email: [sales@amecthermasol.co.uk](mailto:sales@amecthermasol.co.uk) Website: [www.amecthermasol.co.uk](http://www.amecthermasol.co.uk)