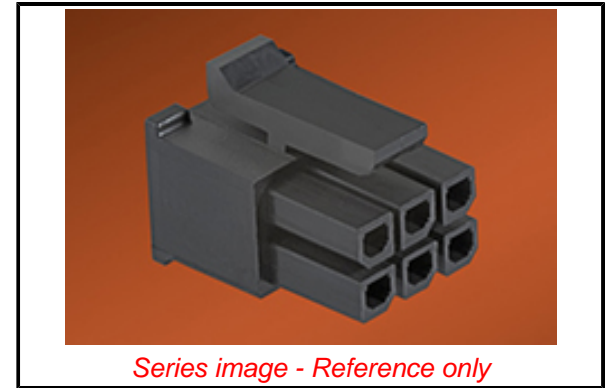


**PLEASE CHECK WWW.MOLEX.COM FOR LATEST PART INFORMATION**

**Part Number:** **0430250600**  
**Status:** **Active**  
**Overview:** Micro-Fit 3.0™ Connectors  
**Description:** Micro-Fit 3.0™ Receptacle Housing, Dual Row, 6 Circuits, UL 94V-0, Low-Halogen, Black

**Documents:**

|  |  |
|--|--|
| <a href="#">3D Model</a>                                     | <a href="#">Product Specification TS-46235-001-001 (PDF)</a>   |
| <a href="#">Drawing (PDF)</a>                                | <a href="#">Packaging Specification PK-43025-001-001 (PDF)</a> |
| <a href="#">Product Specification PS-43045 (PDF)</a>         | <a href="#">RoHS Certificate of Compliance (PDF)</a>           |
| <a href="#">Product Specification TS-43045-001-001 (PDF)</a> | <a href="#">Product Literature (PDF)</a>                       |



*Series image - Reference only*

**Agency Certification**

|     |         |
|-----|---------|
| CSA | LR19980 |
| UL  | E29179  |

**General**

|                             |   |
|-----------------------------|---|
| Product Family              | Crimp Housings                            |
| Series                      | <a href="#">43025</a>                     |
| Application                 | Power, Wire-to-Board, Wire-to-Wire        |
| Overview                    | <a href="#">Micro-Fit 3.0™ Connectors</a> |
| Product Literature Order No | 987650-5984                               |
| Product Name                | Micro-Fit 3.0™                            |
| UPC                         | 800753683617                              |

**Physical**

|                               |                 |
|-------------------------------|-----------------|
| Circuits (maximum)            | 6               |
| Color - Resin                 | Black           |
| Flammability                  | 94V-0           |
| Gender                        | Female          |
| Glow-Wire Compliant           | No              |
| Keying to Mating Part         | None            |
| Lock to Mating Part           | Yes             |
| Material - Resin              | Nylon           |
| Net Weight                    | 0.570/g         |
| Number of Rows                | 2               |
| Packaging Type                | Bag             |
| Panel Mount                   | No              |
| Pitch - Mating Interface      | 3.00mm          |
| Polarized to Mating Part      | Yes             |
| Stackable                     | No              |
| Temperature Range - Operating | -40°C to +105°C |

**Solder Process Data**

|                             |     |
|-----------------------------|-----|
| Lead-freeProcess Capability | N/A |
|-----------------------------|-----|

**Material Info**

**Reference - Drawing Numbers**

|                         |  |
|-------------------------|--|
| Packaging Specification | PK-43025-001-001                             |
| Product Specification   | PS-43045, TS-43045-001-001, TS-46235-001-001 |
| Sales Drawing           | SDA-43025-****, SDES-43025-1000              |

**EU ELV**

**Not Relevant**

**EU RoHS**

**Compliant**

**REACH SVHC**

Not Contained Per  
-ED/01/2017 (12  
January 2017)

**Halogen-Free**

**Status**

**Low-Halogen**

**Need more information on product environmental compliance?**

Email [productcompliance@molex.com](mailto:productcompliance@molex.com)  
Please visit the [Contact Us](#) section for any non-product compliance questions.

|                 |               |
|-----------------|---------------|
| China ROHS      | Green Image   |
| ELV             | Not Relevant  |
| RoHS Phthalates | Not Contained |

**Search Parts in this Series**

[43025](#) Series

**Mates With**

Micro-Fit 3.0™ Plug Housings [43020](#) ,  
Micro-Fit 3.0™ Headers [43045](#) , Micro-Fit  
3.0™ Test Plug [44242](#)

**Use With**

Micro-Fit 3.0™ Female Crimp Terminals  
[43030](#) , [45773](#) , Micro-Fit RMF™ Female  
Crimp Terminals [46235](#)