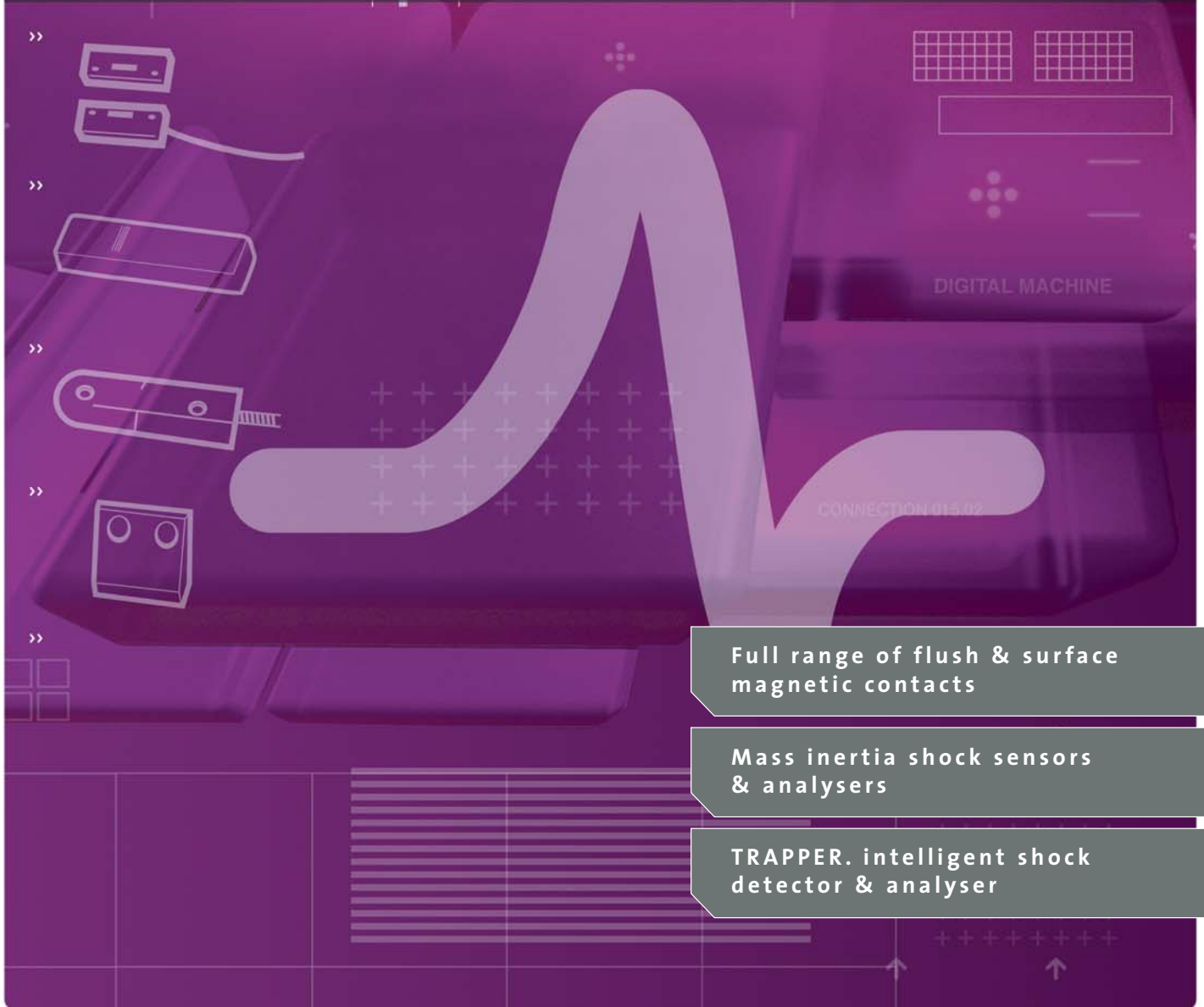


# CQR | DETECTION



Full range of flush & surface magnetic contacts

Mass inertia shock sensors & analysers

TRAPPER. intelligent shock detector & analyser

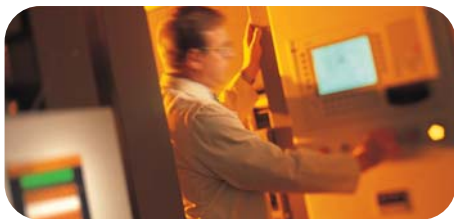
[www.cqr.co.uk](http://www.cqr.co.uk)



INNOVATIVE SOLUTIONS

# CQR | DETECTION

CONNECTION 015.02



CQR is one of the major manufacturers of security products in the UK, and as a leading supplier to the European security industry, has consistently been at the forefront of traditional and new product development since opening for business way back in the early eighties.

The CQR brand is recognised worldwide and has become synonymous with quality and reliability. CQR branded products are all designed with ease of installation and use in mind and meet many product standards worldwide, including also full compliance to ISO 9001:2000.

Now part of the OSL Group, CQR continues to bring new products to market, backed up by a sales and support service, we believe is second to none.

This Technical Data Sheet reflects our 'modern' approach to our industry and provides you with all the information you need on this section of our extensive range.

*All CQR's detection products are designed for Consistency, Quality and Reliability. Their proven track record over many years means they can be fitted as part of any installation with confidence, ensuring that top quality, reliable products are consistent throughout the system.*

*The useful 'at a glance' tables on the back of this leaflet gives you all the performance data you need to choose the right products for the job. This includes our unique range of mass inertia shock sensors and TRAPPER, the intelligent shock detector & analyser.*

*All of CQR Detection products are available from a wide range of specialist security Distributors who, together with our own technical back up, provide an excellent after-sales service as and when required.*

*However, should you require further information on any product in this leaflet, please give our Technical Support Team a call on +44(0)151 606 6311.*



## FLUSH CONTACTS



FC504/WH -  
FC505/WH

Magnetic contacts which can be flush fitted for maximum discretion. The range includes plastic and metal fronted types, some of which are pre-wired for easy installation.



FC503/WH



FC509/MT/2



FC620/WH



FS610/WH

## SURFACE CONTACTS



SC516/WH -  
SC517/WH

A range of contacts in plastic and aluminium which can be surface mounted and which will suit most domestic and commercial installations.



SC525/WH/4C



SC513/WH/4C



SC555/AL/4C



SC550/WH

## HEAVY DUTY CONTACTS

A range of aluminium pre-wired contacts some of which are fitted with two reeds for additional security.



GP001 - GP002



RS002/ALI



RS005/ALI



RS001 /BK

## WINDOW FOIL

A range of self adhesive aluminium foil and terminal blocks for use on windows.



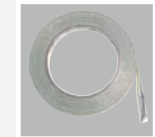
SHORT PLATE  
FB722



EXTENDED PLATE  
FB724



FOIL BLOCK COVER  
FB726



FOIL  
FB725/50

## SHOCK SENSORS

A range of mass inertia shock sensors which can be used either with the TRAPPER or with other separate analysers or those integrated into control panels.

SD1/WH - Flush mounted sensor, requiring a 13mm hole  
SD3/WH - Surface sensor in tampered junction box can be mounted in any place  
SD4/WH - As above, with the addition of a reed switch and magnet



SD1/WH



SD3/WH



SD4/WH

## ANALYSERS

A range of analysers designed to work with CQR shock sensors. They use the well-proven Time/Pulse integrator type of system, designed to match various forced-entry modes but without complex setting



MA100T



MA350

## TRAPPER



Trapper uses the well proven mass inertia shock sensor module giving superior stability and performance over all building materials.

The unique crow bar leverage action in the design of the CQR sensor means that the moving mass weight is lighter than that of other sensors, thus making it less sensitive to wind and traffic generated vibrations.

The wiping action of the hard gold crosspoint bars makes the sensor self cleaning and highly resistant to contact degradation.

### FEATURES:

- PIC microchip controller
- Auto learn sensitivity control
- Tri-colour LED status indication
- Time window pulse count
- Sequential alarm memory for units 1-10
- Digital sensitivity adjustment using jumpers
- Slave sensor facility

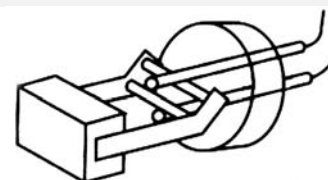
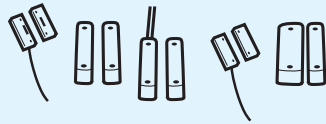


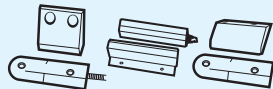
Illustration simplified to demonstrate principle



### FLUSH CONTACTS



### SURFACE CONTACTS



### HEAVY DUTY CONTACTS



### WINDOW FOIL

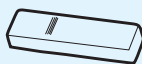


### ANALYSERS



### SHOCK SENSORS

SD1/WH W: 15mm H: 15mm D: 18mm  
 SD3/WH W: 29mm H: 51mm D: 17mm  
 SD4/WH W: 29mm H: 51mm D: 17mm  
 magnet W: 10mm H: 50mm D: 12mm



### TRAPPER

W: 21mm H: 25mm D: 92mm



CQR Security

125 Pasture Road, Moreton, Wirral


United Kingdom, CH46 4TH

Tel: +44(0)151 606 1000

Fax: +44(0)151 606 1122

Email: info@cqr.co.uk

www.cqr.co.uk

A member of 

## FLUSH CONTACTS AT A GLANCE

	Connections	Reed Switches	Pull-in gap	Material	Size mm	Contact form	Voltage range	Switching current	Contact Material	Colours
FC503	4 wire	1	15mm	Polystyrene	9.5 Dia x 25	SPST form A	1-50VDC	500mA	Rhodium	White
FC504	5	1	18mm	Polystyrene	19 Dia x 15 35 x 22	SPST form A	1-50VDC	500mA	Rhodium	White
FC505	5	1	23mm	Polystyrene	19 Dia x 15 35 x 22	SPST form A	1-50VDC	500mA	Rhodium	White / Brown
FC509/MT/2	6	2	25mm	Polystyrene / Metal	25 Dia x 13 57 x 32	SPST form A	1-50VDC	500mA	Rhodium	White
FS610	3m 4 core	1	15mm	Polystyrene	6 Dia x 26	SPST form A	1-50VDC	500mA	Rhodium	White
FC620	3m 4 core	1	15mm	Polystyrene	Contact: 9.5 Dia x 33 Adaptor: 25 Dia x 20	SPST form A	1-50VDC	500mA	Rhodium	White

## SURFACE CONTACTS AT A GLANCE

	Connections	Reed Switches	Pull-in gap	Material	Size mm	Contact form	Voltage range	Switching current	Contact Material	Colours
SC513	1m 4 core	1	20mm	Polystyrene	65 x 13.5 x 13	SPST form A	1-50VDC	500mA	Rhodium	White
SC516	5	1	15mm	Polystyrene	65 x 13.5 x 13	SPST form A	1-50VDC	500mA	Rhodium	White/Brown
SC517	5	1	20mm	Polystyrene	65 x 13.5 x 13	SPST form A	1-50VDC	500mA	Rhodium	White/Brown
SC525	1m 4 core	1	20mm	Polystyrene	38 x 15 x 8	SPST form A	1-50VDC	500mA	Rhodium	White/Brown
SC550	6	1	30mm	Polystyrene	85 x 25 x 20	SPST form A	1-50VDC	500mA	Rhodium	White/Brown
SC555	1m 4 core	1	20mm	Aluminium	43 x 17 x 10	SPST form A	1-50VDC	500mA	Rhodium	Aluminium
FS610	3m 4 core	1	15mm	Polystyrene	6 Dia x 26	SPST form A	1-50VDC	500mA	Rhodium	White

## HEAVY DUTY CONTACTS AT A GLANCE

	Connections	Reed Switches	Pull-in gap	Material	Size mm	Contact form	Voltage range	Switching current	Contact Material	Colours
RS001	0.5m armoured cable	1	30mm	Polystyrene	150 x 50 x 10	SPST form A	1-50VDC	500mA	Rhodium	Black
RS002	0.5m flexible armoured cable	1	65mm	Aluminium	175 x 50 x 15	SPST form A	1-50VDC	500mA	Rhodium	Aluminium
RS002 1M	1m flexible armoured cable	1	65mm	Aluminium	175 x 50 x 15	SPST form A	1-50VDC	500mA	Rhodium	Aluminium
RS002	0.5m flexible armoured cable	1	50mm	Aluminium	130 x 10 x 45	SPST form A	1-50VDC	500mA	Rhodium	Aluminium
GP001	0.5m flexible armoured cable	1	50mm	Aluminium	80 x 15 x 27	SPST form A	1-50VDC	500mA	Rhodium	Aluminium
GP002	0.5m flexible armoured cable	2	50mm	Aluminium	80 x 15 x 27	SPST form A	1-50VDC	500mA	Rhodium	Aluminium

## ANALYSERS AT A GLANCE

	Supply Voltage	Supply Current	Sensor loops	Indicators	Sensitivity	Reset	Alarm relay	Tamper Switch	Size mm
MA100	10.5 - 15 vdc	30mA	1	1	1	Auto	open on alarm, 1 amp, 60v	250 v 1A	80 x 53 x 25
MA350	10.5 - 15 vdc	88mA	3	3	3	Auto	open on alarm, 1 amp, 60v	250 v 1A	127 x 89 x 25
TRAPPER	10.5 - 15 vdc	17mA	1	tri colour	Auto/manual	Auto/ manual	open on alarm, 1 amp, 60v	250 v 1A	21 x 25 x 92

distributed by:



**SINGLE PUSH PERSONAL ATTACK BUTTON**

W: 180mm H: 306mm D: 58mm



**DOUBLE PUSH PERSONAL ATTACK BUTTON**

W: 180mm H: 306mm D: 58mm



**PA PLUS SINGLE PUSH PERSONAL ATTACK BUTTON**

W: 180mm H: 306mm D: 58mm



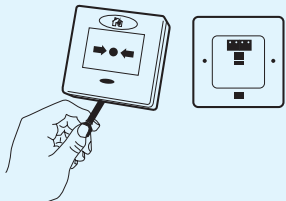
**PA PLUS DOUBLE PUSH PERSONAL ATTACK BUTTON**

W: 180mm H: 306mm D: 58mm



**FP2 RESETTABLE CALL POINTS**

W: 87mm H: 87mm D: 55mm



**FP3 MANUAL CALL POINT**

W: 180mm H: 306mm D: 55mm



CQR Security

125 Pasture Road, Moreton, Wirral

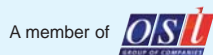
United Kingdom, CH46 4TH

Tel: +44(0)151 606 1000

Fax: +44(0)151 606 1122

Email: info@cqr.co.uk

www.cqr.co.uk



**PERSONAL ATTACK POINTS AT A GLANCE**

	Operation	Material	Switch	Configuration (open/closed)	terminals	Tamper	Reset	Indicator	Backlit	max Voltage	Max Current
PASP1	Single	polystyrene	Reed	Selectable	5		Latch	Yes		50vdc	500mA
PASP1/BS	Single	ABS	Reed	Selectable	5		Latch	Yes		50vdc	500mA
PASP1/SS	Single	ABS	Reed	Selectable	5		Latch	Yes		50vdc	500mA
PA614/SS	Single	ABS	Reed/Contact	Selectable	5		Latch	Yes		50vdc	500mA
PADP2/WH	Double	ABS	Reed	Selectable	5		Latch	Yes		50vdc	500mA
PADP2/SS	Double	ABS	Reed	Selectable	5	Yes	Latch	Yes		50vdc	500mA
EPA/STD	Double	ABS	Reed	Selectable	7	Yes	Latch	Yes		50vdc	500mA
PAPLUSSP/WH	Single	ABS	Reed	Selectable	5		Latch	Yes		50vdc	500mA
PAPLUSSP/WH/LED	Single	ABS	Reed	Selectable	5		Latch	Yes	Yes	50vdc	500mA
PAPLUSSP/SS	Single	ABS	Reed	Selectable	5		Latch	Yes		50vdc	500mA
PAPLUSSP/SS/LED	Single	ABS	Reed	Selectable	5		Latch	Yes	Yes	50vdc	500mA
PAPLUSDP/WH	Double	ABS	Reed	Selectable	5		Latch	Yes		50vdc	500mA
PAPLUSDP/WH/LED	Double	ABS	Reed	Selectable	5		Latch	Yes	Yes	50vdc	500mA
PAPLUSDP/SS	Double	ABS	Reed	Selectable	5	Yes	Latch	Yes		50vdc	500mA
PAPLUSDP/SS/LED	Double	ABS	Reed	Selectable	5	Yes	Latch	Yes	Yes	50vdc	500mA

**CALL POINTS AT A GLANCE**

	External dimensions (mm)	Surface mounted depth with backbox (mm)	Flush mounted depth without backbox (mm)	Monitoring resistors	Blocking diode	Microswitch rating	Activation indicator	Material	Complies with
FP2	87x87	55	20	470, 680 ohm	IN4001	5A 30 vdc	Fluorescent yellow indicator in window optional LED	Housing ABS, window polycarbonate	IP-44
FP3	85x85	55	20	470, 680 ohm	IN4001	12A 50V	Window displacement, fluorescent yellow indicator in window, high visibility 180° LED	Housing ABS, window glass or polycarbonate	EN54-11

**DATA SHEETS ALSO AVAILABLE:**

- Cable & door loops
- Detection
- External sounders
- Internal sounders & speakers
- Freewave - wirefree system
- Hydrosure - fall detection for swimming pools & ponds



**distributed by:**



# CQR | EMERGENCY SWITCHES & ACCESSORIES

Panic Buttons

Manual Call Points

Junction Boxes

[www.cqr.co.uk](http://www.cqr.co.uk)



INNOVATIVE SOLUTIONS

# CQR | EMERGENCY SWITCHES & ACCESSORIES



CQR is one of the major manufacturers of security products in the UK, and as a leading supplier to the European security industry, has consistently been at the forefront of traditional and new product development since opening for business way back in the early eighties.

The CQR brand is recognised worldwide and has become synonymous with quality and reliability. CQR branded products are all designed with ease of installation and use in mind and meet many product standards worldwide, including also full compliance to ISO 9001:2000.



Now part of the OSL Group, CQR continues to bring new products to market, backed up by a sales and support service, we believe is second to none.

This Technical Data Sheet reflects our 'modern' approach to our industry and provides you with all the information you need on this section of our extensive range.

*All CQR's Emergency Switches are designed for Consistency, Quality and Reliability. Their proven track record over many years means they can be fitted as part of any installation with confidence, ensuring that top quality, reliable products are consistent throughout the system.*

*The useful 'at a glance' tables on the back of this leaflet gives you all the performance data you need to choose the right products for the job.*

*All of CQR's Emergency Switches are available from a wide range of specialist security Distributors who, together with our own technical back up, provide an excellent after-sales service as and when required.*

*However, should you require further information on any product in this leaflet, please give our Technical Support Team a call on +44(0)151 606 6311.*



## SINGLE PUSH PERSONAL ATTACK BUTTON



A range of single push buttons in plastic, stainless steel or brass with silent operation.

**OPTIONS:**

WHITE	PASP1
BRASS	PASP1/BS
STAINLESS STEEL	PASP1/SS
STAINLESS STEEL WITH BELL/SIREN	PA614/SS
DIRECT DRIVE	
SPARE METAL KEY	KEYPAM
SPARE PLASTIC KEY	MOUKEY/BK

## DOUBLE PUSH PERSONAL ATTACK BUTTON



The double push range, in plastic and stainless steel, includes an electronic flush fitting unit with LED indication.

**OPTIONS:**

WHITE	PADP2/WH
STAINLESS STEEL WITH TAMPER	PADP2/SS
ELECTRONIC SELF LATCHING PAB	EPA/STD
SPARE METAL KEY	KEYPAM
SPARE PLASTIC KEY	MOUKEY/BK

## SINGLE PUSH PA PLUS RANGE



A range of single push plastic and stainless steel personal attack buttons, also available with the addition of a LED which illuminates the button area enabling easy identification in the dark.

**OPTIONS:**

WHITE PLASTIC	PAPLUSSP/WH
WHITE PLASTIC WITH LED	PAPLUSSP/WH/LED
STAINLESS STEEL	PAPLUSSP/SS
STAINLESS STEEL WITH LED	PAPLUSSP/SS/LED

## DOUBLE PUSH PA PLUS RANGE



The double push PAPLUS range, also in plastic and stainless steel, and with the same LED option as single push versions.

**OPTIONS:**

WHITE PLASTIC	PAPLUSDP/WH
WHITE PLASTIC WITH LED	PAPLUSDP/WH/LED
STAINLESS STEEL WITH TAMPER	PAPLUSDP/SS
STAINLESS STEEL WITH TAMPER AND LED	PAPLUSDP/SS/LED

## FP2 RESETTABLE CALL POINTS



Fully key resettable red manual fire call point which offers almost all commonly used switch monitoring configurations in the one device. Available in white, yellow and green for use in other applications such as Emergency Door Release.

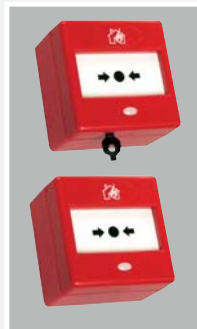
**AVAILABLE COLOURS:**



**OPTIONS:**

DOUBLE POLE VERSION  
PROTECTIVE LIFT UP COVER

## FP3 MANUAL CALL POINT



A unique manual call point, with high visibility LED, and which includes both frangible and resettable windows. It also offers user-friendly selection of the usual monitoring resistors. Complies with EN54-11

**PRODUCT CODE:**

FP3/RD

**AVAILABLE COLOURS:**



**OPTIONS:**

PROTECTIVE LIFT UP COVER

## JUNCTION BOXES



A range of junction boxes manufactured in high impact polystyrene and fitted with anti tamper device.

**OPTIONS:**

RECTANGULAR, 5 TERMINAL & 2 TAMPERS	JB720
SQUARE, 8 TERMINAL & 2 TAMPERS	JB730
24 TERMINAL & 2 TAMPERS	JB730

**AVAILABLE COLOURS:**

WHITE, BROWN	JB701/JB720
WHITE	JB730

## EMPTY BOXES



A range of white empty polystyrene plastic boxes suitable for both security and non-security applications.

**OPTIONS:**

65x65x18MM	EB820
65x65x23MM	EB821
50x37x25MM	EB823
75x50x25MM	EB824
100x75x37MM	EB825
130x103x55MM	EB830





### SINGLE PUSH PERSONAL ATTACK BUTTON

W: 180mm H: 306mm D: 58mm



### DOUBLE PUSH PERSONAL ATTACK BUTTON

W: 180mm H: 306mm D: 58mm



### PA PLUS SINGLE PUSH PERSONAL ATTACK BUTTON

W: 180mm H: 306mm D: 58mm



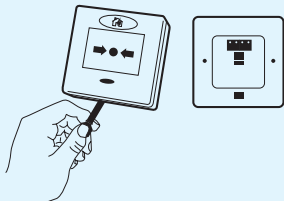
### PA PLUS DOUBLE PUSH PERSONAL ATTACK BUTTON

W: 180mm H: 306mm D: 58mm



### FP2 RESETTABLE CALL POINTS

W: 87mm H: 87mm D: 55mm



### FP3 MANUAL CALL POINT

W: 180mm H: 306mm D: 55mm



CQR Security

125 Pasture Road, Moreton, Wirral


United Kingdom, CH46 4TH

Tel: +44(0)151 606 1000

Fax: +44(0)151 606 1122

Email: info@cqr.co.uk

www.cqr.co.uk

A member of 

## PERSONAL ATTACK POINTS AT A GLANCE

	Operation	Material	Switch	Configuration (open/closed)	terminals	Tamper	Reset	Indicator	Backlit	max Voltage	Max Current
PASP1	Single	polystyrene	Reed	Selectable	5		Latch	Yes		50vdc	500mA
PASP1/BS	Single	ABS	Reed	Selectable	5		Latch	Yes		50vdc	500mA
PASP1/SS	Single	ABS	Reed	Selectable	5		Latch	Yes		50vdc	500mA
PA614/SS	Single	ABS	Reed/Contact	Selectable	5		Latch	Yes		50vdc	500mA
PADP2/WH	Double	ABS	Reed	Selectable	5		Latch	Yes		50vdc	500mA
PADP2/SS	Double	ABS	Reed	Selectable	5	Yes	Latch	Yes		50vdc	500mA
EPA/STD	Double	ABS	Reed	Selectable	7	Yes	Latch	Yes		50vdc	500mA
PAPLUSSP/WH	Single	ABS	Reed	Selectable	5		Latch	Yes		50vdc	500mA
PAPLUSSP/WH/LED	Single	ABS	Reed	Selectable	5		Latch	Yes	Yes	50vdc	500mA
PAPLUSSP/SS	Single	ABS	Reed	Selectable	5		Latch	Yes		50vdc	500mA
PAPLUSSP/SS/LED	Single	ABS	Reed	Selectable	5		Latch	Yes	Yes	50vdc	500mA
PAPLUSDP/WH	Double	ABS	Reed	Selectable	5		Latch	Yes		50vdc	500mA
PAPLUSDP/WH/LED	Double	ABS	Reed	Selectable	5		Latch	Yes	Yes	50vdc	500mA
PAPLUSDP/SS	Double	ABS	Reed	Selectable	5	Yes	Latch	Yes		50vdc	500mA
PAPLUSDP/SS/LED	Double	ABS	Reed	Selectable	5	Yes	Latch	Yes	Yes	50vdc	500mA

## CALL POINTS AT A GLANCE

	External dimensions (mm)	Surface mounted depth with backbox (mm)	Flush mounted depth without backbox (mm)	Monitoring resistors	Blocking diode	Microswitch rating	Activation indicator	Material	Complies with
FP2	87x87	55	20	470, 680 ohm	IN4001	5A 30 vdc	Fluorescent yellow indicator in window optional LED	Housing ABS, window polycarbonate	IP-44
FP3	85x85	55	20	470, 680 ohm	IN4001	12A 50V	Window displacement, fluorescent yellow indicator in window, high visibility 180° LED	Housing ABS, window glass or polycarbonate	EN54-11

### DATA SHEETS ALSO AVAILABLE:

Cable & door loops

Detection

External sounders

Internal sounders & speakers

Freewave - wirefree system

Hydrosure - fall detection for swimming pools & ponds



distributed by:

# CQR | EMERGENCY SWITCHES & ACCESSORIES

Panic Buttons

Manual Call Points

Junction Boxes

[www.cqr.co.uk](http://www.cqr.co.uk)



INNOVATIVE SOLUTIONS

# CQR | EMERGENCY SWITCHES & ACCESSORIES



CQR is one of the major manufacturers of security products in the UK, and as a leading supplier to the European security industry, has consistently been at the forefront of traditional and new product development since opening for business way back in the early eighties.

The CQR brand is recognised worldwide and has become synonymous with quality and reliability. CQR branded products are all designed with ease of installation and use in mind and meet many product standards worldwide, including also full compliance to ISO 9001:2000.



Now part of the OSL Group, CQR continues to bring new products to market, backed up by a sales and support service, we believe is second to none.

This Technical Data Sheet reflects our 'modern' approach to our industry and provides you with all the information you need on this section of our extensive range.

*All CQR's Emergency Switches are designed for Consistency, Quality and Reliability. Their proven track record over many years means they can be fitted as part of any installation with confidence, ensuring that top quality, reliable products are consistent throughout the system.*

*The useful 'at a glance' tables on the back of this leaflet gives you all the performance data you need to choose the right products for the job.*

*All of CQR's Emergency Switches are available from a wide range of specialist security Distributors who, together with our own technical back up, provide an excellent after-sales service as and when required.*

*However, should you require further information on any product in this leaflet, please give our Technical Support Team a call on +44(0)151 606 6311.*



## SINGLE PUSH PERSONAL ATTACK BUTTON



A range of single push buttons in plastic, stainless steel or brass with silent operation.

**OPTIONS:**

WHITE	PASP1
BRASS	PASP1/BS
STAINLESS STEEL	PASP1/SS
STAINLESS STEEL WITH BELL/SIREN	PA614/SS
DIRECT DRIVE	
SPARE METAL KEY	KEYPAM
SPARE PLASTIC KEY	MOUKEY/BK

## DOUBLE PUSH PERSONAL ATTACK BUTTON



The double push range, in plastic and stainless steel, includes an electronic flush fitting unit with LED indication.

**OPTIONS:**

WHITE	PADP2/WH
STAINLESS STEEL WITH TAMPER	PADP2/SS
ELECTRONIC SELF LATCHING PAB	EPA/STD
SPARE METAL KEY	KEYPAM
SPARE PLASTIC KEY	MOUKEY/BK

## SINGLE PUSH PA PLUS RANGE



A range of single push plastic and stainless steel personal attack buttons, also available with the addition of a LED which illuminates the button area enabling easy identification in the dark.

**OPTIONS:**

WHITE PLASTIC	PAPLUSSP/WH
WHITE PLASTIC WITH LED	PAPLUSSP/WH/LED
STAINLESS STEEL	PAPLUSSP/SS
STAINLESS STEEL WITH LED	PAPLUSSP/SS/LED

## DOUBLE PUSH PA PLUS RANGE



The double push PAPLUS range, also in plastic and stainless steel, and with the same LED option as single push versions.

**OPTIONS:**

WHITE PLASTIC	PAPLUSDP/WH
WHITE PLASTIC WITH LED	PAPLUSDP/WH/LED
STAINLESS STEEL WITH TAMPER	PAPLUSDP/SS
STAINLESS STEEL WITH TAMPER AND LED	PAPLUSDP/SS/LED

## FP2 RESETTABLE CALL POINTS



Fully key resettable red manual fire call point which offers almost all commonly used switch monitoring configurations in the one device. Available in white, yellow and green for use in other applications such as Emergency Door Release.

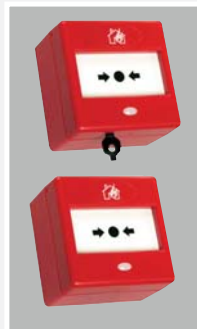
**AVAILABLE COLOURS:**



**OPTIONS:**

DOUBLE POLE VERSION  
PROTECTIVE LIFT UP COVER

## FP3 MANUAL CALL POINT



A unique manual call point, with high visibility LED, and which includes both frangible and resettable windows. It also offers user-friendly selection of the usual monitoring resistors. Complies with EN54-11

**PRODUCT CODE:**

FP3/RD

**AVAILABLE COLOURS:**



**OPTIONS:**

PROTECTIVE LIFT UP COVER

## JUNCTION BOXES



A range of junction boxes manufactured in high impact polystyrene and fitted with anti tamper device.

**OPTIONS:**

RECTANGULAR, 5 TERMINAL & 2 TAMPER	JB720
SQUARE, 8 TERMINAL & 2 TAMPER	JB730
24 TERMINAL & 2 TAMPER	JB730

**AVAILABLE COLOURS:**

WHITE, BROWN	JB701/JB720
WHITE	JB730

## EMPTY BOXES



A range of white empty polystyrene plastic boxes suitable for both security and non-security applications.

**OPTIONS:**

65x65x18MM	EB820
65x65x23MM	EB821
50x37x25MM	EB823
75x50x25MM	EB824
100x75x37MM	EB825
130x103x55MM	EB830



# CQR | CABLE & DOOR LOOPS

20 Years experience of alarm cable manufacturing in the United Kingdom

Wide range of cable types; standard, screened, low smoke & fume

User friendly, easy to strip & pliable in use

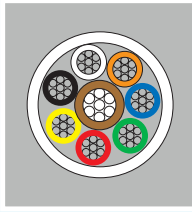
[www.cqr.co.uk](http://www.cqr.co.uk)



INNOVATIVE SOLUTIONS



## CABLE COMPOSITION



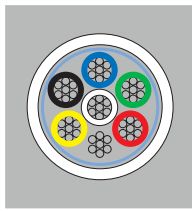
### STANDARD CABLE.

This cable is based on cores made from 7 strands of 0.2mm annealed tinned copper wire & is sheathed in Type 1 PVC. These cables are available in white or brown.

### LOW SMOKE & FUME CABLE.

The standard security cable can also be specified with a special low emission PVC outer sheathing. Using this sheathing, the compound oxygen index level is greater than 32%. This means it will require more than 32% of the volume of air to be oxygen for it to catch fire. 'Normal' air contains around 19% oxygen. The acid emission level is less than 10%. A normal PVC sheathing compound would give a figure of 20%.

**14 STRAND CABLE.** This is similar to the standard cable except that each core is made up of 14 strands of 0.2mm cable. This gives a Nominal conductor area of 0.44mm<sup>2</sup>. (This is often used in areas where 0.5mm<sup>2</sup> wire is required).



### SCREENED CABLE.

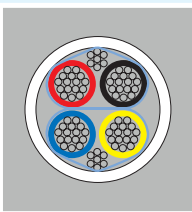
This uses the same cores as standard cable. In addition, an aluminium foil is wrapped around the cores. Screened cable offers significant advantages in situations where RF interference or spurious signals may lead

to false alarms or erosion of data. An earth drain wire is present along the entire length of the cable providing shield continuity and a convenient earthing point at the control panel.

### TWIN POWER & DATA.

Two different conductor types are used. A power pair (red/blue) is provided in 16 strands x 0.2mm (0.5mm<sup>2</sup>) for use where higher than normal current carrying capacity or lower voltage drop is required

The data cores consist of the standard 7 strands x 0.2mm tinned copper wire. The data cores are aluminium foil wrap screened (with an earth drain wire) to give added protection against induced transients that may be carried via the power cores or outside influences.



### TWISTED PAIR CABLE.

Each core consists of 24 strands of 0.2mm (0.75mm<sup>2</sup>) copper wire. Each pair of cores is twisted and aluminium foil wrap screened. A bare 7 strands x 0.2mm earth drain wire is included. Twisted pair cable is particularly useful for bus

systems or for installations requiring longer lengths of cabling such as access control and CCTV.



CQR Security

125 Pasture Road, Moreton, Wirral


United Kingdom, CH46 4TH

Tel: +44(0)151 606 1000

Fax: +44(0)151 606 1122

email: info@cqr.co.uk

www.cqr.co.uk

A member of 

## CABLE CONSTRUCTION



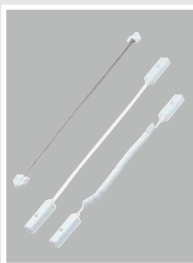
**CORES.** Cores are prepared using Type 1 PVC insulation to cover the tinned copper wire. In order to ensure a constant diameter, a laser is used which is accurate to 0.0001mm. The PVC insulation is tested by passing the core through a high voltage (5kV) curtain which eliminates all possibility of inadequate insulation.

**LAYING UP (BUNCHING).** This process puts a "slow twist" on the cores which gives them their own natural circumference. This combined with the sheathing process, produces round flexible cable.

**SHEATHING.** The bunched core is chalk dusted & a rip cord inserted for easier stripping of insulation. The bunched cores are then sheathed with Type 1 PVC. The quality of this material is critical to the flexibility of the finished cable.

## CABLE AT A GLANCE

	Standard cable, Screened cable, low smoke & fume	Twin power & data	Twisted pair
Core Type:	Annealed tin copper	Annealed tin copper	Copper
Strand Diameter	0.2mm	0.2mm	0.2mm
Strands per core	7	16 Power 7 Data	24
Nom. Conductor Area	0.22mm <sup>2</sup>	0.50mm <sup>2</sup> - power 0.22mm <sup>2</sup> - data	0.75mm <sup>2</sup>
Core Gauge	24 AWG	22 AWG	20 AWG
Insulation Thickness	0.3mm	0.4mm	0.3mm
Max. Operating Voltage	50v RMS	50v RMS	50v RMS
Current Rating: Per Core @ 70°C	1 AMP	3 AMP	4.5 AMP
Max. operating Temp	70°C	70°C	70°C
Nom Core Resistance @ 20°C	92 OHMS/KM	40 OHMS/KM	25 OHMS/KM
BS Standards	BS4737, section 3.30	BS4737, section 3.30	BS4737, section 3.30



## DOOR LOOPS

A range of door loops are available in 4 or 6 cores, in fixed or extendible lengths and come with junction boxes included. They are constructed from braided copper cores with crimped spade connectors for ease of connection.

### ORDER CODE:

Single door loops & junction boxes

500mm armoured flexi-tube C/W end caps (no cable)

300mm 4 way cable

300mm 6 way cable

DLT 103/WH

DLA 704/WH

DLA 706/WH

Extendible door loops including junction boxes

250mm extending to 1000mm 4 way cable

250mm extending to 1000mm 6 way cable

DLA 708/WH

DLA 709/WH

Standard cables in white (WH) other colours available to special order.



### DATA SHEETS ALSO AVAILABLE:

Internal sounders & speakers

Detection

External sounders

Emergency switches & accessories

Freewave - wirefree system

Hydrosure - fall detection for swimming pools & ponds

distributed by: