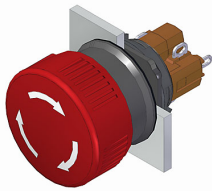


# EAO – Your Expert Partner for Human Machine Interfaces

## 51-156.0256 - Mushroom-head complete

### 51-156.0256 - Mushroom-head complete



*Attention: The preview is based on a sample product. This can differ from your current configuration.*

#### Mounting

Mounting cut-out  $\varnothing$  16 mm

#### Front

Front dimension  $\varnothing$  24.5 mm  
Front shape round

#### Other Attributes

Weight 0.011 kg

#### Operating-/Indication part

Lens material Plastic  
Lens colour blue  
Lens profile Mushroom  
Lens optics opaque

#### IP-Rating

Front protection IP65

#### Connection Method

Terminal Solder

#### Actuator

Switching action Momentary

#### Switching element

Switching system Snap-action switching element  
Contacts 1 NC + 1 NO  
Switching current 5 A  
Contact material Gold  
Switching voltage 250 V AC

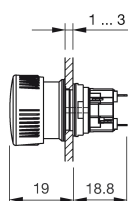
#### Function

Mushroom-head pushbutton

# EAO – Your Expert Partner for Human Machine Interfaces

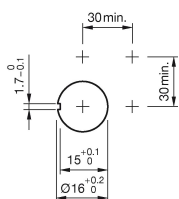
51-156.0256 - Mushroom-head complete

## Dimensions

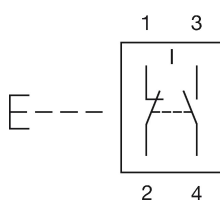


H = Universal terminal 2.0 x 0.5 mm

## Mounting cut-outs



## Wiring diagram



## Additional information

If the anti-twist ring is not used the panel thickness increases to 4 mm

## Legend

Contacts: NC = Normally closed, NO = Normally open  
Switching action: B = Momentary