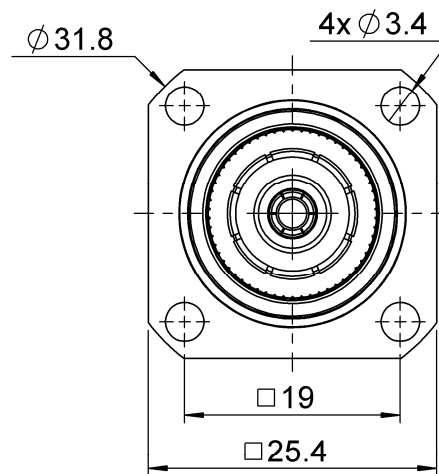
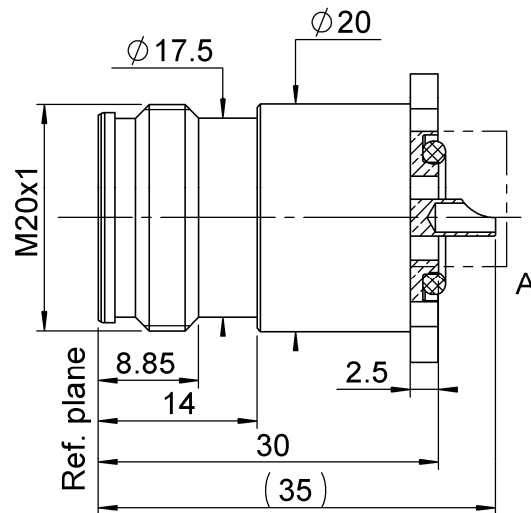


PAGE 1/2

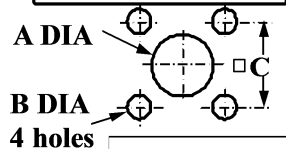
ISSUE 04-01-16A

SERIES 4.3-10

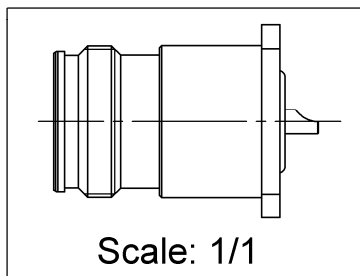
PART NUMBER R183405067



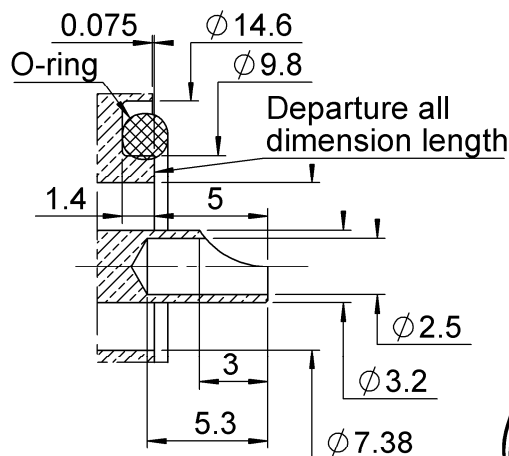
**PANEL CUT OUT**



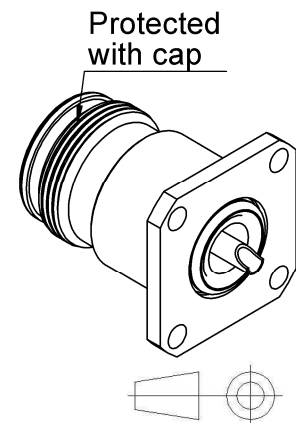
	mm	
	Maxi	mini
A	7.46	7.3
B	3.6	3.5
C	19.05	18.95



All dimensions are in mm.



DETAIL A  
SCALE 3 : 1



COMPONENTS	MATERIALS	PLATING (μm)
Body	BRASS.	BBR
Center contact	BRONZE, BRASS	SILVER
Outer contact	BRONZE	SILVER
Insulator	PTFE	
Gasket	SILICONE RUBBER	
Others parts		
-	-	-
-	-	-

PAGE 2/2

ISSUE **04-01-16A**

SERIES **4.3-10**

PART NUMBER **R183405067**

### PACKAGING

Standard	Unit	Other
<b>25</b>	<b>Contact us</b>	<b>Contact us</b>

### ELECTRICAL CHARACTERISTICS

Impedance		<b>50</b>	Ω
Frequency		<b>0-6</b>	GHz
VSWR	<b>1.02*</b>	<b>+</b>	<b>0.0100</b> x F(GHz) Maxi
Insertion loss		<b>0.05*</b>	√F(GHz) dB Maxi
RF leakage	- (	<b>**</b>	- F(GHz) dB Maxi
Voltage rating		<b>1000</b>	Veff Maxi
Dielectric withstanding voltage		<b>2500</b>	Veff mini
Insulation resistance		<b>5000</b>	MΩ mini

### MECHANICAL CHARACTERISTICS

Center contact retention			
Axial force – Mating End		<b>30</b>	N mini
Axial force – Opposite end		<b>30</b>	N mini
Torque		<b>5</b>	N.cm mini
Recommended torque			
Mating		<b>NA</b>	N.cm
Panel nut		<b>NA</b>	N.cm
Mating life		<b>100</b>	Cycles mini
Weight		<b>54.6700</b>	g

### ENVIRONMENTAL

Operating temperature	<b>-55/+90</b>	°C
Hermetic seal	<b>NA</b>	Atm.cm3/s
Panel leakage	<b>IP67</b>	

### SPECIFICATION

### OTHER CHARACTERISTICS

Assembly instruction:**NA**

Others:

**\*Coaxial Transmission Line Only.**

**\*\* RF leakage typical >=110dB @DC-3GHz**

**PIM3<-123 dBm @ 2x20W**