

23 SERIES

- **MINIATURE WEDGE BASE NON-GROUNDED OR GROUNDED LAMPHOLDERS**
- **BLACK NYLON HOUSING (UNLESS OTHERWISE NOTED)**
- **6" WIRE LEADS, PRINTED CIRCUIT BOARD OR SOLDER LUG TERMINALS**
- **MAXIMUM RATINGS: 20 WATTS, 28 VOLTS**
- **UL AND CSA RECOGNIZED • UL FILE E20356 • CSA FILE LR 15284-24**

Overview

The 23 Series lampholders are designed for automotive and appliance applications. Most lampholders can be supplied as either non-grounded or grounded units with printed circuit board or solder lug terminals or 6" wire leads. Many bracket and mounting options are available including plug buttons for 5/8" mounting holes and a 5/8" twist and lock socket. Lampholders are designed for use in low voltage applications with T-5 & T-3 1/4 wedge base lamps.

Specifications

Housing: black nylon, unless otherwise specified. white housing also available.

Contacts: brass.

Terminals:

Solder lug: electro tinned brass, 0.110" length x 0.010" thick, with one wire hole 3/32"x1/16" in diameter. Non-grounded units are supplied with two terminals. Grounded units are supplied with one terminal.

Printed circuit board terminals: brass.

Wire Leads: 6" Leads: #22 AWG, black, stranded tinned copper, PVC insulated, UL/CSA rated 105°C, stripped 1/2". Non-grounded units are supplied with two 6" wire leads. Grounded units are supplied with one 6" wire lead. Custom wire lengths, stripping, termination and wire types are also available.

Mounting:

Brackets: 0.025" to 0.032" zinc plated steel.

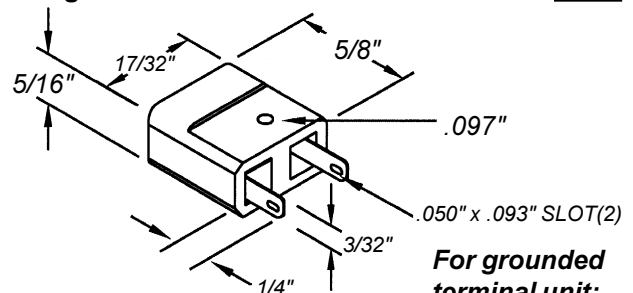
Plug buttons: for 5/8" mounting hole, nylon or zinc plated steel.

Twist & Lock: for 5/8" mounting hole.

Maximum rating: 20 Watts, 28 Volts.

Non-grounded unit

23-07

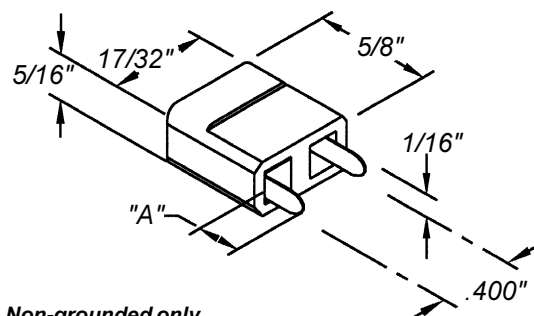


For wire leads:

Non-grounded unit: **23-207**. Grounded unit: **23-207-1**.

For printed circuit board applications.

23-35



Non-grounded only.

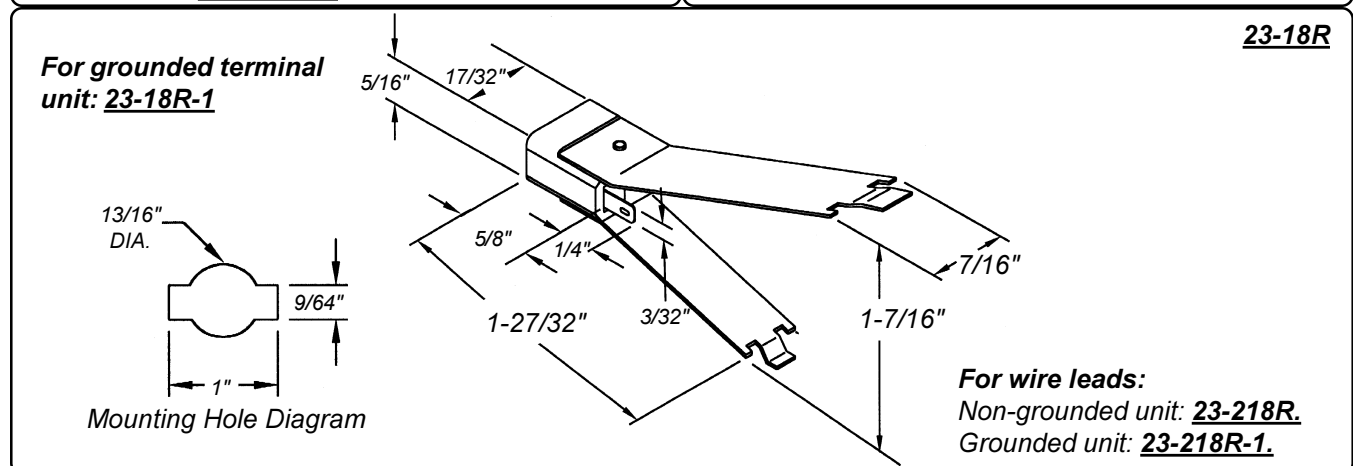
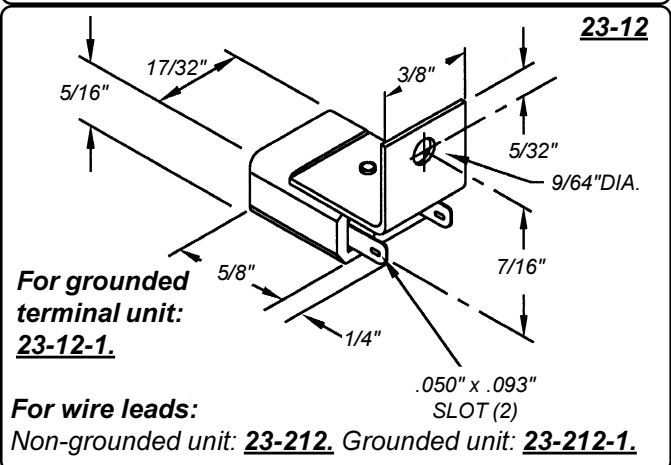
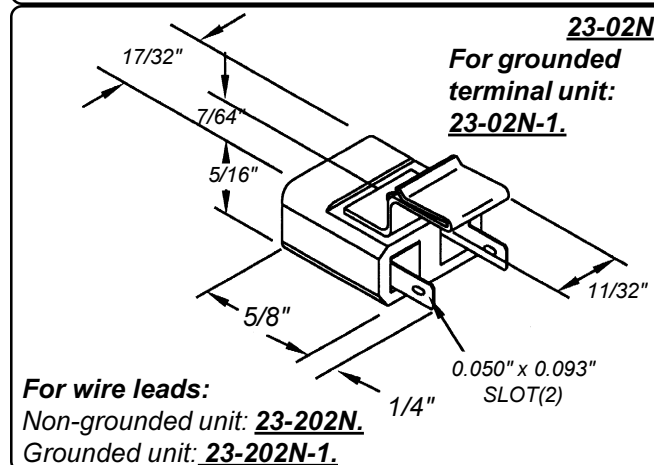
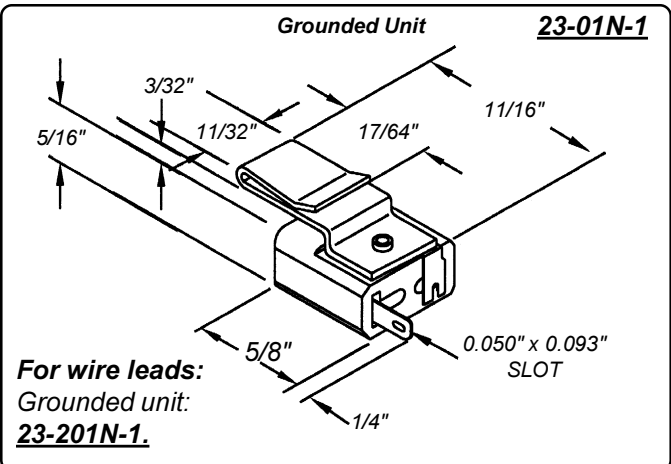
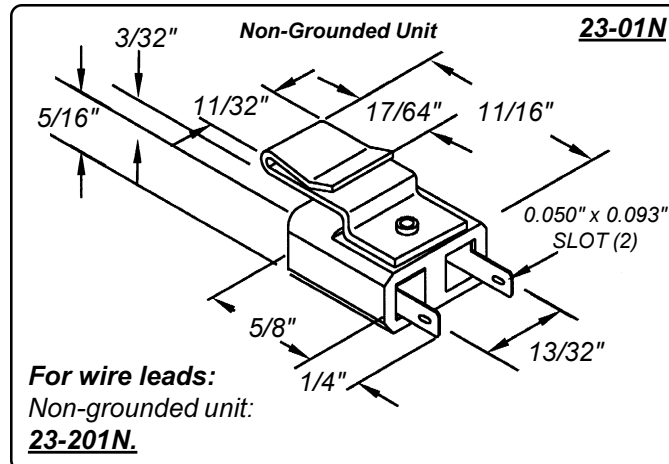
Part Number	Dimension "A"	Brass Terminals
23-35	0.250"	Electro-tinned
23-35XP17	0.150"	Plain Brass
23-35XP18	0.090"	Plain Brass
23-35XP19	0.150"	Electro-tinned
23-35XP20	0.100"	Electro-tinned

Standard version will be supplied without a mounting hole. 0.097" diameter hole in housing is an option.

23 Series • UL & CSA Recognized
Maximum Rating: 20 Watts, 28 Volts
Non-Grounded or Grounded

Black Nylon* Housing
Solder Lug Terminals, 6" Wire Leads
or Printed Circuit Board Terminals

* Nylon Housing unless otherwise noted.



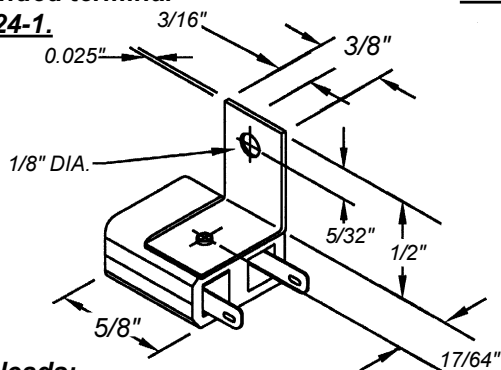
23 Series • UL & CSA Recognized
Maximum Rating: 20 Watts, 28 Volts
Non-Grounded or Grounded

Black Nylon* Housing
Solder Lug Terminals, 6" Wire Leads
or Printed Circuit Board Terminals

* Nylon Housing unless otherwise noted.

**For grounded terminal
unit: 23-24-1.**

23-24

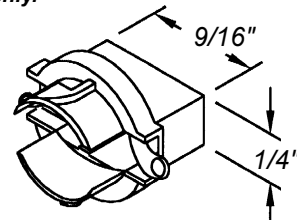


For wire leads:

Non-grounded unit: 23-224. Grounded unit: 23-224-1.

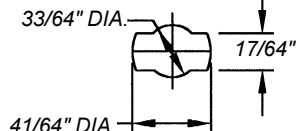
Non-grounded only.

23-33TLPC



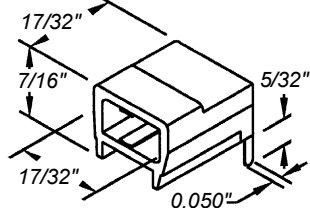
Designed for
rear mounting
on a printed
circuit board.

Mounting Hole Diagram



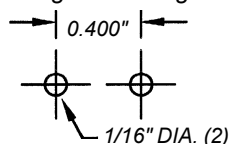
Non-grounded only.

23-35H



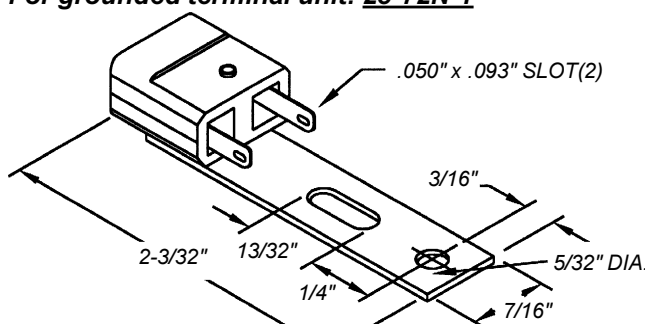
Designed for
mounting on
a printed
circuit board.

Mounting Hole Diagram



For grounded terminal unit: 23-72N-1

23-72N



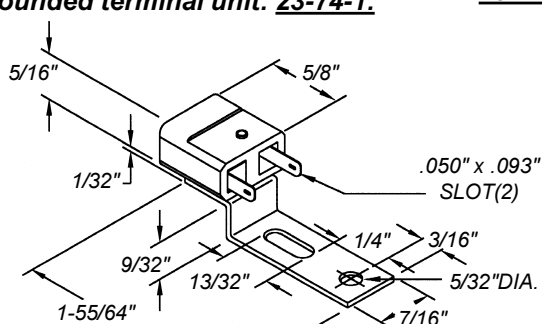
For wire leads:

Non-grounded unit: 23-272N.

Grounded unit: 23-272N-1.

For grounded terminal unit: 23-74-1.

23-74

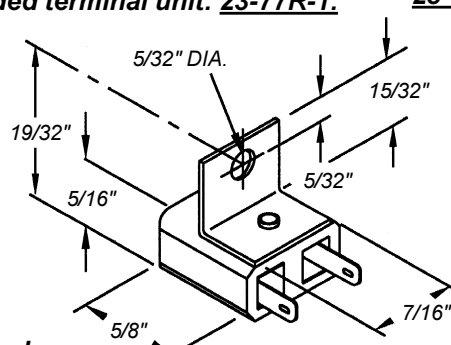


For wire leads:

Non-grounded unit: 23-274. Grounded unit: 23-274-1.

For grounded terminal unit: 23-77R-1.

23-77R



For wire leads:

Non-grounded unit: 23-277R.

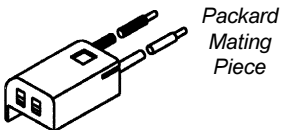
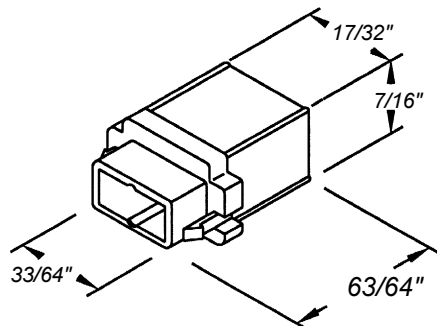
Grounded unit: 23-277R-1.

23 Series • UL & CSA Recognized
Maximum Rating: 20 Watts, 28 Volts
Non-Grounded or Grounded

Black Nylon* Housing
Solder Lug Terminals, 6" Wire Leads
or Printed Circuit Board Terminals

* Nylon Housing unless otherwise noted.

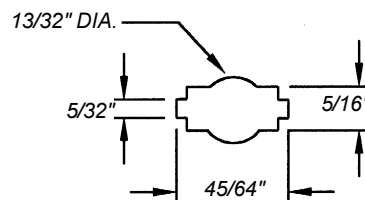
Non-grounded only.



Note:
Packard
Mating Piece
Not Supplied

Packard Mating
Part Numbers:
Housing 1205-9253
Terminals 1204-7883

23-METRI-PACK

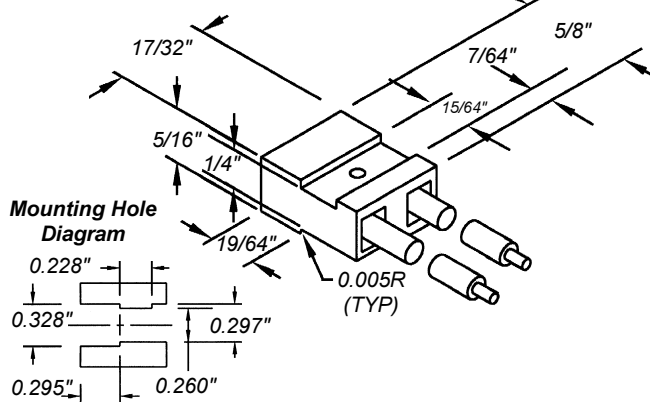


**23-METRI-PACK
MOUNTING HOLE**

Recommended panel thickness
range: 0.068" to 0.075".

Non-grounded only.

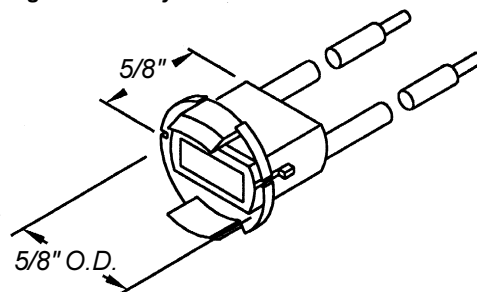
23-207SL



Mounting Hole
Diagram

Non-grounded only.

23-140PL

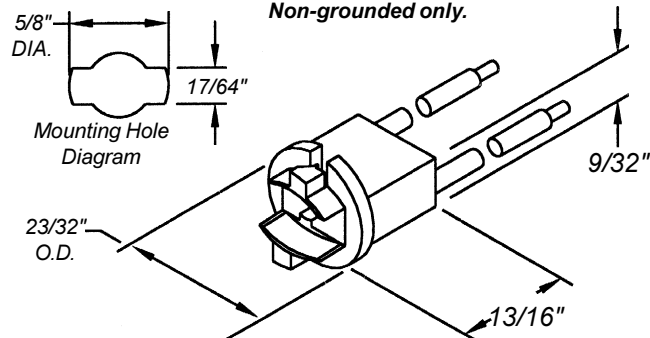


Plug button for 5/8" mounting hole
Panel thickness: 1/32" to 3/32".

For solder lug terminals: **23-140PL-T.**

TWIST & LOCK MOUNTING 23-233TL

Non-grounded only.



Mounting Hole
Diagram

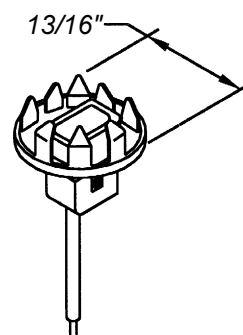
For solder lug terminals:
23-33TL.

Panel thickness
range: 1/32" to 3/64"

23-240-1

For non-grounded
wire lead unit: **23-240.**

For solder lug terminals:
Non-grounded unit: **23-40.**
Grounded unit: **23-40-1.**



Plug button: zinc plated steel
Mounting hole: 5/8" Panel thickness: 1/16" to 3/32"

23 Series • UL & CSA Recognized
Maximum Rating: 20 Watts, 28 Volts
Non-Grounded or Grounded

Black Nylon* Housing
Solder Lug Terminals, 6" Wire Leads
or Printed Circuit Board Terminals

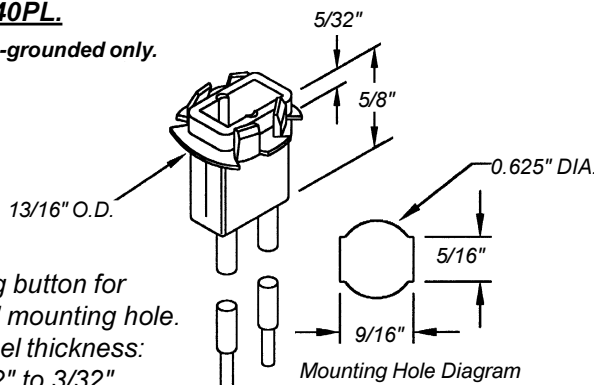
* Nylon Housing unless otherwise noted.

For solder lug terminals:

23-40PL

23-240PL

Non-grounded only.

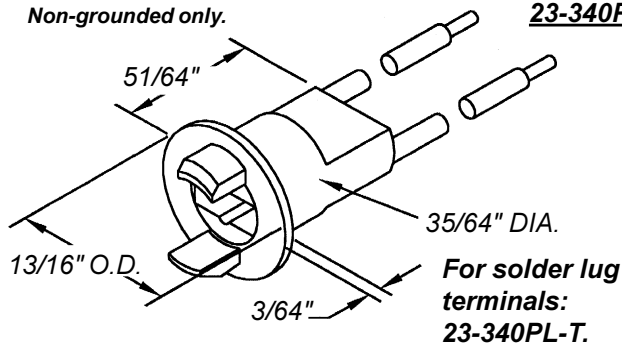


Plug button for
5/8" mounting hole.
Panel thickness:
1/32" to 3/32"

Mounting Hole Diagram

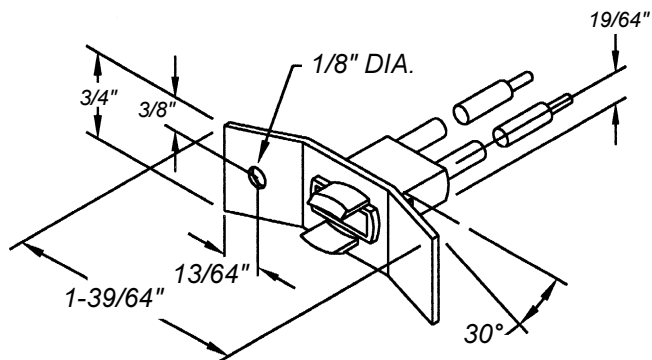
Non-grounded only.

23-340PL

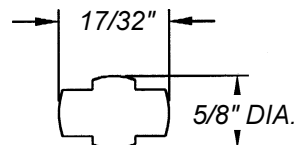


**For solder lug
terminals:
23-340PL-T**

Housing material: Ultem[®]
Plug button for 5/8" mounting hole.
Panel thickness range: 1/32" to 5/64"



Designed for snap-in mounting with a mechanical
locking feature for greater panel assurance.



Mounting Hole Diagram

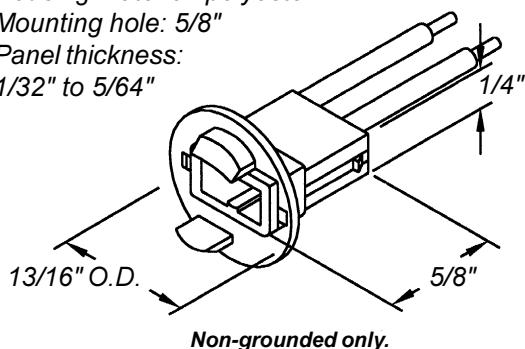
For solder lug terminals: 23-440PL-T

Non-grounded only.

Panel Thickness: 1/32" to 3/32"

Housing material: polyester
Mounting hole: 5/8"
Panel thickness:
1/32" to 5/64"

23-540PL



Non-grounded only.

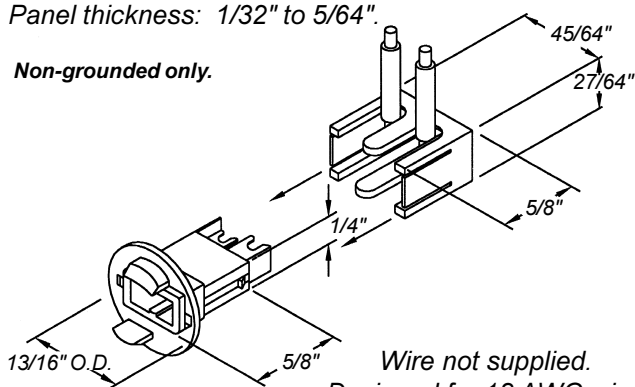
For solder lug terminals: 23-540PL-T

Mounting hole: 5/8"

Panel thickness: 1/32" to 5/64"

23-540PLC

Non-grounded only.



Wire not supplied.
Designed for 18 AWG wire.

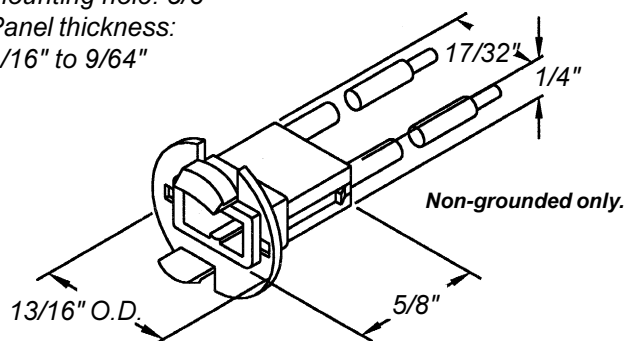
23 Series • UL & CSA Recognized
Maximum Rating: 20 Watts, 28 Volts
Non-Grounded or Grounded

Black Nylon* Housing
Solder Lug Terminals, 6" Wire Leads
or Printed Circuit Board Terminals

* Nylon Housing unless otherwise noted.

Housing material: polyester
Mounting hole: 5/8"
Panel thickness:
1/16" to 9/64"

23-640PL

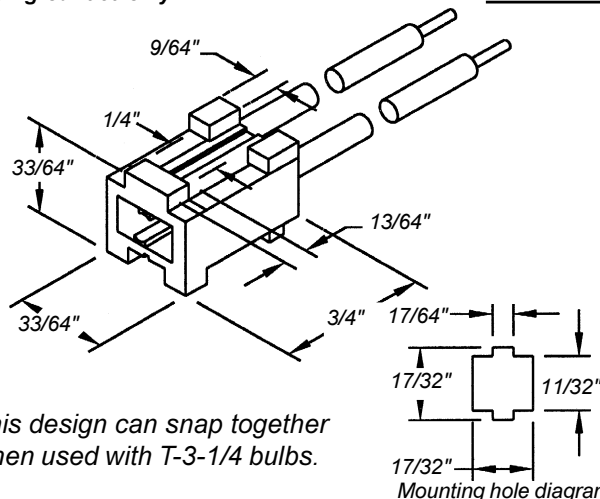


Designed for
firm, snap fit into
thicker panels.

For solder lug terminals:
23-640PL-T.

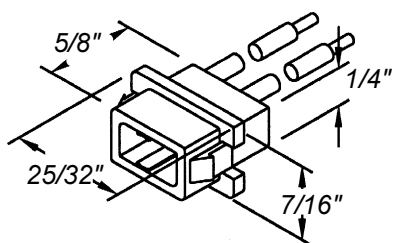
Non-grounded only.

23-740SL

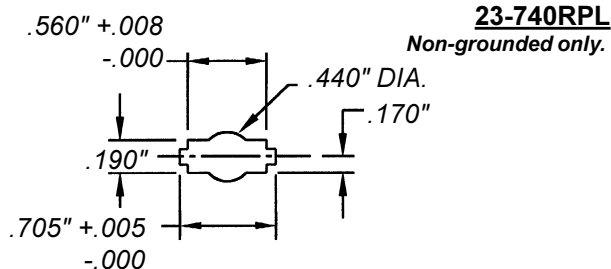


This design can snap together
when used with T-3-1/4 bulbs.

Mounting hole diagram

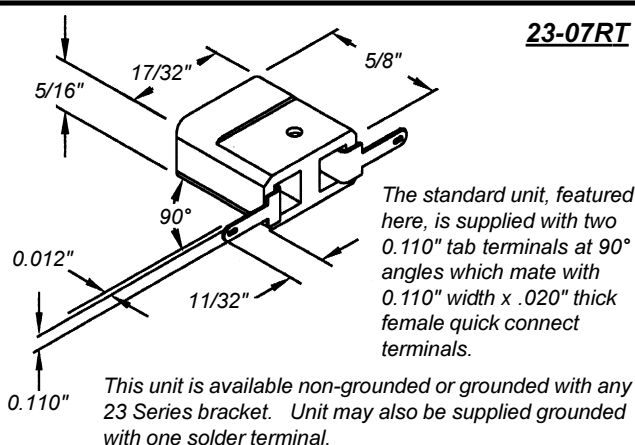


For solder lug terminals: 23-740RPL-T.



Mounting hole diagram

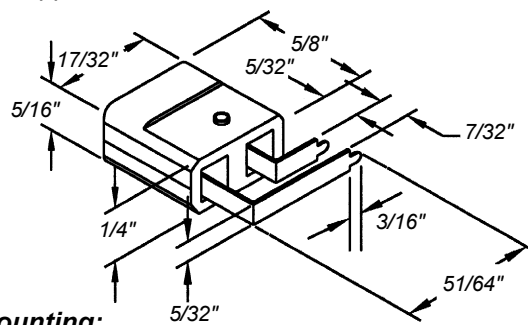
Recommended panel thickness range: .080"



This unit is available non-grounded or grounded with any 23 Series bracket. Unit may also be supplied grounded with one solder terminal.

Designed for right angle circuit
board applications:

23-35RA
Non-grounded only.



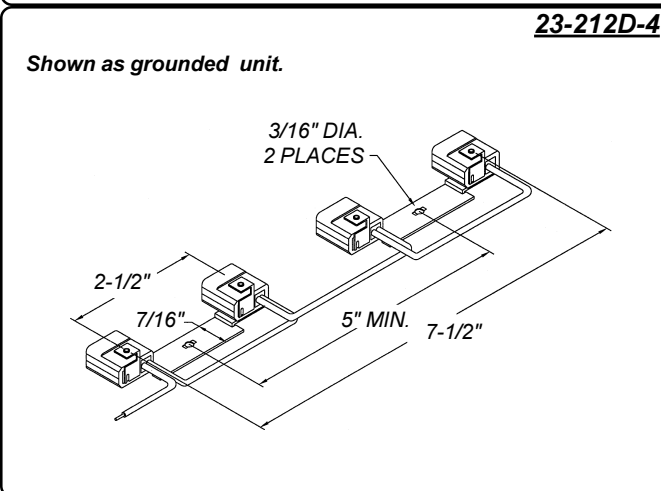
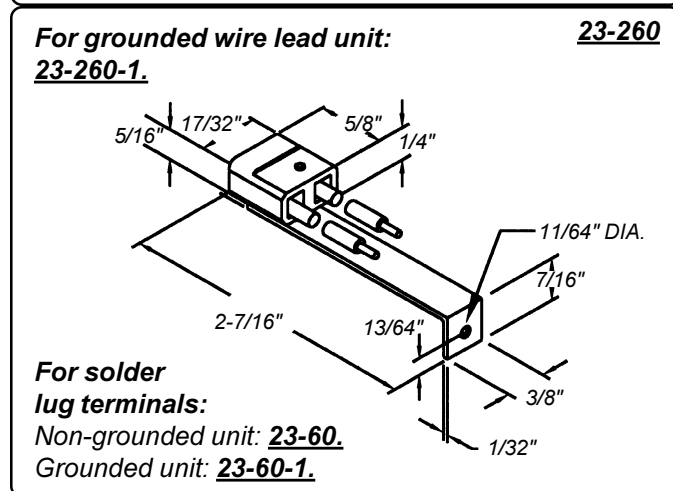
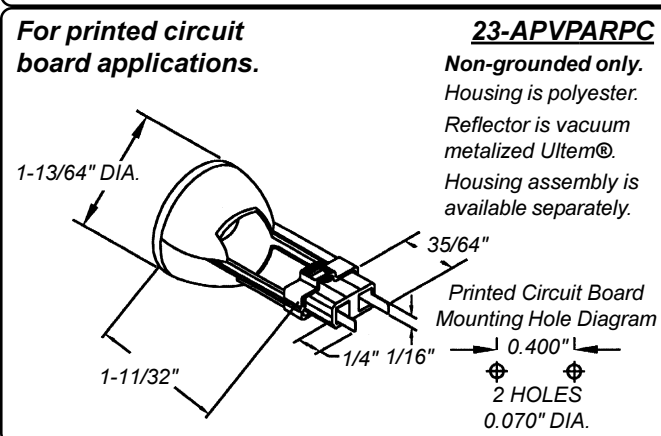
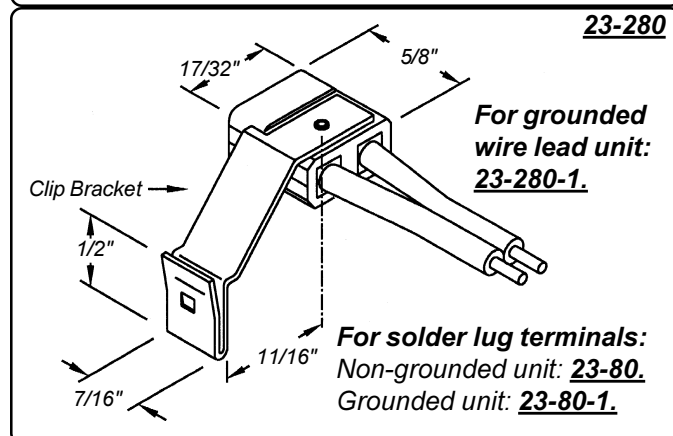
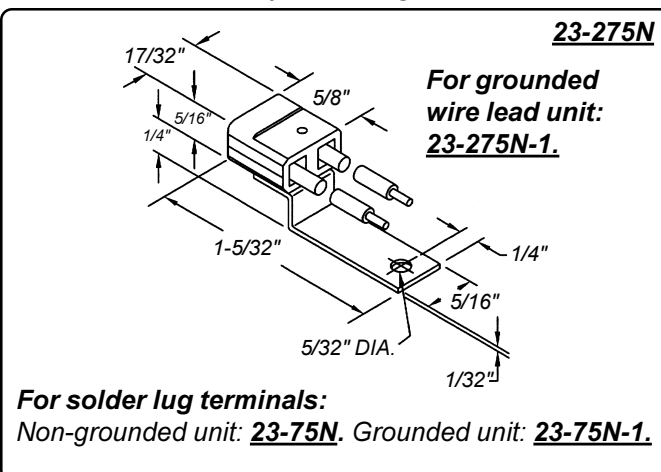
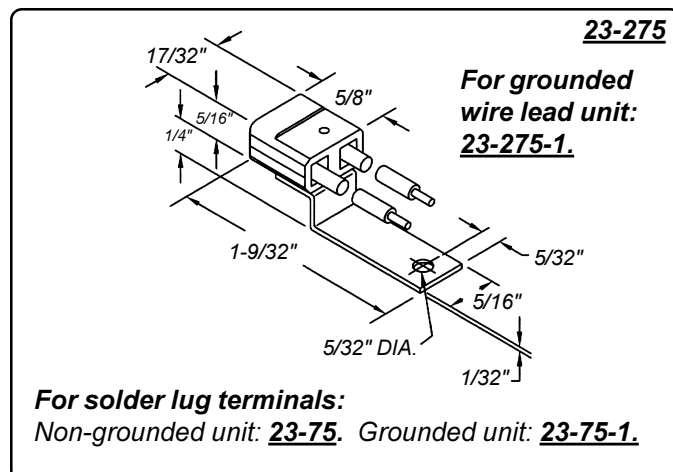
Mounting:

3/32" diameter mounting holes with 7/32" spacing.

23 Series • UL & CSA Recognized
Maximum Rating: 20 Watts, 28 Volts
Non-Grounded or Grounded

Black Nylon* Housing
Solder Lug Terminals, 6" Wire Leads
or Printed Circuit Board Terminals

* Nylon Housing unless otherwise noted.





T-3-1/4 & T-5 MINIATURE WEDGE BASE



23 Series • UL & CSA Recognized
Maximum Rating: 20 Watts, 28 Volts
Non-Grounded or Grounded

Black Nylon* Housing
Solder Lug Terminals, 6" Wire Leads
or Printed Circuit Board Terminals

* Nylon Housing unless otherwise noted.

*Plastic lens & reflector
 can be supplied with a
 T-5 lamp already
 inside or without lamp.*

PLR36-1700W is
 supplied without a
 lamp.

Contact customer
 service with your lamp
 requirements.

4-7/16" O.D.

PLR36-1700W
 Non-grounded only.

*Snap-Action Lens and
 Snap-In Socket design
 facilitate lamp installation.*

*Reflector is vacuum
 metalized high impact
 Styrene®.*

