

- R04 series connectors are built compact and the tight waterproofing mechanism allows the model to be at a depth 20 meters under water. This model is ideal for application where units are exposed to extreme weather or high humidity either inside or outside.

Also available for hermetically sealed receptacle.

R28 series based on R04 series feature high density and miniaturization.

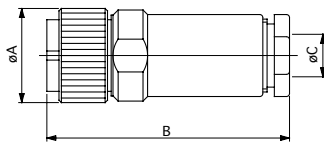
Specifications

Series	R04	R28
Connections	Screw on	
Termination	Solder	
Temperature and Humidity	-25°C to +85°C 85% max.	
Number of Pins	2, 3, 5, 6, 8, 12	8, 12
Shell Material / Finish	Brass and Zinc Alloy / Nickel Plating	
Contact Material / Finish	Copper Alloy / Gold Plating	
Insulation Material	PBT Resin (UL 94 V-0)	
Water Proof (connected state)	196kPa (2kgf/cm ²)	
Hermetic Seal (Hermetically sealed recep. only)	Helium leak rate 1 ATM. 1x10 ⁻⁹ cc/sec max.	-----

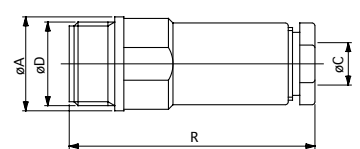
* See next page as for Electrical Specifications.



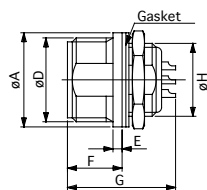
Plug
R04-P8M



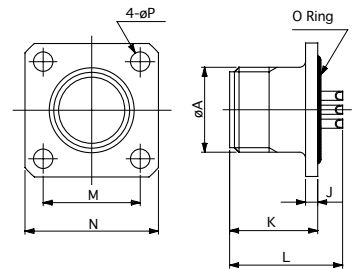
Jack
R04-J8F6.3



Bulkhead Mount Receptacle
R04-R8F



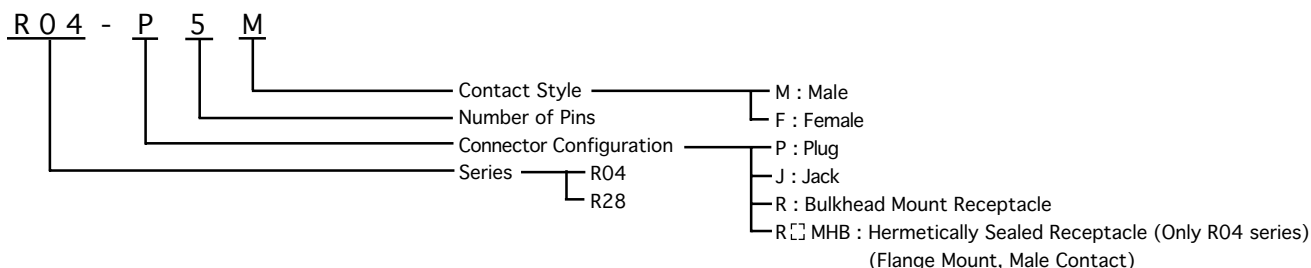
Hermetically Sealed Receptacle
R04-R2MHB
(Only R04series)



Configuration

Series	Insert size	No. of Pins	Dimensions (mm)														
			A	B	C	D	E	F	G	H	J	K	L	M	N	P	R
R04	6	2, 3, 5	12.0	38.0	4.8	10.5 P=0.75	1.5	9.0	17.8	9.0 P=0.5	2.0	14.5	18.6	14.0	20.0	3.2	38.0
	9	6, 8	15.5	40.0	6.3, 6.8, 7.3	M14 P=1	1.5	9.0	17.8	12.0 P=0.8	2.0	14.5	18.6	16.0	22.0	3.2	40.5
	12	12	20.0	43.3	6.3, 8.5	M18 P=1	1.5	9.0	17.8	M16 P=1	3.0	14.5	18.6	20.0	26.0	3.2	41.8
R28	6	8	12.0	38.0	4.8	10.5 P=0.75	1.5	9.0	17.8	9.0 P=0.5	---	---	---	---	---	---	---
	9	12	15.5	40.0	6.3, 6.8, 7.3	M14 P=1	1.5	9.0	17.8	12.0 P=0.8	---	---	---	---	---	---	---

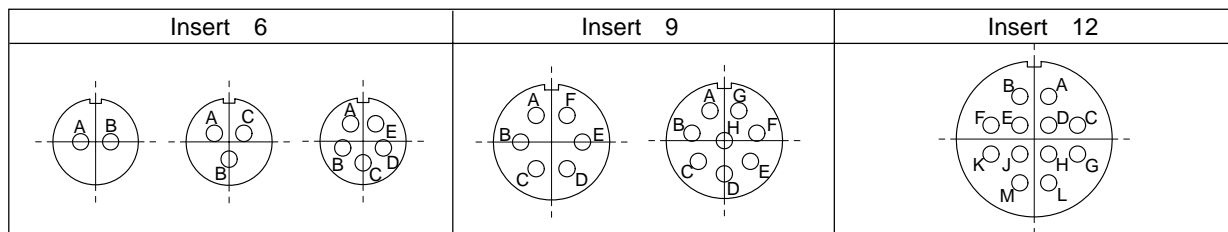
Part Numbering System



Electrical Specifications

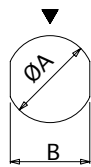
Series	R04						R28	
	6			9			6	9
Insert Size	6			9			6	9
Number of Contacts	2	3	5	6	8	12	8	12
Withstanding Voltage (Vrms)	900	900	500	900	700	900	300	300
Voltage Rating (Vrms)	300	300	150	300	200	300	100	100
Current Rating (A)	2							
Applicable Wire Size	AWG#24 (0.2mm ² max.)						AWG#26 (0.1mm ² max.)	
Contact Resistance	8mΩ max.						25mΩ max.	
Insulation Resistance	DC500V 1000MΩ min.						DC100V 1000MΩ min.	

Insert Arrangement



* Drawings above are ones viewed from the rear side of pin insulators. (pin contacts)

Mounting Hole Dimensions

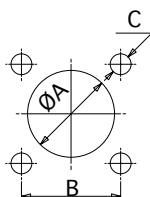


Style 1

Bulkhead Mount Receptacle

Insert Size	Style	φA	B
6	1	9.2	8.4
9		12.2	11.2
12		16.2	14.7

* R28 is not available in insert size 12.



Style 2

Hermetically Sealed Receptacle (Flange Mount, Only R04 series)

Insert Size	Style	φA	B	C
6	2	9.6	14.0	M3
9		12.4	16.0	M3
12		16.8	20.0	M3