

## Base strip - MCV 1,5/ 2-G-3,81 - 1803426

Please be informed that the data shown in this PDF Document is generated from our Online Catalog. Please find the complete data in the user's documentation. Our General Terms of Use for Downloads are valid (<http://phoenixcontact.com/download>)

Header, Nominal current: 8 A, Rated voltage (III/2): 160 V, Number of positions: 2, Pitch: 3.81 mm, Color: green, Contact surface: Tin, Mounting: Wave soldering




The figure shows a 10-position version of the product

### Why buy this product

- Well-known mounting principle allows worldwide use
- Vertical connection enables multi-row arrangement on the PCB
- Maximum flexibility when it comes to device design – one header for connectors with different connection technologies



### Key Commercial Data

|                                      |   |
|--------------------------------------|---|
| Packing unit                         | 250 STK   |
| Minimum order quantity               | 250 STK   |
| GTIN                                 | <br>4 017918 045739 |
| GTIN                                 | 4017918045739   |
| Weight per Piece (excluding packing) | 0.650 g   |
| Custom tariff number                 | 85366990  |
| Country of origin                    | Germany   |

### Technical data

#### Dimensions

|                          |              |
|--------------------------|--------------|
| Length                   | 7.25 mm      |
| Pitch                    | 3.81 mm      |
| Dimension a              | 3.81 mm      |
| Width                    | 9.01 mm      |
| Constructional height    | 9.2 mm       |
| Height                   | 12.6 mm      |
| Length of the solder pin | 3.4 mm       |
| Pin dimensions           | 0,8 x 0,8 mm |

# Base strip - MCV 1,5/ 2-G-3,81 - 1803426

## Technical data

### Dimensions

|               |        |
|---------------|--------|
| Hole diameter | 1.2 mm |
|---------------|--------|

### General

|  |               |
|--|---------------|
| Range of articles                      | MCV 1,5/...-G |
| Insulating material group              | IIIa          |
| Rated surge voltage (III/3)            | 2.5 kV        |
| Rated surge voltage (III/2)            | 2.5 kV        |
| Rated surge voltage (II/2)             | 2.5 kV        |
| Rated voltage (III/3)                  | 160 V         |
| Rated voltage (III/2)                  | 160 V         |
| Rated voltage (II/2)                   | 250 V         |
| Connection in acc. with standard       | EN-VDE        |
| Nominal current $I_N$                  | 8 A           |
| Maximum load current                   | 8 A           |
| Insulating material                    | PBT           |
| Flammability rating according to UL 94 | V0            |
| Color                                  | green         |
| Number of positions                    | 2             |

### Standards and Regulations

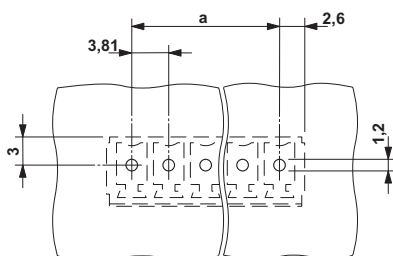
|  |        |
|--|--------|
| Connection in acc. with standard       | EN-VDE |
|  | CSA    |
| Flammability rating according to UL 94 | V0     |

### Environmental Product Compliance

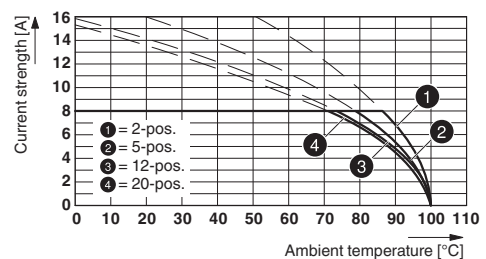
|            |   |
|------------|---|
| China RoHS | Environmentally friendly use period: unlimited = EFUP-e |
|            | No hazardous substances above threshold values          |

## Drawings

Drilling diagram



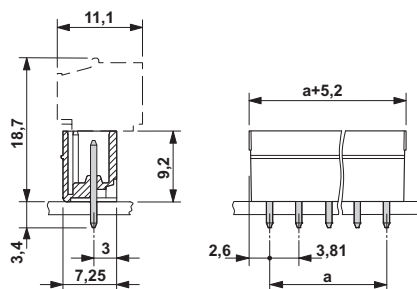
Diagram



Type: FRONT-MC 1,5/...-ST-3,81 with MCV 1,5/...-G-3,81

## Base strip - MCV 1,5/ 2-G-3,81 - 1803426

Dimensional drawing



### Classifications

#### eCl@ss

|            |          |
|------------|----------|
| eCl@ss 4.0 | 272607xx |
| eCl@ss 4.1 | 27260701 |
| eCl@ss 5.0 | 27260701 |
| eCl@ss 5.1 | 27260701 |
| eCl@ss 6.0 | 27260704 |
| eCl@ss 7.0 | 27440402 |
| eCl@ss 8.0 | 27440402 |
| eCl@ss 9.0 | 27440402 |

#### ETIM

|          |          |
|----------|----------|
| ETIM 3.0 | EC001121 |
| ETIM 4.0 | EC002637 |
| ETIM 5.0 | EC002637 |
| ETIM 6.0 | EC002637 |

#### UNSPSC

|               |          |
|---------------|----------|
| UNSPSC 6.01   | 30211810 |
| UNSPSC 7.0901 | 39121409 |
| UNSPSC 11     | 39121409 |
| UNSPSC 12.01  | 39121409 |
| UNSPSC 13.2   | 39121409 |

### Approvals

#### Approvals

#### Approvals

CSA / VDE Gutachten mit Fertigungsüberwachung / IECEE CB Scheme / CCA / cULus Recognized / EAC

#### Ex Approvals

# Base strip - MCV 1,5/ 2-G-3,81 - 1803426

## Approvals

### Approval details

|                    |  |   |       |
|--------------------|--|---|-------|
| CSA                |  | <a href="http://www.csagroup.org/services/testing-and-certification/certified-product-listing/">http://www.csagroup.org/services/testing-and-certification/certified-product-listing/</a> | 13631 |
|                    |  | B   | D     |
| Nominal current IN |  | 8 A   | 8 A   |
| Nominal voltage UN |  | 300 V   | 300 V |

|  |  |   |          |
|--|--|---|----------|
| VDE Gutachten mit<br>Fertigungsüberwachung |  | <a href="http://www.vde.com/en/Institute/OnlineService/VDE-approved-products/Pages/Online-Search.aspx">http://www.vde.com/en/Institute/OnlineService/VDE-approved-products/Pages/Online-Search.aspx</a> | 40011723 |
|  |  |   |          |
| Nominal current IN                         |  | 8 A   |          |
| Nominal voltage UN                         |  | 160 V   |          |

|                    |  |   |                |
|--------------------|--|---|----------------|
| IECEE CB Scheme    |  | <a href="http://www.iecee.org/">http://www.iecee.org/</a> | DE1-56063-B1B2 |
|                    |  |   |                |
| Nominal current IN |  | 8 A   |                |
| Nominal voltage UN |  | 160 V   |                |

|                    |  |       |                |
|--------------------|--|-------|----------------|
| CCA                |  |       | CCA/ DE1 34219 |
|                    |  |       |                |
| Nominal current IN |  | 8 A   |                |
| Nominal voltage UN |  | 160 V |                |

|                    |  |   |                 |
|--------------------|--|---|-----------------|
| cULus Recognized   |  | <a href="http://database.ul.com/cgi-bin/XYV/template/LISEXT/1FRAME/index.htm">http://database.ul.com/cgi-bin/XYV/template/LISEXT/1FRAME/index.htm</a> | E60425-20110128 |
|                    |  | B   | D               |
| Nominal current IN |  | 8 A   | 8 A             |
| Nominal voltage UN |  | 300 V   | 300 V           |

|     |  |  |         |
|-----|--|--|---------|
| EAC |  |  | B.01742 |
|-----|--|--|---------|

## Accessories

### Accessories

## Base strip - MCV 1,5/ 2-G-3,81 - 1803426

### Accessories

#### Coding element

Coding profile - CP-MSTB - 1734634



Coding profile, is inserted into the slot on the plug or inverted header, red insulating material

---

#### Labeled terminal marker

Marker card - SK 3,81/2,8:FORTL.ZAHLEN - 0804109



Marker card, Card, white, labeled, Horizontal: Consecutive numbers 1 - 10, 11 - 20, etc. up to 91 - (99)100, Mounting type: Adhesive, for terminal block width: 3.81 mm, Lettering field: 3.81 x 2.8 mm

---

#### Marker pen

Marker pen - B-STIFT - 1051993



Marker pen, for manual labeling of unprinted Zack strips, smear-proof and waterproof, line thickness 0.5 mm

---

#### Additional products

Printed-circuit board connector - FMC 1,5/ 2-ST-3,81 - 1745894



Plug component, Nominal current: 8 A, Rated voltage (III/2): 160 V, Number of positions: 2, Pitch: 3.81 mm, Connection method: Push-in spring connection, Color: green, Contact surface: Tin

Printed-circuit board connector - MC 1,5/ 2-ST-3,81 - 1803578



Plug component, Nominal current: 8 A, Rated voltage (III/2): 160 V, Number of positions: 2, Pitch: 3.81 mm, Connection method: Screw connection with tension sleeve, Color: green, Contact surface: Tin

## Base strip - MCV 1,5/ 2-G-3,81 - 1803426

### Accessories

Printed-circuit board connector - MCVW 1,5/ 2-ST-3,81 - 1826979



Plug component, Nominal current: 8 A, Rated voltage (III/2): 160 V, Number of positions: 2, Pitch: 3.81 mm, Connection method: Screw connection with tension sleeve, Color: green, Contact surface: Tin

Printed-circuit board connector - MCVR 1,5/ 2-ST-3,81 - 1827127



Plug component, Nominal current: 8 A, Rated voltage (III/2): 160 V, Number of positions: 2, Pitch: 3.81 mm, Connection method: Screw connection with tension sleeve, Color: green, Contact surface: Tin

Printed-circuit board connector - FRONT-MC 1,5/ 2-ST-3,81 - 1850660



Plug component, Nominal current: 8 A, Rated voltage (III/2): 160 V, Number of positions: 2, Pitch: 3.81 mm, Connection method: Front screw connection, Color: green, Contact surface: Tin

Printed-circuit board connector - FK-MCP 1,5/ 2-ST-3,81 - 1851041



Plug component, Nominal current: 8 A, Rated voltage (III/2): 160 V, Number of positions: 2, Pitch: 3.81 mm, Connection method: Push-in spring connection, Color: green, Contact surface: Tin

Printed-circuit board connector - MCC 1/ 2-STZ-3,81 - 1852176

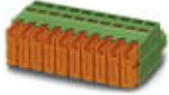


Plug component, Nominal current: 8 A, Rated voltage (III/2): 160 V, Number of positions: 2, Pitch: 3.81 mm, Connection method: Crimp connection, Color: green, Corresponding female crimp contacts with current [A] and conductor cross section range [mm<sup>2</sup>] data: 5A/MCC-MT 0,2-0,35 (1859988); 8A/MCC-MT 0,5-1,0 (1859991)

## Base strip - MCV 1,5/ 2-G-3,81 - 1803426

### Accessories

Printed-circuit board connector - QC 0,5/ 2-ST-3,81 - 1897393



Plug component, Nominal current: 6 A, Rated voltage (III/2): 200 V, Number of positions: 2, Pitch: 3.81 mm, Connection method: Displacement connection, Color: green, Contact surface: Tin

---

Phoenix Contact 2016 © - all rights reserved  
<http://www.phoenixcontact.com>