

# Silicon Epitaxial Planar Small Signal Diode



## Description

These diodes are also available in other case styles including the DO-35 case with the type designation IN4148, the MiniMELF case with the type designation LL4148 and the MicroMELF case with the type designation MCL4148.

## Features

- SOD 123 package
- Fast switching
- Reverse voltage: 100 Volts
- Forward current: 150mA

## Absolute Maximum Ratings (T<sub>A</sub> = 25°C)

Parameter	Symbol	Value	Unit
Peak Reverse Voltage	V <sub>RM</sub>	100	V
Reverse Voltage	V <sub>R</sub>	75	V
Average Rectified Current Half Wave Rectification With Resistive Load f ≥ 50Hz (Note 1)	I <sub>F(AV)</sub>	150	mA
Non-repetitive Peak Forward Surge Current @ = 1.0μs	I <sub>FSM</sub>	2	A
Power Dissipation (Note 1)	P <sub>D</sub>	400	mW
Thermal Resistance Junction to Ambient Air (Note 1)	R <sub>θJA</sub>	450	°C/W
Junction Temperature	T <sub>J</sub>	150	°C
Storage Temperature	T <sub>STG</sub>	-65 to +150	°C

## Electrical Characteristics (T<sub>A</sub> = 25°C)

Parameter	Symbol	Test Conditions	Min.	Max.	Unit
Forward Voltage	V <sub>F</sub>	I <sub>F</sub> = 10mA	-	1	V
Reverse Current	I <sub>R</sub>	V <sub>R</sub> = 20V	-	25	nA
		V <sub>R</sub> = 75V	-	5	μA
		V <sub>R</sub> = 20V, T <sub>J</sub> = 150°C	-	50	μA
Capacitance	C <sub>T</sub>	V <sub>F</sub> = V <sub>R</sub> = 0V	-	4	pF
Reverse Recovery Time	trr	from I <sub>F</sub> = 10mA to I <sub>R</sub> = 1mA, V <sub>R</sub> = 6V, R <sub>L</sub> = 100Ω	-	4	ns
Voltage rise when switching ON (tested with 50mA pulse)	V <sub>FR</sub>	tp = 0.1us, rise time <30ns, fp = (5 to 100)kHz	-	2.5	V
Rectification Efficiency	η <sub>V</sub>	f = 100MHz, V <sub>RF</sub> = 2V	0.45	-	-

**Note:** 1. Valid provided that electrodes are kept at ambient temperature.

# Silicon Epitaxial Planar Small Signal Diode



## Rating and Characteristic Curves

FIG.1-FORWARD CHARACTERISTICS

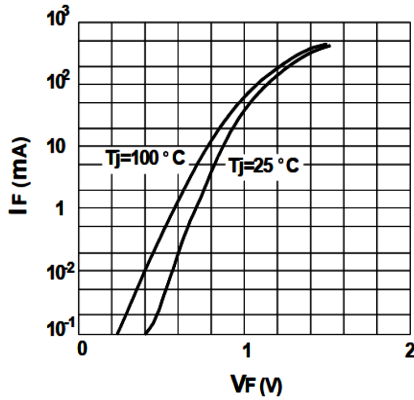


FIG.2-DYNAMIC FORWARD RESISTANCE VS. FORWARD CURRENT

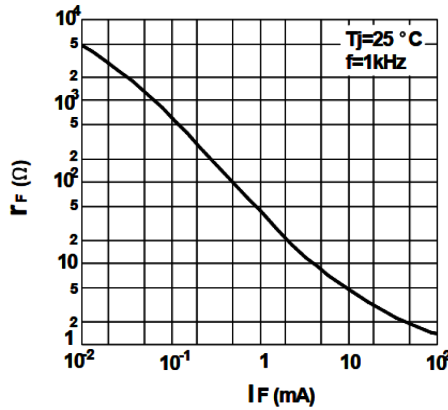


FIG.3-AMISSIBLE POWER DISSIPATION VS. AMBIENT TEMPERATURE

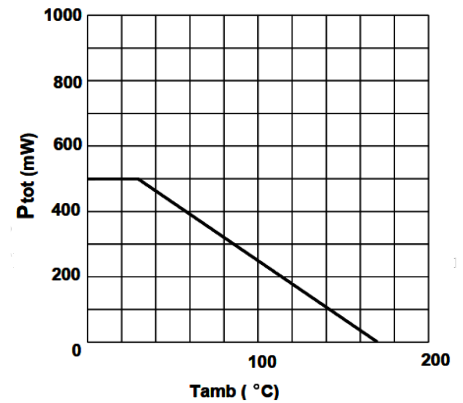


FIG.4-LEAKAGE CURRENT VS. JUNCTION TEMPERATURE

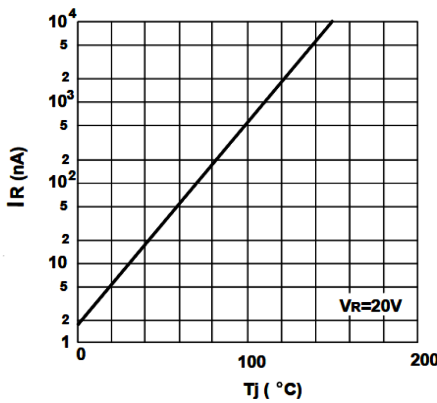


FIG.5-RECTIFICATION EFFICIENCY MEASUREMENT CIRCUIT

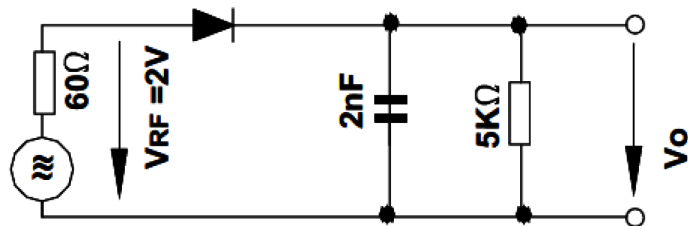


FIG.7-AMISSIBLE REPETITIVE PEAK FORWARD CURRENT VS. PULSE DURATION

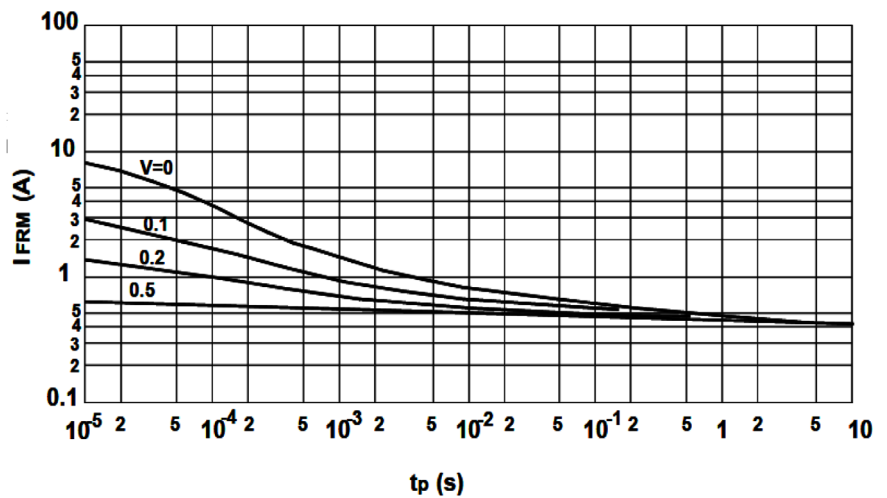
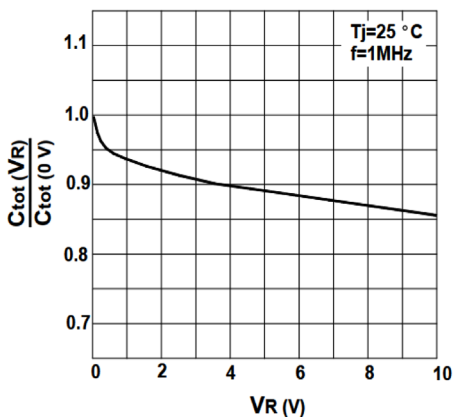


FIG.6-REVERSE CAPACITANCE VS. REVERSE

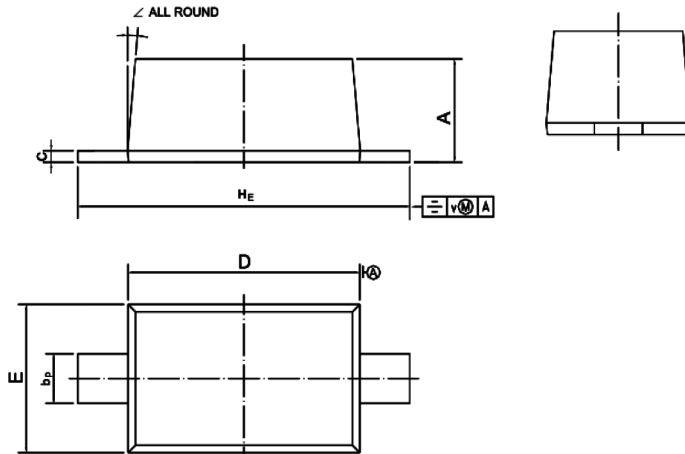


# Silicon Epitaxial Planar Small Signal Diode



## Dimensions:

SOD-123



Unit	A	bp	C	D	E	H <sub>E</sub>	v	∠
mm	1.15	0.6	0.135	2.7	1.65	3.9	0.2	5°
	1.05	0.5	0.127	2.6	1.55	3.7		

## Part Number Table

Description	Part Number
Silicon Epitaxial Planar Small Signal Diode	1N4148W+

**Important Notice :** This data sheet and its contents (the "Information") belong to the members of the Premier Farnell group of companies (the "Group") or are licensed to it. No licence is granted for the use of it other than for information purposes in connection with the products to which it relates. No licence of any intellectual property rights is granted. The Information is subject to change without notice and replaces all data sheets previously supplied. The Information supplied is believed to be accurate but the Group assumes no responsibility for its accuracy or completeness, any error in or omission from it or for any use made of it. Users of this data sheet should check for themselves the Information and the suitability of the products for their purpose and not make any assumptions based on information included or omitted. Liability for loss or damage resulting from any reliance on the Information or use of it (including liability resulting from negligence or where the Group was aware of the possibility of such loss or damage arising) is excluded. This will not operate to limit or restrict the Group's liability for death or personal injury resulting from its negligence. Multicomp is the registered trademark of the Group. © Premier Farnell Limited 2016.

www.element14.com  
www.farnell.com  
www.newark.com

