

## Flush-type connector - SACC-DSI-M12MS-4CON-M16/0,5 - 1419629

Please be informed that the data shown in this PDF Document is generated from our Online Catalog. Please find the complete data in the user's documentation. Our General Terms of Use for Downloads are valid (<http://phoenixcontact.com/download>)




Sensor/actuator flush-type plug, 4-pos., M12 SPEEDCON, rear/screw mounting with M16 thread, with 0.5 m TPE litz wire, 4 x 0.34 mm<sup>2</sup>

### Why buy this product

- ✓ Pre-assembled with litz wires for immediate use
- ✓ Customer-specific assemblies and litz wire lengths available
- ✓ Sealed on the litz wire side for optimum leak-tightness
- ✓ All standard pin assignments and codings for signal, data, and power transmission with a uniform design-in design
- ✓ For high transmission safety: shield connection to the housing with optional EMC nut
- ✓ SPEEDCON fast locking system reduces cabling times



### Key Commercial Data

|                                      |   |
|--------------------------------------|---|
| Packing unit                         | 1 STK   |
| GTIN                                 | <br>4 046356 533478 |
| GTIN                                 | 4046356533478   |
| Weight per Piece (excluding packing) | 23.480 g  |
| Custom tariff number                 | 85444290  |
| Country of origin                    | Germany   |

### Technical data

#### Dimensions

|                 |       |
|-----------------|-------|
| Length of cable | 0.5 m |
|-----------------|-------|

#### Ambient conditions

|                                 |                                  |
|---------------------------------|----------------------------------|
| Ambient temperature (operation) | -25 °C ... 85 °C (Plug / socket) |
| Degree of protection            | IP67                             |
|                                 | IP67                             |

#### General

# Flush-type connector - SACC-DSI-M12MS-4CON-M16/0,5 - 1419629

## Technical data

### General

|                             |  |
|-----------------------------|--|
| Note                        | The electrical and mechanical data specified assume that the connector pair is correctly locked and mounted. If the connector is unlocked and if there is a danger of contamination, the connector must be sealed using a protective cap > IP54. Influences arising from litz wires, cables or PCB assembly must also be taken into consideration. |
| Rated current at 40°C       | 4 A  |
| Rated voltage               | 250 V  |
| Rated surge voltage         | 2.5 kV   |
| Number of positions         | 4  |
| Insulation resistance       | ≥ 100 MΩ   |
| Coding                      | A - standard   |
| Standards/regulations       | M12 connector IEC 61076-2-101  |
| Signal type/category        | Universal  |
| Status display              | No   |
| Overvoltage category        | II   |
| Degree of pollution         | 3  |
| Connection method           | Individual wires   |
| Insertion/withdrawal cycles | > 100  |
| Torque                      | 3 Nm ... 4 Nm (Installation-side)  |
| Mounting type               | Rear mounting M16 x 1.5 With flat nut  |

### Material

|  |                              |
|--|------------------------------|
| Flammability rating according to UL 94 | V0                           |
| Contact material                       | CuZn                         |
| Contact surface material               | Au                           |
| Contact carrier material               | PA 66                        |
| Material, knurls                       | Zinc die-cast, nickel-plated |
| Sealing material                       | FKM                          |

### Cable

|                                    |                               |
|------------------------------------|-------------------------------|
| Cable type                         | TPE litz wire                 |
| Conductor cross section            | 0.34 mm <sup>2</sup>          |
| AWG signal line                    | 22                            |
| Conductor structure signal line    | 7x 0.25 mm                    |
| Core diameter including insulation | 1.2 mm ±0.07 mm               |
| Thickness, insulation              | 0.21 mm (Core insulation)     |
| Wire colors                        | brown, white, blue, black     |
| Material conductor insulation      | TPE                           |
| Conductor material                 | Tin-plated Cu litz wires      |
| Standards/specifications           | M12 connector IEC 61076-2-101 |
| Insulation resistance              | ≥ 20 MΩ*km                    |
| Conductor resistance               | ≤ 57.6 mΩ/m                   |
| Nominal voltage, cable             | 300 V                         |

# Flush-type connector - SACC-DSI-M12MS-4CON-M16/0,5 - 1419629

## Technical data

### Cable

|                                 |   |
|---------------------------------|---|
| Test voltage, cable             | 2000 V AC                                       |
| Ambient temperature (operation) | -40 °C ... 85 °C (cable, fixed installation)    |
|                                 | -25 °C ... 85 °C (cable, flexible installation) |

### Standards and Regulations

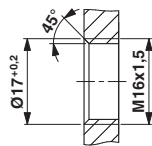
|  |                 |
|--|-----------------|
| Standard designation                   | M12 connector   |
| Standards/regulations                  | IEC 61076-2-101 |
| Flammability rating according to UL 94 | V0              |

### Environmental Product Compliance

|            |   |
|------------|---|
| China RoHS | Environmentally Friendly Use Period = 50  |
|            | For details about hazardous substances go to tab "Downloads", Category "Manufacturer's declaration" |

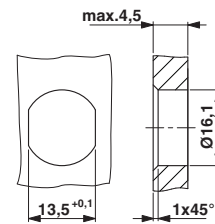
## Drawings

Dimensional drawing



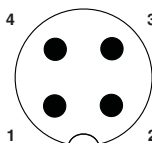
Housing cutout for M16 fastening thread, mounting panel with thread

Dimensional drawing



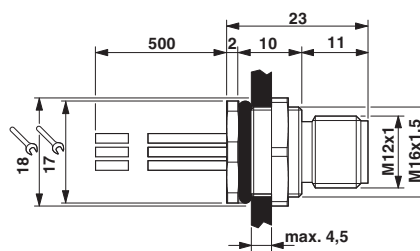
Housing cutout for M16 fastening thread, mounting panel with feed-through hole (alternatively with area as anti-rotation protection for panel thicknesses > 2 mm up to max. 4.5 mm)

Schematic diagram



Pin assignment of M12 male connector, 4-pos., A-coded, view of connector side

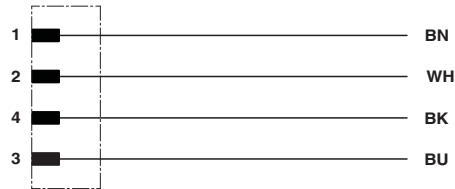
Dimensional drawing



M12 flush-type plug

# Flush-type connector - SACC-DSI-M12MS-4CON-M16/0,5 - 1419629

Circuit diagram



Contact assignment of the M12 plug and the M12 socket

## Classifications

### eCl@ss

|            |          |
|------------|----------|
| eCl@ss 4.0 | 27140815 |
| eCl@ss 4.1 | 27140815 |
| eCl@ss 5.0 | 27143423 |
| eCl@ss 5.1 | 27143423 |
| eCl@ss 6.0 | 27279220 |
| eCl@ss 7.0 | 27440103 |
| eCl@ss 8.0 | 27440103 |
| eCl@ss 9.0 | 27440102 |

### ETIM

|          |          |
|----------|----------|
| ETIM 2.0 | EC001297 |
| ETIM 3.0 | EC002061 |
| ETIM 4.0 | EC002061 |
| ETIM 5.0 | EC002061 |
| ETIM 6.0 | EC002061 |

### UNSPSC

|               |          |
|---------------|----------|
| UNSPSC 6.01   | 31251501 |
| UNSPSC 7.0901 | 31251501 |
| UNSPSC 11     | 31251501 |
| UNSPSC 12.01  | 31251501 |
| UNSPSC 13.2   | 39121413 |

## Approvals

### Approvals

#### Approvals

UL Recognized / EAC / cULus Recognized

# Flush-type connector - SACC-DSI-M12MS-4CON-M16/0,5 - 1419629

## Approvals

Ex Approvals

### Approval details

|                                |       |   |               |
|--------------------------------|-------|---|---------------|
| UL Recognized                  |       | <a href="http://database.ul.com/cgi-bin/XYV/template/LISEXT/1FRAME/index.htm">http://database.ul.com/cgi-bin/XYV/template/LISEXT/1FRAME/index.htm</a> | FILE E 118976 |
| mm <sup>2</sup> /AWG/kcmil     | 26-20 |   |               |
| Nominal current I <sub>N</sub> | 4 A   |   |               |
| Nominal voltage U <sub>N</sub> | 250 V |   |               |

|     |  |         |
|-----|--|---------|
| EAC |  | B.00767 |
|-----|--|---------|

|                                |       |   |                  |
|--------------------------------|-------|---|------------------|
| cULus Recognized               |       | <a href="http://database.ul.com/cgi-bin/XYV/template/LISEXT/1FRAME/index.htm">http://database.ul.com/cgi-bin/XYV/template/LISEXT/1FRAME/index.htm</a> | E221474-20140616 |
| mm <sup>2</sup> /AWG/kcmil     | 22-20 |   |                  |
| Nominal current I <sub>N</sub> | 4 A   |   |                  |
| Nominal voltage U <sub>N</sub> | 250 V |   |                  |

## Accessories

### Accessories

#### Protective cap

Sealing cap - PROT-M12 FS - 1560251



M12 sealing cap for unoccupied M12 plugs of the sensor/actuator cable, flush-type plugs and I/O devices in the field

Sealing cap - PROT-M12 FS-M - 1430488



M12 metal sealing cap for unoccupied M12 plugs of the sensor/actuator cable, flush-type plugs and I/O devices in the field

## Flush-type connector - SACC-DSI-M12MS-4CON-M16/0,5 - 1419629

### Accessories

---

#### Seal

Flat gasket - SACC-M16-SEAL CLM - 1430394



M16 flat gasket, for rear mounting of M12 flush-type connectors with M16 fastening thread

---