

Device connector, front mounting - SH-8EPS48AWA00S - 1621570

Please be informed that the data shown in this PDF Document is generated from our Online Catalog. Please find the complete data in the user's documentation. Our General Terms of Use for Downloads are valid (<http://phoenixcontact.com/download>)



Device connector for front wall, straight, shielded: yes, Screw locking, M23, Number of positions: 8+4+PE, Type of contact: Male connector, Crimp connection, Axial O-ring, 4x Ø 3.2, Flange dimensions: 26 mm x 26 mm

The figure shows the product version with CAT5 interface

Why buy this product

- All housing can be fitted with pin or socket contacts
- A total of eight contacts are available for signal transmission
- Safe use in the field, thanks to high degree of protection
- Consistent EMC protection for reliable connection solutions in the industrial environment



Key Commercial Data

Packing unit	1 STK
GTIN	 4 046356 937184
GTIN	4046356937184
Weight per Piece (excluding packing)	49.600 g
Custom tariff number	85366990
Country of origin	Germany
Note	Made to Order (non-returnable)

Technical data

Temperature range

Ambient temperature (operation)	-40 °C ... 130 °C
---------------------------------	-------------------

Data of the insulating body

Note	Order information: Crimp contacts, 8 x Ø 1 mm, 5 x Ø 2 mm, order separately
Coding	N
Insulator material	Polyamide (PA 6.6)
Insertion/withdrawal cycles mechanical	100

Device connector, front mounting - SH-8EPS48AWA00S - 1621570

Technical data

Data of the insulating body

Contact connection method	Crimp connection
Type of contacts	Male connector
Number of positions	13
Contact diameter of power contacts	2 mm
Litz wire cross section of power contacts min.	0.25 mm ²
Litz wire cross section of power contacts max.	4 mm ²
Nominal current per power contact at 25°C	30 A
Nominal voltage, power contact	630 V AC
Rated surge voltage	6 kV
Contact diameter of signal contacts	1 mm
Litz wire cross section of signal contacts min.	0.06 mm ²
Litz wire cross section of signal contacts max.	1 mm ²
Nominal current per signal contact at 25°C	8 A
Nominal voltage, signal contact	50 V
Rated surge voltage	1.5 kV
Overvoltage category	III
Degree of pollution	3

Housing data

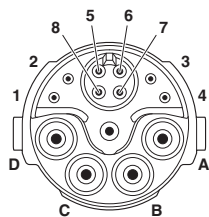
Housing material	Turned parts: copper zinc alloy (CuZn), die-cast parts: zinc (GD-Zn)
Flange dimensions	26 mm x 26 mm
Type of locking	Screw locking
Degree of protection (when plugged in)	IP67
	IP68
Thread type	M23

Environmental Product Compliance

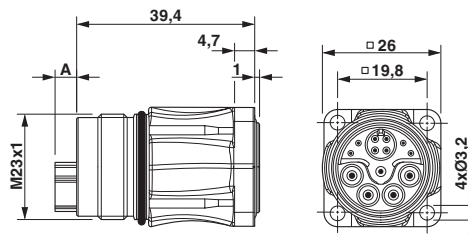
China RoHS	Environmentally Friendly Use Period = 50
	For details about hazardous substances go to tab "Downloads", Category "Manufacturer's declaration"

Drawings

Schematic diagram



Dimensional drawing

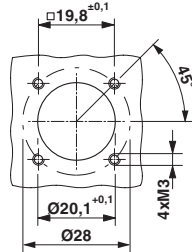


Pin assignment of pin, signal

Pin version: dimension A = 4.75 mm, socket version: dimension A = 0 mm

Device connector, front mounting - SH-8EPS48AWA00S - 1621570

Dimensional drawing



Installation dimensions

Classifications

eCl@ss

eCl@ss 4.0	272607xx
eCl@ss 4.1	27260701
eCl@ss 5.0	27143424
eCl@ss 5.1	27143424
eCl@ss 6.0	27143424
eCl@ss 7.0	27440209
eCl@ss 8.0	27440102
eCl@ss 9.0	27440103

ETIM

ETIM 4.0	EC002635
ETIM 5.0	EC002635
ETIM 6.0	EC002635

UNSPSC

UNSPSC 13.2	39121413
-------------	----------

Approvals

Approvals



Approvals

EAC



Ex Approvals



Approval details

Device connector, front mounting - SH-8EPS48AWA00S - 1621570

Approvals

EAC		B.01742
-----	--	---------

Accessories

Accessories

Crimp contact

Crimp contact - ST-10KP010 - 1618255



Crimp contact, turned, Single contact, Contact diameter: 1 mm, Crimp range: 0.06 mm²...0.25 mm²

Crimp contact - ST-10KP020 - 1618256



Crimp contact, turned, Single contact, Contact diameter: 1 mm, Crimp range: 0.34 mm²...0.5 mm²

Crimp contact - ST-10KP030 - 1618261



Crimp contact, turned, Single contact, Contact diameter: 1 mm, Crimp range: 0.5 mm²...1 mm²

Crimp contact - SF-20KP021 - 1621579



Crimp contact, turned, Contact diameter: 2 mm, Crimp range: 0.25 mm²...1 mm²

Device connector, front mounting - SH-8EPS48AWA00S - 1621570

Accessories

Crimp contact - SF-20KP022 - 1621580



Crimp contact, turned, Contact diameter: 2 mm, Crimp range: 1.5 mm²...2.5 mm²

Crimp contact - SF-20KP023 - 1621581



Crimp contact, turned, Contact diameter: 2 mm, Crimp range: 2.5 mm²...4 mm²

Mounting material

Color-coding - RF-Z0017 - 1620624



Color-coding, Color: green

Color-coding - RF-Z0018 - 1620625



Color-coding, Color: orange

Color-coding - RF-Z0019 - 1620626



Color-coding, Color: black

Protective cover

Device connector, front mounting - SH-8EPS48AWA00S - 1621570

Accessories

Metal dust protection cap - SH-Z2302 - 1622139



Metal dust protection cap with steel wire for M23 hybrid connectors with external thread

Plastic dust protection cap - SH-Z2304 - 1622137



Plastic dust protection cap for M23 hybrid connectors with external thread

Metal dust protection cap - SH-Z2303 - 1622138



Metal dust protection cap for M23 hybrid connectors with external thread
