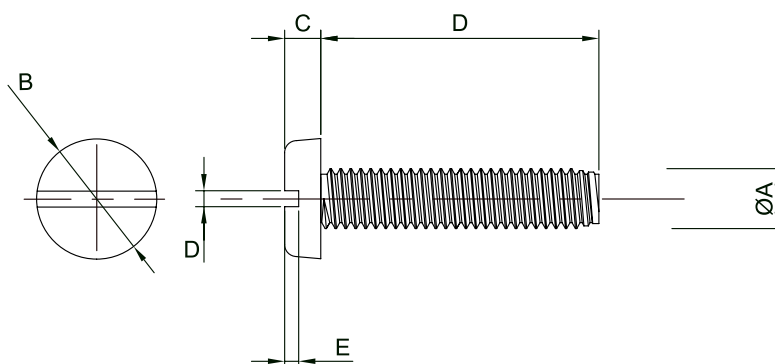


BLK Pan Screw



Specification

Material : Steel
Finish : Commercial Zinc/Black Cr3



Dimension Table

Part Number	ØA	B Nom	C Max.	D Nom	E Min.	F Length
DT000158	M3-0.5	6mm	1.8mm	0.8mm	0.7mm	6mm
DT000159						10mm
DT000160						12mm
DT000161	M4-0.7	8mm	2.4mm	1.2mm	1mm	10mm
DT000162						12mm

Part Number Table

Description	Part Number
BLK Pan Screw, M3X6, BX100	DT000158
BLK Pan Screw, M3X10, BX100	DT000159
BLK Pan Screw, M3X12, BX100	DT000160
BLK Pan Screw, M4X10, BX100	DT000161
BLK Pan Screw, M4X12, BX100	DT000162

Important Notice : This data sheet and its contents (the "Information") belong to the members of the Premier Farnell group of companies (the "Group") or are licensed to it. No licence is granted for the use of it other than for information purposes in connection with the products to which it relates. No licence of any intellectual property rights is granted. The Information is subject to change without notice and replaces all data sheets previously supplied. The Information supplied is believed to be accurate but the Group assumes no responsibility for its accuracy or completeness, any error in or omission from it or for any use made of it. Users of this data sheet should check for themselves the Information and the suitability of the products for their purpose and not make any assumptions based on information included or omitted. Liability for loss or damage resulting from any reliance on the Information or use of it (including liability resulting from negligence or where the Group was aware of the possibility of such loss or damage arising) is excluded. This will not operate to limit or restrict the Group's liability for death or personal injury resulting from its negligence. DURATOOL is the registered trademark of the Group. © Premier Farnell Limited 2016.

