

## On-Wall Distributed Speakers

# CE500A-BK CE500A-WH

### High-Performance, Active 80-Watt Business Environment Speaker System

- Multi-purpose, 80-Watt, active speaker for commercial indoor installations (restaurants, shops, exhibitions), multimedia, home recording studio and audio/video production
- Exceptional sound quality, wide dynamic range and ultra-linear frequency range from 60 Hz to 23 kHz
- Powerful 5 ½" woofer with extremely light-weight cellulose cone and high-resolution ½" tweeter
- Integrated limiter for ultimate system control and speaker protection
- Ultra-low noise Mic/Line input with Volume control and peak LED
- Additional Line output connector allows linking of additional speaker systems
- Available in black (CE500A-BK) or white (CE500A-WH)
- Ultra-flexible wall-mount brackets included
- High-quality components and exceptionally rugged construction ensure long life
- Conceived and designed by BEHRINGER Germany



For way too long, boardrooms, classrooms and restaurants around the world have had to put up with bad sound. You know, the kind generated by those flimsy “tin-cans-mounted-in-ceiling-tiles” (that no one seems to remember ever having installed in the first place). You can kiss “bad sound” goodbye forever thanks to the great-sounding new CE500A loudspeaker systems from BEHRINGER — and they’re available in your choice of black or white.

#### We Mean Business

The CE500A speaker system is ideal for business environments, letting you enjoy full, clear sound over a wide listening area. Specifically designed to complement commercial indoor facilities such as restaurants, shops, exhibition halls and more, CE500As come equipped with special mounting brackets, allowing them

to be mounted on walls or suspended from above. This means you can aim them, which is handy considering people have ears on the sides of their heads, not the top!

#### More Like Studio Monitors Than “Tin-Cans”

Inside these multi-purpose active loudspeakers are powerful 5 ½" woofers and high-resolution ½" tweeters powered by an internal 80-Watt amplifier. These transducers have been designed to work with the onboard amp seamlessly, meaning there is not too much, or even worse, too little wattage to adequately power the system. And the sound quality of the CE500A puts those aforementioned “tin-cans” to shame.

*Continued on next page*



# CE500A-BK CE500A-WH

## Serious Connections

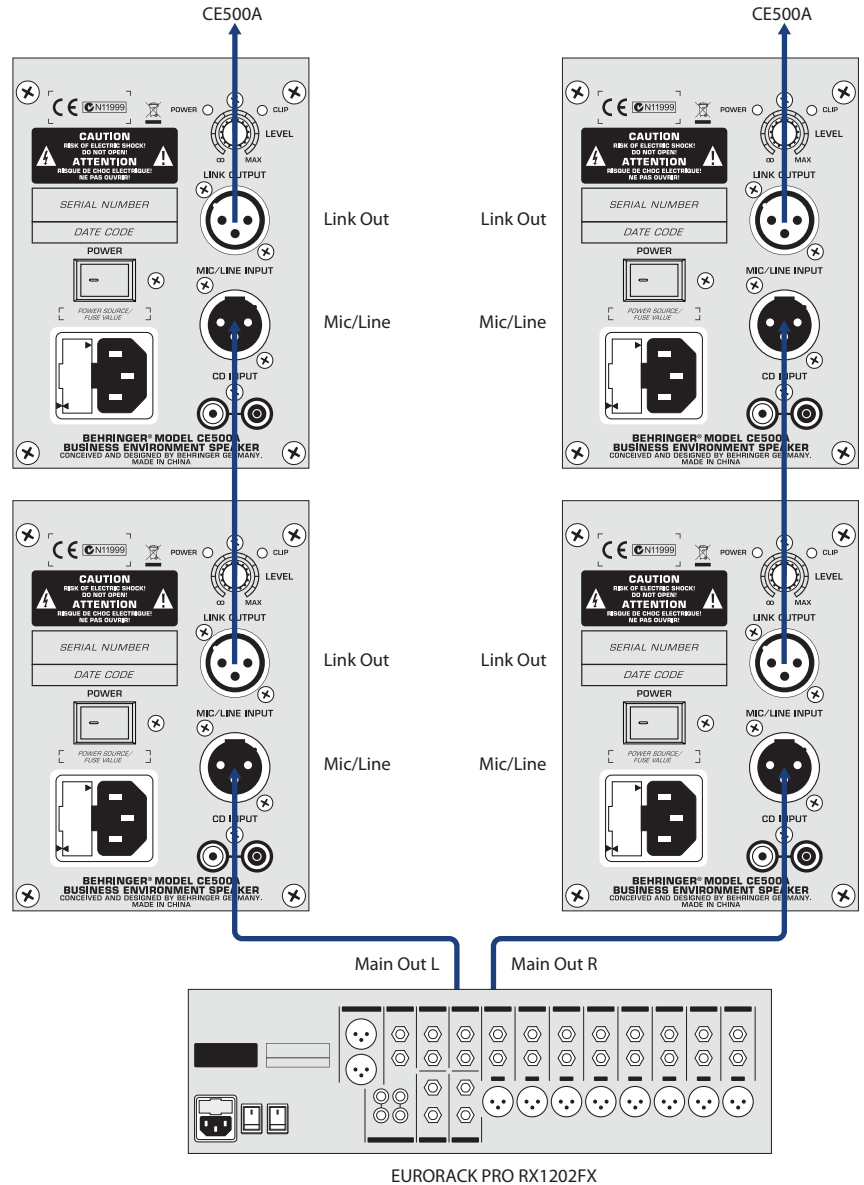
Connecting the CE500A couldn't be easier, thanks to the convenient rear panel which provides a standard XLR mic socket and RCA jacks for hooking up a tape/CD or even MP3 deck. To raise and lower the mic volume, just turn the Level control (RCA volume levels are controlled by the source device). To run two CE500As in stereo mode, connect your playback deck to the right RCA jack on one loudspeaker and the left jack on the other. You can even chain together as many CE500As as you'd like via the handy Link XLR socket.

## Instant PA System

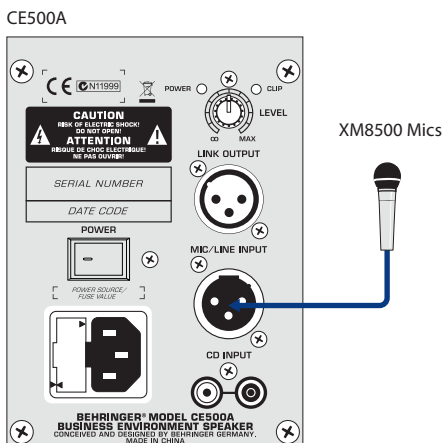
You don't even need a mixer to use the CE500A. You can plug one into the wall outlet, connect a microphone and start talking — sometimes that's all you need. That's why we include a special adapter that lets you mount the CE500A on a standard mic stand. It's like having your own personal 80-Watt megaphone!

Whether you need speakers for the conference room, the waiting room or the lobby, the new CE500A business speakers will elevate your company status and get your message across. Stop yelling into those tin-cans... everyone will thank you.

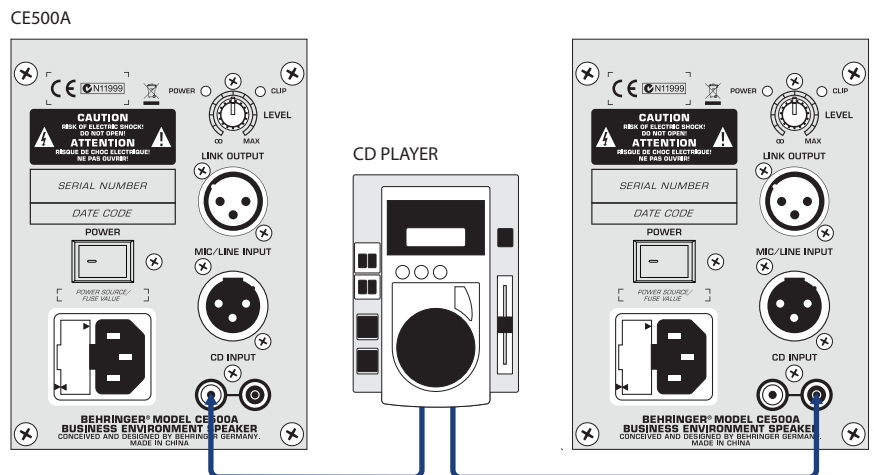
## Linking multiple CE500As



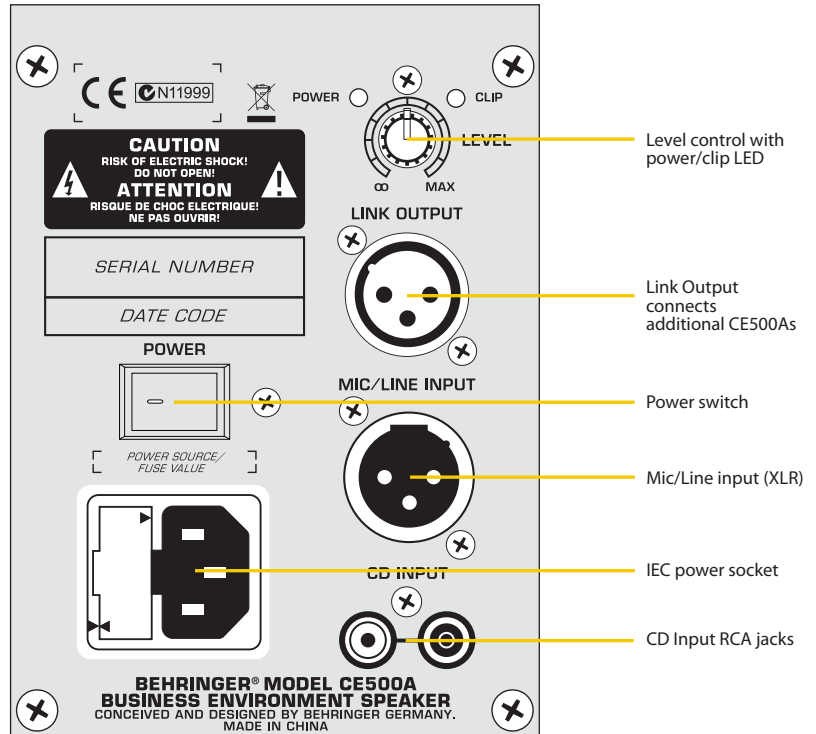
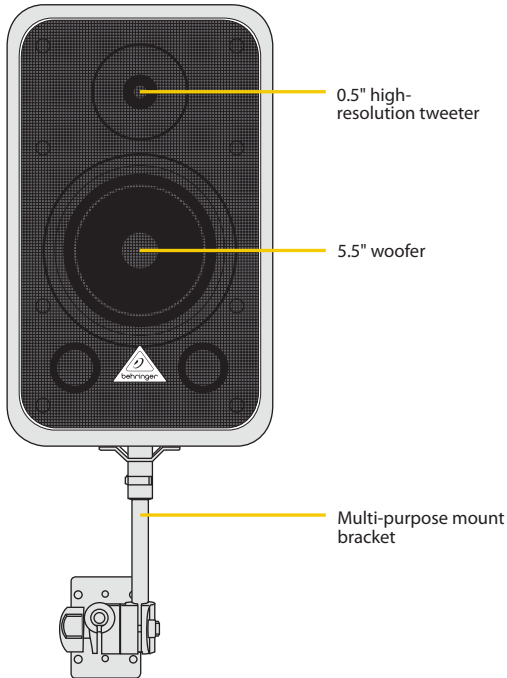
## Simple PA



## Stereo Connection



# CE500A-BK CE500A-WH



## SPECIFICATIONS

### Components

Tweeter	1/2"
Woofer	5 1/2"

### OUTPUT POWER

RMS @ 0.1 % THD	50 W
Peak Power	80 W

### AUDIO INPUTS

MIC/LINE	XLR, balanced
Input impedance	27 kOhm
Sensitivity	-40 dB to +10 dB
CD/TAPE RCA Input impedance	27 kOhm

## AUDIO OUTPUT

LINK OUTPUT	XLR, balanced
-------------	---------------

### SYSTEM DATA

Frequency range	60 Hz – 23 kHz (-10 dB)
Crossover frequency	5 kHz
Max. sound pressure level	112 dB
Limiters	optical

### POWER SUPPLY

Power consumption	max. 150 W
Mains connector	IEC standard receptacle

### FUSE

	100 - 120 V~: T 2.5 A H 250 V
	200 - 240 V~: T 1.5 A H 250 V

## DIMENSIONS/WEIGHT

Dimensions (H x W x D)	12.5 x 7.7 x 7.8" 318 x 195 x 197 mm
Weight	15 lbs / 7 kg

Please note these specifications are preliminary and conceptual in nature, and as such are subject to change as product development progresses. This information is supplied for market research purposes only and is not to be made public in any manner. This document is solely the property of The MUSIC Group, or one of its subsidiaries, and must be surrendered upon request of the owner.

For service, support or more information contact the BEHRINGER location nearest you:

**Europe**  
MUSIC Group Services UK  
Tel: +44 156 273 2290  
Email: CARE@music-group.com

**USA/Canada**  
MUSIC Group Services NV Inc.  
Tel: +1 702 800 8290  
Email: CARE@music-group.com

**Japan**  
MUSIC Group Services JP K.K.  
Tel: +81 3 6231 0454  
Email: CARE@music-group.com

Technical specifications and appearances are subject to change without notice and accuracy is not guaranteed. BEHRINGER is part of the MUSIC Group (music-group.com). All trademarks are the property of their respective owners. MUSIC Group accepts no liability for any loss which may be suffered by any person who relies either wholly or in part upon any description, photograph or statement contained herein. Colors and specifications may vary from actual product. MUSIC Group products are sold through authorized fulfillers and resellers only. Fulfillers and resellers are not agents of MUSIC Group and have absolutely no authority to bind MUSIC Group by any express or implied undertaking or representation. This manual is copyrighted. No part of this manual may be reproduced or transmitted in any form or by any means, electronic or mechanical, including photocopying and recording of any kind, for any purpose, without the express written permission of MUSIC Group IP Ltd. ALL RIGHTS RESERVED. © 2012 MUSIC Group IP Ltd. Trident Chambers, Wickhams Cay, P.O. Box 146, Road Town, Tortola, British Virgin Islands. 985-10000-00385