

Modesty Series

Sure A2100 2 x 100 Watt 6 Ohm Class D Audio Amplifier Starter (AA-AS32186)



Key Features:

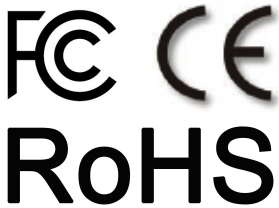
- Multiple Audio Input Source
- Bass Output for Subwoofer
- IR Remote and Rotary Encoder Switch Control
- Full Protection
- Low Power Consumption
- Stereo Headphone Amplifier
- Aluminum Anodizing Housing
- Weight:898g/1.98 lbs. (±10%)
- Size:8.30inchX4.90inchX1.90inch

Environmental Conditions:

- Humidity: 5-85% RH Non-condensing
- Operating Temperature Ambient: 0°C to +55°C
- Storage Temperature: -40°C to 85°C

All these boards are per-tested with our power supply solution to comply with FCC and CE. For all customers who need those information, please contact our distributor or Sure Electronics. RoHS compliant will need an MOQ of 1000pcs per order.

Ready for:



Electrical Specifications

Specifications typical @ +25°C , Powered by 36V DC, unless otherwise noted. Specifications subject to change without notice.

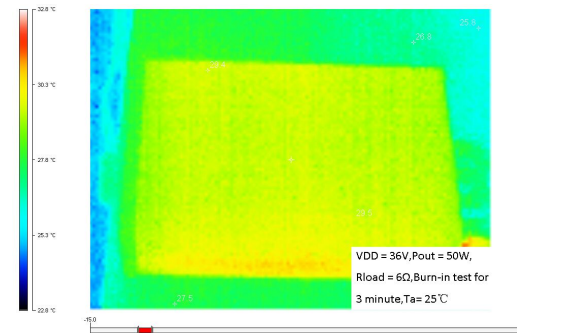
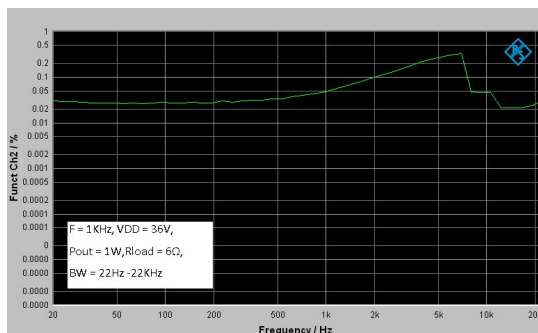
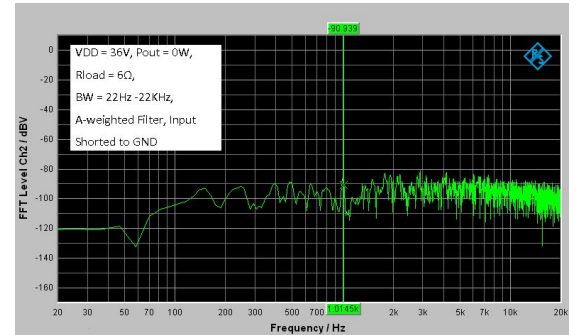
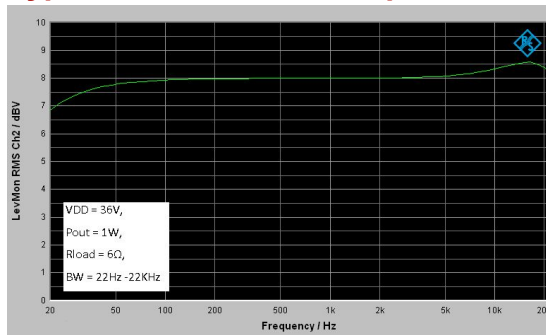
Parameter	Conditions	Min.	Typ.	Max.	Units
Power Supply	-	12	30	36	VDC
Idle Power	-	-	2.9	6	W
Standby Power	-	-	0.36	2	W
Maximum Current	200W @ 6ohm	-	7.75	-	A
Efficiency	-	86	-	91	%
Minimum Load Impedance	-	-	6	-	Ω
Switching Frequency	SD Floating	-	370	-	KHz
BT Wireless Range	Class 2	-	-	10	M

Audio Performance

Specifications typical @ +25°C , Powered by 36V DC, unless otherwise noted. Specifications subject to change without notice.

Parameter	Conditions	Min.	Typ.	Max.	Units
Gain	Max Volume Level	-	43	-	dB
Input Sensitivity(RMS)	@ 6Ohm, 100W, 1KHz, 3.5mm	-	294	-	V
	@ 6Ohm, 100W, 1KHz, RCA	-	496	-	V
Input Impedance	RCA/3.5mm	-	19	-	KΩ
Output Power	@ 6 Ohm, THD+N 1%	-	82	-	W
	@ 6 Ohm, THD+N 10%	-	100	-	W
Supports Sampling Rate	-	32, 44.1, 48, 88.2 and 96	-	-	KHz
Maximum Sampling Word Length	-	-	24	-	Bit
Bandwidth @ ±3dB	@ 6 Ohm	20	-	20K	Hz
THD	@ 6Ohm, 1W, 1KHz, 3.5mm	-	0.05	-	%
	@ 6Ohm, 1W, 1KHz, RCA	-	0.042	-	%
Output Noise Level	A-weighting, Input Connected to GND	-	620	-	uV
SNR	82W @ 6 Ohm, THD+N 1%, RCA Input	-	82	-	dB

Typical Performance Graphs



All parameters were tested with Rohde & Schwarz UPV audio analyzer (AES17 filter enabled) and AP AUX0025 filter. For authorized distributors and OEM customers who need more detailed performance graphs and parameter settings, please send an inquiry e-mail to us. (Not available for retail customers)

Model Selection Guide

Model Number	Output Power	Power Supply Range	3.5mm	RCA	BT	Toslink/Coaxial
AA-AS32157	2 X 15Watt	DC 9-14V	×	✓	×	×
AA-AS32171	2 X 50Watt	DC 12-20V	✓	✓	×	×
AA-AS32186	2 X 100Watt	DC 12-36V	✓	✓	×	×
AA-AS32971	2 X 100Watt	DC 12-36V	✓	✓	✓	✓

Suggested power supply solution:

Mean Well GS120A24-P1M Power Adapter 24V 5A 120W (PS-SP11557)

If you have other power supply requirements, please feel free to contact us.

Mechanical Dimensions

FIGURE Front panel

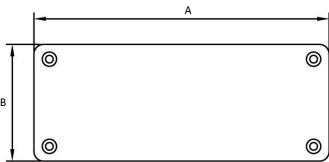


FIGURE Rear panel

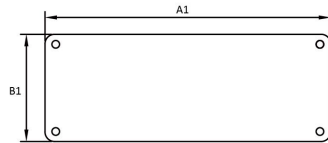
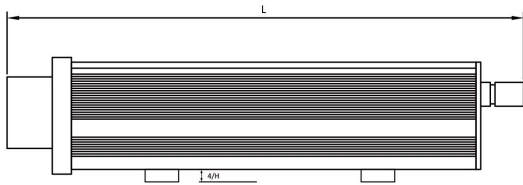


FIGURE Side view

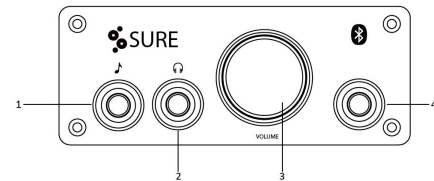
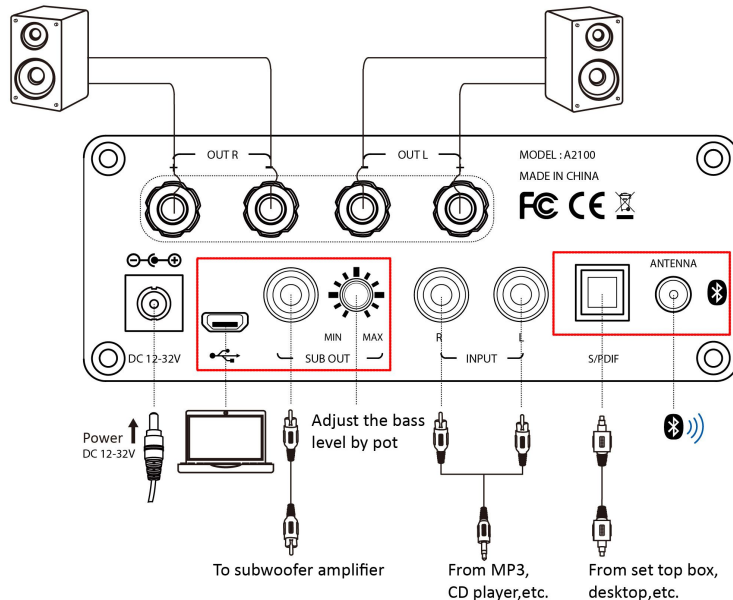


Notes:

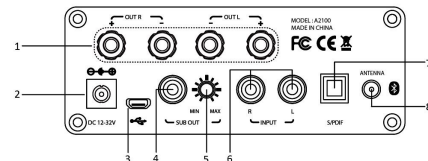
- All dimensions are typical in inches/mm
- Tolerance x.xx = ±0.02(±0.50)

Dimensions	A (inch/mm)	A1 (inch/mm)	B (inch/mm)	B1 (inch/mm)	L (inch/mm)	H (inch/mm)
#1	2.94/74.60	2.78/70.60	1.93/49.00	1.77/54.00	6.41/162.70	0.16/4.00
#2	4.88/124.00	4.72/120.00	1.93/49.00	1.77/54.00	8.36/212.40	0.16/4.00

Connections



- 1—3.5mm audio input (rear panel)
- 2—3.5mm headphone output
- 3—Volume knob
- 4—IR remote receiver (Port 4 is not included)



- 1—Speaker output
- 2—Power input
- 3—USB sound card
- 4—Subwoofer output
- 5—Subwoofer volume control
- 6—Audio signal input (RCA)
- 7—Optical fiber input
- 8—Bluetooth receiver (Port 3, 4, 5, 7, 8 are not included)