



Main

Range of product	Zelio Relay
Product or component type	Socket
Contact terminal arrangement	Mixed
Product compatibility	Plug-in relay RPM (1 C/O)
Device short name	RPZ

Complementary

[I _{th}] conventional free air thermal current	15 A
[U _e] rated operational voltage	250 V
Tightening torque	<= 1 N.m (M3.5 screw(s)) <= 0.8 N.m (M3 screw(s))
Fixing mode	By screw mounting on panel Clip-on mounting on 35 mm symmetrical DIN rail
Product weight	0.031 kg

Environment

Connections - terminals	Contact terminal - screw clamp terminals, 2 wires solid cable without cable end 0.5...4 mm ² / AWG 20...AWG 12 Contact terminal - screw clamp terminals, 1 wire solid cable without cable end 0.5...4 mm ² / AWG 20...AWG 12 Contact terminal - screw clamp terminals, 2 wires flexible cable with cable end 0.5...2.5 mm ² / AWG 20...AWG 14 Contact terminal - screw clamp terminals, 1 wire flexible cable with cable end 0.5...2.5 mm ² / AWG 20...AWG 14 Coil terminal - screw clamp terminals, 2 wires solid cable without cable end 0.5...2.5 mm ² / AWG 20...AWG 14 Coil terminal - screw clamp terminals, 1 wire solid cable without cable end 0.5...2.5 mm ² / AWG 20...AWG 14 Coil terminal - screw clamp terminals, 2 wires flexible cable with cable end 0.5...1.5 mm ² / AWG 20...AWG 16
-------------------------	---

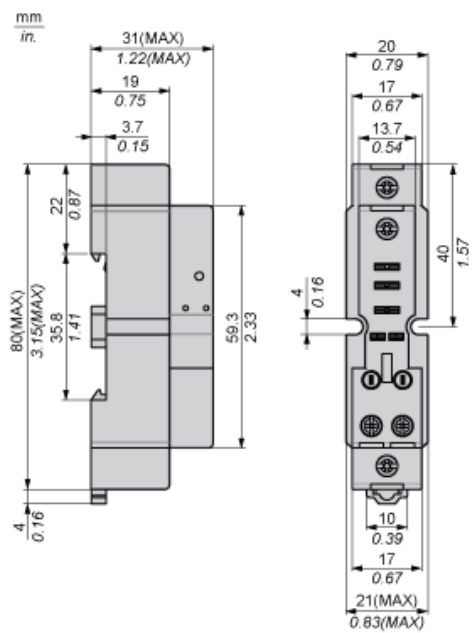
Coil terminal - screw clamp terminals, 1 wire flexible cable with cable end 0.5...1.5 mm² / AWG 20...AWG 16

Standards	IEC 61984 UL 508 CSA C22.2 No 14
Product certifications	UL REACH RoHS China RoHS CSA EAC CE
Ambient air temperature for storage	-40...85 °C
Ambient air temperature for operation	-40...55 °C
IP degree of protection	IP20 conforming to EN/IEC 60529
Dielectric strength	2500 V

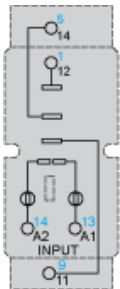
Contractual warranty

Warranty period	18 months
-----------------	-----------

Dimensions



Wiring Diagram



Symbols shown in blue correspond to Nema marking.