

# PCB TERMINAL BLOCKS

PCB  
TERMINAL  
BLOCKS

## 3.81mm Pitch Ultra Low Profile Rising Clamp Terminal Blocks

INTER-  
CONNECTION

FUSES &  
FUSE-  
HOLDERS

LEDs &  
INDICATORS

MINIATURE  
SWITCHES

LIMIT &  
SAFETY  
SWITCHES

CONTROL  
PRODUCTS

INTERFACE  
MODULES &  
SUPPORTS




RELAY  
BASES

DIN RAIL  
ENCLOSURES

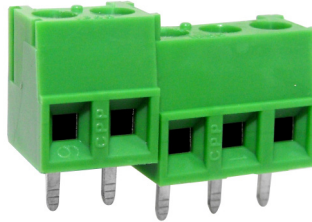
BATTERIES

SOLAR  
PANELS

TRANS-  
FORMERS

- 2-3 pole Interlocking
- 4-12 pole solid block
- Ultra low profile
- Moulded in green UL94-V0 flame retardant PA
- Professional rising clamp terminals
- 0.2-1.5mm<sup>2</sup> (30-16AWG) solid cable
- 0.2-1.0mm<sup>2</sup> (30-16AWG) stranded cable
- Captive screws
- Guided pin alignment
- Double interlock mechanism for increased strength
-    approved

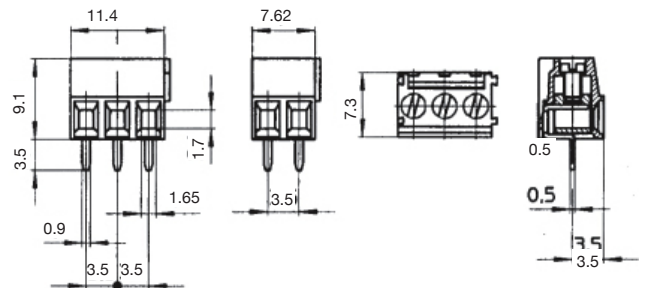
CTB0308






TYPE NO.	POLES	LENGTH
CTB0308/2	2	7.62mm
CTB0308/3	3	11.4mm
CTB0308/4	4	15.2mm
CTB0308/5	5	19.1mm
CTB0308/6	6	22.9mm
CTB0308/7	7	26.7mm
CTB0308/8	8	30.5mm
CTB0308/9	9	34.3mm
CTB0308/10	10	38.1mm
CTB0308/11	11	41.9mm
CTB0308/12	12	45.7mm

### SPECIFICATION

Rating	10A/130V UL=10A, IMQ=10A, VDE=10A
Dielectric strength	≥1.25kV
Impulse withstand voltage	2.5kV
Working temperature	110°C
Moulding	UL94-V0 flame retardant PA
Pin/terminal	Tinned, nickel plated brass
Rising clamp	Tinned, nickel plated brass
Screw/torque	M2 steel zinc plated, 0.3Nm
Recommended PCB hole size	ø1.1mm



## 3.81mm Pitch Ultra Low Profile 90° Rising Clamp Terminal Blocks

- 2-12 pole interlocking
- 4-12 pole solid block
- Ultra low profile
- Moulded in green UL94-V0 flame retardant PA
- Professional rising clamp terminals
- 0.2-1.5mm<sup>2</sup> (30-16AWG) solid cable
- 0.2-1.0mm<sup>2</sup> (30-16AWG) stranded cable
- Captive screws
- Guided pin alignment
- Double interlock mechanism for increased strength
-    approved

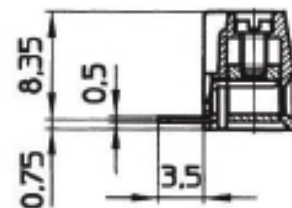
CTB0358



TYPE NO.	POLES	LENGTH
CTB0358/2	2	7.6mm
CTB0358/3	3	11.4mm
CTB0358/4	4	15.2mm
CTB0358/5	5	19.1mm
CTB0358/6	6	22.9mm
CTB0358/7	7	26.7mm
CTB0358/8	8	30.5mm
CTB0358/9	9	34.3mm
CTB0358/10	10	38.1mm
CTB0358/11	11	41.9mm
CTB0358/12	12	45.7mm

### SPECIFICATION

Rating	10A/130V UL=10A/300V, VDE&IMQ=10A/130V
Dielectric strength	≥1.25kV
Impulse withstand voltage	2.5kV
Working temperature	110°C
Moulding	UL94-V0 flame retardant PA
Pin/terminal	Tinned, nickel plated brass
Rising clamp	Tinned, nickel plated brass
Screw/torque	M2 steel zinc plated, 0.3Nm
Recommended PCB hole size	ø1.1mm



For other dimensions see CTB0308