

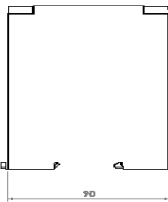
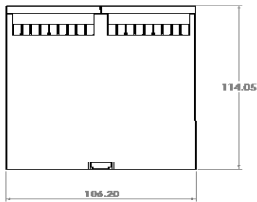
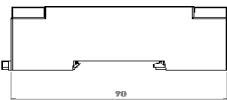
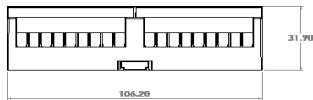
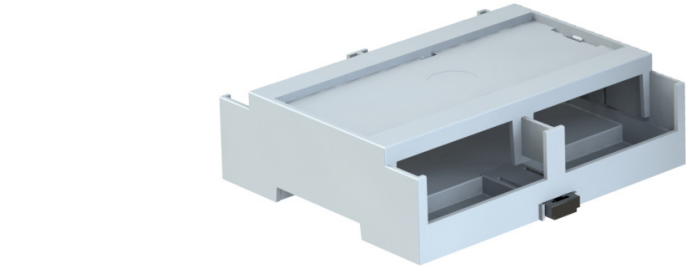
DIN RAIL ENCLOSURES

DIN Rail Instrument Enclosures

Low Profile and Deep Profile DIN Rail Mount Instrument Boxes

- Designed for 35mm DIN Rail Mounting
- DIN Clips can also be used for surface mounting the housing
- Multiple snap-in PCB positions available (horizontal & vertical)
- X2 pillars in the base for screw fixing PCB
- Snap-fit Top Covers (See CNMB)
- Snap-fit Terminal Guards (See CNMB)
- Open Top and Solid Top versions available
- Low Profile and Deep Profile variants
- Enclosure base gives isolation from DIN Rail
- Customisation options include cutouts, holes & vents
- Surfaces, Covers and Terminal guards easily customised and printed
- Moulded in UL94-V0 Polycarbonate

SPECIFICATION	
Material	Base & body- UL94-V0, Polycarbonate Clips- POM
Standard colours	RAL 7035
Standard unit includes	Body, base & clips
Accessories	Terminal guards & covers (see CNMB)



PART NO.	DESCRIPTION
CDIB/6/L2	CDIB, Size 6, Low profile, Open top, Open sides
CDIB/6ST/L2	CDIB, Size 6, Low Profile, Solid top, Open sides
CDIB/6/D2	CDIB, Size 6, Deep Profile, Open top, Open sides
CDIB/6ST/D2	CDIB, Size 6, Deep Profile, Solid top, Open sides

Kits

- Each kit contains one grey panel cover and a selection of solid and perforated terminal guards.



COMPONENT KIT PART NO.	BODY	BASE	COVER /PG	TERMINAL /TG508P	GUARD /TGS
CDIB/6/L2/KIT	1	1	1	4	2
CDIB/6/D2/KIT	1	1	1	4	2
CDIB/6ST/D2/KIT	1	1	0	4	2
CDIB/6ST/L2/KIT	1	1	0	4	2