

CAMBLOCK

10mm Pitch Standard Profile Terminal Block

- 2-12 pole interlocking
- Moulded in black
UL94-V0 PA66
- Wire protector terminals
- 0.13-1.3mm² 26-16 AWG
- Guided pin alignment

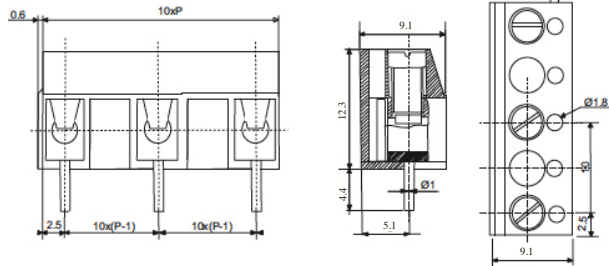
CTB2202



SPECIFICATION

Rating	16A 250V
Insulation resistance	5000MΩ/1000V
Withstand Voltage	AC1500V/1min
Contact Resistance	20mΩ
Working Temperature	-33°C to +120°C
Mouldings	UL94-V0 flame retardant PA66
Wire Protector	Stainless steel
Screw/Torque	M3 Steel, Nickel Plated 0.4Nm
Recommended PCB hole size	ø1.1mm

TYPE NO.	POLES	LENGTH
CTB2202/2	2	15mm
CTB2202/3	3	25mm
CTB2202/4	4	35mm
CTB2202/5	5	45mm
CTB2202/6	6	55mm
CTB2202/7	7	65mm
CTB2202/8	8	75mm
CTB2202/9	9	85mm
CTB2202/10	10	95mm
CTB2202/11	11	105mm
CTB2202/12	12	115mm



PCB
TERMINAL
BLOCKS