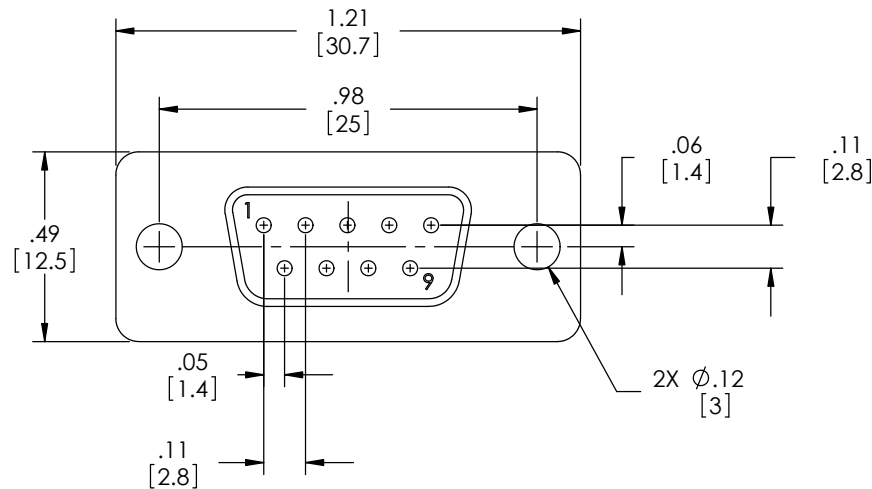
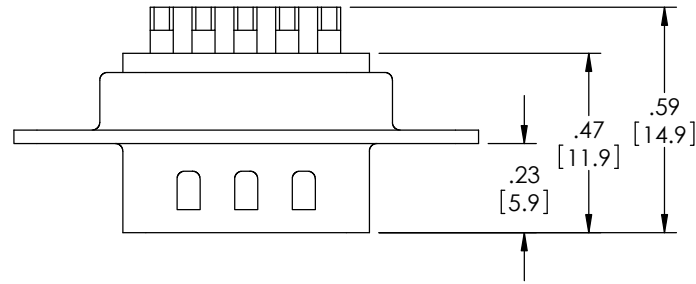


THE INFORMATION CONTAINED IN THIS DRAWING IS THE SOLE PROPERTY OF L-COM, INC. ANY REPRODUCTION IN PART OR WHOLE WITHOUT THE WRITTEN PERMISSION OF L-COM, INC. IS PROHIBITED.

REVISIONS			
REV	DESCRIPTION	DATE	APPROVED
E	ECN 4944: ADDED FRONT & BACK SHELL FINISH, ADDED PKG NOTE, DEL CURRENT RATING	8/3/10	D. CASTRO



NOTES:

MATERIAL:

CONNECTOR SHELL: STEEL
 CONNECTOR INSULATOR: THERMOPLASTIC, UL94V-0 RATED
 CONTACTS: COPPER ALLOY

FINISH:

FRONT SHELL: NICKEL PLATED
 BACK SHELL: TIN PLATED
 CONTACTS: GOLD FLASH IN CONTACT AREA OVER NICKEL PLATE
 SOLDER CUPS: TIN PLATED

ELECTRICAL:

DIELECTRIC WITHSTANDING VOLTAGE: 1000 VAC rms
 INSULATION RESISTANCE: 5000MΩ @ 500VDC

MISCELLANEOUS:

OPERATING TEMPERATURE: -55°C TO +105°C
 CONNECTOR SHALL BE PACKAGED IN ACCORDANCE WITH L-COM SPEC PS-0031.

REGULATORY COMPLIANCE:

CE2011/65/EU(RoHS DIRECTIVE)

CATALOG #	PACKAGING
SD9P	1/BAG
SD9P-TRAY	50/TRAY

UNLESS OTHERWISE SPECIFIED, DIMENSIONS ARE IN INCHES [mm] OVERALL CABLE LENGTH TOLERANCE: ≤12 [305] = +1 [25] / -0 >12 [305] ≤60 [1524] = +2 [51] / -0 >60 [1524] ≤120 [3048] = +4 [102] / -0 >120 [3048] ≤300 [7620] = +6 [152] / -0 >300 [7620] = +5% / -0% ALL OTHER DIMENSIONAL TOLERANCES: .X = ±.2 [5.08] .XX = ±.02 [5.1] .XXX = ±.005 [1.3]	APPROVALS	DATE	45 BEECHWOOD DRIVE NORTH ANDOVER, MA 01845
	DRAWN BY B.MAZEJKA	11/10/2003	
	CHECKED BY C.McCORMICK	12/08/2003	PRODUCT DESCRIPTION DB9M SOLDER CUP CONNECTOR
	APPROVED BY D.PARHAM	12/08/2003	