

Product Data Sheet



GL20

Grounding Lug

Part No: 9718102



Screw is GREEN: Universal color for grounding

Wire Range:

#2/0 - #14 AWG Cu Wire

#2/0 - #12 AWG Al Wire

[See tables below for Flexible stranded approvals.](#)

Electrical Ratings:

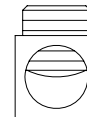
- 175A copper wire, 135A aluminum wire (Based on NEC Table 310-16, 75°C columns)

Materials:

- Connector: High conductivity aluminum, tin plated
- Terminal screws: Steel, nickel plated – painted green

Agency Approvals:

- UL Recognized, UL, File No. ZMVF2.E43665
- CSA Certified, CSA File No. 63510-25 (Wire Classes B & C only)
- RoHS Compliant



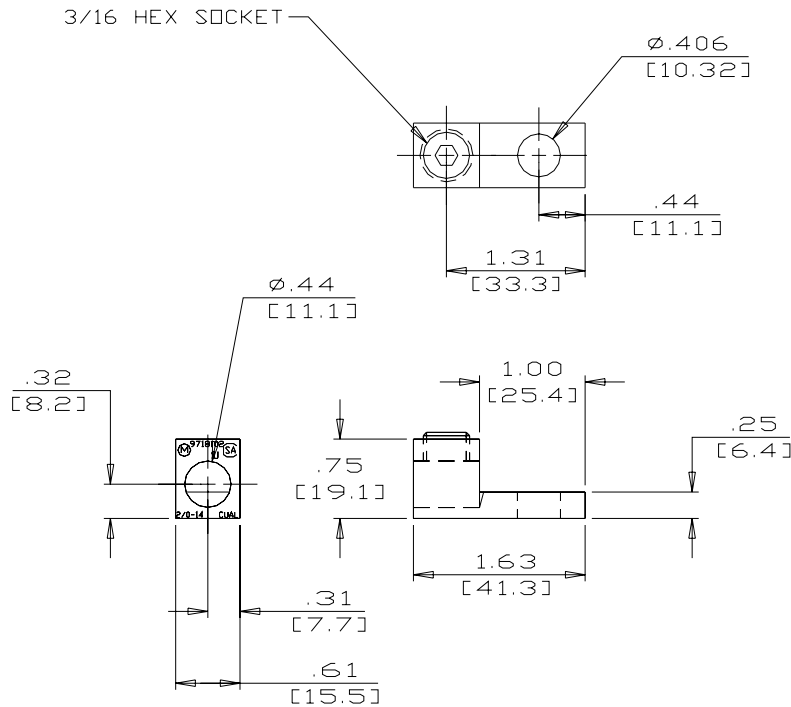
Wire Range:

Wire Size	Torque	Copper Wire Stranding Classes - Number of Strands						
		Solid	Class B	Class C	Class G	Class H	Class I	Class K
2/0 AWG	120 in. lbs		19	37				
1/0	120 in. lbs		19	37				
1	120 in. lbs		19	37	~ 133	~ 259	~ 210	~ 836
2	120 in. lbs		7	19	~ 49	~ 133	~ 161	~ 665
4	120 in. lbs		7	19	~ 49	~ 133	~ 105	~ 420
6	120 in. lbs		7	19	~ 49	~ 133	~ 63	~ 266
8	40 in. lbs		7	19	~ 49	~ 133	~ 41	~ 168
10	35 in. lbs	1	7	19			~ 27	~ 104
12	35 in. lbs	1	7	19			~ 19	~ 65
14	35 in. lbs	1	7	19			~ 19	~ 41

~Quantity of strands for Classes G, H, I, K may vary by manufacturer.

Aluminum stranded wire range: #2/0 – #12 AWG

- Hex key required: 3/16"
- Wire strip length – 11/16"
- Panel mountable: 3/8" fastener, torque to 19 ft. lbs. (26 N-m)
- Lock washer and flat washer recommended with mounting bolt



WWW.MARATHONSP.COM
1-419-352-8441

PDS 0367 REV A 6/04/09