

General Specifications

Motor Protection:

Auto Restart/Polarity Protection

Insulation Resistance:

10M Ω or over with a DC500V Megger

Dielectric Withstand Voltage: AC 700V 1s

Allowable Ambient Temperature Range:

N ~ R Class: -10°C ~ +70°C (Operating)

S Class: -10°C ~ +60°C (Operating)

All Class: -40°C ~ +70°C (Storage)
(non-condensing environment)

Expected Life

25°C 80,000 Hours (E00)

Material

Casing : Plastic (Black) UL94V-0

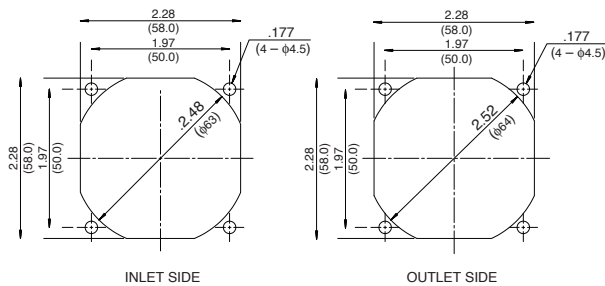
Impeller : Plastic (Black) UL94V-0

Bearing : Ball Bearing

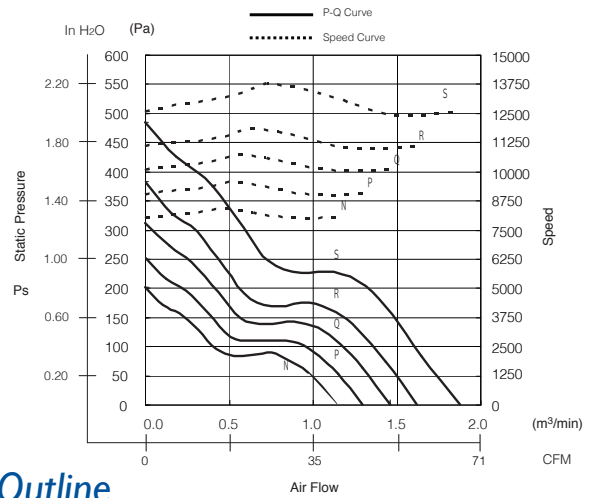
Lead Wire : UL1007, AWG24, +Red, -Black

Panel Cut-Outs

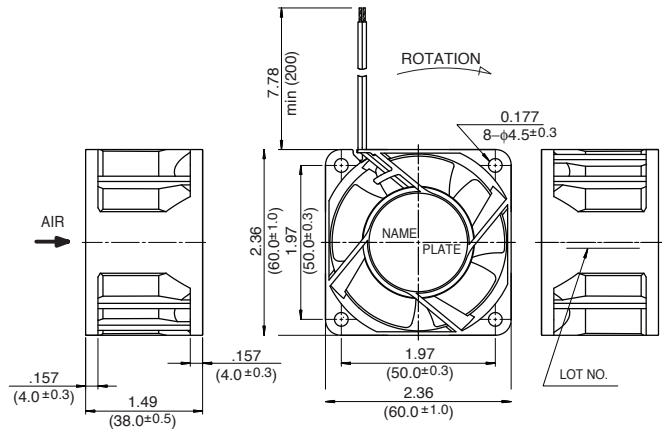
Units: $\frac{\text{inch}}{\text{mm}}$



Characteristic Curves



Outline



Specifications

MODEL	LEGACY P/N	Rated Voltage	Operating Voltage	Current	Input Power	Speed	Max. Air Flow		Max. Static Pressure		Noise	Mass
		(V)	(V)	(A) ^{*1}	(W) ^{*1}	(min ⁻¹) ^{*1}	CFM ^{*1}	(m ³ /min) ^{*1}	in H ₂ O	(Pa) ^{*1}	(dB) ^{*1}	(g)
06038RA-12Q-EA-D0	2415RL-04W-B70-E00	12	7 ~ 13.8	0.77	9.2	10000	53.0	1.50	1.35	310	56.0	125
06038RA-12R-EA-D0	2415RL-04W-B80-E00	12	7 ~ 13.8	1.00	12.0	11000	59.0	1.67	1.65	380	58.0	125
06038RA-12S-EA-D0	2415RL-04W-B90-E00	12	7 ~ 13.2	1.40	16.8	12500	68.1	1.93	2.04	480	61.0	125
06038RA-24N-EA-D0	-	24	15 ~ 26.4	0.27	6.48	8000	41.3	1.17	0.80	200	49.5	125
06038RA-24P-EA-D0	-	24	15 ~ 26.4	0.33	7.92	9000	46.9	1.33	1.00	250	53.0	125
06038RA-24Q-EA-D0	-	24	15 ~ 26.4	0.43	10.32	10000	53.0	1.50	1.24	310	56.0	125
06038RA-24R-EA-D0	-	24	15 ~ 26.4	0.55	13.20	11000	59.0	1.67	1.52	380	58.0	125
06038RA-24S-EA-D0	-	24	15 ~ 26.4	0.77	18.48	12500	68.1	1.93	1.92	480	61.0	125

Rotation: Clockwise

Airflow Outlet: Air Out Over Struts

*1: Average Values in Free Air

Note: For Locked Rotor and Tach Signal contact NMB