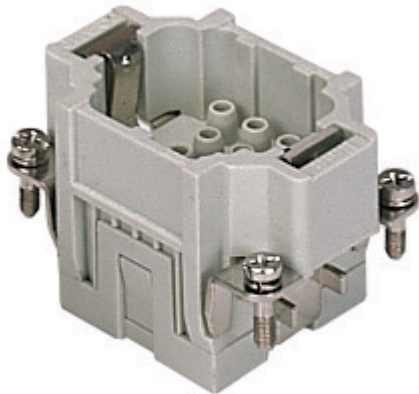


Item code


CQEM 10



Brief description:

male insert, 10 poles + PE, crimp connections, 16A, 500V, 6kV, 3, size "44.27", CLASS insert series

Product description

| | |
|---------------------|--|
| Model | male insert |
| Version | crimp connections |
| Series | CQE |
| Product type | for male contacts 16A |
| Family | CLASS inserts |
| Size | size "44.27" |
| N° of poles | 10 poles +  |

Technical data

| | |
|---|--|
| Current | 16 A (A.C. and D.C.) |
| Voltage | 500 V |
| Sustained impulse voltage | 6kV |
| Pollution degree | 3 |
| Operating temperature range (min, max) | -50°C ... +70°C |
| Plugging cycles | ≥ 200 |
| IP degree of protection | IP20 without enclosure; IP65/IP66/IP67/IP68 with enclosure |
| Wire cross section PE | 0,14 - 4 mm ² ; AWG 20 - 12 |

Other technical details

| | |
|---|--------------------------------|
| Characteristics according to EN61984 | 16A 500V 6kV 3; 16A 830V 8kV 2 |
| Insulation resistance | ≥ 1 GΩ |
| Rated voltage according to UL/CSA | 600V |
| UL 94 flammability rating | V-0 |
| Weight | 41,00 g |

Approvals / Standards

| | |
|---------------------------|---|
| Reference standard | EN 61984 (2001-11) |
| Quality mark |    , EAC |
| Conformity | CQC, CE |

General ordering information

| | |
|----------------------------|-----------------|
| EAN code | 8015747037167 |
| Tariff number | 85369095 |
| Country of origin | Made in EU (IT) |
| ETIM classification | EC000438 |

Packaging Information

| | |
|----------------------------------|----------------------|
| Packaging length | 210,00 mm |
| Packaging height | 130,00 mm |
| Packaging width | 240,00 mm |
| Packaging weight | 2,46 kg |
| Packaging volume | 6,55 dm ³ |
| Packaging description | Carton box |
| Packaging quantity | 60 Pcs |
| Packaging EAN code | 8015747208789 |
| Sub-packaging weight | 0,41 kg |
| Sub-packaging description | Carton |
| Sub-packaging quantity | 10 Pcs |
| Sub-packaging EAN barcode | 8015747037174 |

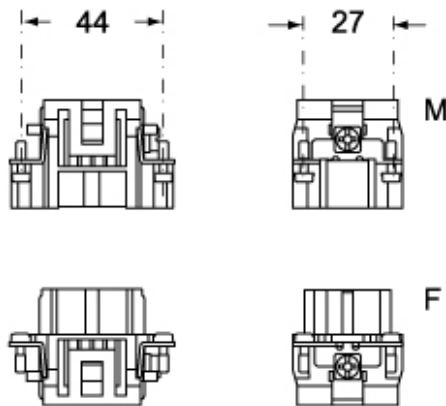
Item code

CQEM 10

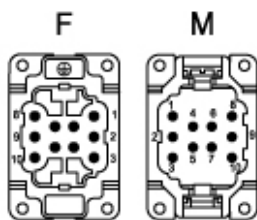


Catalogue drawings

CQEM 10

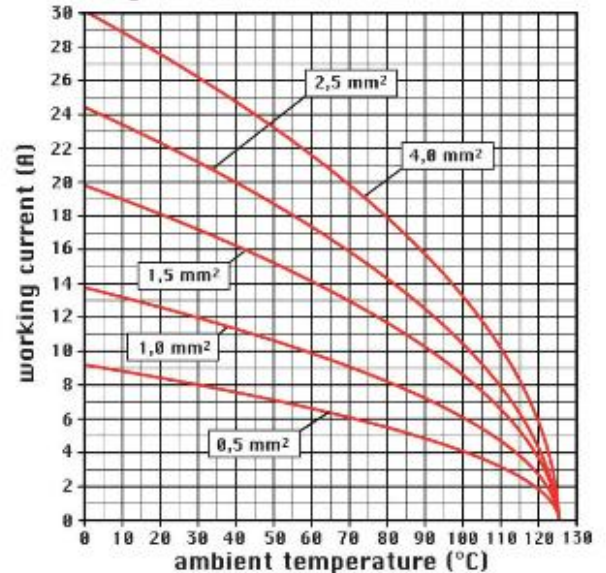


CQEF 10



Catalogue drawings

diagram CQE 10 poles



Notes

CQEF/M 10 inserts:

- characteristics according to EN 61984:
(16A 500V 6kV 3)
(16A 830V) 8kV 2)

- rated voltage according to UL/CSA: 600V
- insulation resistance: > 10 GOhm
- ambient temperature limit: -40 °C ... +125 °C
- are made of self-extinguishing thermoplastic resin UL 94 V0

- mechanical life: > 500 cycles
- contact resistance: < 1 mOhm
- for contact crimping instructions, please see the crimping tool section (16A contacts, CCF, CCM and CC...AN series) .
- enclosures: size "44.27":

C-TYPE IP65/IP66

C7 IP67 stainless steel lever

V-TYPE IP65/IP66

stainless steel lever

T-TYPE IP65 insulating

JEI zinc-plated steel lever

BIG hoods

W-TYPE aggressive environments

EMC

central lever

IP68

panel supports: page:COB