

IEC Appliance Inlet C14 with Filter, Fuseholder 2-pole, Line Switch 2-pole

Standard- or Medical-Filter



Aluminum



Nickel plated steel



Description

- Panel Mount :
Screw-on mounting from front side
- 4 Functions :
Appliance Inlet Protection class I , Line Switch 2-pole , Fuseholder for fuse-links 5 x 20 mm 2-pole , Line filter in standard and medical version
- Quick connect terminals 6.3 x 0.8 mm

Approvals

- Approval Reference Type: FKI
- VDE Certificate Number: 40004665
- UL File Number: E72928

Characteristics

- Compact design with optimal shielding
- All single elements are already wired
- Plug removal necessary for fuse-link replacement
- With EMC-shield
- Suitable for use in equipment according to IEC/UL 60950
- Suitable for use in medical equipment according to IEC/UL 60601-1

Other versions on request

- Medical version M80

Weblinks

[pdf datasheet](#), [html-datasheet](#), [General Product Information](#), [RoHS](#), [CHINA-RoHS](#), [REACH](#), [Distributor-Stock-Check](#), [Accessories](#), [Detailed request for product](#)

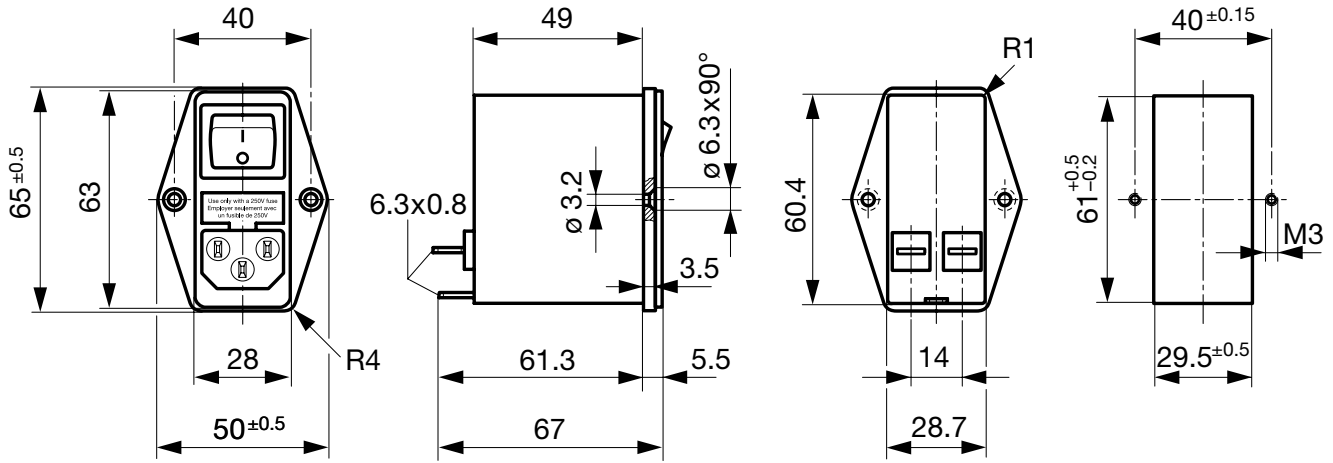
Technical Data

| | | | |
|---------------------------------|---|-----------------------------------|--|
| Ratings IEC | 1 - 10A @ Ta 40 °C / 250VAC; 50Hz | appliance inlet/-outlet | C14 acc. to IEC 60320-1, UL 498, CSA C22.2 no. 42 (for cold conditions) pin-temperature 70 °C, 10A, Protection Class I |
| Ratings UL/CSA | 1 - 10A @ Ta 40 °C / 125VAC; 60Hz | Fuseholder | 2-pole, Shocksafe category PC2 acc. to IEC 60127-6, for fuse-links 5 x 20mm |
| Leakage Current | standard < 0.25 mA (250V / 60Hz) medical < 5 µA (250 V / 60 Hz) | Rated Power Acceptance @ Ta 23 °C | 5 x 20: 1.6W (2-pole) |
| Dielectric Strength | > 1.7 kVDC between L-N > 2.7 kVDC between L/N-PE Test voltage (2 sec) | Power Acceptance @ Ta > 23°C | Admissible power acceptance at higher ambient temperature see derating curves |
| Allowable Operation Temperature | -25 °C to 85 °C | Line Switch | 2-pole, non-illuminated, acc. to IEC 61058-1 Technical Details |
| Climatic Category | 25/085/21 acc. to IEC 60068-1 | Line Filter | Standard and Medical Version, IEC 60939, UL 1283, CSA C22.2 no. 8 Technical Details |
| IP-Protection | from front side IP 40 acc. to IEC 60529 | MTBF | > 1'700'000h acc. to MIL-HB-217 F |
| Protection Class | Suitable for appliances with protection class I acc. to IEC 61140 | | |
| Terminal | Quick connect terminals 6.3 x 0.8 mm | | |
| Panel Thickness s | Screw: max 8 mm Mounting screw torque max 0.5Nm | | |
| Material: Housing | Thermoplastic, black, UL 94V-0 | | |

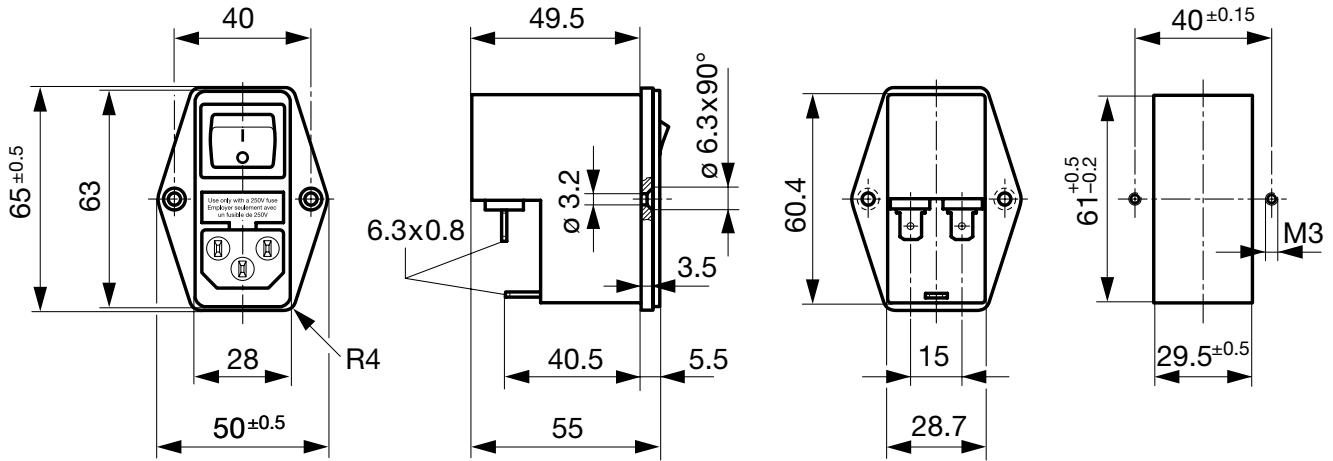
Detailed information on product approvals, code requirements, usage instructions and detailed test conditions can be looked up in [General Product Information](#)

Dimension

Case 45



Case 50

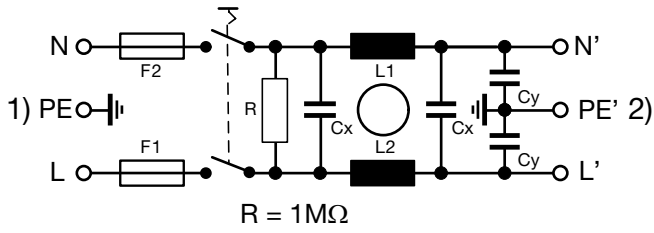


Technical Data of Filter-Components

| Rated Current [A] | Filter-Type | Inductances L [mH] | Capacitance CX [nF] | Capacitance CY [nF] | R [MΩ] |
|-------------------|----------------------|--------------------|---------------------|---------------------|--------|
| 1 | Standard Version | 2 x 10 | 68 | 2.2 | 1 |
| 2 | Standard Version | 2 x 4 | 68 | 2.2 | 1 |
| 4 | Standard Version | 2 x 1.5 | 68 | 2.2 | 1 |
| 6 | Standard Version | 2 x 0.8 | 68 | 2.2 | 1 |
| 10 | Standard Version | 2 x 0.3 | 68 | 2.2 | 1 |
| 1 | Medical Version (M5) | 2 x 10 | 68 | - | 1 |
| 2 | Medical Version (M5) | 2 x 4 | 68 | - | 1 |
| 4 | Medical Version (M5) | 2 x 1.5 | 68 | - | 1 |
| 6 | Medical Version (M5) | 2 x 0.8 | 68 | - | 1 |
| 10 | Medical Version (M5) | 2 x 0.3 | 68 | - | 1 |

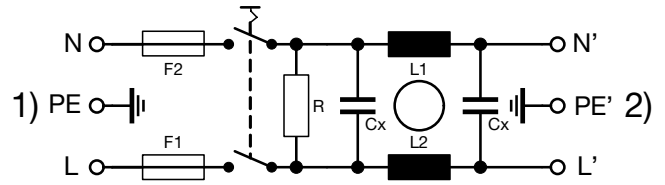
Diagrams

Standard version



- 1) Line
- 2) only FKI
- 3) Load

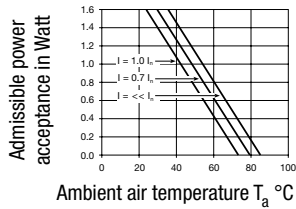
Medical version (M5)



- 1) Line
- 2) only FKI
- 3) Load

Derating Curves

2-pole

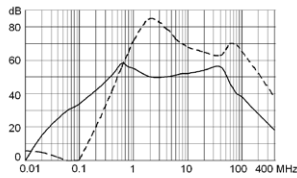


Attenuation Loss

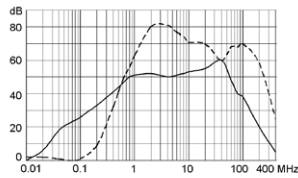
Standard version

----- 50Ω differential mode _____ 50Ω common mode

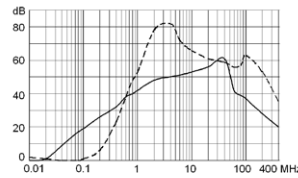
1 A



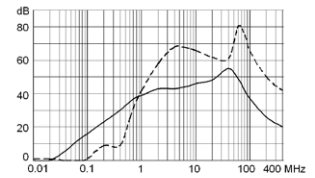
2 A



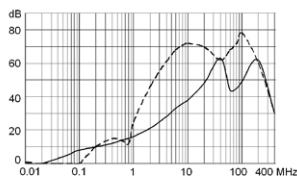
4 A



6 A

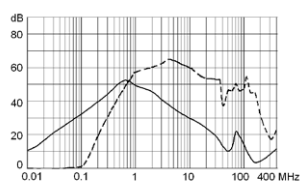


10 A

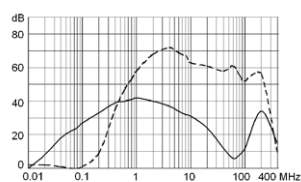


Medical version (M5)

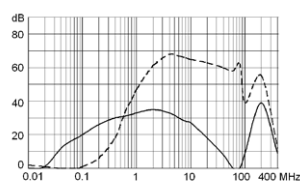
1 A



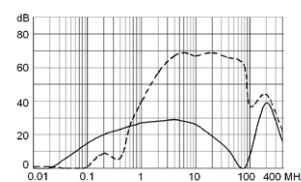
2 A



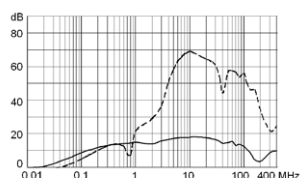
4 A



6 A



10 A



All Variants

| Type | Rated Current [A] | Filter-Type | Fuseholder | Line Switch | Housings | Material: Housing | Order Number |
|------|-------------------|----------------------|------------|-------------|----------|---------------------|--------------|
| FKI | 1 | Standard Version | 2-pole | 2-pole | 45 | Aluminum | 4304.4061 |
| FKI | 2 | Standard Version | 2-pole | 2-pole | 45 | Aluminum | 4304.4062 |
| FKI | 4 | Standard Version | 2-pole | 2-pole | 45 | Aluminum | 4304.4063 |
| FKI | 6 | Standard Version | 2-pole | 2-pole | 45 | Aluminum | 4304.4064 |
| FKI | 10 | Standard Version | 2-pole | 2-pole | 45 | Aluminum | 4304.4065 |
| FKI | 1 | Medical Version (M5) | 2-pole | 2-pole | 45 | Aluminum | 4304.4091 |
| FKI | 2 | Medical Version (M5) | 2-pole | 2-pole | 45 | Aluminum | 4304.4092 |
| FKI | 4 | Medical Version (M5) | 2-pole | 2-pole | 45 | Aluminum | 4304.4093 |
| FKI | 6 | Medical Version (M5) | 2-pole | 2-pole | 45 | Aluminum | 4304.4094 |
| FKI | 10 | Medical Version (M5) | 2-pole | 2-pole | 45 | Aluminum | 4304.4095 |
| FKI | 1 | Standard Version | 2-pole | 2-pole | 50 | Nickel plated steel | 4304.4021 |
| FKI | 2 | Standard Version | 2-pole | 2-pole | 50 | Nickel plated steel | 4304.4022 |
| FKI | 4 | Standard Version | 2-pole | 2-pole | 50 | Nickel plated steel | 4304.4023 |
| FKI | 6 | Standard Version | 2-pole | 2-pole | 50 | Nickel plated steel | 4304.4024 |
| FKI | 10 | Standard Version | 2-pole | 2-pole | 50 | Nickel plated steel | 4304.4025 |
| FKI | 1 | Medical Version (M5) | 2-pole | 2-pole | 50 | Nickel plated steel | 4304.4066 |
| FKI | 2 | Medical Version (M5) | 2-pole | 2-pole | 50 | Nickel plated steel | 4304.4067 |
| FKI | 4 | Medical Version (M5) | 2-pole | 2-pole | 50 | Nickel plated steel | 4304.4068 |
| FKI | 6 | Medical Version (M5) | 2-pole | 2-pole | 50 | Nickel plated steel | 4304.4069 |
| FKI | 10 | Medical Version (M5) | 2-pole | 2-pole | 50 | Nickel plated steel | 4304.4070 |

Most Popular.

Availability for all products can be searched real-time: <http://www.schurter.com/en/Stock-Check/Stock-Check-SCHURTER>

Packaging unit

10 Pcs

Accessories

Description



Assorted Covers
Rear Cover

0859.0074

Mating Outlets/Connectors

Category / Description

[Appliance Outlet Overview complete](#)



| | |
|---|------|
| IEC Appliance Outlet F, Screw-on Mounting, Front Side, Solder Terminal | 4787 |
| IEC Appliance Outlet F, Snap-in Mounting, Front Side, Solder or Quick-connect Terminal | 4788 |
| IEC Appliance Outlet F or H, Screw-on Mounting, Front Side, Solder, PCB or Quick-connect Terminal | 5091 |

[Appliance Outlet further types to FKI](#)

[Connector Overview complete](#)



| | |
|--|---------|
| 4782 Mounting: Power Cord, 3 x 1 mm ² / 3 x 18 AWG, Cable, Connector: IEC C13 | 4782 |
| 4022 Mounting: Power Supply Cord, 3 x 1.5 mm ² , Screw clamps, Connector: IEC C13 | 4022 |
| 4785 Mounting: Power Cord, 3 x 1 mm ² / 3 x 18 AWG, Cable, Connector: IEC C13 | 4785 |
| 4300-06 Mounting: Power Cord, 3 x 1 mm ² / 3 x 18 AWG, Cable, Connector: IEC C13 | 4300-06 |
| 4012 Mounting: Power Supply Cord, 3 x 1.5 mm ² , Screw clamps, Connector: IEC C13 | 4012 |

[Connector further types to FKI](#)

...