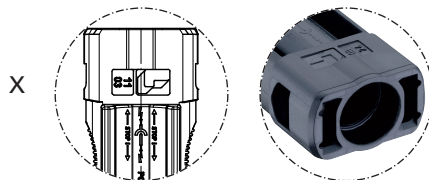
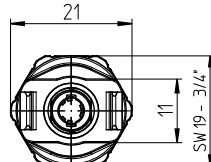
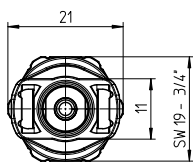
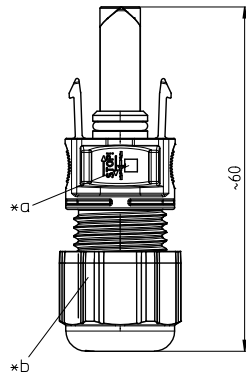
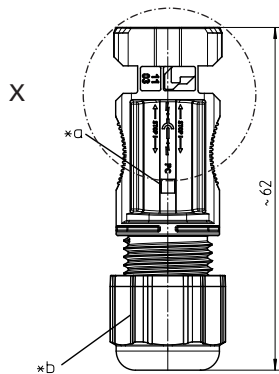




**LC4-CP 30**



**LC4-CP 31**



**LC4-CP 30 IT**

\*a marking + on LC4-CP 3...-1, - on LC4-CP 3...-2  
\*b hexagonal cap nut

**Standard packaging: pre-assembled, contacts in bulk, sorted in plastic bags of 50 pieces, in a cardboard box**

**LC4-CP 30**  
**LC4-CP 31**

LC4® photovoltaic connector, field-attachable, with integrated locking and crimp contact

LC4-CP 30: plug  
LC4-CP 31: socket

**1. Temperature range** -40 °C/+85 °C (IEC)  
-40 °C/+90 °C (UL)  
(+115 °C upper limit temperature)

**2. Materials** halogen-free, UV-resistant  
Insulating body m-PC, V1 according to UL 94  
Contact pin/bush CuNiSi, tin-plated  
Sealing (sockets only) silicone  
Cap nut PA GF, V0 according to UL 94

**3. Mechanical data**  
Insertion force<sup>1</sup> ≤ 20 N  
Withdrawal force<sup>1</sup> ≥ 10 N  
Retaining force of locking latches<sup>2</sup> ≥ 90 N  
Mating cycles<sup>2</sup> 50  
Tightening torque cap nut 1,4 ± 0,2 Nm  
Mating with photovoltaic connectors LC4  
Protection degree<sup>3</sup> IP 68

**Connectable conductors crimp terminal**  
Photovoltaic cable, double-insulated<sup>4</sup>  
Section LC4-CP 3... 2.5 2.5 mm<sup>2</sup> (AWG 14)  
Section LC4-CP 3... 4.0 4.0 mm<sup>2</sup> (AWG 12)  
Section LC4-CP 3... 6.0 6.0 mm<sup>2</sup> (AWG 10)  
Cable diameter 5.3-8.5 mm  
5.5-7.8 mm (TÜV)  
6.3-7.8 mm (UL)

Examples of recommended cables on the Internet site [www.lumberg.com](http://www.lumberg.com)

**4. Elektrische Daten** (at T<sub>amb</sub> 20 °C)

Contact resistance<sup>2</sup> ≤ 1 mΩ  
Rated current (IEC)<sup>2</sup>  
LC4-CP 3... 2.5 22 A at T<sub>amb</sub> 85 °C  
LC4-CP 3... 4.0 and 6.0 30 A at T<sub>amb</sub> 85 °C  
Rated current (UL)<sup>2</sup> 35 A at T<sub>amb</sub> 20 °C, all sections  
Rated voltage<sup>5</sup> 1000 V DC (IEC)/600 V DC (UL)  
Overvoltage category<sup>5</sup> III (8 kV)  
Material group<sup>5</sup> IIIa (IEC)/3 (UL) (CTI > 225)  
Creepage distance/Clearance between  
contact and touchable surfaces 24.6 mm  
contact and cable outlet 22.8 mm  
Isolationswiderstand > 10 GΩ

<sup>1</sup> measured with a polished steel gauge, nominal thickness 4.0 mm  
<sup>2</sup> measured with a proper counterpart  
<sup>3</sup> according to IEC 60529/DIN EN 60529  
only in mated condition with a proper counterpart  
<sup>4</sup> IP X8 requirements under agreement between manufacturer and user  
wire construction preferably according to IEC 60228 class 5, for more  
details see separate data sheet on request  
<sup>5</sup> according to DIN EN 60664/IEC 60664 resp. according to ANSI/UL 746A



**Composition of type designation**

