

CR1616

LITHIUM MANGANESE DIOXIDE



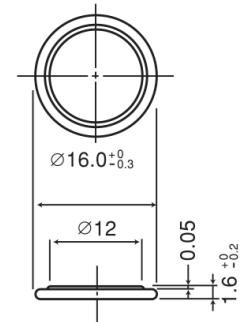
Features & Benefits

- Good pulse capability
- High discharge characteristics
- Stable voltage level during discharge
- Long-term reliability

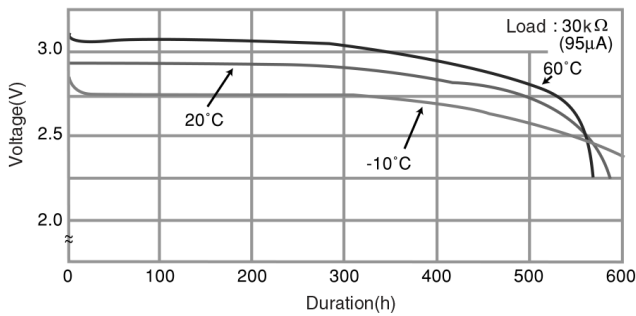
Specifications

Nominal Capacity:	55 mAh
Nominal Voltage:	3V
Weight:	1.2g
Operating Temperature:	-30°C - +60°C

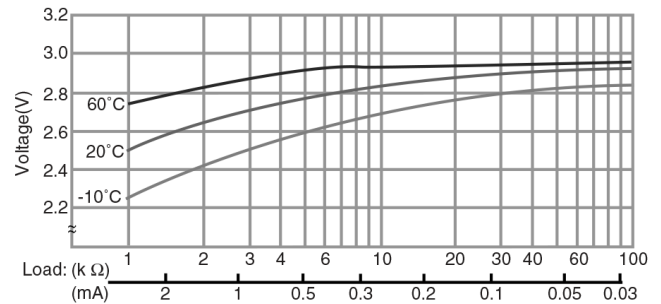
Dimensions



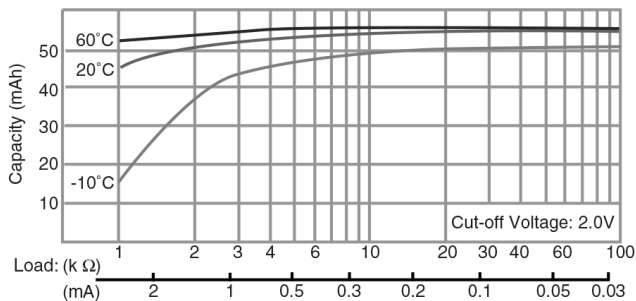
Temperature Characteristics



Operating Voltage vs. Load Resistance (voltage at 50% discharge depth)



Capacity vs. Load Resistance



⚠ WARNING

Serious harm in as little as 2-hours if swallowed. **KEEP AWAY FROM CHILDREN.** Seek immediate medical help if swallowed. Have the doctor call the poison center at 1-(800) 222 1222.

Product manufacturers should design their products to meet the safety requirements of Annex I of UL60065 or equivalent standards.