

## 120 VAC 18x16x8 Inch Weatherproof Enclosure with Mounting Plate, Cooling Fans, Heaters & Solid State Dual Point Temperature Controller - Model: NB181608-1HFS

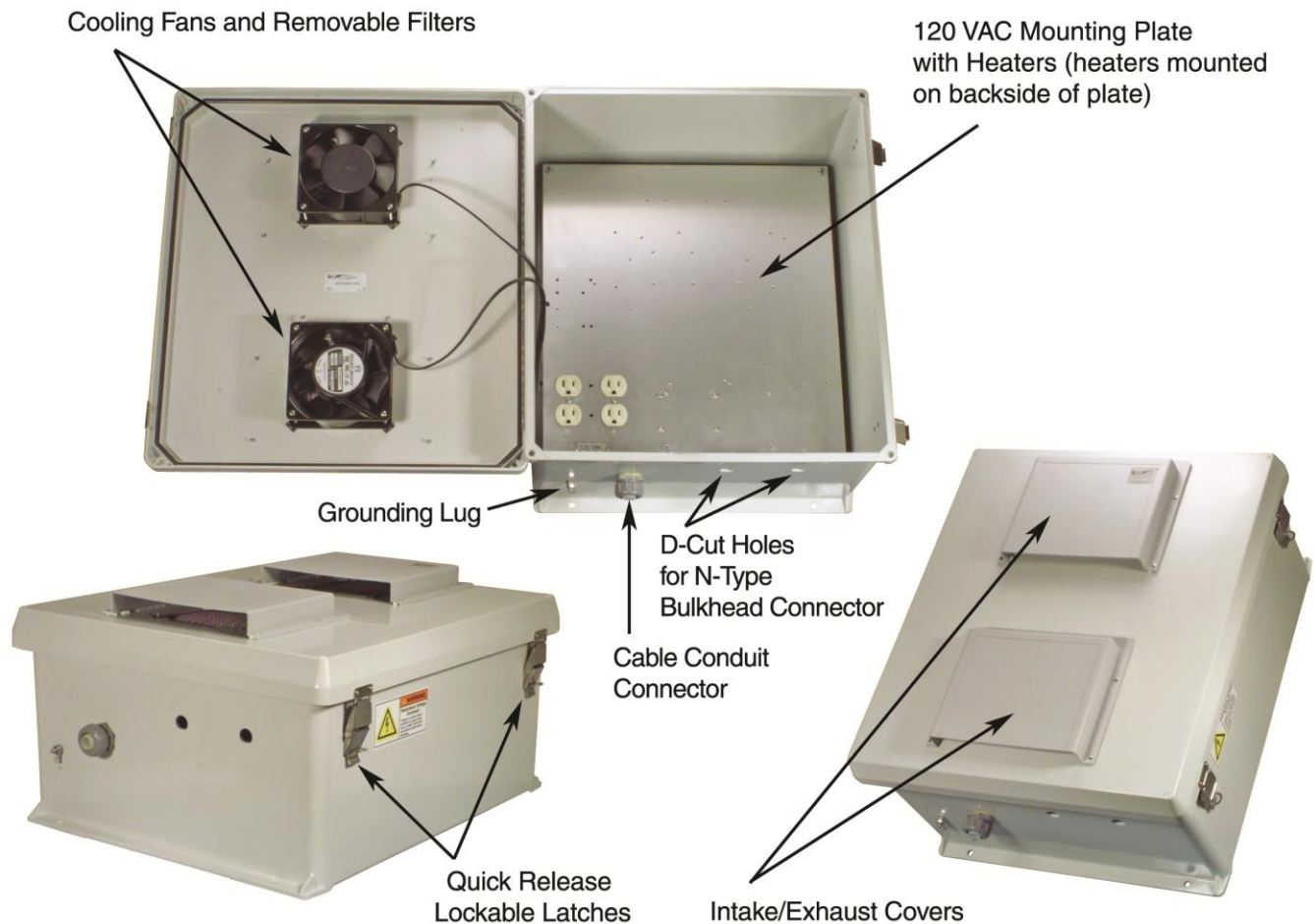
### Applications and Features

**Features:**

- Molded Fiberglass Reinforced Polyester (FRP) industrial Enclosure
- Stainless steel quick release latches with padlock hasps
- NEMA Type 3R, 3RX / IP24 rated
- Fully gasketed raised Vented lid with removable filters & integral mounting flange
- Features aluminum mounting plate with surge protected duplex 120 VAC Outlets & Thermostat Controlled Heating & Cooling System

**Applications:**

- Remote Wireless LAN WiFi equipment installations
- Indoor and outdoor installations
- Hot and Cold temperature environments
- Corrosive environments & hotspot applications
- Protection of equipment from theft or damage



## Product Description

### Start with the Box...

The box is a rugged 18" x 16" x 8" weatherproof enclosure that is ideal for both indoor and outdoor applications. Constructed from molded fiberglass, it is well suited for high temperature or corrosive environments. The mounting flange allows it to be wall mounted as well as on a flat surface. The box can also be pole mounted with the optional pole mounting hardware kit. The fully gasketed lid features a stainless steel continuous hinge and stainless steel quick release latches with padlock hasps. The enclosure material is UV stabilized and comes in machine tool gray. The enclosure also features holes for mounting Lightning Protectors or Connectors, a grounding lug and ½" cable conduit connector.



Due to the large size of this enclosure, it can accommodate dual sets of most access points. The example to the right shows one of the many ways the enclosure can be configured.

### Mounting Plate

The aluminum mounting plate has provisions to mount WLAN equipment from Cisco®, Symbol®, D-Link®, HyperLink and more. With the optional HGX-AMOUNT02 bracket a wide array of HyperLink Amplifiers, Power-Over-Ethernet products and Power Supplies can be mounted as well. Two of these brackets can be mounted side by side. Also available is the HGX-NMOUNT03 Universal Mounting Shelf that can be attached to the mounting plate and can accommodate additional equipment to be placed in the enclosure. The plate features four standard surge protected 120 VAC outlets and a terminal strip to supply power to internal equipment.



### Hot and Cold Environments

To help ensure trouble-free operation of electronic equipment, proper operating temperatures inside an enclosure needs to be maintained. With the built-in Heater and Cooling system, internal temperatures can be better maintained. This model is ideal in Hot and Cold environments.

The NB181608-1HFS comes with two 120 VAC 200 watt heating elements and two 120 VAC cooling fans. The fans and heaters are controlled by HyperLink's exclusive solid-state temperature controller. The standard unit has a fan turn-on temperature of +93° F (+33.8° C) and a heat turn-on temperature of +16° F (-8.8° C). The controller features improved temperature setpoint accuracy and can be factory modified for other temperature setpoints. The heater and fan are controlled by two integral high current solid-state AC relays. The relays feature Zero Cross Detection for EMI reduction. No extra room for the controller is required since it is mounted underneath the plate.

### Lightning Protection

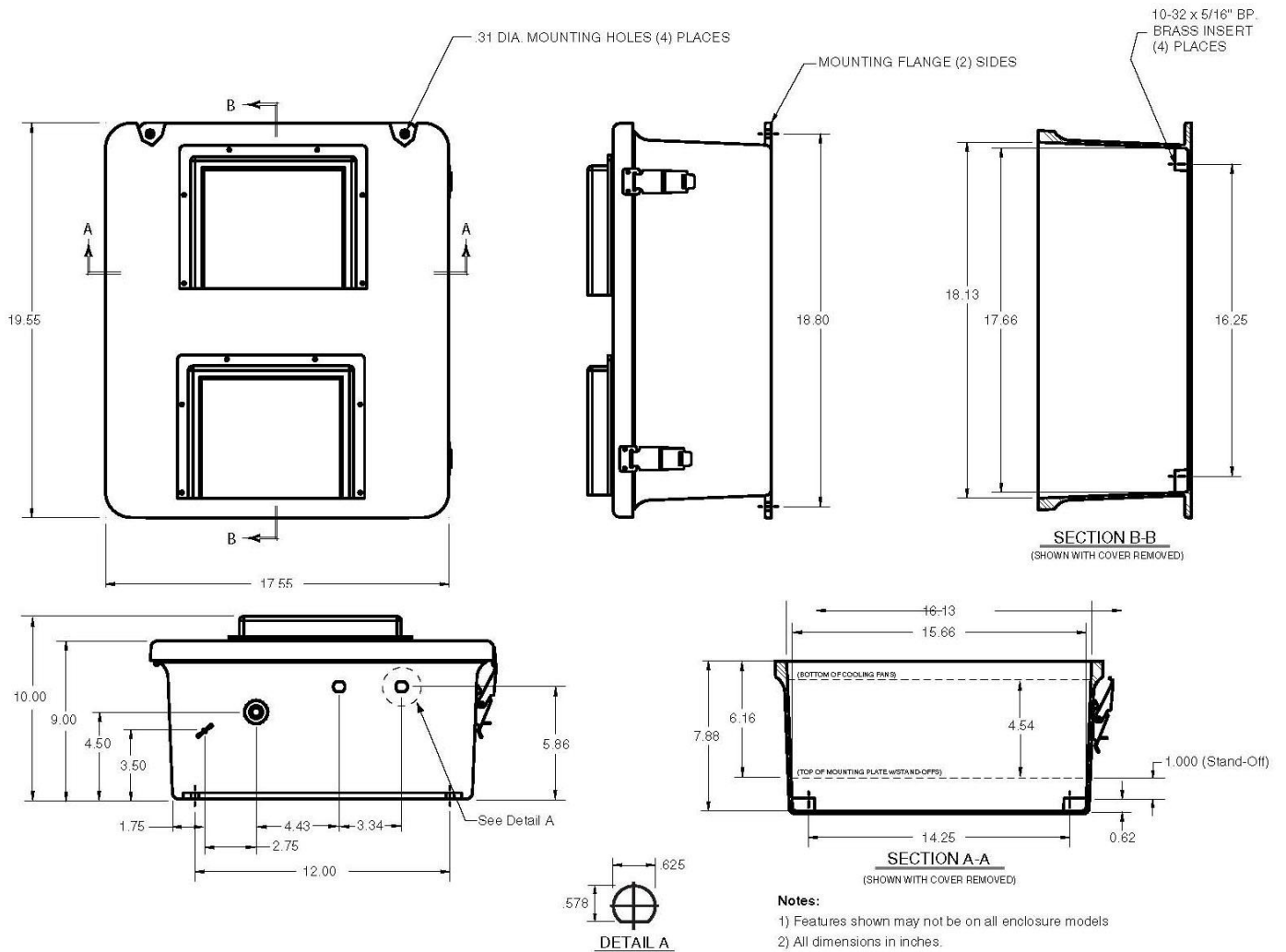
Surge protection is provided as a standard feature on the internal AC outlets. In addition, the unit can accept up to two optional bulkhead-mount N-Type lightning protectors to protect the coaxial cable runs. Mounted to the optional HGX-AMOUNT02 bracket, the HGLN-CAT5 lightning protector can be used with Power-over-Ethernet applications.

## Specifications

<b>Enclosure Material</b>	Fiberglass Reinforced Polyester
<b>Enclosure Color</b>	Machine Tool Gray
<b>Voltage</b>	120 VAC
<b>Heater Power</b>	200 Watts each (400 Watts total)
<b>Fan Power</b>	12 Watts each (24 Watts total)
<b>Mounting Plate Material</b>	.10 in. (2.5mm) Thick Anodized Aluminum
<b>Mounting Plate Dimensions</b>	16.8 x 14.8 inches (42.6 x 37.5 cm)
<b>Weight</b>	21.8 lbs (9.9 kg)
<b>Outside Dimensions (max)</b>	19.5 x 17.5 x 10 inches (49.5 x 44.4 x 25.4 cm)
<b>Inside Dimensions</b>	17.7 x 15.7 x 8.5 inches (44.9 x 39.9 x 21.6 cm)
<b>Flame Rating</b>	UL 94-5V
<b>RoHS Compliant</b>	Yes
<b>Cable Feed</b>	1/2" Cable Conduit Connector
<b>Ratings</b>	NEMA Type 3R, 3RX / IP24

<b>Temperature Controller Specification</b>	
<b>Fan Setpoint Temperature</b>	+34° C (+93° F)
<b>Heater Setpoint Temperature</b>	-9° C (+16° F)
<b>Hysteresis Window</b>	5° C (9° F)
Contact us for custom Fan/Heat Setpoints	

**Enclosure Dimensions**



**Mounting Plate Details**

