

## Base strip - MCVU 1,5/ 6-GFD-3,81 - 1833069

Please be informed that the data shown in this PDF Document is generated from our Online Catalog. Please find the complete data in the user's documentation. Our General Terms of Use for Downloads are valid (<http://phoenixcontact.com/download>)



Plug component, nominal current: 8 A, rated voltage (III/2): 160 V, number of positions: 6, pitch: 3.81 mm, connection method: Screw connection with tension sleeve, Color: green, contact surface: Tin, mounting: Direct mounting

The figure shows a 10-position version of the product

### Why buy this product

- Screwable flange for superior mechanical stability
- Laterally mounted flange for screw connection in the housing or on the mounting plate
- Maximum flexibility when it comes to device design – one header for connectors with different connection technologies



### Key Commercial Data

|                                      |   |
|--------------------------------------|---|
| Packing unit                         | 50 STK  |
| GTIN                                 | <br>4 017918 051754 |
| GTIN                                 | 4017918051754   |
| Weight per Piece (excluding packing) | 6.960 g   |
| Custom tariff number                 | 85366990  |
| Country of origin                    | Poland  |

### Technical data

#### Dimensions

|              |          |
|--------------|----------|
| Length [ l ] | 20.3 mm  |
| Width [ w ]  | 33.25 mm |
| Height [ h ] | 12.5 mm  |
| Pitch        | 3.81 mm  |
| Dimension a  | 19.05 mm |

#### General

|                   |                  |
|-------------------|------------------|
| Range of articles | MCVU 1,5/...-GFD |
| Type of contact   | Male connector   |

## Base strip - MCVU 1,5/ 6-GFD-3,81 - 1833069

### Technical data

#### General

|  |                                      |
|--|--------------------------------------|
| Number of positions                    | 6                                    |
| Connection method                      | Screw connection with tension sleeve |
| Insulating material group              | I                                    |
| Rated surge voltage (III/3)            | 2.5 kV                               |
| Rated surge voltage (III/2)            | 2.5 kV                               |
| Rated surge voltage (II/2)             | 2.5 kV                               |
| Rated voltage (III/3)                  | 160 V                                |
| Rated voltage (III/2)                  | 160 V                                |
| Rated voltage (II/2)                   | 320 V                                |
| Connection in acc. with standard       | EN-VDE                               |
| Nominal current $I_N$                  | 8 A                                  |
| Nominal cross section                  | 1.5 mm <sup>2</sup>                  |
| Maximum load current                   | 8 A                                  |
| Insulating material                    | PA                                   |
| Flammability rating according to UL 94 | V0                                   |
| Internal cylindrical gage              | A1                                   |
| Stripping length                       | 7 mm                                 |
| Screw thread                           | M2                                   |
| Tightening torque, min                 | 0.22 Nm                              |
| Tightening torque max                  | 0.25 Nm                              |

#### Connection data

|   |                      |
|---|----------------------|
| Conductor cross section solid min.  | 0.14 mm <sup>2</sup> |
| Conductor cross section solid max.  | 1.5 mm <sup>2</sup>  |
| Conductor cross section flexible min.   | 0.14 mm <sup>2</sup> |
| Conductor cross section flexible max.   | 1.5 mm <sup>2</sup>  |
| Conductor cross section flexible, with ferrule without plastic sleeve min.              | 0.25 mm <sup>2</sup> |
| Conductor cross section flexible, with ferrule without plastic sleeve max.              | 1.5 mm <sup>2</sup>  |
| Conductor cross section flexible, with ferrule with plastic sleeve min.                 | 0.25 mm <sup>2</sup> |
| Conductor cross section flexible, with ferrule with plastic sleeve max.                 | 0.5 mm <sup>2</sup>  |
| Conductor cross section AWG min.  | 28                   |
| Conductor cross section AWG max.  | 16                   |
| 2 conductors with same cross section, solid min.  | 0.14 mm <sup>2</sup> |
| 2 conductors with same cross section, solid max.  | 0.5 mm <sup>2</sup>  |
| 2 conductors with same cross section, stranded min.                                     | 0.14 mm <sup>2</sup> |
| 2 conductors with same cross section, stranded max.                                     | 0.75 mm <sup>2</sup> |
| 2 conductors with same cross section, stranded, ferrules without plastic sleeve, min.   | 0.25 mm <sup>2</sup> |
| 2 conductors with same cross section, stranded, ferrules without plastic sleeve, max.   | 0.34 mm <sup>2</sup> |
| 2 conductors with same cross section, stranded, TWIN ferrules with plastic sleeve, min. | 0.5 mm <sup>2</sup>  |

# Base strip - MCVU 1,5/ 6-GFD-3,81 - 1833069

## Technical data

### Connection data

|   |                     |
|---|---------------------|
| 2 conductors with same cross section, stranded, TWIN ferrules with plastic sleeve, max. | 0.5 mm <sup>2</sup> |
| Minimum AWG according to UL/CUL   | 30                  |
| Maximum AWG according to UL/CUL   | 14                  |

### Standards and Regulations

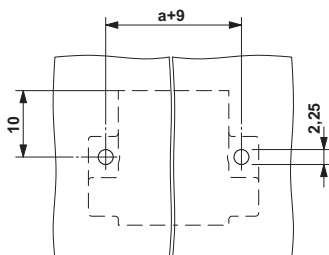
|  |        |
|--|--------|
| Connection in acc. with standard       | EN-VDE |
|  | CSA    |
| Flammability rating according to UL 94 | V0     |

### Environmental Product Compliance

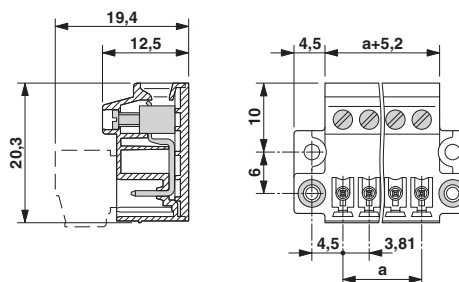
|            |   |
|------------|---|
| China RoHS | Environmentally Friendly Use Period = 50  |
|            | For details about hazardous substances go to tab "Downloads", Category "Manufacturer's declaration" |

## Drawings

Drilling diagram



Dimensional drawing



## Classifications

### eCl@ss

|            |          |
|------------|----------|
| eCl@ss 4.0 | 272607xx |
| eCl@ss 4.1 | 27260701 |
| eCl@ss 5.0 | 27260701 |
| eCl@ss 5.1 | 27260701 |
| eCl@ss 6.0 | 27260704 |
| eCl@ss 7.0 | 27440402 |
| eCl@ss 8.0 | 27141106 |
| eCl@ss 9.0 | 27141106 |

### ETIM

|          |          |
|----------|----------|
| ETIM 3.0 | EC001121 |
| ETIM 4.0 | EC002638 |
| ETIM 5.0 | EC001284 |
| ETIM 6.0 | EC001284 |

# Base strip - MCVU 1,5/ 6-GFD-3,81 - 1833069

## Classifications

### UNSPSC

|               |          |
|---------------|----------|
| UNSPSC 6.01   | 30211810 |
| UNSPSC 7.0901 | 39121409 |
| UNSPSC 11     | 39121409 |
| UNSPSC 12.01  | 39121409 |
| UNSPSC 13.2   | 39121409 |

## Approvals

### Approvals


#### Approvals


CSA / VDE Gutachten mit Fertigungsüberwachung / IECCEB Scheme / CCA / cULus Recognized / EAC

#### Ex Approvals

### Approval details

|                            |   |   |       |
|----------------------------|---|---|-------|
| CSA                        |  | <a href="http://www.csagroup.org/services/testing-and-certification/certified-product-listing/">http://www.csagroup.org/services/testing-and-certification/certified-product-listing/</a> | 13631 |
|                            |   | B   | D     |
| mm <sup>2</sup> /AWG/kcmil |   | 28-16   | 28-16 |
| Nominal current IN         |   | 8 A   | 8 A   |
| Nominal voltage UN         |   | 300 V   | 300 V |

|   |   |   |          |
|---|---|---|----------|
| VDE Gutachten mit Fertigungsüberwachung |  | <a href="http://www.vde.com/en/Institute/OnlineService/VDE-approved-products/Pages/Online-Search.aspx">http://www.vde.com/en/Institute/OnlineService/VDE-approved-products/Pages/Online-Search.aspx</a> | 40011723 |
|   |   | 0.2-1.5   |          |
| mm <sup>2</sup> /AWG/kcmil              |   | 0.2-1.5   |          |
| Nominal current IN                      |   | 8 A   |          |
| Nominal voltage UN                      |   | 160 V   |          |

|                            |   |   |                |
|----------------------------|---|---|----------------|
| IECEE CB Scheme            |  | <a href="http://www.iecee.org/">http://www.iecee.org/</a> | DE1-58415-B1B2 |
|                            |   | 0.2-1.5   |                |
| mm <sup>2</sup> /AWG/kcmil |   | 0.2-1.5   |                |
| Nominal current IN         |   | 8 A   |                |
| Nominal voltage UN         |   | 160 V   |                |

# Base strip - MCVU 1,5/ 6-GFD-3,81 - 1833069

## Approvals

|                                |                |
|--------------------------------|----------------|
| CCA                            | CCA/ DE1 34219 |
| mm <sup>2</sup> /AWG/kcmil     | 0.2-1.5        |
| Nominal current I <sub>N</sub> | 8 A            |
| Nominal voltage U <sub>N</sub> | 160 V          |

|                                |       |   |                 |
|--------------------------------|-------|---|-----------------|
| cULus Recognized               |       | <a href="http://database.ul.com/cgi-bin/XYV/template/LISEXT/1FRAME/index.htm">http://database.ul.com/cgi-bin/XYV/template/LISEXT/1FRAME/index.htm</a> | E60425-20110128 |
|                                | B     | D   |                 |
| mm <sup>2</sup> /AWG/kcmil     | 30-14 | 30-14   |                 |
| Nominal current I <sub>N</sub> | 8 A   | 8 A   |                 |
| Nominal voltage U <sub>N</sub> | 300 V | 300 V   |                 |

|     |  |         |
|-----|--|---------|
| EAC |  | B.01742 |
|-----|--|---------|

## Accessories

### Accessories

#### Coding element

Coding profile - CP-MSTB - 1734634

Coding profile, is inserted into the slot on the plug or inverted header, red insulating material



#### Labeled terminal marker

Marker card - SK 3,81/2,8:FORTL.ZAHLEN - 0804109



Marker card, Card, white, labeled, Horizontal: Consecutive numbers 1 - 10, 11 - 20, etc. up to 91 - (99)100, Mounting type: adhesive, for terminal block width: 3.81 mm, Lettering field: 3.81 x 2.8 mm

#### Screwdriver tools

## Base strip - MCVU 1,5/ 6-GFD-3,81 - 1833069

### Accessories

Screwdriver - SZS 0,4X2,5 VDE - 1205037



Screwdriver, slot-headed, VDE insulated, size: 0.4 x 2.5 x 80 mm, 2-component grip, with non-slip grip

---

### Additional products

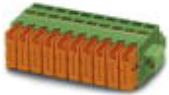
Printed-circuit board connector - MCVR 1,5/ 6-STF-3,81 - 1828388



Plug component, nominal current: 8 A, rated voltage (III/2): 160 V, number of positions: 6, pitch: 3.81 mm, connection method: Screw connection with tension sleeve, Color: green, contact surface: Tin

---

Printed-circuit board connector - QC 0,5/ 6-STF-3,81 - 1897584



Plug component, nominal current: 6 A, rated voltage (III/2): 200 V, number of positions: 6, pitch: 3.81 mm, connection method: Displacement connection, Color: green, contact surface: Tin

---

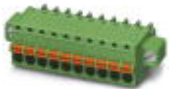
Printed-circuit board connector - MCC 1/ 6-STZF-3,81 - 1852406



Plug component, nominal current: 8 A, rated voltage (III/2): 160 V, number of positions: 6, pitch: 3.81 mm, connection method: Crimp connection, Color: green, Corresponding female crimp contacts with current [A] and conductor cross section range [mm<sup>2</sup>] data: 5A/MCC-MT 0,2-0,35 (1859988); 8A/MCC-MT 0,5-1,0 (1859991)

---

Printed-circuit board connector - FK-MCP 1,5/ 6-STF-3,81 - 1851274



Plug component, nominal current: 8 A, rated voltage (III/2): 160 V, number of positions: 6, pitch: 3.81 mm, connection method: Push-in spring connection, Color: green, contact surface: Tin

---

## Base strip - MCVU 1,5/ 6-GFD-3,81 - 1833069

### Accessories

Printed-circuit board connector - FRONT-MC 1,5/ 6-STF-3,81 - 1850893



Plug component, nominal current: 8 A, rated voltage (III/2): 160 V, number of positions: 6, pitch: 3.81 mm, connection method: Front screw connection, Color: green, contact surface: Tin

Printed-circuit board connector - MC 1,5/ 6-STF-3,81 - 1827745



Plug component, nominal current: 8 A, rated voltage (III/2): 160 V, number of positions: 6, pitch: 3.81 mm, connection method: Screw connection with tension sleeve, Color: green, contact surface: Tin

Printed-circuit board connector - MCVW 1,5/ 6-STF-3,81 - 1828537



Plug component, nominal current: 8 A, rated voltage (III/2): 160 V, number of positions: 6, pitch: 3.81 mm, connection method: Screw connection with tension sleeve, Color: green, contact surface: Tin