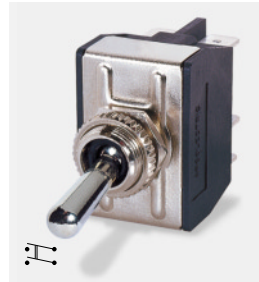




C3900BA ---



C3920BA ---



C3950BB ---



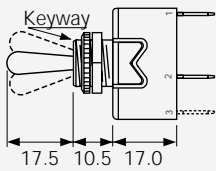
C3972BB ---



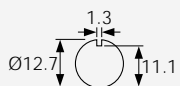
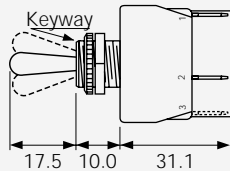
Guard R17-10
Anti-rotation tab can be specified for guard fitted in On or Off position

BODY

A
Without terminal barrier
Single pole



B
With terminal barrier
Double pole only



Panel hole (all types)

OPTIONS

Neck Seal M539

Actuator is visible



Cover M1080



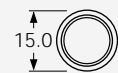
Covers have internal nylon nuts

Fixing nuts

Nickel plated brass are supplied



Hex Back nut



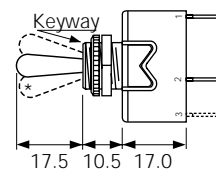
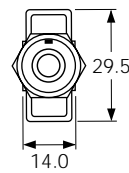
Knurled Front nut

Panel thickness 4.0 with backnut

DIMENSIONS (mm) * Indicates ON position (for On - Off switches)

Single Pole

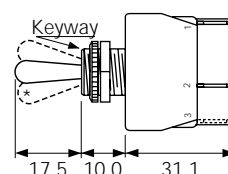
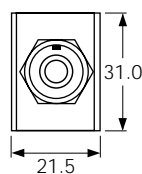
(C terminals shown)



Optional
P232 plate
SP or DP

Double Pole

(C terminals shown)

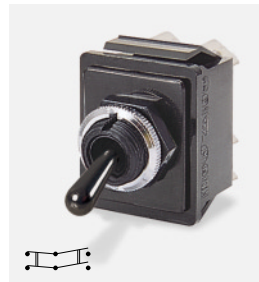




C1700RO ---



C1700HO ---



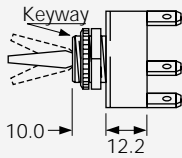
C1760RO ---



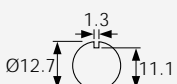
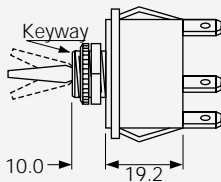
C1750HO ---

BODY

0
Single pole



0
Double pole



Panel hole (all types)
Panel thickness (Max)
Both nuts - 3.5mm
Less backnut - 6.5mm

OPTIONS

Neck Seal M539
Rubber -57T145
(H & R Actuators)
Actuator visible



Cover M1080
Rubber -57T145
(R Actuator only)



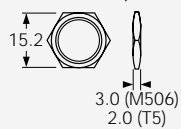
Cover M331
PVC -5T85
(R Actuator only)



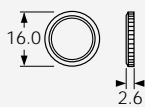
Covers have internal nylon nuts

Fixing nuts (Standard is M506 & T92)

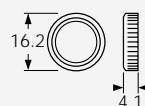
T5 Hex brass
M506 Hex nylon



T92 Knurled brass



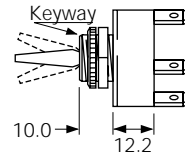
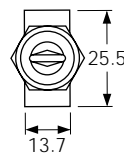
M279 Knurled nylon



DIMENSIONS (mm)

Single Pole

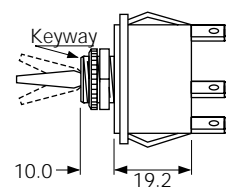
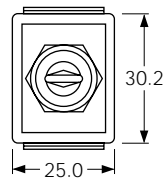
(C terminals shown)



Optional
P232 plate
SP or DP

Double Pole

(C terminals shown)



Optional terminal barrier M441 is available