

EAO – Your Expert Partner for Human Machine Interfaces

82-5152.02A4 - Indicator 19 mm stainless-steel

82-5152.02A4 - Indicator 19 mm stainless-steel



Attention: The preview is based on a sample product. This can differ from your current configuration.

Mounting

Mounting cut-out Ø 19 mm
Design flush

Front

Front dimension Ø 22 mm
Front shape round
Front ring shape flush
Front bezel material Stainless steel

Other Attributes

Operating voltage 24 V VDC
Weight 0,018 kg
Operation current 7 mA

Operating-/Indication part

Lens optics opaque
Lens material Stainless steel
Lens profile flat
Lens illumination illuminative
Lens colour Stainless steel

IP-Rating

Front protection IP 65, IP 67

Connection Method

Terminal Screw terminal

Illumination

Illumination Dot with LED bi-colour red/green

Function

Indicator

EAO – Your Expert Partner for Human Machine Interfaces

82-5152.02A4 - Indicator 19 mm stainless-steel

Dimensions

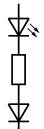


Mounting cut-outs



Wiring diagram

x2+



x1-

Component layout

