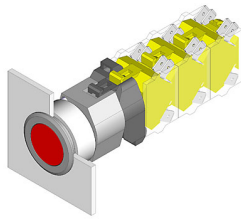


# EAO – Your Expert Partner for Human Machine Interfaces

## 704.032.618 - Illuminated pushbutton actuator

### 704.032.618 - Illuminated pushbutton actuator



*Attention: The preview is based on a sample product. This can differ from your current configuration.*

#### Mounting

Mounting cut-out Ø 30,5 mm  
Design flush

#### Front

Front shape round  
Front dimension Ø 35 mm  
Front bezel colour natural anodized  
Front bezel material Aluminium

#### Other Attributes

Weight 0,067 kg

#### Operating-/Indication part

Lens optics transparent  
Lens material Plastic  
Lens colour blue  
Lens profile flat  
Lens illumination illuminative

#### IP-Rating

Front protection IP65

#### Connection Method

Terminal Screw terminal

#### Actuator

Switching action Momentary  
Housing material Plastic  
Housing colour grey

#### Switching element

max. number of switching elements 3

#### Illumination

LED colour blue

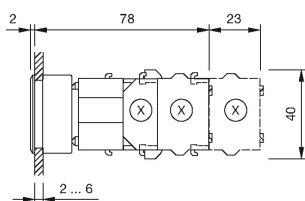
#### Function

Illuminated pushbutton

# EAO – Your Expert Partner for Human Machine Interfaces

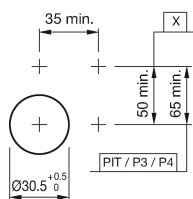
704.032.618 - Illuminated pushbutton actuator

## Dimensions



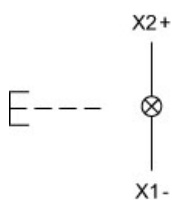
X = Screw terminal

## Mounting cut-outs



PIT = Push-in terminal

## Wiring diagram



## Additional information

Max. 3 switching elements can be clipped on  
The colour of anodized aluminium parts can vary due to technical  
production reasons

## Legend

Switching action: B = Momentary