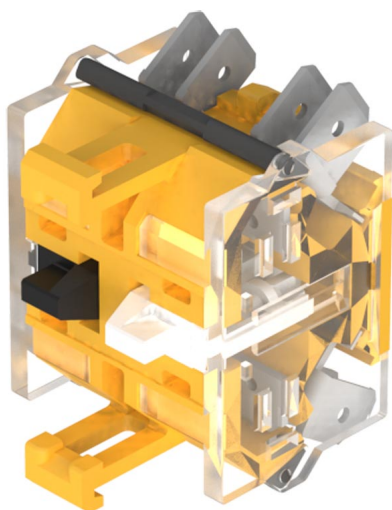


EAO – Your Expert Partner for Human Machine Interfaces

704.905.3/D - Switching element

704.905.3/D - Switching element



Attention: The preview is based on a sample product. This can differ from your current configuration.

Mounting

Mounting cut-out mm

Other Attributes

Weight 0,033 kg

Connection Method

Terminal Double plug 6.3 x 0.8 mm

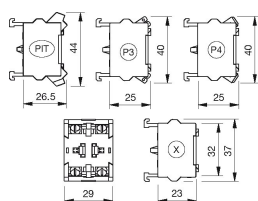
Switching element

Switching voltage	500 V AC
Switching current	6 A
Switching system	Snap-action switching element
Contacts	2 NO
Contact material	Silver

EAO – Your Expert Partner for Human Machine Interfaces

704.905.3/D - Switching element

Dimensions



P4 = Double plug-in terminal 6.3 x 0.8 mm

Wiring diagram



Additional information

For the third switching element the terminal marking insert is to be ordered separately