

## Base strip - MSTB 2,5/ 2-G - 1754436

Please be informed that the data shown in this PDF Document is generated from our Online Catalog. Please find the complete data in the user's documentation. Our General Terms of Use for Downloads are valid (<http://phoenixcontact.com/download>)

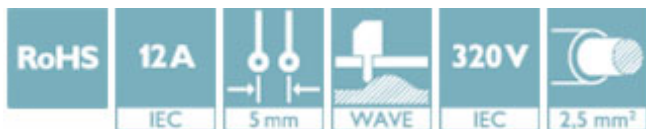
Header, nominal current: 12 A, rated voltage (III/2): 320 V, number of positions: 2, pitch: 5 mm, Color: green, contact surface: Tin, mounting: Wave soldering



The figure shows a 10-position version of the product

### Why buy this product

- ✓ Maximum flexibility when it comes to device design – one header for connectors with different connection technologies
- ✓ Easy PCB replacement thanks to plug-in modules
- ✓ Well-known mounting principle allows worldwide use
- ✓ Items that can be aligned in various pitches support flexible and space-saving PCB assembly



### Key Commercial Data

Packing unit	250 STK
Minimum order quantity	250 STK
GTIN	
GTIN	4017918028602
Weight per Piece (excluding packing)	0.610 g
Custom tariff number	85366930
Country of origin	Germany

### Technical data

#### Dimensions

Length [ l ]	12 mm
Pitch	5 mm
Dimension a	5 mm
Width [ w ]	10 mm
Constructional height	8.6 mm
Height [ h ]	12.1 mm
Length of the solder pin	3.5 mm

# Base strip - MSTB 2,5/ 2-G - 1754436

## Technical data

### Dimensions

Pin dimensions	1 x 1 mm
Hole diameter	1.4 mm

### General

Range of articles	MSTB 2,5/..-G
Insulating material group	I
Rated surge voltage (III/3)	4 kV
Rated surge voltage (III/2)	4 kV
Rated surge voltage (II/2)	4 kV
Rated voltage (III/3)	250 V
Rated voltage (III/2)	320 V
Rated voltage (II/2)	400 V
Connection in acc. with standard	EN-VDE
Nominal current $I_N$	12 A
Maximum load current	12 A
Insulating material	PA
Flammability rating according to UL 94	V0
Color	green
Number of positions	2

### Standards and Regulations

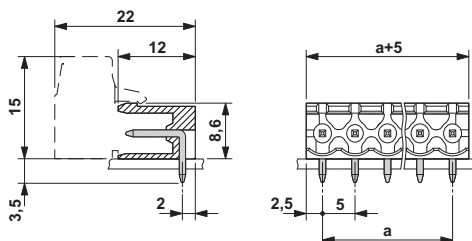
Connection in acc. with standard	EN-VDE
	CSA
Flammability rating according to UL 94	V0

### Environmental Product Compliance

China RoHS	Environmentally friendly use period: unlimited = EFUP-e
	No hazardous substances above threshold values

## Drawings

Dimensional drawing



# Base strip - MSTB 2,5/ 2-G - 1754436

## Classifications

### eCl@ss

eCl@ss 4.0	272607xx
eCl@ss 4.1	27260701
eCl@ss 5.0	27260701
eCl@ss 5.1	27260701
eCl@ss 6.0	27260704
eCl@ss 7.0	27440402
eCl@ss 8.0	27440402
eCl@ss 9.0	27440402

### ETIM

ETIM 3.0	EC001121
ETIM 4.0	EC002637
ETIM 5.0	EC002637
ETIM 6.0	EC002637

### UNSPSC

UNSPSC 6.01	30211810
UNSPSC 7.0901	39121409
UNSPSC 11	39121409
UNSPSC 12.01	39121409
UNSPSC 13.2	39121409

## Approvals


### Approvals

#### Approvals

CSA / VDE Gutachten mit Fertigungsüberwachung / IECEx CB Scheme / cULus Recognized / EAC

#### Ex Approvals

### Approval details

CSA		13631
	B	D
Nominal current I <sub>N</sub>	10 A	10 A
Nominal voltage U <sub>N</sub>	300 V	300 V

# Base strip - MSTB 2,5/ 2-G - 1754436

## Approvals

VDE Gutachten mit Fertigungsüberwachung		<a href="http://www.vde.com/en/Institute/OnlineService/VDE-approved-products/Pages/Online-Search.aspx">http://www.vde.com/en/Institute/OnlineService/VDE-approved-products/Pages/Online-Search.aspx</a>	40004701
Nominal current IN	12 A		
Nominal voltage UN	250 V		

IECEE CB Scheme		<a href="http://www.iecee.org/">http://www.iecee.org/</a>	DE1-58978-B1B2
Nominal current IN	12 A		
Nominal voltage UN	250 V		

cULus Recognized		<a href="http://database.ul.com/cgi-bin/XYV/template/LISEXT/1FRAME/index.htm">http://database.ul.com/cgi-bin/XYV/template/LISEXT/1FRAME/index.htm</a>	E60425-19931011
	B	D	
Nominal current IN	15 A	15 A	
Nominal voltage UN	300 V	150 V	

EAC		B.01742
-----	--	---------

## Accessories

Accessories

Coding element

Coding star - CR-MSTB - 1734401

Coding section, inserted into the recess in the header or the inverted plug, red insulating material



Filler plug

## Base strip - MSTB 2,5/ 2-G - 1754436

### Accessories

Accessories - MSTB-BL - 1755477



Keying cap, for forming sections, plugs onto header pin, green insulating material

---

### Flange

Accessories - MSTB-BF - 1759981



Mounting flange, for fixing both ends of the header onto the PCB, green insulating material, with M 2 x 14 screws and nuts.

---

### Labeled terminal marker

Marker card - SK 5/3,8:FORTL.ZAHLEN - 0804183

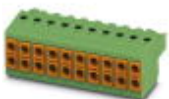


Marker card, Card, white, labeled, Horizontal: Consecutive numbers 1 - 10, 11 - 20, etc. up to 91 - (99)100, Mounting type: adhesive, for terminal block width: 5 mm, Lettering field: 5 x 3.8 mm

---

### Additional products

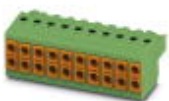
Printed-circuit board connector - TVFKC 1,5/ 2-ST - 1713839



Plug component, nominal current: 10 A, rated voltage (III/2): 320 V, number of positions: 2, pitch: 5 mm, connection method: Push-in spring connection, Color: green, contact surface: Tin

---

Printed-circuit board connector - TVFKCL 1,5/ 2-ST - 1715921



Plug component, nominal current: 10 A, rated voltage (III/2): 320 V, number of positions: 2, pitch: 5 mm, connection method: Push-in spring connection, Color: green, contact surface: Tin

---

## Base strip - MSTB 2,5/ 2-G - 1754436

### Accessories

Plug - QC 1,5/ 2-ST - 1717961



Plug component, nominal current: 12 A, rated voltage (III/2): 630 V, number of positions: 2, pitch: 5 mm, connection method: Displacement connection, Color: green, contact surface: Tin

---

Printed-circuit board connector - FKCN 2,5/ 2-ST - 1732742



Plug component, nominal current: 12 A, rated voltage (III/2): 320 V, number of positions: 2, pitch: 5 mm, connection method: Push-in spring connection, Color: green, contact surface: Tin

---

Printed-circuit board connector - MSTB 2,5/ 2-ST - 1754449



Plug component, nominal current: 12 A, rated voltage (III/2): 320 V, number of positions: 2, pitch: 5 mm, connection method: Screw connection with tension sleeve, Color: green, contact surface: Tin

---

Printed-circuit board connector - MSTBP 2,5/ 2-ST - 1765771



Plug component, nominal current: 12 A, rated voltage (III/2): 320 V, number of positions: 2, pitch: 5 mm, connection method: Screw connection with tension sleeve, Color: green, contact surface: Tin

---

Printed-circuit board connector - SMSTB 2,5/ 2-ST - 1768765



Plug component, nominal current: 12 A, rated voltage (III/2): 320 V, number of positions: 2, pitch: 5 mm, connection method: Screw connection with tension sleeve, Color: green, contact surface: Tin

---

## Base strip - MSTB 2,5/ 2-G - 1754436

### Accessories

#### Printed-circuit board connector - FRONT-MSTB 2,5/ 2-ST - 1779411

Plug component, nominal current: 12 A, rated voltage (III/2): 320 V, number of positions: 2, pitch: 5 mm, connection method: Front screw connection, Color: green, contact surface: Tin



---

#### Printed-circuit board connector - MSTBT 2,5/ 2-ST - 1779835

Plug component, nominal current: 12 A, rated voltage (III/2): 320 V, number of positions: 2, pitch: 5 mm, connection method: Screw connection with tension sleeve, Color: green, contact surface: Tin



---

#### Printed-circuit board connector - MVSTBR 2,5/ 2-ST - 1792016

Plug component, nominal current: 12 A, rated voltage (III/2): 320 V, number of positions: 2, pitch: 5 mm, connection method: Screw connection with tension sleeve, Color: green, contact surface: Tin



---

#### Printed-circuit board connector - MVSTBW 2,5/ 2-ST - 1792524

Plug component, nominal current: 12 A, rated voltage (III/2): 320 V, number of positions: 2, pitch: 5 mm, connection method: Screw connection with tension sleeve, Color: green, contact surface: Tin



---

#### Printed-circuit board connector - FKCT 2,5/ 2-ST - 1909210

Plug component, nominal current: 12 A, rated voltage (III/2): 320 V, number of positions: 2, pitch: 5 mm, connection method: Push-in spring connection, Color: green, contact surface: Tin



## Base strip - MSTB 2,5/ 2-G - 1754436

### Accessories

#### Printed-circuit board connector - FKCVR 2,5/ 2-ST - 1909715



Plug component, nominal current: 12 A, rated voltage (III/2): 320 V, number of positions: 2, pitch: 5 mm, connection method: Push-in spring connection, Color: green, contact surface: Tin

#### Printed-circuit board connector - FKCVW 2,5/ 2-ST - 1910034



Plug component, nominal current: 12 A, rated voltage (III/2): 320 V, number of positions: 2, pitch: 5 mm, connection method: Push-in spring connection, Color: green, contact surface: Tin

#### Printed-circuit board connector - FKC 2,5/ 2-ST - 1910351



Plug component, nominal current: 12 A, rated voltage (III/2): 320 V, number of positions: 2, pitch: 5 mm, connection method: Push-in spring connection, Color: green, contact surface: Tin

#### Printed-circuit board connector - QC 1/ 2-ST-BUS - 1921670



Plug component, nominal current: 10 A, rated voltage (III/2): 630 V, number of positions: 2, pitch: 5 mm, connection method: Displacement connection, Color: green, contact surface: Tin, The plug allows conductors to be looped through from module to module, without interruption

#### Printed-circuit board connector - FKCS 2,5/ 2-ST - 1974737



Plug component, nominal current: 12 A, rated voltage (III/2): 320 V, number of positions: 2, pitch: 5 mm, connection method: Push-in spring connection, Color: green, contact surface: Tin