

Category 5e Keystone Panel Mount Coupler



Category 5e Unshielded Keystone Panel Mount Coupler (FACK2pmmc)

Features

- High performance data throughput, meets Category 5e data transfer rates
- Easily mounted into panels of virtually any thickness
- Die cast adaptor is robust and ensures easy mounting (into standard cut-out) and reliable earthing

Packaging

- Supplied in individual polythene bags, then in bags of 20

Specifications

- Dimensions: 35.5 x 19.12 x 29.54mm approx. (H x W x D)
- Assembled weight (without screws): 14g approx.
- Materials:

Coupler:	Panel mount adaptor: Zinc alloy
Housing: ABS UL94V-0	
Contacts: 50µ"/ 1.27µm gold plating over nickel plated phosphor bronze	
- Colour:

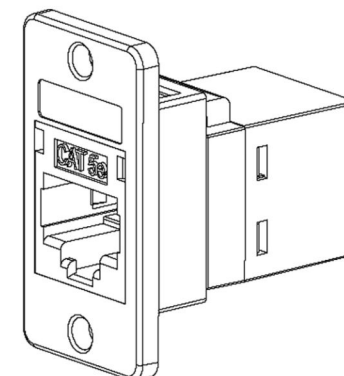
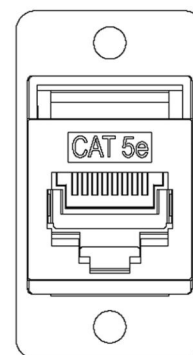
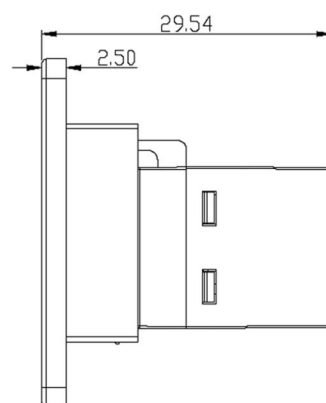
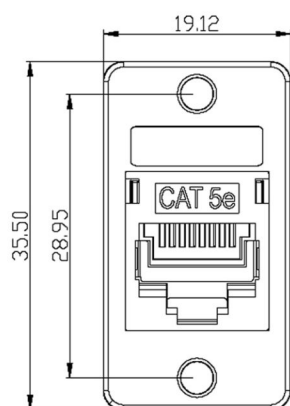
Coupler: Black	Panel mount: Silver
-----------------------	----------------------------
- Supplied with 2 pairs of screws
 - 2 x round head nickel-plated steel self-tapping screws
 - 2 x round head (4.40 x 1/4") machine screws

For more detailed coupler specifications please see the webpage below:

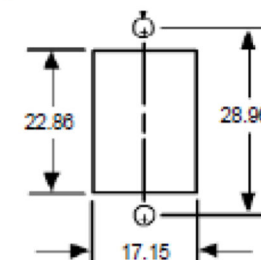
http://www.tuk.co.uk/tuk_live/product_details.php?category_id=&pld=246

ROHS Compliant

Code: **FAK2bkpmmc**



Requirements for cut-out:



ELECTRICAL

Current rating: 1.5A
Dielectric withstanding voltage: 1000VDC
Insulation resistance: 500MΩ min.
Contact resistance: 20mΩ max.

MECHANICAL

Materials: ABS UL94V-0 ; Zinc alloy
Cosmetic: Nickel Electroplating + Sandblasting
RJ45 Jack contact: 50μ"/ 1.27μm gold plating over nickel plated phosphor bronze

