

PLEASE CHECK WWW.MOLEX.COM FOR LATEST PART INFORMATION

Part Number: [1737080005](#)
Status: **Active**
Overview: PowerPlane Bus Bar Power Connectors
Description: PowerPlane Low-Profile Bus Bar Receptacle Assembly, Right Angle, Through Hole, 2.84mm Tail Length, Screw Mount, 3.18mm Bus Bar Thickness

Documents:

[Drawing \(PDF\)](#) [RoHS Certificate of Compliance \(PDF\)](#)
[Packaging Specification 1737080000-PK-000 \(PDF\)](#) [Product Literature \(PDF\)](#)

Agency Certification

CSA LR19980
 UL E29179

General

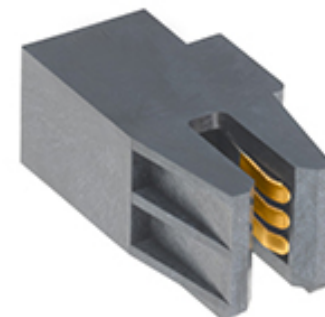
Product Family PCB Receptacles
 Series [173708](#)
 Application Power
 Overview [PowerPlane Bus Bar Power Connectors](#)
 Product Literature Order No 987651-6712
 Product Name PowerPlane
 UPC 191128277945

Physical

Circuits (Loaded) 1
 Circuits (maximum) 1
 Color - Resin Black
 Durability (mating cycles max) 200
 Flammability 94V-0
 Glow-Wire Compliant No
 Guide to Mating Part No
 Keying to Mating Part None
 Lock to Mating Part None
 Material - Metal Copper Alloy
 Material - Plating Mating Gold over Nickel
 Material - Plating Termination Tin over Nickel
 Material - Resin Liquid Crystal Polymer
 Net Weight 4.492/g
 Number of Rows 1
 Orientation Right Angle
 PC Tail Length 2.84mm
 PCB Locator No
 PCB Retention Yes
 PCB Thickness - Recommended 1.58mm
 Packaging Type Tray
 Pitch - Mating Interface N/A
 Plating min - Mating 0.762µm
 Plating min - Termination 2.540µm
 Polarized to Mating Part No
 Polarized to PCB Yes
 Stackable No
 Surface Mount Compatible (SMC) No
 Temperature Range - Operating -40°C to +105°C
 Termination Interface: Style Through Hole

Electrical

Current - Maximum per Contact 60.0A



Series image - Reference only

EU ELV

Not Relevant

EU RoHS

Compliant

REACH SVHC

Not Contained Per -
 ED/30/2017 (7 July
 2017)

Halogen-Free

Status

Low-Halogen

**Need more information on product
 environmental compliance?**

Email productcompliance@molex.com
 Please visit the [Contact Us](#) section for any
 non-product compliance questions.

China ROHS

ELV

RoHS Phthalates

Green Image

Not Relevant

Not Contained

Search Parts in this Series

[173708](#) Series

Mates With

3.18mm Thick Bus Bar Tab

Use With

Customer Supplied #2-32 Type AB Self
 Tapping Screw

Voltage - Maximum

600V AC

Material Info

Reference - Drawing Numbers

Packaging Specification

1737080000-PK-000

Sales Drawing

1737080000-000

This document was generated on 08/02/2017

PLEASE CHECK WWW.MOLEX.COM FOR LATEST PART INFORMATION