

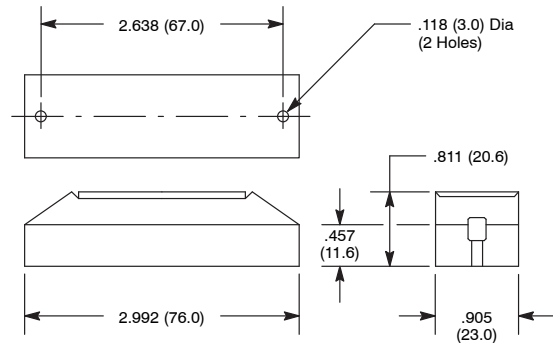
Panic Switch

Features

- Surface Mount Type
- Push Button Function
- Emergency Marking on the Button



S105



Specifications

Contact Rating: 10W/VA

Contact Resistance: 150 milliohms.

Contact Material: Silver over Palladium

Switching Voltage: 200 VDC max.

Switching Current: 500mA max.

Insulation Resistance: 10 gigohms

Shock Resistance: 30G for 11mS

Vibration Resistance: 20G (10 to 1000Hz)

Life Expectancy: 20,000,000 cycles (resistive load, 12VDC, 250mA)

Terminal Type: Y Type Tin Plated Brass

NTE Type No.	Circuitry	Action	Actuator	Diag No.
54-634	SPST-NO	NO for Closed Loop System	Microswitch	S105