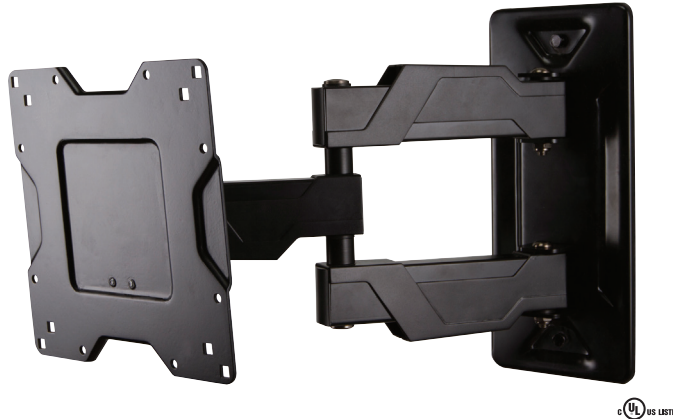


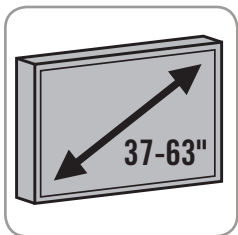
OC80FM product information sheet



The OC80FM is ideal for entry-level consumers looking for a low-profile and easy-to-use large full motion mount.

Product Benefits*

- Low 3.2" (82mm) mounting profile
- Tilt, pan and swivel for maximum viewing flexibility
- Lift n' Lock™ allows you to easily attach your TV to the mount
- Arm design provides ample throw and nests centered on the wall
- Extends 14" (357mm) from wall when in use and retracts to 3.2" (82mm) when not in use
- Integrated cable management and plastic covers hide wires
- Allows for simple leveling adjustments post-installation
- Durable powder coat finish
- Two-tone design and modern aesthetic complements newer TVs
- Includes adapters for greater VESA compatibility
- Simple to install and use
- Ships fully assembled
- Includes complete hardware kit



Take the guess work out of choosing your perfect mount! The OC80FM is compatible with most 37–63" TVs on the market today.

*Subject to change

800.MOUNT.IT (800.668.6848)

Product Specifications*

Fits most: 37–63" TVs

Supports up to: 80 lbs (36.3 kg)

Tilt: +15° to -5°

Pan: Up to 180°

Mounting profile: 3.2" (82mm)*

Maximum extension: 14" (357mm)*

VESA compliance: 200x200 to 600x400

Mounting: Single-stud or solid wall

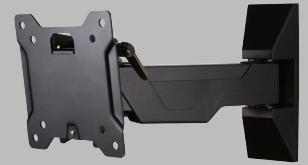
UL listed: Yes

Warranty: 5 years

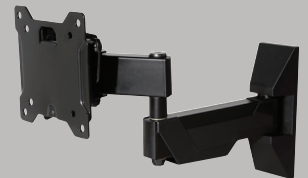
Color: Black

*adapter adds .2" (6mm)

Series



OC40FM



OC40FMX

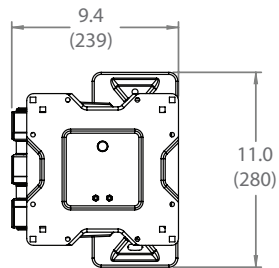


OC80FM

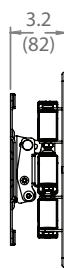


01022013

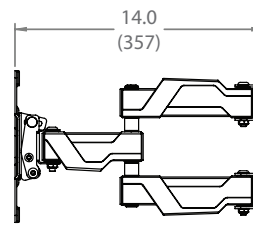
OC80FM technical data sheet



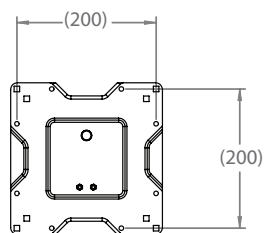
FRONT VIEW



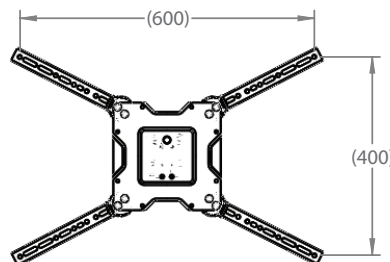
MOUNTING PROFILE



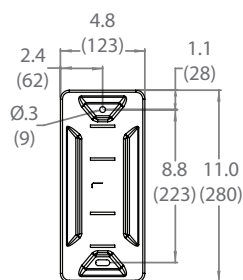
MAXIMUM EXTENSION



PANEL ATTACHMENT -
VESA COMPATABILITY (MM)



PANEL ATTACHMENT -
VESA COMPATIBILITY (mm)
WITH ADAPTERS



WALL MOUNTING



inches (mm)

| | Packaging UPC | MC UPC |
|---------------|---------------|----------------|
| Americas | 698833022070 | 10698833022077 |
| International | 698833022070 | 10698833022077 |

| | Dimensions WxDxH Inches (mm) | Wt lbs (kg) | Qty |
|-----|---------------------------------|-------------|-----|
| Box | 14.2 x 12.8 x 4.5 (360x325x113) | 11 (5) | NA |
| MC | 14.6 x 9.7 x 13.8 (370x245x350) | 23.2 (10.5) | 2 |

| Box Contents | Qty |
|--------------------------------------|-----|
| Wall plate | 1 |
| Spider46 adapter | 4 |
| Arm assembly (with cable management) | 1 |
| Monitor plate | 1 |

| Box Contents | Qty |
|----------------------------|-----|
| Tilt tension handle | 1 |
| Complete wall hardware kit | 1 |
| Complete hardware kit | 1 |
| Instruction Manual | 1 |

