



TAD – 12AY7/6072A High Performance Medium-Mu Twin Triode

The **TAD™ 12AY7/6072A** is a High Performance Medium-Mu Twin Triode. The **TAD™ 12AY7/6072A** brings back that Vintage Tone of the legendary Fender Tweed Amps of the 50's. The original tube for all those Amps. Can also be used in position which call for a 12AX7/ECC83 or 7025 to get a warmer and cleaner tone and to reduce gain to about 50%. Very suited for Fender Blackface models. Also used in some HI-End audio applications with mild yet precise overtones.

Characteristics of a bogey tube:

Electrical		
Heater:	Series	Parallel
Voltage (AC or DC)	12.6V +/-1.0	6.3+/-0.5
Current	0.15	0.3
Heating	Indirect	
Cathode-to-heater potential, max.	100 V	
Direct interelectrode capacitances, max.***		
Grid to plate	1.4 pF	
Grid to cathode	1.3 pF	
Grid to heater	1.3 pF	
Plate to cathode	0.7 pF	
Mechanical		
Operating Position	Any	
Base	E9-1, Small Buton 9 Pin	
Dimensions:		
Height	56 mm	
Seated height	49 mm	
Diameter	22.8 mm	
Cooling	conventional	
Approximate net weight	13 g	

***Without external shielding, nominal values

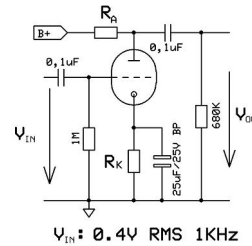
AF Power Amplifier

Maximum ratings	
DC plate voltage	300 V
Positive DC Grid Voltage	0 V
Negative DC Grid Voltage	-50 V
Plate dissipation	1.5 W
Bulb temperature (surface hottest point)	180°C
Cathode Current	10 mA

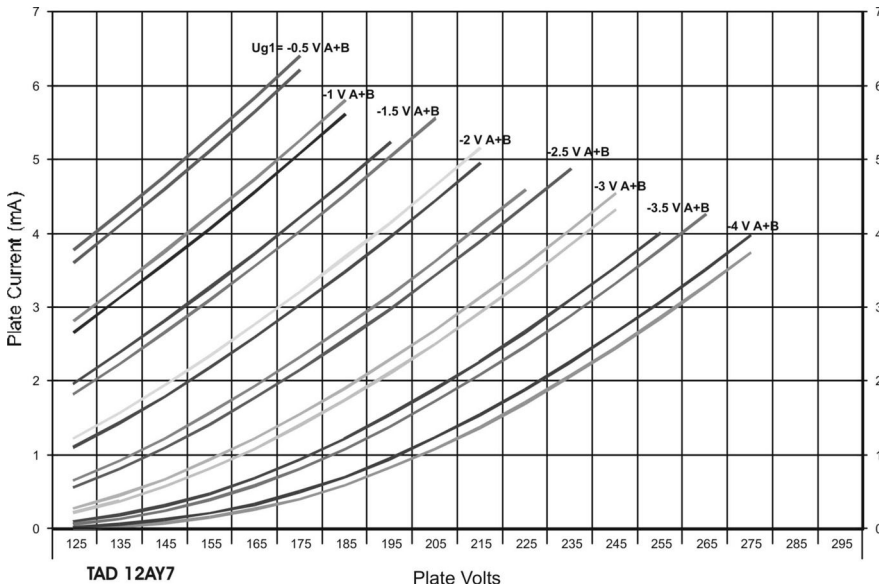
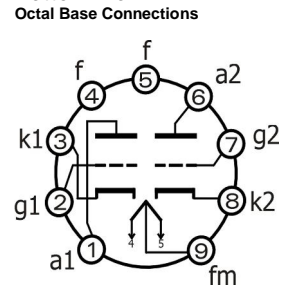
RT007, 12AY7

B+ / V	R _A / kΩ	R _K / kΩ	V _{Out} / V _{RMS}	V _{Out} / V _{IN}	THD / %	I _A / mA
200	47	1.50	9.7	24.3	1.3	1.4
250	47	1.20	10.2	25.5	0.9	2.0
300	47	1.00	10.6	26.5	0.7	2.5
350	47	0.82	11.0	27.5	0.6	3.2
400	47	0.68	11.3	28.3	0.5	3.9
200	100	1.80	11.4	28.5	1.2	0.9
250	100	1.50	11.9	29.8	0.9	1.3
300	100	1.20	12.3	30.8	0.7	1.6
350	100	1.00	12.6	31.5	0.5	2.0
400	100	0.82	12.9	32.3	0.4	2.5
200	220	2.70	12.2	30.5	1.5	0.6
250	220	2.20	12.7	31.8	1.0	0.7
300	220	1.50	13.2	33.0	0.8	1.0
350	220	1.20	13.5	33.8	0.7	1.2
400	220	1.00	13.8	34.5	0.6	1.4

Test arrangement:



Bottom View



Outline View

