

CP700

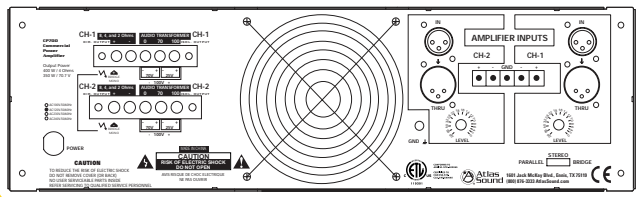
- Commercial Duty 350W/Ch (@70.7V) Stereo Power Amp
- 400 Watts per channel @ 4Ω in direct coupled mode
- (2) High quality internal toroidal transformers provide isolation in 25V, 70.7V, 100V stereo or 140V/200V bridge mode operation
- 30-position rear panel stepped input gain controls
- Terminal block and XLR inputs
- Automatic, dual speed, high efficiency fan cooling



- Short circuit, thermal, and DC offset protection

A professional grade audio power amplifier specifically designed for demanding contractor applications, the CP700 features esoteric grade toroidal power supply and output transformers. These transformers were chosen for their outstanding reliability as well as extended frequency response (-3dB @ 30Hz-70.7V output through transformer) Now you can have the peace of mind that systems specified with the CP700 will have true transformer

output isolation, a feature that may not have previously been affordable due to the cost of quality external transformers. CP700's two independent channels are driven by separate power supplies to ensure maximum channel separation and ultra low distortion figures while providing years of faithful service. Whether your application is a large, distributed, constant voltage sound system or a high SPL sound reinforcement system, the Atlas Sound CP700 is the perfect answer for high power/low cost amplification needs.



KILLER POWER!

ATLAS SOUND PREMIERES STRATEGY SERIES® MIXER POWER AMPLIFIERS



MODEL	PA601	AA35	AA120/AA240	AA120M	CP700
Power Rating	Max. Average Power @ 50Hz-20kHz with .5% THD (10-80kHz filter) 8Ω, 1kHz, 0.5% THD 70W RMS	Max. Average Power @ 50Hz-20kHz with .5% THD (10-80kHz filter) 8Ω, 1kHz, 0.5% THD 35W RMS	25V: AA120: 120W RMS AA240: 240W RMS 70V: AA120: 120W RMS AA240: 240W RMS 100V: AA120: 120W RMS AA240: 240W RMS	Max. Average Power @ 50Hz-20kHz with .5% THD (10-80kHz filter) 8Ω, 1kHz, 120W RMS	25V 280W X 2 70V 350W X 2 100V 350W X 2 140V Bridged 700W 200V Bridged 700W Max Average Power @ 35Hz-20kHz w/ 0.1% THD (10-80kHz Filter)
Inputs	Balanced Line (Phoenix) Unbalanced (RCA)	Input 1: Mic Input 1: Telephone/Line Input 2/3	Input 1: Line/Tel/Mic Inputs 2-5: Line/Mic Input 6: Line	Input 1: Line/Mic Inputs 2-4: Line/Mic Input 5: Line Input 6: Module Input	Balanced/Unbalanced
Outputs	Main: 4Ω, 70.7V, and 100V Line Out: Unbalanced 600Ω	Main: 8Ω, 25V, and 70.7V Zone 2: 8Ω, Unbalanced 1W Zone 2: 600Ω, Balanced 1.5V	Main: 8Ω, 25V, and 70.7V Zone 2: 8Ω, Unbalanced 1W Zone 2: 600Ω, Balanced 1.5V	Main: 8Ω, 25V, and 70.7V Zone 2: 8Ω, Unbalanced 1W Zone 2: 600Ω, Balanced 1.5V	8Ω, 1kHz, 0.1% THD 240W X 2 4Ω, 1kHz, 0.1% THD 400W X 2 2Ω, 1kHz, 0.1% THD 550W X 2 Bridged Mono 8Ω 850W (1kHz, 1% THD) Bridged Mono 4Ω 1100W (1kHz, 1% THD)
Power Consumption	120VA	90 Watts	AA120: 300 Watts AA240: 500 Watts	300 Watts	
Dimensions	8.27" x 3.66" x 14" (210mm x 93mm x 357mm)	8.27" x 3.66" x 10.87" (210mm x 94 mm x 276mm)	16.54" x 4.219" x 14.06" (420mm x 107mm x 357mm)	16.54" x 4.24" x 13.84" (420mm x 107.7mm x 351.5mm)	18.9" x 5.19" x 16.85" (32mm x 480mm x 428mm)
Weight	14 lbs (6.58kg)	10.2 lbs (4.64kg)	AA120: 26.44 lbs (12kg) AA240: 27.85 lbs (12.63kg)	26.75 lbs (12.16kg)	54 lbs (24.3kg)
Optional Accessories	AAVCC-5 - Control cover for all AA Series 5 Pc Bag				
	AARMK2-5 - Single/Dual rack mount kit for 1/2 rack width 2 rack unit high models		AARMK2-0 - Rack mount kit for all full rack width 2RU H models		
			AAVC-10K - Remote volume control Decora Wht/Ivry		
		AA-SMG - Sound masking module AA-ML - Mic line input module W/VCA AA-EQ3 - Patchable 3 band equalizer module AA-TG 3 - Tone/Chime module			
		AAIT-600 - 600Ω 1:1 Isolation Transformer for CH1 Tel input			



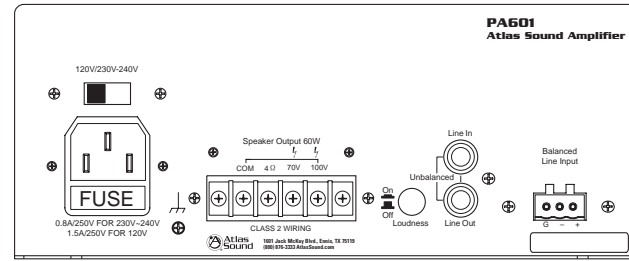
Strategy Series® Amplifiers

a brand new line of mixer amplifiers—Strategy Series Amplifiers. Designed from the ground up to address the needs of the commercial sound industry, these amplifiers include extensive feature sets, compact designs, a variety of accessories, and are engineered for long term reliability.

When it comes to the finest commercial and professional sound products in the industry, Atlas Sound delivers. This year, Atlas Sound will continue leading the industry by presenting

PA601

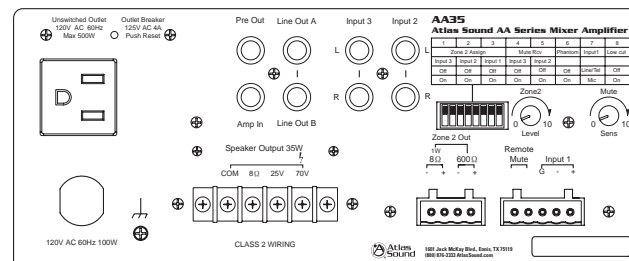
- Simple Clean Power
- 60 Watt Single Input Power Amp
- 1 Balanced or Unbalanced Input
- 1 Unbalanced Line Output
- Loudness Contour Switch (+4dBu @ 100Hz and 10kHz)



The **PA601** is the perfect choice for distributed background music (BGM) systems when the requirement is simple amplification without MOH or advanced mix functionality. The PA601 features 60 Watts of pure power in a compact package with simple, rear mounted RCA I/O. A unique loudness contour control provides just the right amount of low frequency enhancement for low level listening environments.

AA35

- 35 Watts of true output power for less money than most competitors' 15 Watt models
- 1 Mic In w/Phantom Power
- 2 Stereo Line Ins
- Dual Line Out
- Pre Out/Power In Patch
- Remote and VOX Activated Mute
- Route any source combination or entire mix bus to Zone 2 (MOH Out)
- Special Low Cut Filter is 6dBu/octave at 400Hz and also bypasses front panel bass control to allow use with paging horns like the Atlas Sound APX40TN and AP-15T



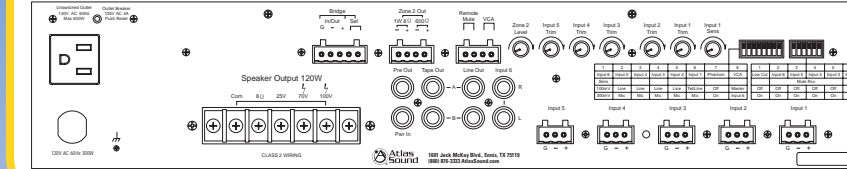
The Atlas Sound **AA35** is a 3 input channel mixer amplifier designed for distributed business paging and background music (BGM) systems, small to medium speech privacy systems, and in applications where music on hold (MOH) plus paging is required. With (1) microphone input and (2) stereo line inputs, the AA35 will accommodate a variety of input sources including paging microphones, CD players, and digital music receivers. A dip switch selectable matrix allows the creation of a Zone 2 mix from any or all of the input sources for music or messaging on hold applications. 25V, 70.7V and 8 Ohm outputs are provided. The output power of 35 Watts will match nicely with Atlas Sound FAP, SM, SD, and GD series loudspeakers. In fact, in an 11' ceiling application, the AA35 will provide power for up to 117 SD72W loudspeakers tapped at .25 Watts each while providing upwards of 84dB in the direct sound field at ear height!

AA120/AA240

- 6 Channel Mixer Amp (available with 120 or 240 Watts)
- 5 Mic/Line Inputs with Phantom Power and 1 Stereo Summing AUX Input
- Remote or VOX Mute Capabilities
- Zone 2 MOH out from CH6 line source
- Special Low Cut Filter is 6dBu/octave at 400Hz and also bypasses front panel bass control to allow use with paging horns like APX40TN and AP-15T
- Bridge In/Out Circuit with balanced link/internal relay to engage circuit. Perfect for small room combining systems eliminating the need for external electronics
- VCA control assignable to input 6 line level (BGM) input or global for the mix bus
- Pre out/power amp in for patching external processors

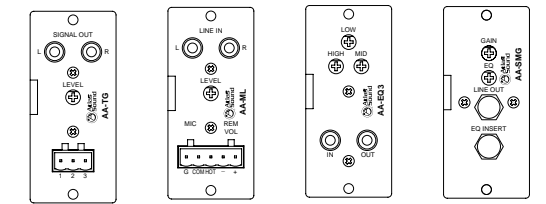


Looking for an amplifier to suit a large retail, commercial, or industrial paging and background music application? Look no further than the Atlas Sound **AA120** amplifier. This powerful 120 Watt amplifier was engineered with unique features to assist the contractor or installer in today's commercial business audio environment. This 6 input unit features extensive muting and output options along with a very unique bridge in/out feature to allow combining of multiple amplifiers in ballroom applications without the need for external relays. VCA control is also included which may be assigned to the BGM input or globally for the entire amplifier. For higher output requirements the model **AA240** is available with the same preamp section as the AA120 but with 240 Watts of power.



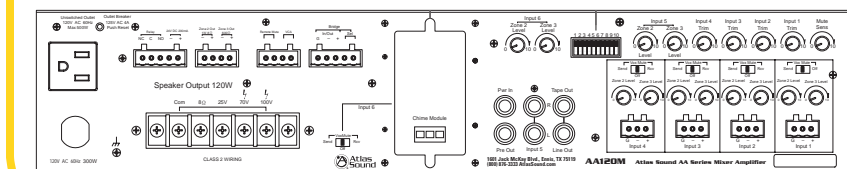
AA120M

- 4 Mic Inputs
- 1 Stereo Line (BGM) Input
- 1 Module Input
- Input Trim Control per channel
- Channel 2-5 can be configured for mute receive or mute send
- Separate Zone 2/3 Matrix per channel
- Module Input features mix bus or "amp direct" routing (Perfect for sound masking as masking source is not affected by front panel EQ settings and treble control can be used for adding HF to page in masking systems)
- VOX Mute and Contact Closure Mute may be assigned separately for "quasi" dual level mute priority via internal jumpers
- VCA control assignable to CH5 BGM input or main mix bus
- Bridge I/O with relay like AA120/AA240
- Zone 2/3 Output (line level and 1W 8Ω)
- 24VDC Output and patchable relay assignable to CC or VOX mute circuit (allows use of Atlas Sound priority attenuators without any additional hardware)



AA120M Modules (optional)

Nicknamed the "Swiss Army mixer amplifier", Atlas Sound's **AA120M** is possibly the most versatile mixer/amplifier on the market today. True 3 zone matrixing (main 120W output, 1W output, and line level output), 24VDC output with relay sync to the mute bus, bridge in/out with built-in relay control, (1) industry standard module input with direct to mix bus or direct to amp assignment, global or BGM input VCA control and multiple mute bus configuration options round out the unit's extensive feature set. The AA120M is ideal for applications such as sound masking, industrial paging, BGM, commercial PA, priority volume control applications, and hotel ballrooms/meeting rooms to name a few.





STRATEGY SERIES AMPLIFIER MODEL AA120

AA120



AA120



AA120 (Back View)

FEATURES

- 5 Mic Inputs w/ Phantom Power
- 1 Stereo Aux Line Input
- VOX and Remote Mute
- Tape Output
- Dual Line Output
- Pre Out/Power In Patch
- Remote and VOX Activated Mute
- Zone 2 (MOH Out) 1W @ 8Ω and 1.5V @ 600Ω
- VCA Level Control
- Bridge I/O (Mix Bus Combining)
- Special Low Cut Filter is 6dB/octave at 400Hz and also bypasses front panel bass control to allow use with paging horns like the Atlas Sound APX40TN and AP-15T

GENERAL DESCRIPTION

The AA120 is a 120W 6 input channel mixer amplifier engineered with unique features to assist the contractor or installer in today's commercial business audio environment. It is designed for distributed paging and background music (BGM) systems, small to medium speech privacy systems, and in applications where music on hold (MOH) plus paging is required.

With (5) microphone/line inputs and (1) stereo line input, the AA120 will accommodate a variety of input sources including paging microphones, CD players, and digital music receivers. This 6 input mixer amplifier features muting and output options along with a very unique bridge in/out feature to allow combining of multiple amplifiers in ballroom applications without the need for external relays. VCA remote level control circuitry is included which may be assigned to the BGM input or globally for the entire amplifier.

The output power of 120 Watts will match nicely with Atlas Sound FAP, SM, SD, and GD Series loudspeakers. 25V, 70.7V, 100V, and 8 Ohm outputs are provided.

SPECIFICATIONS

Power Rating: 120W RMS @ 70.7V

(Maximum average power @ 50Hz to 20kHz with .5% THD)

Inputs: Input #1 Mic/Line/Tel (optional transformer available) Inputs #2-5 Mic/Line, Input 6 unbalanced RCA Summing line level

Outputs: Main: 120W RMS 8 Ohm, 25V, 70.7V, and 100V

Zone 2: 1 Watts @ 8 Ohms & 1.5V @ 600 Ohm line level

Power Consumption: 300 Watts

Dimensions: 16.54" W x 4.21" H x 14.06" D (420mm x 107mm x 357mm)

Weight: 26.44 lbs (12kg)

FIVE

Specifications subject to change without notice



1601 JACK MCKAY BLVD. / ENNIS, TEXAS 75119 U.S.A.
TELEPHONE: (800) 876-3333 / FAX (800) 765-3435

AtlasSound.com

ARCHITECT AND ENGINEER SPECIFICATIONS

The mixer/amplifier shall control and mix up to six input signals and deliver an audio output of 120W into 8 Ohm, 25V, 70V, and 100V. The amplifier output shall be transformer isolated with a frequency response 50Hz to 20kHz (- 3dB) with less than 0.5% THD at rated output. The output regulation shall be less than 2dB, no load to full load. It shall be capable of operation from a 110/120 VAC 50/60Hz line. The mixer/amplifier shall be convection cooled. The amplifier shall have thermal and short circuit protection.

The mixer/amplifier shall have a switch-selectable MIC/TEL balanced input to accept either low impedance microphone or Tel/Line Level signals with -50/-10dBv sensitivity. The MIC/TEL input impedance shall be 10k Ohms or 600 Ohms with optional input transformer. The MIC/TEL input shall include an auto mute (VOX Mute) sensitivity control. The MUTE SENSE control will allow threshold adjustment of mute activation. The mixer/amplifier shall include 4 switch selectable MIC/Line inputs. The MIC/Line input impedance shall each be 10k Ohms. The mixer/amplifier shall have defeatable global Phantom power. The mixer/amplifier shall include a stereo summing auxiliary input, unbalanced, -10dBv, with dual-RCA jacks. The Auxiliary input impedance shall be 10k Ohms. The mixer/amplifier shall include two Zone 2 outputs, a 1W at 8 Ohms output and a transformer isolated 600 Ohm output with a maximum level of 1.5V. The Zone 2 outputs shall be assigned to the auxiliary input and has one rear panel rotary level control for both outputs. The mixer/amplifier rear panel input and output interconnects shall be via Phoenix and terminal connectors. The mixer/amplifier Mute assignment for Inputs 2-6 is via a rear panel dipswitch. Input Mute is accomplished via the REMOTE MUTE function, controlled by an external switch closure or via Input 1 VOX. The Mute assignment shall not affect the Zone 2 output.

The mixer/amplifier shall have a 400Hz 6dB per octave low cut filter. The filter can be defeated via the dipswitch located on the rear panel. When engaged, the Bass Tone control is bypassed. The mixer/amplifier shall have a Tape-Out RCA unbalanced output. The Tape -Out shall be Pre Tone and the Low Cut Filter. The mixer/amplifier shall have a Line A and B RCA unbalanced output. The Line outputs are POST Master Level, tone controls, Low Cut Filter and Power Amp In. The mixer/amplifier shall have a Pre-Out RCA unbalanced output. The Pre Out shall be POST Tone, Low Cut Filter and Pre Master Level. The mixer/amplifier shall have a Power Amp input for use with an external signal processor. The Power Amp In shall be Pre Master Level. Both the Line and Pre Outputs shall be calibrated to 0dBv and equals 1V RMS out.

The mixer/amplifier shall incorporate a balanced Bridge input/output allowing multiple amplifiers to be combined on one mixed bus. The Bridge input shall be activated via an external switch closure. The mixer amplifier shall incorporate VCA remote level control circuitry for either Master or Auxiliary level via an optional external 10K potentiometer.

The AA120 front panel shall include volume controls for Inputs 1-6 and one Master Level control. System Signal, Peak and Power LEDs shall also be incorporated. The mixer/amplifier front panel shall also include Bass and Treble tone controls (100Hz and 10kHz, ± 10 dB). The tone controls shall not affect the Zone 2 output. The mixer/amplifier front panel shall include an AC Mains power switch.

A rear panel AC receptacle (unswitched) shall be included for connection of external equipment. Dimensions (W x H x D) shall be 16.54" (42.01cm) x 4.21" (10.7cm) x 14.06" (35.71cm). Net weight shall be 26.44 lbs (12kg). Front panel finish and material shall be black ABS resin and case finish and material shall be black powder coated sheet steel.

The mixer/amplifier shall be Atlas Sound Model AA120.

The optional rack-mount bracket kit shall be an Atlas Sound AARMK2-0.

The optional input one transformer shall be an Atlas Sound AAIT-600.

The optional level security covers shall be an Atlas Sound AAVCC-5.

The optional VCA 10k Ω level control shall be an Atlas Sound AAVC-10K.

Specifications subject to change without notice



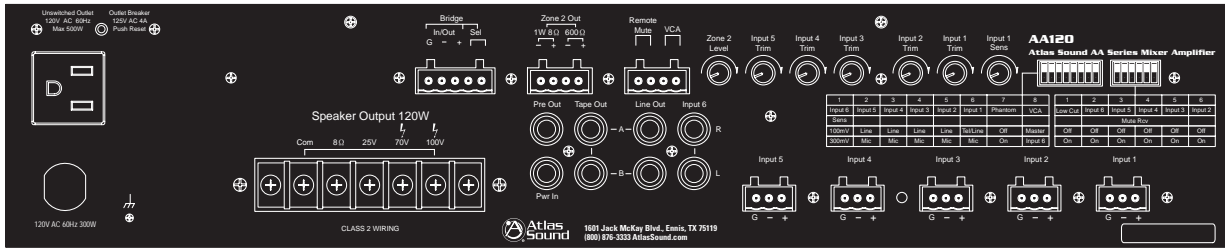
1601 JACK MCKAY BLVD. / ENNIS, TEXAS 75119 U.S.A.
TELEPHONE: (800) 876-3333 / FAX (800) 765-3435

AtlasSound.com



STRATEGY SERIES AMPLIFIER MODEL AA120

AA120



POWER OUTPUT		
Max. Average Power @ 50Hz-20kHz with .5% THD (10-80kHz filter) 8 Ohm, 1kHz, 120W RMS		
TRANSFORMER OUTPUTS		
8Ω		120W RMS
25V		120W RMS
70V		120W RMS
100V		120W RMS
FREQUENCY RESPONSE		
50Hz-20kHz ± 3dB		
DISTORTION		
<1% at rated power (1kHz)		
SENSITIVITY		
Input 1	Line/Tel	316mV (-10dBV) 10k Ohm (600Ω w/ optional transformer)
	Mic	.316mV~3.16mV (-70dBV~ -50dBV)
Inputs 2-5	Line	316mV (-10dBV) 10k Ohm
	Mic	.316mV~3.16mV (-70dBV~ -50dBV)
Input 6	Line	300mV/100mV (-10dBV/-20dBV) Selectable
OUTPUTS		
Main:		Transformer coupled, balanced, 8Ω, 25V, 70V, and 100V
Zone 2- 8Ω		Unbalanced 1W
Zone 2- 600Ω		Balanced 1.5V
SIGNAL TO NOISE RATIO		
Mic		>55dB
Line		>55dB
Telephone		>75dB
TONE CONTROLS		
Bass		±10dB @ 100Hz
Treble		±10dB @ 10kHz
INDICATORS		
Power, signal, peak		
POWER CONSUMPTION		
300 Watts		
DIMENSIONS		
16.54"W x 4.219"H x 14.06"D (420mm X 107mm X 357mm)		
WEIGHT		
26.44 lbs (12kg)		

Specifications subject to change without notice



1601 JACK MCKAY BLVD. / ENNIS, TEXAS 75119 U.S.A.
TELEPHONE: (800) 876-3333 / FAX (800) 765-3435

AtlasSound.com