



Quick Installation Guide



TPE-S44

Table of Contents

English	1
1. Before You Start	1
2. Identifying External Components	3
3. Hardware Installation	6
Technical Specifications	8
Troubleshooting	10

1. Before You Start



Package Contents

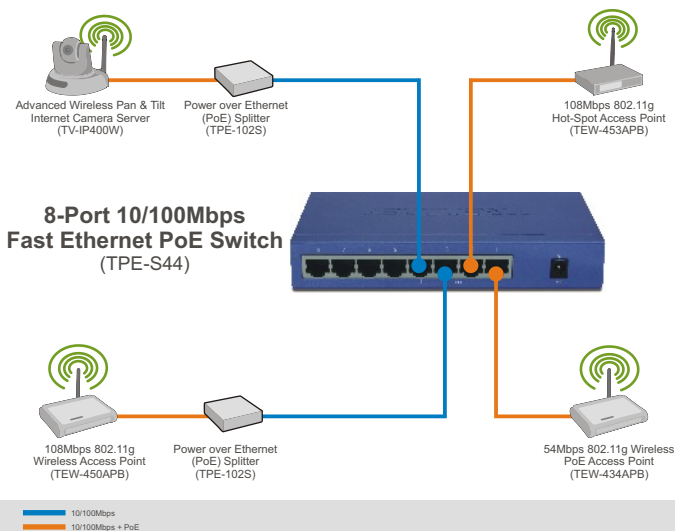
- TPE-S44
- Quick Installation Guide
- Power cord
- Rubber Feet
- AC Power Adapter (48V DC, 0.8A)

System Requirements

- Computer with Network adapter installed
- RJ-45 Network Cable
- The surface must support at least 1.5 Kg for the Switch
- The power outlet should be within 1.82 meters (6 feet) of the Switch
- Visually inspect the DC power jack to make sure that it is securely connected to the power adapter
- Make sure that there is proper heat dissipation and adequate ventilation around the Switch
- Do not place heavy objects on the Switch
- IEEE 802.3af Powered Device
- TPE-102S (Optional)

Note: The TPE-S44 only supports Powered Devices that follow the IEEE 802.3af Mode A (pin 1, 2, 3, 6) standard

Application



2. Identifying External Components

This section identifies all the major external components of the Switch. Both the front and rear panels are shown with descriptions of each feature.

Note: When you power on the Switch, all LEDs will turn ON for about 1 second and then turn OFF. Only the Power LED will stay lit.

Front Panel

PoE MAX

If the Switch detects there is 7.5W of power or less available, this LED will light up. This indicates a power overload. If the Switch detects there is more than 7.5W of power available, the LED will not light up.

PoE Status (Ports 1~4)

When the Switch is connected to a PoE device and the port supplies power successfully, the LED is green. When the LED is red, the port has failed to provide power. When there is no Powered Device connected, the LED is not lit.



Front Panel

System Power

When the LED is lit, the Switch is receiving power.



100Mbps (Ports 1~8)

When the LED is lit, the port is connected to an active Fast Ethernet device. When the LED is not lit, the port is either connected to an Ethernet connection or there is no connection to the port.

Link/Act (Ports 1~8)

When the LED is lit, the port is connected to an active Ethernet/Fast Ethernet device. It blinks green when the port is transmitting or receiving data.

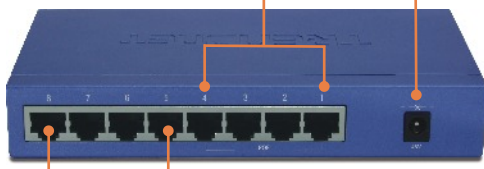
Rear Panel

PoE Ports (1~4)

The PoE port will be automatically activated when a compatible device is detected. The Switch will supply power through the Ethernet port to the connected Powered Device.

DC Power Jack

Power is supplied through an external AC power adapter. Check the technical specification section for information about the DC power input voltage. Since the Switch does not include a power on/off switch, plugging its power adapter into a power outlet will immediately power on the Switch.



Ethernet Ports (5~8)

When the LED is lit green, the Switch is receiving power.

3. Hardware Installation

Note: The maximum amount of power available is 15.4 Watts per port and 30 Watts total. If a power overload has occurred, the Switch will prioritize the distribution of power by port (from lowest to highest). That is, port 1 will receive the highest priority and port 4 will receive the lowest priority. The ports with lower priority will have their PoE function disabled until more than 7.5 watts of power becomes available.

1. Plug the power cord into the **AC Power Adapter**. Connect the **AC Power Adapter** to the TPE-S44 and then to a power outlet.



2. Connect a RJ-45 network cable from the computer to an available Ethernet port on the TPE-S44.



3. Connect a RJ-45 cable from a PoE port (1~4) on the TPE-S44 to the **LAN** port of the PoE device (e.g. TEW-434APB)



4. Verify that the following panel lights are on: **System Power, PoE Status and Link/ACT**.



Using a non-PoE device with the TPE-S44 and the TPE-102S

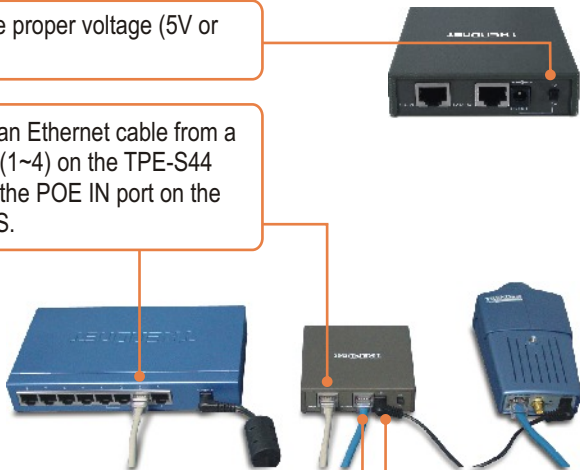
1. Select the proper voltage (5V or 12V).

2. Connect an Ethernet cable from a PoE port (1~4) on the TPE-S44 switch to the POE IN port on the TPE-102S.

3. Connect an Ethernet cable from a non-PoE device to the DATA OUT port on the TPE-102S.

4. Connect the provided Jumper cable to a non-PoE device (e.g. TV-IP100) and to the TPE-102S.

5. Verify that the following panel lights are on: **System Power, PoE Status and Link/ACT.**



General	
Standards	IEEE 802.3 10BASE-T Ethernet IEEE 802.3u 100BASE-TX Fast Ethernet ANSI/IEEE 802.3 NWay Auto-negotiation IEEE 802.3x Full-Duplex Flow Control IEEE 802.3af Power over Ethernet
Protocol	CSMA/CD
Data Transfer Rates	Ethernet: 10Mbps (half-duplex), 20Mbps (full-duplex) Fast Ethernet: 100Mbps (half-duplex), 200Mbps (full-duplex)
Topology	Star
Network Cables	Ethernet: UTP/STP CAT-3, -4, -5 ; up to 100M Fast Ethernet: UTP/STP CAT-5, -5e, -6; up to 100M
Number of Ports	4 × 10/100Mbps Auto-MDIX RJ45 ports with PoE enabled (port 1 ~ port 4) 4 × 10/100Mbps Auto-MDIX RJ45 ports (port 5 ~ port 8)
PoE Power on RJ-45	Power+: pin 3 & pin 6 Power-: pin 1 & pin 2
LED	Per Unit: System Power; PoE Max Per 10/100 Port: Link/ACT, 100 Per PoE Port: PoE Status, Link/ACT, 100

Physical and Environmental

DC inputs	48V DC, 0.8A
Power Consumption	6.3 watts. (max. for ports 5~8) 30 watts (max for PoE ports) 36.3 watts (total)
Temperature	Operating: 0° ~ 40° C, Storage: -10° ~ 70° C
Humidity	Operating: 10% ~ 90%, Storage:5% ~ 90%
Dimensions	171 x 98 x 29 mm
Weight	44g
Certification	CE, FCC

Performance

Transmission Method	Store-and-forward
Packet Filtering/ Forwarding Rate	10Mbps Ethernet: 14,880pps (packet per second) 100Mbps Fast Ethernet: 148,800pps
MAC Address Learning	Automatic Update
RAM Buffer	96K bytes per device
Filtering Address Table	1K entries per device

Q1: After connecting the Switch to a power outlet, the LEDs do not turn on.

A1: Check the connection of the external power adapter to the TPE-S44 and the power outlet. Also check that the power outlet is receiving power.

Q2: After I connect my PCs to the Switch, I am unable to share files.

A2: First, check the LEDs on the Switch. Make sure the Link/ACT LED is on. Second, check the network cable. The minimum length of the cable is 1.5 meters and the maximum length of the cable is 100 meters. Third, disable any software firewall program. Fourth, verify that you have file sharing enabled. Please contact your Operating System support for more information.

Q3: After I connect my PCs to the Switch, I can only get onto the Internet from one computer.

A3: The Switch was not designed to share Internet between multiple computers. You need to get an Internet router such as the TW100-S4W1CA.

Q4: My 802.3af Powered device does not power on when I plug the device into the Switch. What should I do?

A4: First, verify that the PoE device supports IEEE 802.3af protocol. Second, power cycle the PoE switch. Unplug power to the Switch, wait 15 seconds, then plug the power back in. Third, plug the device into a different port on the PoE switch. Fourth, try using another RJ-45 network cable. Fifth, a power overload may have occurred. Connect your 802.3af Powered Device into port 1 and/or disconnect all other 802.3af Powered Device.

If you still encounter problems or have any questions regarding the TPE-S44 please contact TRENDnet's Technical Support Department.

Limited Warranty

TRENDnet warrants its products against defects in material and workmanship, under normal use and service, for the following lengths of time from the date of purchase.

TPE-S44 - 5-Year Warranty

If a product does not operate as warranted above during the applicable warranty period, TRENDnet shall, at its option and expense, repair the defective product or deliver to customer an equivalent product to replace the defective item. All products that are replaced will become the property of TRENDnet. Replacement products may be new or reconditioned.

TRENDnet shall not be responsible for any software, firmware, information, or memory data of customer contained in, stored on, or integrated with any products returned to TRENDnet pursuant to any warranty.

There are no user serviceable parts inside the product. Do not remove or attempt to service the product through any unauthorized service center. This warranty is voided if (i) the product has been modified or repaired by any unauthorized service center, (ii) the product was subject to accident, abuse, or improper use (iii) the product was subject to conditions more severe than those specified in the manual.

Warranty service may be obtained by contacting TRENDnet office within the applicable warranty period for a Return Material Authorization (RMA) number, accompanied by a copy of the dated proof of the purchase. Products returned to TRENDnet must be pre-authorized by TRENDnet with RMA number marked on the outside of the package, and sent prepaid, insured and packaged appropriately for safe shipment.

WARRANTIES EXCLUSIVE: IF THE TRENDNET PRODUCT DOES NOT OPERATE AS WARRANTED ABOVE, THE CUSTOMER'S SOLE REMEDY SHALL BE, AT TRENDNET'S OPTION, REPAIR OR REPLACEMENT. THE FOREGOING WARRANTIES AND REMEDIES ARE EXCLUSIVE AND ARE IN LIEU OF ALL OTHER WARRANTIES, EXPRESSED OR IMPLIED, EITHER IN FACT OR BY OPERATION OF LAW, STATUTORY OR OTHERWISE, INCLUDING WARRANTIES OF MERCHANTABILITY AND FITNESS FOR A PARTICULAR PURPOSE. TRENDNET NEITHER ASSUMES NOR AUTHORIZES ANY OTHER PERSON TO ASSUME FOR IT ANY OTHER LIABILITY IN CONNECTION WITH THE SALE, INSTALLATION, MAINTENANCE OR USE OF TRENDNET'S PRODUCTS.

TRENDNET SHALL NOT BE LIABLE UNDER THIS WARRANTY IF ITS TESTING AND EXAMINATION DISCLOSE THAT THE ALLEGED DEFECT IN THE PRODUCT DOES NOT EXIST OR WAS CAUSED BY CUSTOMER'S OR ANY THIRD PERSON'S MISUSE, NEGLIGENCE, IMPROPER INSTALLATION OR TESTING, UNAUTHORIZED ATTEMPTS TO REPAIR OR MODIFY, OR ANY OTHER CAUSE BEYOND THE RANGE OF THE INTENDED USE, OR BY ACCIDENT, FIRE, LIGHTNING, OR OTHER HAZARD.

LIMITATION OF LIABILITY: TO THE FULL EXTENT ALLOWED BY LAW TRENDNET ALSO EXCLUDES FOR ITSELF AND ITS SUPPLIERS ANY LIABILITY, WHETHER BASED IN CONTRACT OR TORT (INCLUDING NEGLIGENCE), FOR INCIDENTAL, CONSEQUENTIAL, INDIRECT, SPECIAL, OR PUNITIVE DAMAGES OF ANY KIND, OR FOR LOSS OF REVENUE OR PROFITS, LOSS OF BUSINESS, LOSS OF INFORMATION OR DATA, OR OTHER FINANCIAL LOSS ARISING OUT OF OR IN CONNECTION WITH THE SALE, INSTALLATION, MAINTENANCE, USE, PERFORMANCE, FAILURE, OR INTERRUPTION OF THE POSSIBILITY OF SUCH DAMAGES, AND LIMITS ITS LIABILITY TO REPAIR, REPLACEMENT, OR REFUND OF THE PURCHASE PRICE PAID, AT TRENDNET'S OPTION. THIS DISCLAIMER OF LIABILITY FOR DAMAGES WILL NOT BE AFFECTED IF ANY REMEDY PROVIDED HEREIN SHALL FAIL OF ITS ESSENTIAL PURPOSE.

Governing Law: This Limited Warranty shall be governed by the laws of the state of California.

Note: AC/DC Power Adapter, Cooling Fan, Cables and Power Supply carry a 1-Year Warranty

Certifications

This equipment has been tested and found to comply with FCC and CE Rules.

Operation is subject to the following two conditions:

- (1) This device may not cause harmful interference.
- (2) This device must accept any interference received. Including interference that may cause undesired operation.



Waste electrical and electronic products must not be disposed of with household waste. Please recycle where facilities exist. Check with you Local Authority or Retailer for recycling advice.



NOTE: THE MANUFACTURER IS NOT RESPONSIBLE FOR ANY RADIO OR TV INTERFERENCE CAUSED BY UNAUTHORIZED MODIFICATIONS TO THIS EQUIPMENT. SUCH MODIFICATIONS COULD VOID THE USER'S AUTHORITY TO OPERATE THE EQUIPMENT.

ADVERTENCIA

En todos nuestros equipos se mencionan claramente las características del adaptador de alimentación necesario para su funcionamiento. El uso de un adaptador distinto al mencionado puede producir daños físicos y/o daños al equipo conectado. El adaptador de alimentación debe operar con voltaje y frecuencia de la energía eléctrica domiciliar existente en el país o zona de instalación.



TRENDnet Technical Support

US • Canada

Toll Free Telephone: 1(866) 845-3673

24/7 Tech Support



Europe (Germany • France • Italy • Spain • Switzerland • UK)

Toll Free Telephone: +00800 60 76 76 67

English/Espanol - 24/7

Francais/Deutsch - 11am-8pm, Monday - Friday MET

Worldwide

Telephone: +(31) (0) 20 504 05 35

English/Espanol - 24/7

Francais/Deutsch - 11am-8pm, Monday - Friday MET

Product Warranty Registration

Please take a moment to register your product online.

Go to TRENDnet's website at <http://www.trendnet.com>

TRENDnet[®]
20675 Manhattan Place
Torrance, CA 90501
USA