



# LCD Monitor User Manual

## 50S (LED Backlight)



Safety.....	4
National Conventions.....	4
Power .....	5
Installation.....	6
Cleaning.....	7
Other.....	8
Setup .....	9
Contents in Box .....	9
Setup Stand & Base .....	10
Adjusting Viewing Angle.....	11
Connecting the Monitor.....	12
Adjusting .....	13
Setting Optimal Resolution .....	13
Windows Vista .....	13
Windows XP .....	15
Windows ME/2000.....	16
Hotkeys.....	17
OSD Setting.....	18
Luminance .....	19
Image Setup .....	21
Color Setup.....	22
Picture Boost.....	23
OSD Setup .....	24
Extra .....	25
Exit.....	26
LED Indicator .....	27
Driver .....	28
Monitor Driver .....	28
Windows 2000 .....	28
Windows ME.....	28
Windows XP .....	29
Windows Vista .....	32
Windows 7 .....	34
Windows 8 .....	38
i-Menu.....	39
e-Saver .....	40
Screen+ .....	42
Troubleshoot.....	43
Specification.....	45
General Specification.....	45
N950Sw/e950Swda / e950Swdak/ e950Swa/ e950Sw/ e950Swn/ E950SWDAN .....	45
e950S /e950Sn/e950Snk.....	46
E2050SW /E2050SWD/ E2050SWDA.....	47
e2050Sn / e2050Snk/ e2050Sa/ e2050S/ e2050Sda/ e2050Sd/ e2050Sdan.....	48
e2250Swn / e2250Swnk/ e2250Swdn / e2250Swdnk/ e2250Swh/ e2250Swda / e2250Swdak/ e2250Swd/ e2250Swa/ e2250Sw/ E2250SWVD.....	49

e2250Sda/ e2250Sd/ e2250Sh.....	50
e2350Sa/ e2350Sda / e2350Sd/ e2350Sh / e2350Shk .....	51
e2450Swda / e2450Swdak/ e2450Swd/ e2450SwH / e2450SwHk.....	52
Preset Display Modes .....	53
Pin Assignments .....	54
Plug and Play.....	56
Regulation.....	57
FCC Notice .....	57
WEEE Declaration .....	58
WEEE Declaration for India .....	58
EPA Energy Star .....	59
EPEAT Declaration .....	60
TCO DOCUMENT (Optional) .....	61
Service.....	62
Warranty Statement for Europe .....	62
Warranty Statement for North & South America (excluding Brazil) .....	64

# Safety

## National Conventions

The following subsections describe notational conventions used in this document.

### Notes, Cautions, and Warnings

Throughout this guide, blocks of text may be accompanied by an icon and printed in bold type or in italic type. These blocks are notes, cautions, and warnings, and they are used as follows:



**NOTE:** A NOTE indicates important information that helps you make better use of your computer system.





**CAUTION:** A CAUTION indicates either potential damage to hardware or loss of data and tells you how to avoid the problem.





**WARNING:** A WARNING indicates the potential for bodily harm and tells you how to avoid the problem. Some warnings may appear in alternate formats and may be unaccompanied by an icon. In such cases, the specific presentation of the warning is mandated by regulatory authority.


## Power


 The monitor should be operated only from the type of power source indicated on the label. If you are not sure of the type of power supplied to your home, consult your dealer or local power company.


 The monitor is equipped with a three-pronged grounded plug, a plug with a third (grounding) pin. This plug will fit only into a grounded power outlet as a safety feature. If your outlet does not accommodate the three-wire plug, have an electrician install the correct outlet, or use an adapter to ground the appliance safely. Do not defeat the safety purpose of the grounded plug.

 Unplug the unit during a lightning storm or when it will not be used for long periods of time. This will protect the monitor from damage due to power surges.

 Do not overload power strips and extension cords. Overloading can result in fire or electric shock.

 To ensure satisfactory operation, use the monitor only with UL listed computers which have appropriate configured receptacles marked between 100 - 240V ~, Min. 5A

 The wall socket shall be installed near the equipment and shall be easily accessible.

 For use only with the attached power adapter (Output 12Vdc) which have UL,CSA listed license (Only for monitors with power adapter).

# Installation

**!** Do not place the monitor on an unstable cart, stand, tripod, bracket, or table. If the monitor falls, it can injure a person and cause serious damage to this product. Use only a cart, stand, tripod, bracket, or table recommended by the manufacturer or sold with this product. Follow the manufacturer's instructions when installing the product and use mounting accessories recommended by the manufacturer. A product and cart combination should be moved with care.

**!** Never push any object into the slot on the monitor cabinet. It could damage circuit parts causing a fire or electric shock. Never spill liquids on the monitor.

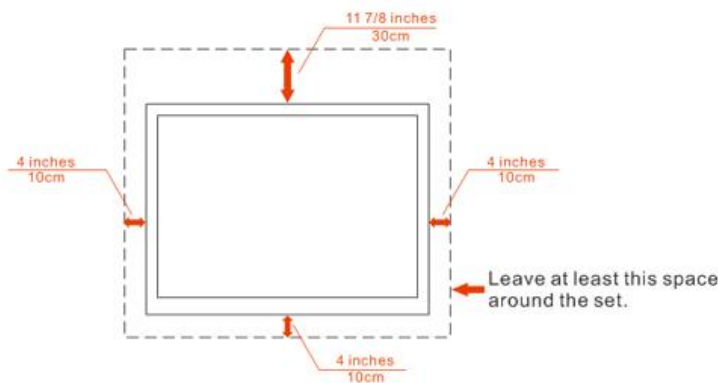
**!** Do not place the front of the product on the floor.

**!** If you mount the monitor on a wall or shelf, use a mounting kit approved by the manufacturer and follow the kit instructions.

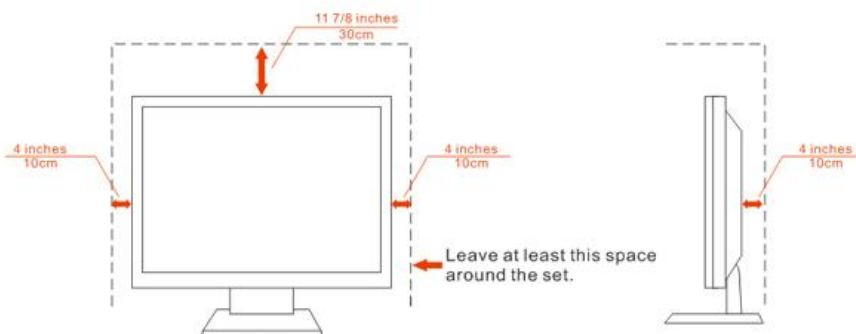
**!** Leave some space around the monitor as shown below. Otherwise, air-circulation may be inadequate hence overheating may cause a fire or damage to the monitor.

See below the recommended ventilation areas around the monitor when the monitor is installed on the wall or on the stand:

## Installed on the wall



## Installed with stand



## Cleaning


⚠️ Clean the cabinet regularly with cloth. You can use soft-detergent to wipe out the stain, instead of strong-detergent which will cauterize the product cabinet.


⚠️ When cleaning, make sure no detergent is leaked into the product. The cleaning cloth should not be too rough as it will scratch the screen surface.


⚠️ Please disconnect the power cord before cleaning the product.




## Other

 If the product is emitting a strange smell, sound or smoke, disconnect the power plug IMMEDIATELY and contact a Service Center.

 Make sure that the ventilating openings are not blocked by a table or curtain.

 Do not engage the LCD monitor in severe vibration or high impact conditions during operation.

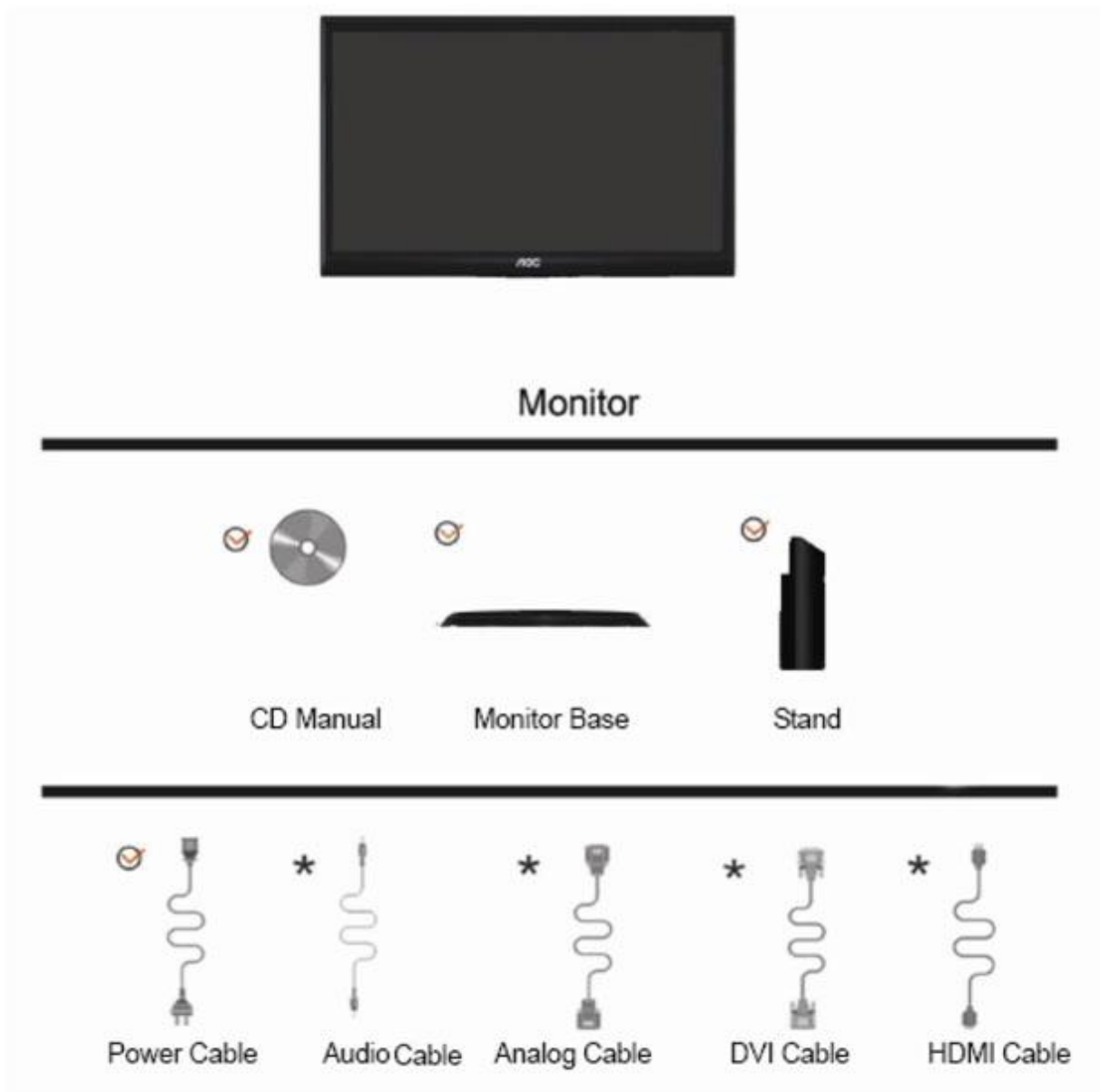
 Do not knock or drop the monitor during operation or transportation.

 For display with glossy bezel the user should consider the placement of the display as the bezel may cause disturbing reflections from surrounding light and bright surfaces.



# Setup

## Contents in Box

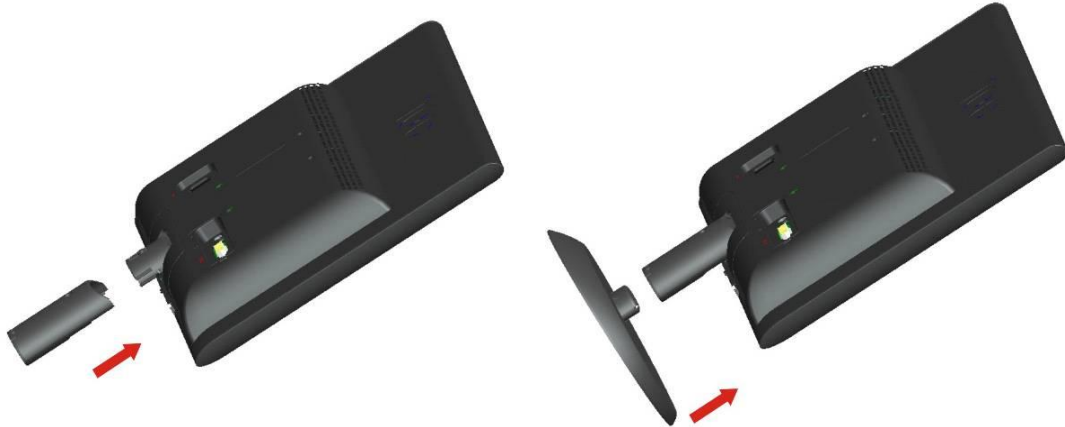


\*Not all signal cables (Analog, Audio, DVI, and HDMI cables) will be provided for all countries and regions. Please check with the local dealer or AOC branch office for confirmation.

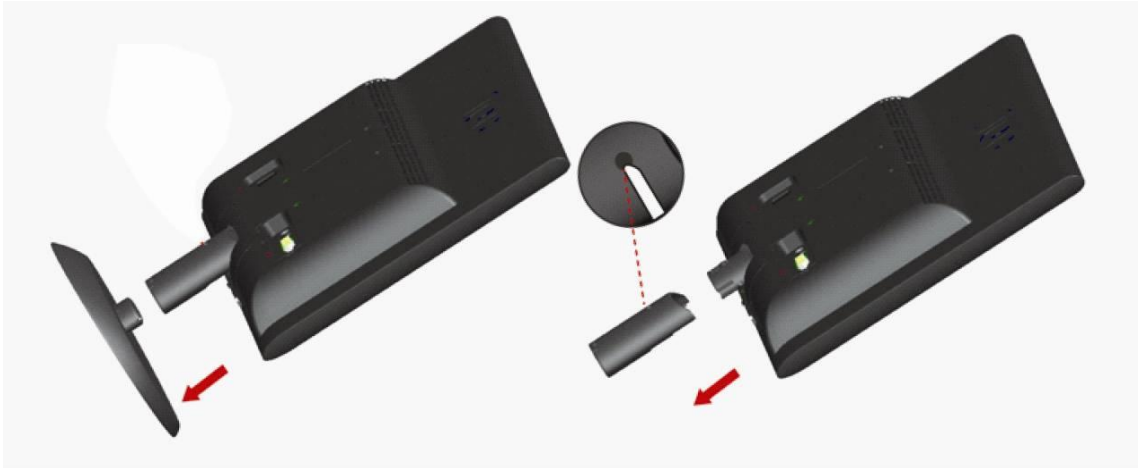
# Setup Stand & Base

Please setup or remove the base following the steps as below.

Setup:



Remove:

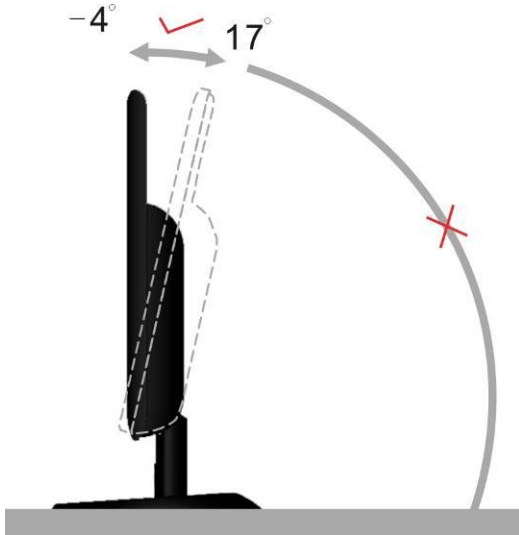


## Adjusting Viewing Angle

For optimal viewing it is recommended to look at the full face of the monitor, then adjust the monitor's angle to your own preference.

Hold the stand so you will not topple the monitor when you change the monitor's angle.

You are able to adjust the monitor's angle from  $-4^{\circ}$  to  $17^{\circ}$ .

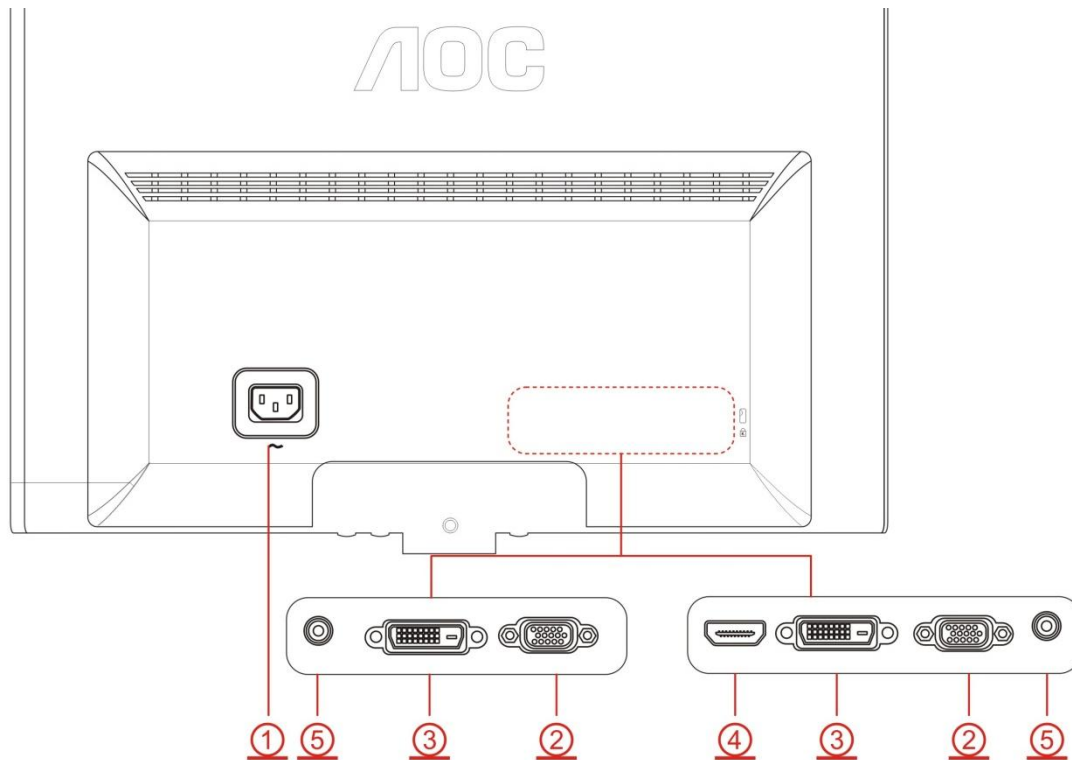


### NOTE:

Do not touch the LCD screen when you change the angle. It may cause damage or break the LCD screen.

# Connecting the Monitor

Cable Connections In Back of Monitor and Computer:



1. AC port
2. VGA
3. DVI (available for selected models)
4. HDMI(available for selected models)
5. Audio(available for selected models)

To protect equipment, always turn off the PC and LCD monitor before connecting.

1. Connect the power cable to the AC port on the back of the monitor.
2. Connect one end of the 15-pin D-Sub cable to the back of the monitor and connect the other end to the computer's D-Sub port.
3. Optional –( Requires a video card with DVI port) - Connect one end of the DVI cable to the back of the monitor and connect the other end to the computer's DVI port.
4. Optional –( Requires a video card with HDMI port) - Connect one end of the HDMI cable to the back of the monitor and connect the other end to the computer's HDMI port.
5. Optional –(Requires a video card with Audio port) - Connect one end of the Audio cable to the back of the monitor and connect the other end to the computer's Audio port..
6. Turn on your monitor and computer.

If your monitor displays an image, installation is complete. If it does not display an image, please refer Troubleshooting.

# Adjusting

## Setting Optimal Resolution

### Windows Vista

For Windows Vista:

1 Click **START**.

2 Click **CONTROL PANEL**.



3 Click **Appearance and Personalization**.



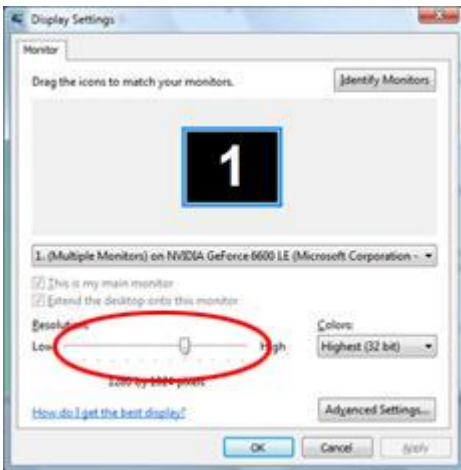
4 Click **Personalization**



5 Click **Display Settings**.



6 Set the resolution **SLIDE-BAR** to Optimal preset resolution.



# Windows XP

For Windows XP:

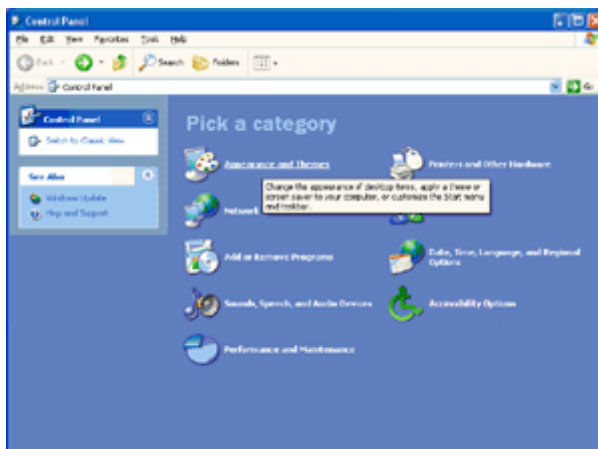
1 Click **START**.



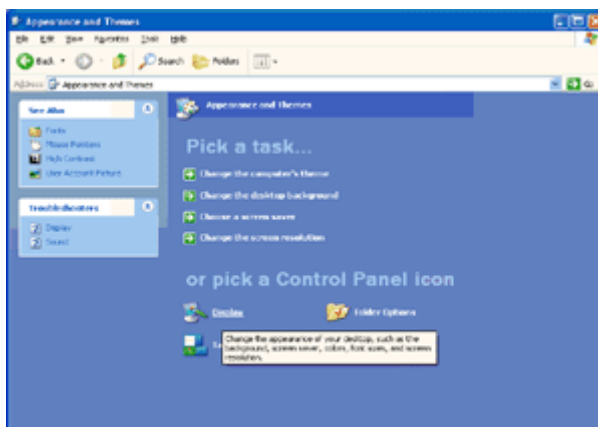
2 Click **SETTINGS**.

3 Click **CONTROL PANEL**.

4 Click **Appearance and Themes**.

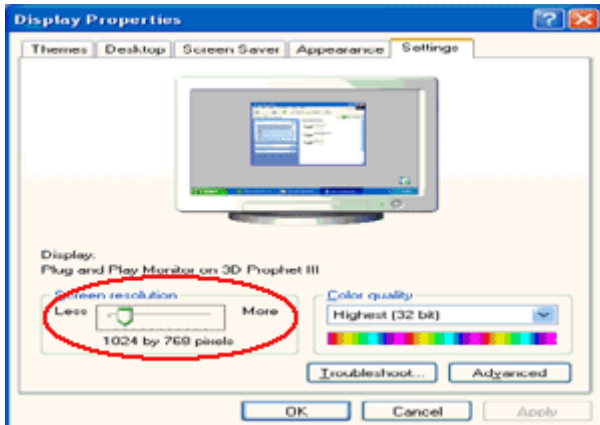


5 Double click **DISPLAY**.



6 Click **SETTINGS**.

7 Set the resolution **SLIDE-BAR** to Optimal preset resolution.



## Windows ME/2000

For Windows ME/2000:

1 Click **START**.

2 Click **SETTINGS**.

3 Click **CONTROL PANEL**.

4 Double click **DISPLAY**.

5 Click **SETTINGS**.

6 Set the resolution **SLIDE-BAR** to Optimal preset resolution

..



# Hotkeys



1	ECO / DCR / Volume -
2	4:3 / wide / Volume +
3	Source / Auto / Exit
4	Menu / Enter
5	Power

## Power

Press the Power button to turn on/off the monitor.

## Eco (DCR)/ -

Press the Eco key continuously to select the Eco mode of brightness and DCR on when there is no OSD. ( Eco mode hot key may not be available in all models).

## Volume

When there is no OSD, Press Volume button to active volume adjustment bar, Press - or + to adjust volume (Only for the models with speakers)

## 4:3 or Wide / +

When there is no OSD, press + continuously to change 4:3 or wide image ratio. (If the product screen size is 4:3 or input signal resolution is wide format, the hot key is disable to adjust. )

## Auto / Exit

When there is no OSD, press Auto / Exit button continuously to do auto configure. (For the models with one input)

When there is no OSD, press Auto / Exit button continuously about 3 second to do auto configure. (Only for the models with dual or more inputs)

## Source hot key

When the OSD is closed, press Source button will be Source hot key function. Press Source button continuously to select the input source showed in the message bar , press Menu/Enter button to change to the source selected.

(Only for the models with dual or more inputs).

# OSD Setting

Basic and simple instruction on the control keys.



- 1) Press the **MENU-button** to activate the OSD window.
- 2) Press **- or +** to navigate through the functions. Once the desired function is highlighted, press the **MENU-button** to activate it. Press **- or +** to navigate through the sub-menu functions. Once the desired function is highlighted, press **MENU-button** to activate it.
- 3) Press **- or +** to change the settings of the selected function. Press **AUTO** to exit. If you want to adjust any other function, repeat steps 2-3.
- 4) OSD Lock Function: To lock the OSD, press and hold the **MENU button** while the monitor is off and then press **power button** to turn the monitor on. To un-lock the OSD - press and hold the **MENU button** while the monitor is off and then press **power button** to turn the monitor on.

## Notes:

- 1 If the product has only one signal input, the item of "Input Select" is disable to adjust.
- 2 If the product screen size is 4:3 or input signal resolution is wide format, the item of "Image Ratio" is disable to adjust.
- 3 One of DCR, Color Boost, and Picture Boost functions is active, the other two function is turned off accordingly.

## Luminance











1 Press **MENU** (Menu) to display menu.

2 Press **-** or **+** to select  (Luminance), and press **MENU** to enter.

3 Press **-** or **+** to select submenu, and press **MENU** to enter.


4 Press **-** or **+** to adjust.


5 Press **AUTO** to exit.

	Brightness	0-100		Backlight Adjustment
	Contrast	0-100		Contrast from Digital-register.
	Eco mode	Standard		Standard Mode
		Text		Text Mode
		Internet		Internet Mode
		Game		Game Mode
		Movie		Movie Mode
		Sports		Sports Mode
	Gamma	Gamma1		Adjust to Gamma1
		Gamma2		Adjust to Gamma 2
		Gamma3		Adjust to Gamma 3
	DCR	Off		Disable dynamic contrast ratio
		On		Enable dynamic contrast ratio
	Overdrive (Optional)	Strong		Adjust the response time
		Medium		
Weak				
Off				

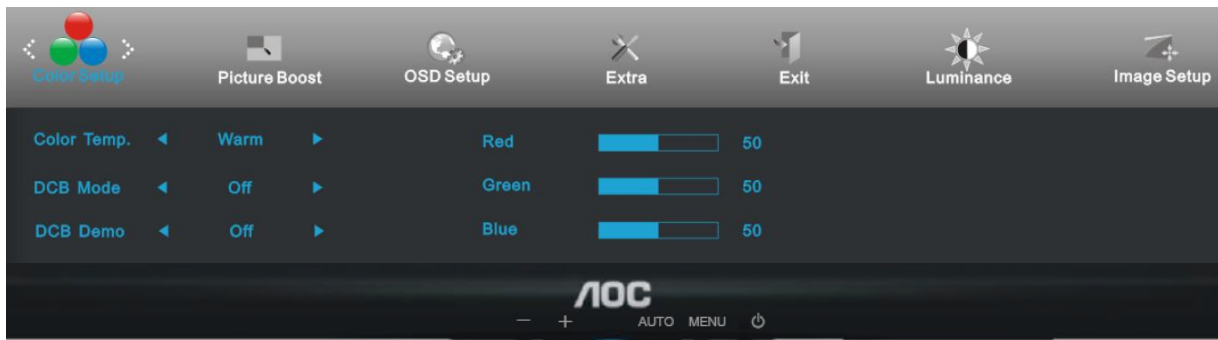
## Image Setup





- 1 Press **MENU** (Menu) to display menu.
- 2 Press **-** or **+** to select  (Image Setup), and press **MENU** to enter.
- 3 Press **-** or **+** to select submenu, and press **MENU** to enter.
- 4 Press **-** or **+** to adjust.
- 5 Press **AUTO** to exit.

	Clock	0-100	Adjust picture Clock to reduce Vertical-Line noise.
	Phase	0-100	Adjust Picture Phase to reduce Horizontal-Line noise
	Sharpness	0-100	Adjust picture sharpness
	H.Position	0-100	Adjust the horizontal position of the picture.
	V.Position	0-100	Adjust the vertical position of the picture.

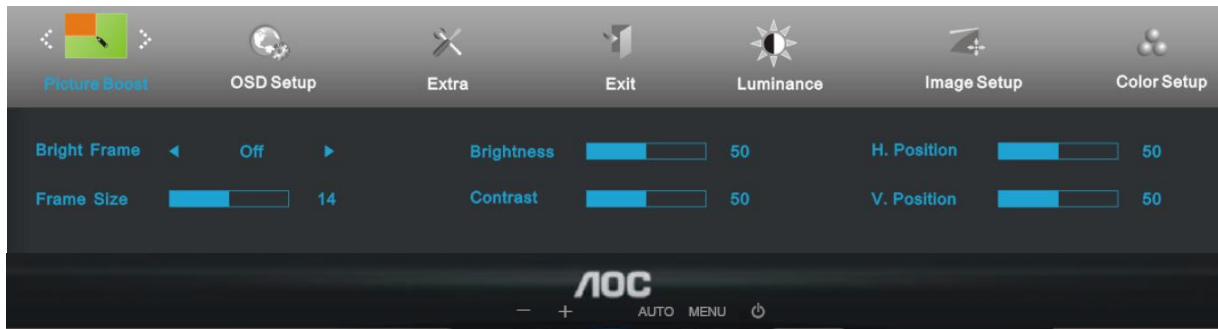
## Color Setup





- 1 Press **MENU** (Menu) to display menu.
- 2 Press **-** or **+** to select  (Color Setup), and press **MENU** to enter.
- 3 Press **-** or **+** to select submenu, and press **MENU** to enter.
- 4 Press **-** or **+** to adjust.
- 5 Press **AUTO** to exit.

	Color setup.	Warm		Recall Warm Color Temperature from EEPROM.
		Normal		Recall Normal Color Temperature from EEPROM.
		Cool		Recall Cool Color Temperature from EEPROM.
		sRGB		Recall sRGB Color Temperature from EEPROM.
	User	Red		Red Gain from Digital-register
		Green		Green Gain Digital-register.
		Blue		Blue Gain from Digital-register
	DCB Mode	Full Enhance	on or off	Disable or Enable Full Enhance Mode
		Nature Skin	on or off	Disable or Enable Nature Skin Mode
		Green Field	on or off	Disable or Enable Green Field Mode
		Sky-blue	on or off	Disable or Enable Sky-blue Mode
AutoDetect		on or off	Disable or Enable AutoDetect Mode	
DCB Demo		On or off	Disable or Enable Demo	

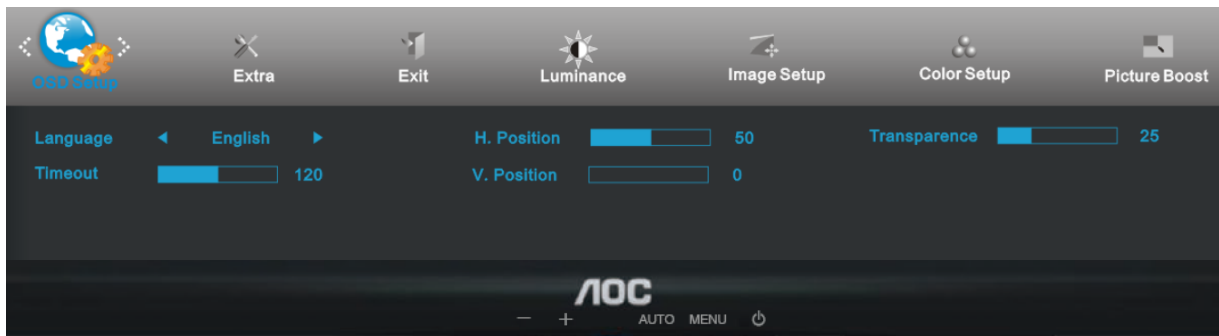
## Picture Boost





- 1 Press **MENU** (Menu) to display menu.
- 2 Press **-** or **+** to select  (Picture Boost), and press **MENU** to enter.
- 3 Press **-** or **+** to select submenu, and press **MENU** to enter.
- 4 Press **-** or **+** to adjust.
- 5 Press **AUTO** to exit.

	Frame Size	14-100	Adjust Frame Size
	Brightness	0-100	Adjust Frame Brightness
	Contrast	0-100	Adjust Frame Contrast
	H. position	0-100	Adjust Frame horizontal Position
	V.position	0-100	Adjust Frame vertical Position
	Bright Frame	on or off	Disable or Enable Bright Frame

## OSD Setup

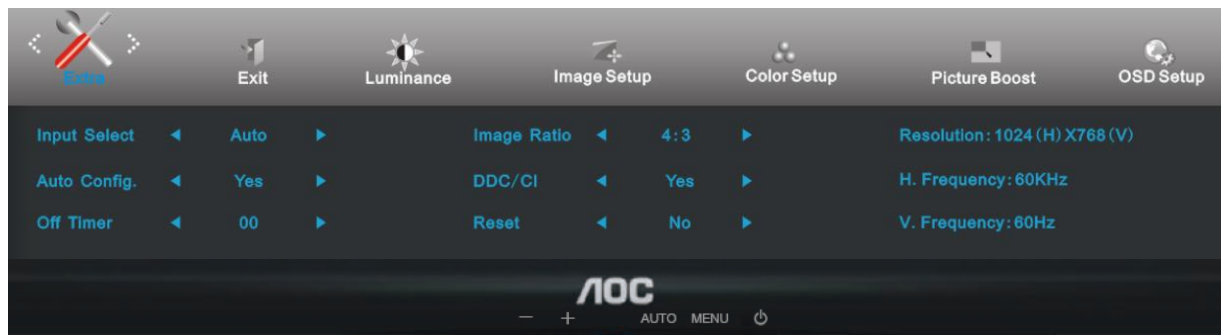



- 1 Press **MENU** (Menu) to display menu.
- 2 Press **-** or **+** to select  (OSD Setup), and press **MENU** to enter.
- 3 Press **-** or **+** to select submenu, and press **MENU** to enter.
- 4 Press **-** or **+** to adjust.
- 5 Press **AUTO** to exit.


	H.Position	0-100	Adjust the horizontal position of OSD
	V.Position	0-100	Adjust the vertical position of OSD
	Timeout	5-120	Adjust the OSD Timeout
	Transparence	0-100	Adjust the transparence of OSD
	Language		Select the OSD language



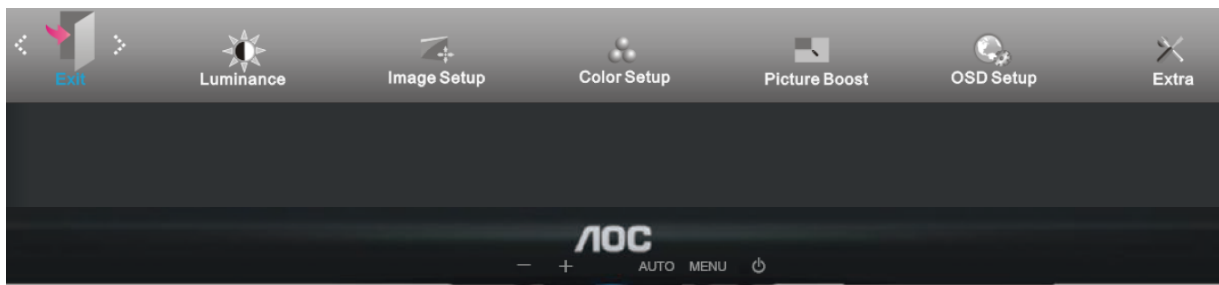
## Extra





- 1 Press **MENU** (Menu) to display menu.
- 2 Press **-** or **+** to select  (Extra), and press **MENU** to enter.
- 3 Press **-** or **+** to select submenu, and press **MENU** to enter.
- 4 Press **-** or **+** to adjust.
- 5 Press **AUTO** to exit.

	Input Select	Auto (For the models with dual or more inputs)	Select to Auto Detect input signal
		D-SUB	Select Analog Signal Source as Input
		DVI (available for selected models)	Select DVI Sinal Source as Input
		HDMI(available for selected models)	Select HDMI Sinal Source as Input
	Auto Config	yes or no	Auto adjust the picture to default.
	Off timer	0-24hrs	Select DC off time.
	Image Ratio	wide or 4:3	Select wide or 4:3 format for display.
	DDC-CI	yes or no	Turn ON/OFF DDC-CI Support.
	Reset	yes or no	Reset the menu to default.
Information		Show the information of the main image and sub-image source.	

## Exit



- 1 Press **MENU** (Menu) to display menu.
- 2 Press **-** or **+** to select  (Exit), and press **MENU** to enter.
- 3 Press **AUTO** to exit

	Exit		Exit the main OSD
---	------	--	-------------------

# LED Indicator

## Status

## LED Color

Full Power Mode

Green or Blue



Active-off Mode

Orange or red



# Driver

## Monitor Driver

### Windows 2000

1. Start Windows® 2000
  2. Click on the 'Start' button, point to 'Settings', and then click on 'Control Panel'.
  3. Double click on the 'Display' Icon.
  4. Select the 'Settings' tab then click on 'Advanced...'
  5. Select 'Monitor'
    - If the 'Properties' button is inactive, it means your monitor is properly configured. Please stop installation.
    - If the 'Properties' button is active. Click on 'Properties' button. Please follow the steps given below.
  6. Click on 'Driver' and then click on 'Update Driver...' then click on the 'Next' button.
  7. Select 'Display a list of the known drivers for this device so that I can choose a specific driver', then click on 'Next' and then click on 'Have disk...'
  8. Click on the 'Browse...' button then select the appropriate drive F: ( CD-ROM Drive).
  9. Click on the 'Open' button, then click on the 'OK' button.
  10. Select your monitor model and click on the 'Next' button.
  11. Click on the 'Finish' button then the 'Close' button.
- If you can see the 'Digital Signature Not Found' window, click on the 'Yes' button.

### Windows ME

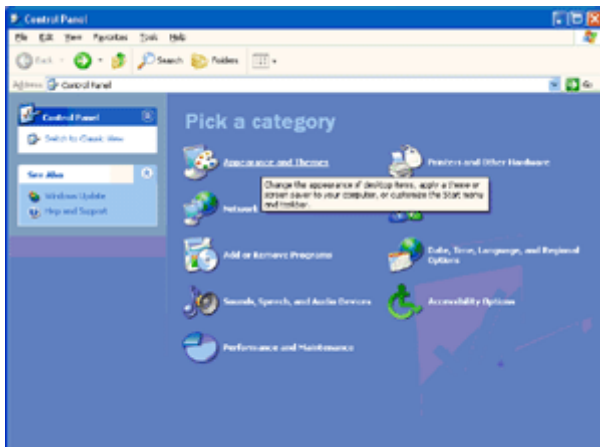
1. Start Windows® Me
2. Click on the 'Start' button, point to 'Settings', and then click on 'Control Panel'.
3. Double click on the 'Display' Icon.
4. Select the 'Settings' tab then click on 'Advanced...'
5. Select the 'Monitor' button, then click on 'Change...' button.
6. Select 'Specify the location of the driver(Advanced)' and click on the 'Next' button.
7. Select 'Display a list of all the drivers in a specific location, so you can choose the driver you want', then click on 'Next' and then click on 'Have Disk...'
8. Click on the 'Browse...' button, select the appropriate drive F: ( CD-ROM Drive) then click on the 'OK' button.
9. Click on the 'OK' button, select your monitor model and click on the 'Next' button.
10. Click on 'Finish' button then the 'Close' button.

# Windows XP

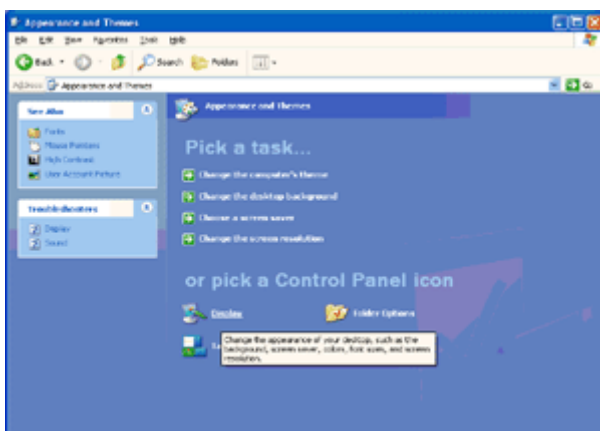
1. Start Windows® XP
2. Click on the 'Start' button and then click on 'Control Panel'.



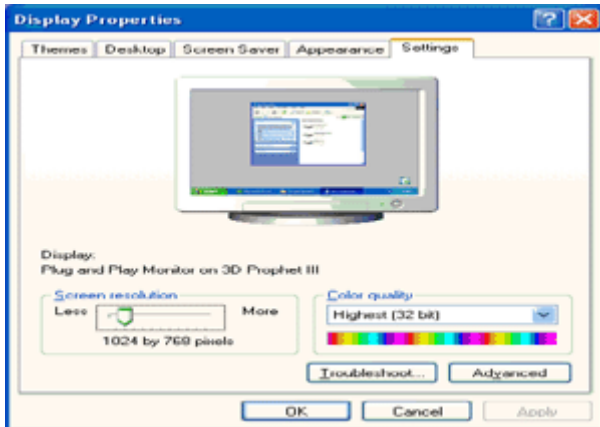
3. Select and click on the category 'Appearance and Themes'



4. Click on the 'Display' Item.



5. Select the 'Settings' tab then click on the 'Advanced' button.

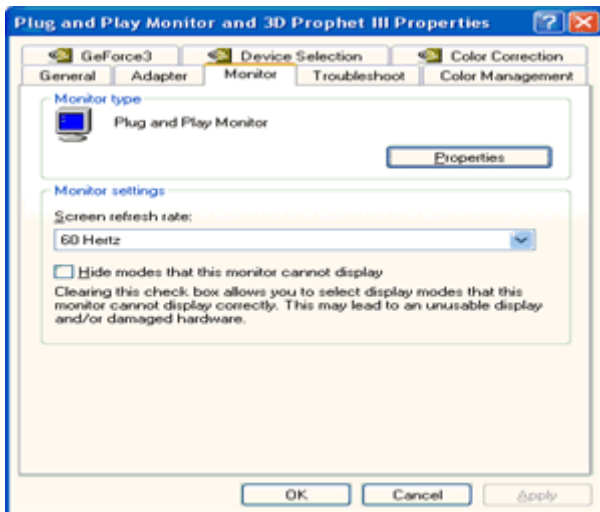


6. Select 'Monitor' tab

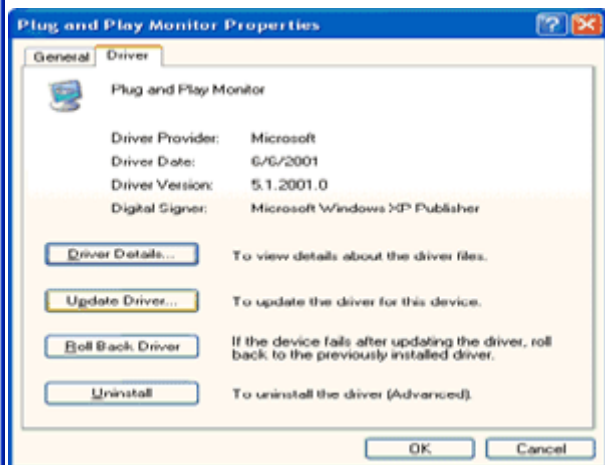
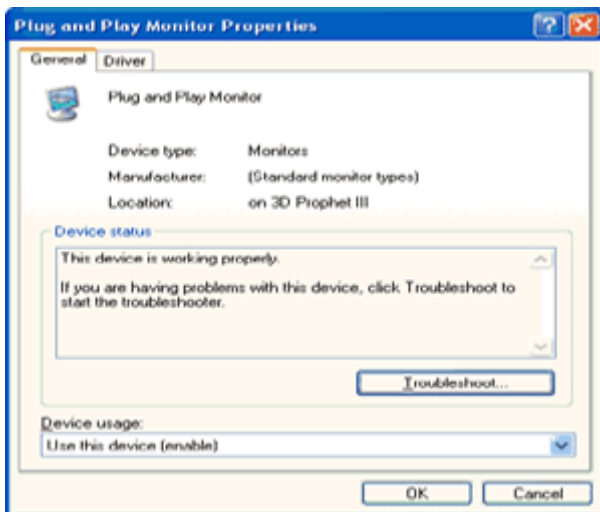
- If the 'Properties' button is inactive, it means your monitor is properly configured. Please stop installation.

- If the 'Properties' button is active, click on 'Properties' button.

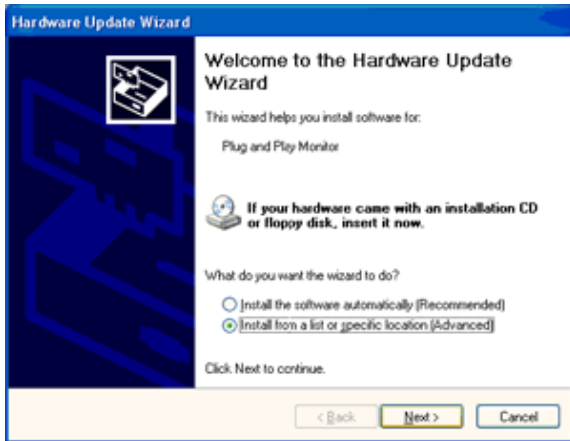
Please follow the steps below.



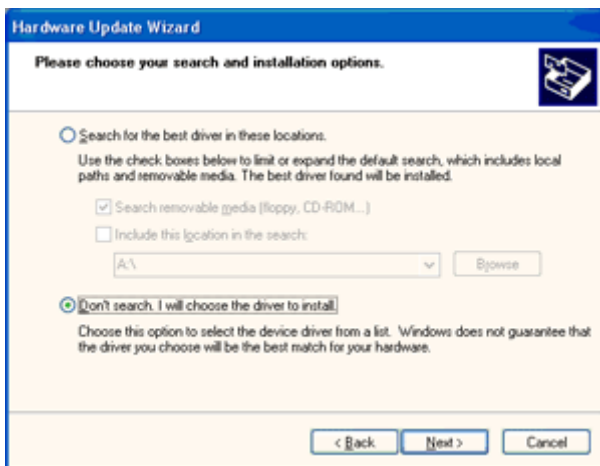
7. Click on the 'Driver' tab and then click on 'Update Driver...' button.



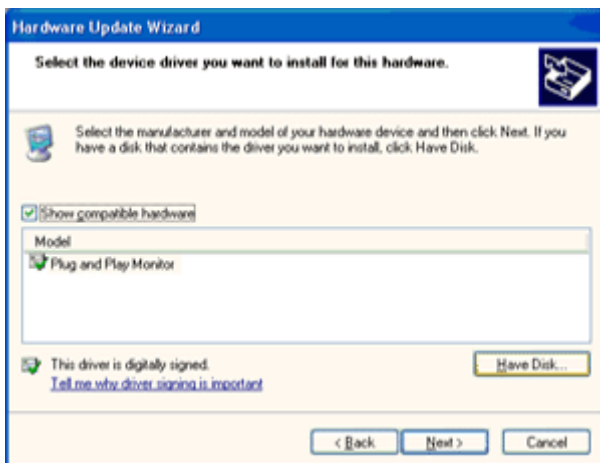
8. Select the 'Install from a list or specific location [advanced]' radio button and then click on the 'Next' button.



9. Select the 'Don't Search. I will choose the driver to install' radio button. Then click on the 'Next' button.



10. Click on the 'Have disk...' button, then click on the 'Browse...' button and then select the appropriate drive F: (CD-ROM Drive).



11. Click on the 'Open' button, then click the 'OK' button.

12. Select your monitor model and click on the 'Next' button.

- If you can see the 'has not passed Windows® Logo testing to verify its compatibility with Windows® XP' message, please click on the 'Continue Anyway' button.

13. Click on the 'Finish' button then the 'Close' button.

14. Click on the 'OK' button and then the 'OK' button again to close the Display Properties dialog box.

# Windows Vista

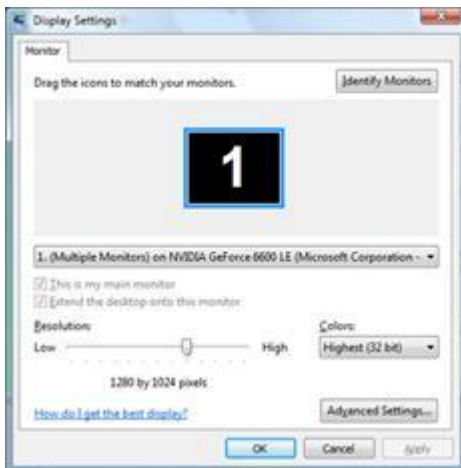
1. Click "Start " and "Control Panel". Then, double-click on "Appearance and Personalization".



2. Click "Personalization" and then "Display Settings".



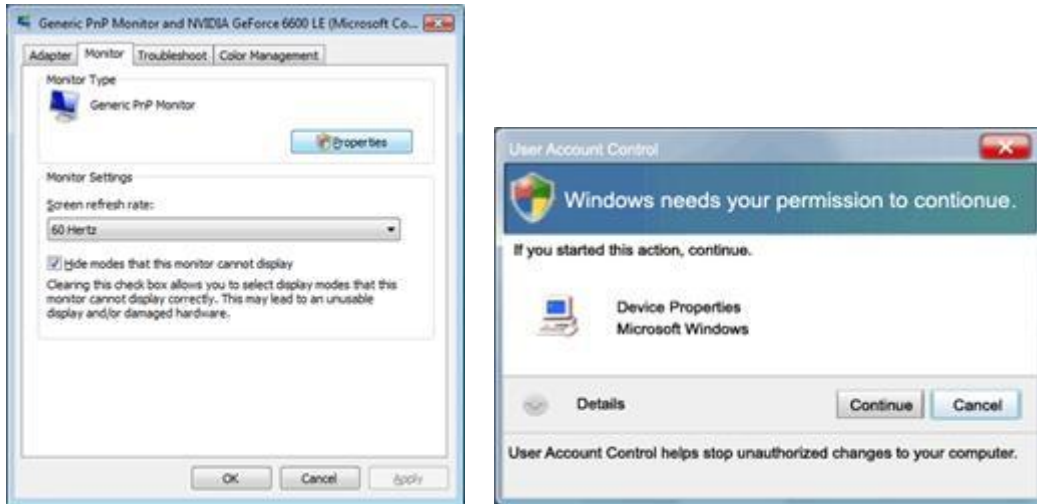
3. Click "Advanced Settings...".



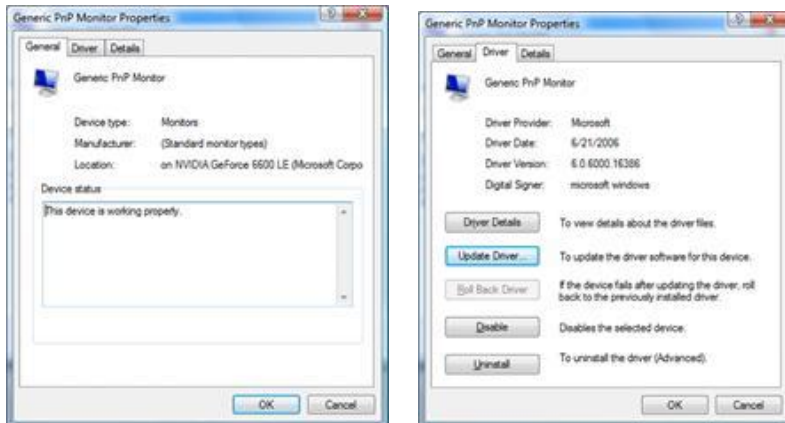


4. Click "Properties" in the "Monitor" tab. If the "Properties" button is deactivated, it means the configuration for your monitor is completed. The monitor can be used as is.

If the message "Windows needs..." is displayed, as shown in the figure below, click "Continue".



5. Click "Update Driver..." in the "Driver" tab.



6. Check the "Browse my computer for driver software" checkbox and click "Let me pick from a list of device drivers on my computer".



7. Click on the 'Have disk...' button, then click on the 'Browse...' button and then select the appropriate drive F:\Driver (CD-ROM Drive).

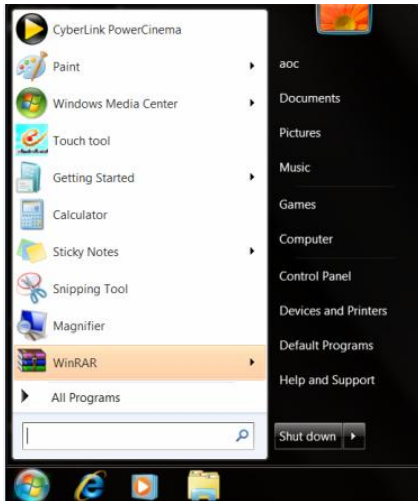
8. Select your monitor model and click on the 'Next' button.

9. Click "Close" → "Close" → "OK" → "OK" on the following screens displayed in sequence.

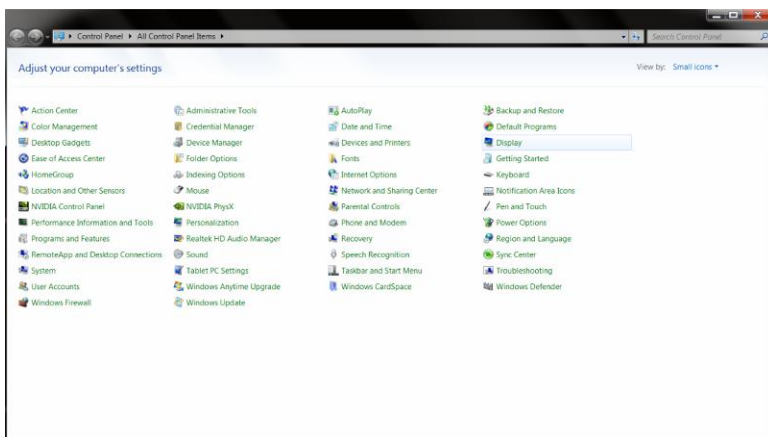
# Windows 7

1. Start Windows® 7

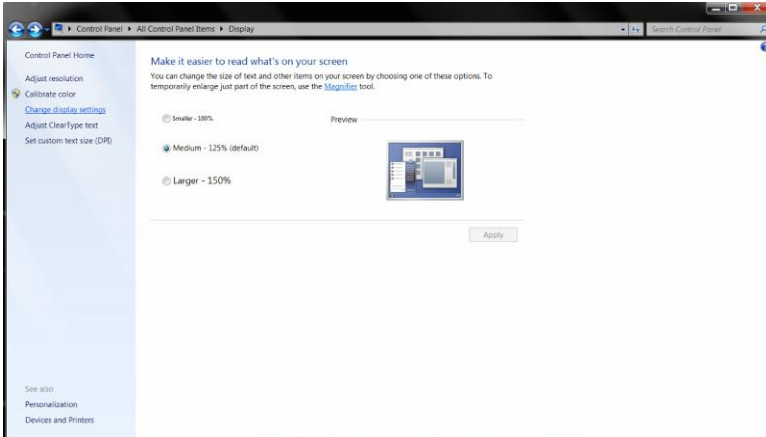
2. Click on the **'Start'** button and then click on **'Control Panel'**.



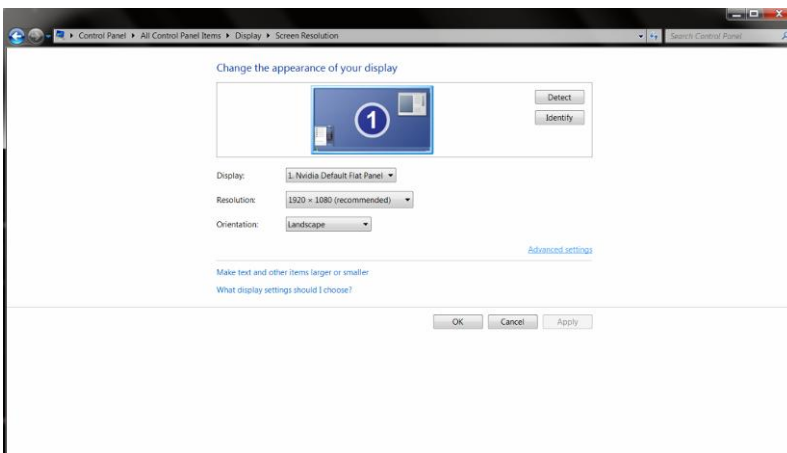
3. Click on the **'Display'** icon.



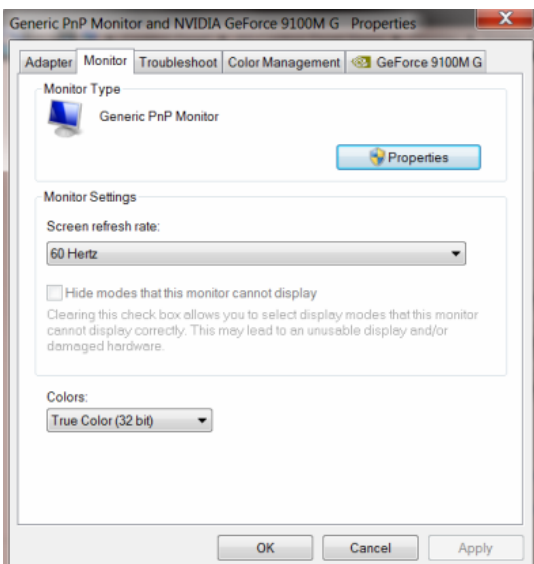
4. Click on the “Change display settings” button.



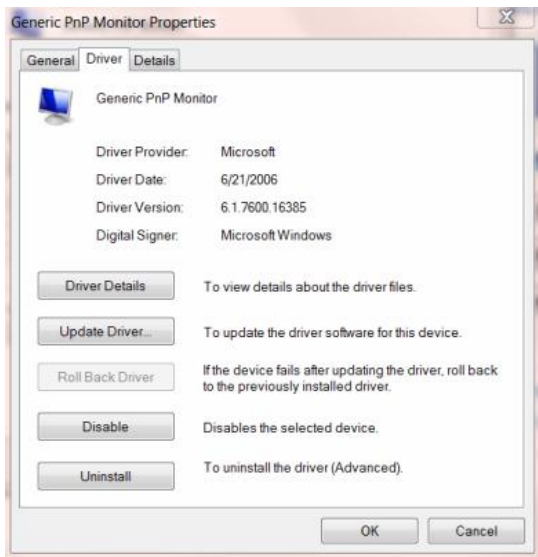
5. Click the “Advanced Settings” button.



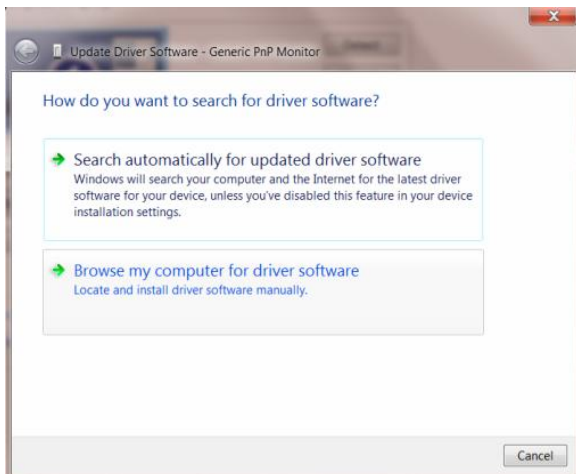
6. Click the “Monitor” tab and then click the “Properties” button.



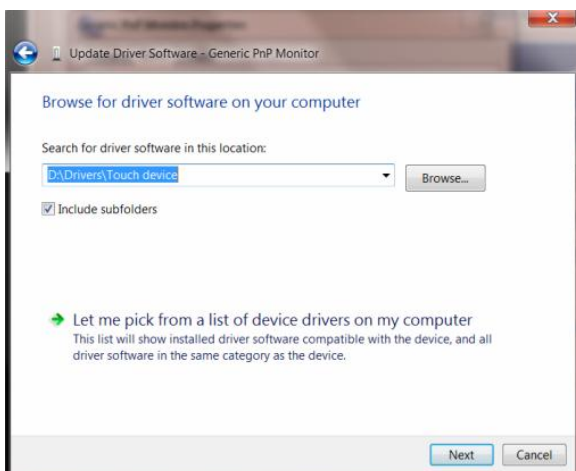
7. Click the **“Driver”** tab.



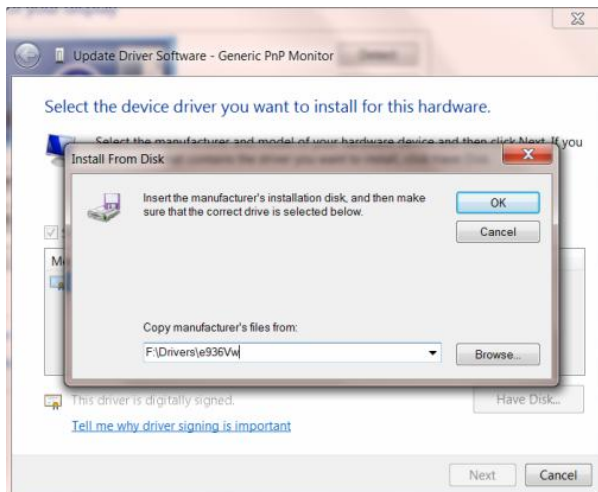
8. Open the "Update Driver Software-Generic PnP Monitor" window by clicking on **“Update Driver...”** and then click the **“Browse my computer for driver software”** button.



9. Select **“Let me pick from a list of device drivers on my computer”**.



10. Click the **“Have Disk”** button. Click on the **“Browse”** button and navigate to the following directory:  
X:\Driver\module name (where X is the drive letter designator for the CD-ROM drive).



11. Select the **“xxx.inf”** file and click the **“Open”** button. Click the **“OK”** button.

12. Select your monitor model and click the **“Next”** button. The files will be copied from the CD to your hard disk drive.

13. Close all open windows and remove the CD.

14. Restart the system. The system will automatically select the maximum refresh rate and corresponding Color Matching Profiles.

## Windows 8

1. Start Windows® 8
2. Right click and click **All apps** at the bottom-right of the screen.
3. Set the **“View by”** to **“Large icons”** or **“Small icons”**.
4. Click on the **“Display”** icon.
5. Click on the **“Change display settings”** button.
6. Click the **“Advanced Settings”** button.
7. Click the **“Monitor”** tab and then click the **“Properties”** button.
8. Click the **“Driver”** tab.
9. Open the **“Update Driver Software-Generic PnP Monitor”** window by clicking on **“Update Driver...”** and then click the **“Browse my computer for driver software”** button.
10. Select **“Let me pick from a list of device drivers on my computer”**.
11. Click the **“Have Disk”** button. Click on the **“Browse”** button and navigate to the following directory:  
X:\Driver\module name (where X is the drive letter designator for the CD-ROM drive).
12. Select the **“xxx.inf”** file and click the **“Open”** button. Click the **“OK”** button.
13. Select your monitor model and click the **“Next”** button. The files will be copied from the CD to your hard disk drive.
14. Close all open windows and remove the CD.

Restart the system. The system will automatically select the maximum refresh rate and corresponding Color Matching Profiles

# i-Menu



Welcome to "i-Menu" software by AOC. i-Menu makes it easy to adjust your monitor display setting by using on screen menus instead of the OSD button on the monitor. To complete installation, please follow the installation guide.



## e-Saver

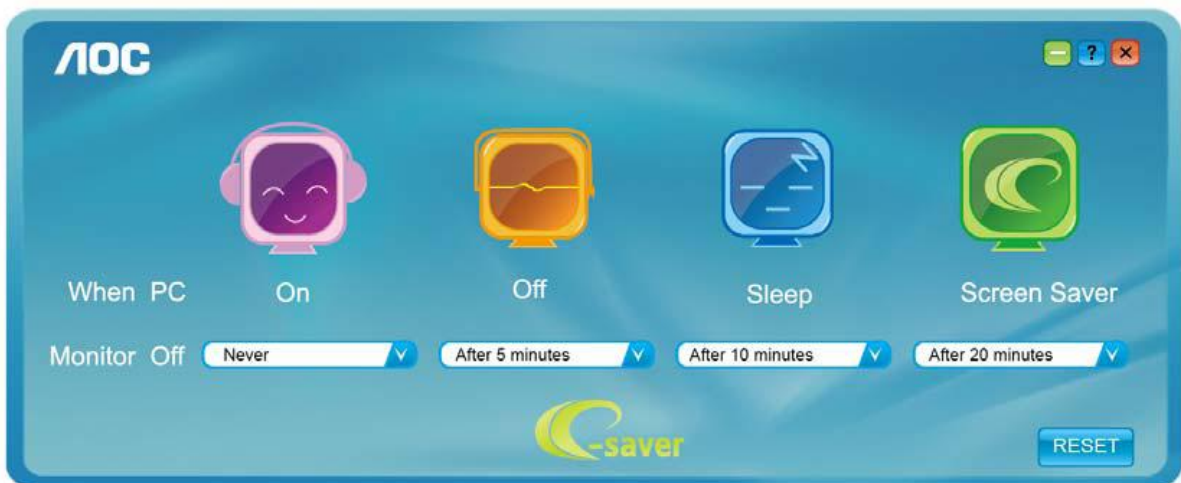


Welcome to use AOC e-Saver monitor power management software! The AOC e-Saver features Smart Shutdown functions for your monitors, allows your monitor to timely shutdown when PC unit is at any status (On, Off, Sleep or Screen Saver); the actual shutdown time depends on your preferences (see example below).

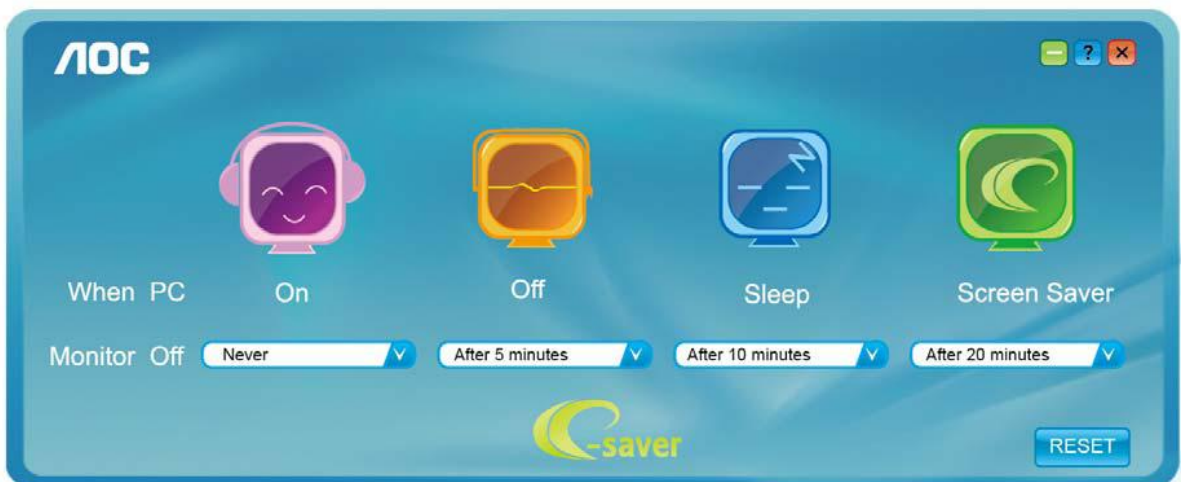
Please click on "driver/e-Saver/setup.exe" to start installing the e-Saver software, follow the install wizard to complete software installation.

Under each of the four PC status, you may choose from the pull-down menu the desired time (in minutes) for your monitor to automatically shutdown. The example above illustrated:

- 1) The monitor will never shutdown when the PC is powered on.
- 2) The monitor will automatically shutdown 5 minutes after the PC is powered off.
- 3) The monitor will automatically shutdown 10 minutes after the PC is in sleep/stand-by mode.
- 4) The monitor will automatically shutdown 20 minutes after the screen saver appears.



You can click "RESET" to set the e-Saver to its default settings like below.







# Screen+



Welcome to "Screen+" software by AOC, Screen+ software is a desktop screen splitting tool, it splits the desktop into different panes, each pane displays a different window. You only need to drag the window to a corresponding pane, when you want to access it. It supports multiple monitor display to make your task easier. Please follow the installation software to install it.



# Troubleshoot

Problem & Question	Possible Solutions
<b>Power LED Is Not ON</b>	Make sure the power button is ON and the Power Cord is properly connected to a grounded power outlet and to the monitor.
<b>No images on the screen</b>	<ul style="list-style-type: none"> <li>• Is the power cord connected properly? Check the power cord connection and power supply.</li> <li>• Is the cable connected correctly? (Connected using the D-sub cable) Check the DB-15 cable connection. (Connected using the DVI cable) Check the DVI cable connection. * DVI input is not available on every model. (Connected using the HDMI cable) Check the HDMI cable connection. * HDMI input is not available on every model.</li> <li>• If the power is on, reboot the computer to see the initial screen (the login screen), which can be seen. If the initial screen (the login screen) appears, boot the computer in the applicable mode (the safe mode for Windows ME/XP/2000) and then change the frequency of the video card. (Refer to the Setting the Optimal Resolution) If the initial screen (the login screen) does not appear, contact the Service Center or your dealer.</li> <li>• Can you see "Input Not Supported" on the screen? You can see this message when the signal from the video card exceeds the maximum resolution and frequency that the monitor can handle properly. Adjust the maximum resolution and frequency that the monitor can handle properly.</li> <li>• Make sure the AOC Monitor Drivers are installed.</li> </ul>
<b>Picture Is Fuzzy &amp; Has Ghosting Shadowing Problem</b>	<p>Adjust the Contrast and Brightness Controls.</p> <p>Press to auto adjust.</p> <p>Make sure you are not using an extension cable or switch box. We recommend plugging the monitor directly to the video card output connector on the back .</p>

<p><b>Picture Bounces, Flickers Or Wave Pattern Appears In The Picture</b></p>	<p>Move electrical devices that may cause electrical interference as far away from the monitor as possible.</p> <p>Use the maximum refresh rate your monitor is capable of at the resolution your are using.</p>
<p><b>Monitor Is Stuck In Active Off-Mode"</b></p>	<p>The Computer Power Switch should be in the ON position.</p> <p>The Computer Video Card should be snugly fitted in its slot.</p> <p>Make sure the monitor's video cable is properly connected to the computer.</p> <p>Inspect the monitor's video cable and make sure no pin is bent.</p> <p>Make sure your computer is operational by hitting the CAPS LOCK key on the keyboard while observing the CAPS LOCK LED. The LED should either turn ON or OFF after hitting the CAPS LOCK key.</p>
<p><b>Missing one of the primary colors (RED, GREEN, or BLUE)</b></p>	<p>Inspect the monitor's video cable and make sure that no pin is damaged.</p> <p>Make sure the monitor's video cable is properly connected to the computer.</p>
<p><b>Screen image is not centered or sized properly</b></p>	<p>Adjust H-Position and V-Position or press hot-key (AUTO).</p>
<p><b>Picture has color defects (white does not look white)</b></p>	<p>Adjust RGB color or select desired color temperature.</p>
<p><b>Horizontal or vertical disturbances on the screen</b></p>	<p>Use Windows 95/98/2000/ME/XP shut-down mode Adjust CLOCK and FOCUS.</p> <p>Press to auto-adjust.</p>

# Specification

## General Specification

**N950Sw/e950Swda / e950Swdak/ e950Swa/ e950Sw/ e950Swn/ E950SWDAN**

Panel	Model name	<b>N950Sw(CCFL)/e950Swda / e950Swdak/ e950Swa/ e950Sw/ e950Swn/ E950SWDAN</b>
	Driving system	TFT Color LCD
	Viewable Image Size	47cm diagonal
	Pixel pitch	0.3mm(H)X0.3mm(V)
	Video	R, G, B Analog Interface
	Video	R, G, B Analog Interface & Digital Interface ( <b>e950Swda / e950Swdak/ E950SWDAN</b> )
	Separate Sync.	H/V TTL
	Display Color	16.7M Colors
	Dot Clock	85.5MHz
Resolution	Horizontal scan range	30 kHz - 60 kHz
	Horizontal scan Size(Maximum)	409.8mm
	Vertical scan range	50 Hz - 76 Hz
	Vertical scan Size(Maximum)	230.4mm
	Optimal preset resolution	1366x 768 (60 Hz)
	Plug & Play	VESA DDC2B、DDC/CI
	Input Connector	D-Sub 15pin; DVI 24pin ( <b>e950Swda/e950Swdak/ E950SWDAN</b> )
	Input Connector	D-Sub 15pin ( <b>N950Sw/e950Swa/e950Sw/e950Swn</b> )
	Input Video Signal	Analog: 0.7Vp-p(standard), 75 OHM, TMDS ( <b>e950Swda/e950Swdak/ E950SWDAN</b> )
	Input Video Signal	Analog: 0.7Vp-p(standard), 75 OHM
	Power Source	100-240V~, 50/60Hz
	Power Consumption	Active: 20 W (typical)
		Standby 0.5 W
Off timer	0-24 hrs	
Speakers	2WX2 ( <b>e950Swda/e950Swdak/e950Swa/E950SWDAN</b> )	
Physical Characteristics	Connector Type	15-pin Mini D-Sub ; DVI-D ( <b>e950Swda/e950Swdak/E950SWDAN</b> )
	Connector Type	15-pin Mini D-Sub ( <b>N950Sw/e950Swa/e950Sw/e950Swn</b> )
	Signal Cable Type	Detachable

Environmental	Temperature:	
	Operating	0° to 40°
	Non-Operating	-25° to 55°
	Humidity:	
	Operating	10% to 85% (non-condensing)
	Non-Operating	5% to 93% (non-condensing)

### e950S /e950Sn/e950Snk

Panel	Model name	<b>e950S /e950Sn/e950Snk</b>
	Driving system	TFT Color LCD
	Viewable Image Size	48.1cm diagonal
	Pixel pitch	0.2835mm(H)X0.2835mm(V)
	Video	R, G, B Analog Interface
	Separate Sync.	H/V TTL
	Display Color	16.7M Colors
	Dot Clock	88.75MHz
Resolution	Horizontal scan range	30 kHz - 60 kHz
	Horizontal scan Size(Maximum)	408.24mm
	Vertical scan range	50 Hz - 76 Hz
	Vertical scan Size(Maximum)	255.15mm
	Optimal preset resolution	1440x 900(60 Hz)
	Plug & Play	VESA DDC2B、DDC/CI
	Input Connector	D-Sub 15pin
	Input Video Signal	Analog: 0.7Vp-p(standard), 75 OHM
	Power Source	100-240V~, 50/60Hz
	Power Consumption	Active: 20 W (typical)
		Standby 0.5 W
Off timer	0-24 hrs	
Physical Characteristics	Connector Type	15-pin Mini D-Sub
	Signal Cable Type	Detachable
Environmental	Temperature:	
	Operating	0° to 40°
	Non-Operating	-25° to 55°
	Humidity:	
	Operating	10% to 85% (non-condensing)
	Non-Operating	5% to 93% (non-condensing)

## E2050Sw /E2050SwD/ E2050SwDA

Panel	Model name	<b>E2050Sw/E2050SwD/E2050SwDA</b>
	Driving system	TFT Color LCD
	Viewable Image Size	49.5cm diagonal
	Pixel pitch	0.27mm(H)X0.27mm(V)
	Video	R, G, B Analog Interface ( <b>E2050Sw</b> )
	Video	R, G, B Analog Interface & Digital Interface
	Separate Sync.	H/V TTL
	Display Color	16.7M Colors
	Dot Clock	140 MHz
Resolution	Horizontal scan range	30 kHz - 83 kHz
	Horizontal scan Size(Maximum)	432.0mm
	Vertical scan range	50 Hz - 76 Hz
	Vertical scan Size(Maximum)	239.76mm
	Optimal preset resolution	1600x 900 (60 Hz)
	Plug & Play	VESA DDC2B、DDC/CI
	Input Connector	D-Sub 15pin ( <b>E2050Sw</b> )
	Input Connector	D-Sub 15pin, DVI 24pin
	Input Video Signal	Analog: 0.7Vp-p(standard), 75 OHM ( <b>E2050Sw</b> )
	Input Video Signal	Analog: 0.7Vp-p(standard), 75 OHM, TMDS
	Power Source	100-240V~, 50/60Hz
	Power Consumption	Active: 20 W (typical)
		Standby 0.5 W
	Off timer	0-24 hrs
Speakers	2WX2( <b>E2050SwDA</b> )	
Physical Characteristics	Connector Type	15-pin Mini D-Sub ( <b>E2050Sw</b> )
	Connector Type	15-pin Mini D-Sub,DVI-D
	Signal Cable Type	Detachable
Environmental	Temperature:	
	Operating	0° to 40°
	Non-Operating	-25° to 55°
	Humidity:	
	Operating	10% to 85% (non-condensing)
	Non-Operating	5% to 93% (non-condensing)

**e2050Sn / e2050Snk/ e2050Sa/ e2050S/ e2050Sda/ e2050Sd/ e2050Sdan**

Panel	Model name	<b>e2050Sn / e2050Snk/ e2050Sa/ e2050S/ e2050Sda/ e2050Sd/ e2050Sdan</b>
	Driving system	TFT Color LCD
	Viewable Image Size	50.8cm diagonal
	Pixel pitch	0.2768mm(H)X0.2768mm(V)
	Video	R, G, B Analog Interface
	Video	R, G, B Analog Interface & Digital Interface ( <b>e2050Sda/e2050Sd/e2050Sdan</b> )
	Separate Sync.	H/V TTL
	Display Color	16.7M Colors
	Dot Clock	108 MHz
Resolution	Horizontal scan range	30 kHz - 83 kHz
	Horizontal scan Size(Maximum)	442.8mm
	Vertical scan range	50 Hz - 76 Hz
	Vertical scan Size(Maximum)	249.075mm
	Optimal preset resolution	1600x 900 (60 Hz)
	Plug & Play	VESA DDC2B、DDC/CI
	Input Connector	D-Sub 15pin
	Input Connector	D-Sub 15pin, DVI 24pin ( <b>e2050Sda/ e2050Sd/ e2050Sdan</b> )
	Input Video Signal	Analog: 0.7Vp-p(standard), 75 OHM
	Input Video Signal	Analog: 0.7Vp-p(standard), 75 OHM, TMDS ( <b>e2050Sda/ e2050Sd/ e2050Sdan</b> )
	Power Source	100-240V~, 50/60Hz
	Power Consumption	Active: 20 W (typical)
		Active: 22 W (typical) ( <b>e2050Sa/ e2050Sda/e2050Sdan</b> )
Standby 0.5 W		
Off timer	0-24 hrs	
Speakers	2WX2( <b>e2050Sa/ e2050Sda/e2050Sdan</b> )	
Physical Characteristics	Connector Type	15-pin Mini D-Sub
	Connector Type	15-pin Mini D-Sub,DVI-D ( <b>e2050Sda/ e2050Sd/e2050Sdan</b> )
	Signal Cable Type	Detachable
Environmental	Temperature:	
	Operating	0° to 40°
	Non-Operating	-25° to 55°
	Humidity:	
	Operating	10% to 85% (non-condensing)
Non-Operating	5% to 93% (non-condensing)	



**e2250Swn / e2250Swnk/ e2250Swdn / e2250Swdnk/ e2250Swh/ e2250Swda / e2250Swdak/ e2250Swd/ e2250Swa/ e2250Sw/ E2250SWVD**

Panel	Model name	<b>e2250Swn / e2250Swnk/ e2250Swdn / e2250Swdnk/ e2250Swh/ e2250Swda / e2250Swdak/ e2250Swd/ e2250Swa/ e2250Sw/ E2250SWVD</b>
	Driving system	TFT Color LCD
	Viewable Image Size	54.7cm diagonal
	Pixel pitch	0.2482mm(H)X0.2482mm(V)
	Video	R, G, B Analog Interface ( <b>e2250Swn/e2250Swnk/e2250Swa/e2250Sw</b> )
	Video	R, G, B Analog Interface & Digital Interface
	Video	R, G, B Analog Interface & Digital Interface &HDMI ( <b>e2250Swh</b> )
	Separate Sync.	H/V TTL
	Display Color	16.7M Colors
	Dot Clock	148.5 MHz
Resolution	Horizontal scan range	30 kHz - 83 kHz
	Horizontal scan Size(Maximum)	476.64mm
	Vertical scan range	50 Hz - 76 Hz
	Vertical scan Size(Maximum)	268.11mm
	Optimal preset resolution	1920x 1080 (60 Hz)
	Plug & Play	VESA DDC2B、DDC/CI
	Input Connector	D-Sub 15pin( <b>e2250Swn / e2250Swnk/ e2250Swa/ e2250Sw</b> )
	Input Connector	D-Sub 15pin, DVI 24pin
	Input Connector	D-Sub 15pin, DVI 24pin,HDMI( <b>e2250Swh</b> )
	Input Video Signal	Analog: 0.7Vp-p(standard), 75 OHM ( <b>e2250Swn/e2250Swnk/e2250Swa/e2250Sw</b> )
	Input Video Signal	Analog: 0.7Vp-p(standard), 75 OHM, TMDS
	Power Source	100-240V~, 50/60Hz
	Power Consumption	Active: 21 W (typical) ( <b>e2250Swn/e2250Swnk</b> )
		Active: 23 W (typical) ( <b>e2250Swdn/e2250Swdnk/E2250SWVD</b> )
Active: 25 W (typical)		
Standby 0.5 W		
Off timer	0-24 hrs	
Speakers	2WX2 ( <b>e2250Swh/e2250Swda/e2250Swdak/e2250Swa</b> )	
Physical Characteristics	Connector Type	15-pin Mini D-Sub ( <b>e2250Swn/e2250Swnk/e2250Swa/e2250Sw</b> )
	Connector Type	15-pin Mini D-Sub,DVI-D
	Connector Type	15-pin Mini D-Sub,DVI-D,HDMI ( <b>e2250Swh</b> )
	Signal Cable Type	Detachable

Environmental	Temperature:	
	Operating	0° to 40°
	Non-Operating	-25° to 55°
	Humidity:	
	Operating	10% to 85% (non-condensing)
	Non-Operating	5% to 93% (non-condensing)

### e2250Sda/ e2250Sd/ e2250Sh

Panel	Model name	<b>e2250Sda / e2250Sd / e2250Sh</b>
	Driving system	TFT Color LCD
	Viewable Image Size	55.86cm diagonal
	Pixel pitch	0.282mm(H)X0.282mm(V)
	Video	R, G, B Analog Interface&Digital Interface
	Video	R, G, B Analog Interface&Digital Interface&HDMI ( <b>e2250Sh</b> )
	Separate Sync.	H/V TTL
	Display Color	16.7M Colors
	Dot Clock	165 MHz
Resolution	Horizontal scan range	30 kHz - 83 kHz
	Horizontal scan Size(Maximum)	473.76mm
	Vertical scan range	50 Hz - 76 Hz
	Vertical scan Size(Maximum)	296.1mm
	Optimal preset resolution	1680x 1050 (60 Hz)
	Plug & Play	VESA DDC2B、DDC/CI
	Input Connector	D-Sub 15pin, DVI 24pin
	Input Connector	D-Sub 15pin, DVI 24pin,HDMI( <b>e2250Sh</b> )
	Input Video Signal	Analog: 0.7Vp-p(standard), 75 OHM, TMDS
	Power Source	100-240V~, 50/60Hz
	Power Consumption	Active: 25 W (typical)
		Standby 0.5 W
Off timer	0-24 hrs	
Speakers	2WX2 ( <b>e2250Sda/e2250Sh</b> )	
Physical Characteristics	Connector Type	15-pin Mini D-Sub,DVI-D
	Connector Type	15-pin Mini D-Sub,DVI-D,HDMI ( <b>e2250Sh</b> )
	Signal Cable Type	Detachable
Environmental	Temperature:	
	Operating	0° to 40°
	Non-Operating	-25° to 55°
	Humidity:	

Operating	10% to 85% (non-condensing)
Non-Operating	5% to 93% (non-condensing)

### e2350Sa/ e2350Sda / e2350Sd/ e2350Sh / e2350Shk

Panel	Model name	<b>e2350Sa/ e2350Sda / e2350Sd/ e2350Sh / e2350Shk</b>
	Driving system	TFT Color LCD
	Viewable Image Size	58.42cm diagonal
	Pixel pitch	0.265mm(H)X0.265mm(V)
	Video	R, G, B Analog Interface ( <b>e2350Sa</b> )
	Video	R, G, B Analog Interface & Digital Interface ( <b>e2350Sda / e2350Sd</b> )
	Video	R, G, B Analog Interface & Digital Interface & HDMI ( <b>e2350Sh / e2350Shk</b> )
	Separate Sync.	H/V TTL
	Display Color	16.7M Colors
	Dot Clock	148.5 MHz
Resolution	Horizontal scan range	30 kHz - 83 kHz
	Horizontal scan Size(Maximum)	509.184mm
	Vertical scan range	50 Hz - 76 Hz
	Vertical scan Size(Maximum)	286.416mm
	Optimal preset resolution	1920x 1080 (60 Hz)
	Plug & Play	VESA DDC2B、 DDC/CI
	Input Connector	D-Sub 15pin( <b>e2350Sa</b> )
	Input Connector	D-Sub 15pin, DVI 24pin( <b>e2350Sda / e2350Sd</b> )
	Input Connector	D-Sub 15pin, DVI 24pin,HDMI( <b>e2350Sh / e2350Shk</b> )
	Input Video Signal	Analog: 0.7Vp-p(standard), 75 OHM ( <b>e2350Sa</b> )
	Input Video Signal	Analog: 0.7Vp-p(standard), 75 OHM, TMDS
	Power Source	100-240V~, 50/60Hz
	Power Consumption	Active: 31 W (typical) ( <b>e2350Sa</b> )
		Active: 33 W (typical) ( <b>e2350Sda / e2350Sd</b> )
Active: 35 W (typical) ( <b>e2350Sh / e2350Shk</b> )		
Standby 0.5 W		
Off timer	0-24 hrs	
Speakers	2WX2( <b>e2350Sa/ e2350Sda / e2350Sh / e2350Shk</b> )	
Physical Characteristics	Connector Type	15-pin Mini D-Sub ( <b>e2350Sa</b> )
	Connector Type	15-pin Mini D-Sub,DVI-D ( <b>e2350Sda / e2350Sd</b> )
	Connector Type	15-pin Mini D-Sub,DVI-D,HDMI ( <b>e2350Sh / e2350Shk</b> )
	Signal Cable Type	Detachable
	Temperature:	

Environmental	Operating	0° to 40°
	Non-Operating	-25° to 55°
	Humidity:	
	Operating	10% to 85% (non-condensing)
	Non-Operating	5% to 93% (non-condensing)

**e2450Swda / e2450Swdak/ e2450Swd/ e2450Swh / e2450Swhk**

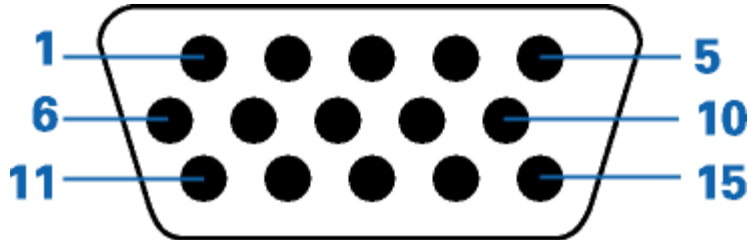
Panel	Model name	<b>e2450Swda / e2450Swdak/ e2450Swd/ e2450Swh / e2450Swhk</b>
	Driving system	TFT Color LCD
	Viewable Image Size	59.8cm diagonal
	Pixel pitch	0.2715mm(H)X0.2715mm(V)
	Video	R, G, B Analog Interface&Digital Interface
	Video	R, G, B Analog Interface&Digital Interface&HDMI ( <b>e2450Swh / e2450Swhk</b> )
	Separate Sync.	H/V TTL
	Display Color	16.7M Colors
	Dot Clock	148.5 MHz
Resolution	Horizontal scan range	30 kHz - 83 kHz
	Horizontal scan Size(Maximum)	521.28mm
	Vertical scan range	50 Hz - 76 Hz
	Vertical scan Size(Maximum)	293.22mm
	Optimal preset resolution	1920x 1080 (60 Hz)
	Plug & Play	VESA DDC2B、DDC/CI
	Input Connector	D-Sub 15pin, DVI 24pin
	Input Connector	D-Sub 15pin, DVI 24pin,HDMI( <b>e2450Swh / e2450Swhk</b> )
	Input Video Signal	Analog: 0.7Vp-p(standard), 75 OHM, TMDS
	Power Source	100-240V~, 50/60Hz
	Power Consumption	Active: 30 W (typical)
		Active: 33 W (typical) ( <b>e2450Swh / e2450Swhk</b> )
		Standby 0.5 W
Off timer	0-24 hrs	
Speakers	2WX2 ( <b>e2450Swda / e2450Swdak/ e2450Swh / e2450Swhk</b> )	
Physical Characteristics	Connector Type	15-pin Mini D-Sub,DVI-D
	Connector Type	15-pin Mini D-Sub,DVI-D,HDMI ( <b>e2450Swh / e2450Swhk</b> )
	Signal Cable Type	Detachable
Environmental	Temperature:	
	Operating	0° to 40°

	Non-Operating	-25° to 55°
	Humidity:	
	Operating	10% to 85% (non-condensing)
	Non-Operating	5% to 93% (non-condensing)

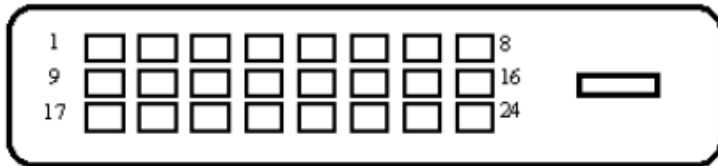
## Preset Display Modes

STAND	RESOLUTION	HORIZONTAL FREQUENCY (KHz)	VERTICAL FREQUENCY (Hz)	Panel Size							
				18.5"	19"	19.5"	20"	21.5"	22"	23"	23.6"
VGA	640 X 480@60Hz	31.469	59.940	✓	✓	✓	✓	✓	✓	✓	✓
	640 X 480@67Hz	35.000	66.667	✓	✓	✓	✓	✓	✓	✓	✓
	640 X 480@72Hz	37.861	72.809	✓	✓	✓	✓	✓	✓	✓	✓
	640 X 480@75Hz	37.500	75.000	✓	✓	✓	✓	✓	✓	✓	✓
DOS MODE	720 X 400@70Hz	31.469	70.087	✓	✓	✓	✓	✓	✓	✓	✓
SVGA	800 X 600@56Hz	35.156	56.250	✓	✓	✓	✓	✓	✓	✓	✓
	800 X 600@60Hz	37.879	60.317	✓	✓	✓	✓	✓	✓	✓	✓
	800 X 600@72Hz	48.077	72.188	✓	✓	✓	✓	✓	✓	✓	✓
	800 X 600@75Hz	46.875	75.000	✓	✓	✓	✓	✓	✓	✓	✓
MAC MODE	832 X 624@75Hz	49.725	74.551	✓	✓	✓	✓	✓	✓	✓	✓
XGA	1024 X 768@60Hz	48.363	60.004	✓	✓	✓	✓	✓	✓	✓	✓
	1024 X 768@70Hz	56.476	70.069	✓	✓	✓	✓	✓	✓	✓	✓
	1024 X 768@75Hz	60.023	75.029	✓	✓	✓	✓	✓	✓	✓	✓
WXGA	1280 X 720@60Hz	45.000	60.000				✓				
VESA-MODE	1280 X 960@60Hz	60.000	60.000						✓	✓	
SXGA	1280 X 1024@60Hz	63.981	60.020		✓	✓		✓	✓	✓	✓
	1280 X 1024@75Hz	79.976	75.025		✓	✓		✓	✓	✓	✓
WXGA	1360 X 768@60Hz	47.712	60.015	✓							
	1366 X 768@60Hz	47.712	59.790	✓							
WXGA+	1440 X 900@60Hz	55.935	59.876		✓			✓	✓	✓	✓
WSXGA	1600 X 900@60Hz	60.000	59.950			✓	✓				
WSXGA+	1680 X 1050@60Hz	65.290	59.950					✓	✓	✓	✓
FHD	1920 X 1080@60Hz	67.500	60.000					✓		✓	✓

## Pin Assignments



Pin Number	15-Pin Side of the Signal Cable
1	Video-Red
2	Video-Green
3	Video-Blue
4	N.C.
5	Detect Cable
6	GND-R
7	GND-G
8	GND-B
9	+5V
10	Ground
11	N.C.
12	DDC-Serial data
13	H-sync
14	V-sync
15	DDC-Serial clock



Pin No.	Signal Name	Pin No.	Signal Name	Pin No.	Signal Name
1	TMDS Data 2-	9	TMDS Data 1-	17	TMDS Data 0-
2	TMDS Data 2+	10	TMDS Data 1+	18	TMDS Data 0+
3	TMDS Data 2/4 Shield	11	TMDS Data 1/3 Shield	19	TMDS Data 0/5 Shield
4	TMDS Data 4-	12	TMDS Data 3-	20	TMDS Data 5-
5	TMDS Data 4+	13	TMDS Data 3+	21	TMDS Data 5+
6	DDC Clock	14	+5V Power	22	TMDS Clock Shield
7	DDC Data	15	Ground(for+5V)	23	TMDS Clock +
8	N.C.	16	Hot Plug Detect	24	TMDS Clock -



Pin No.	Signal Name	Pin No.	Signal Name	Pin No.	Signal Name
1	TMDS Data 2+	9	TMDS Data 0	17	DDC/CEC Ground
2	TMDS Data 2 Shield	10	TMDS Clock +	18	+5V Power
3	TMDS Data 2	11	TMDS Clock Shield	19	Hot Plug Detect
4	TMDS Data 1+	12	TMDS Clock		
5	TMDS Data 1Shield	13	CEC		
6	TMDS Data 1	14	Reserved (N.C. on device)		
7	TMDS Data 0+	15	SCL		
8	TMDS Data 0 Shield	16	SDA		

# Plug and Play

## Plug & Play DDC2B Feature

This monitor is equipped with VESA DDC2B capabilities according to the VESA DDC STANDARD. It allows the monitor to inform the host system of its identity and, depending on the level of DDC used, communicate additional information about its display capabilities.

The DDC2B is a bi-directional data channel based on the I2C protocol. The host can request EDID information over the DDC2B channel.



# Regulation

## FCC Notice

### **FCC Class B Radio Frequency Interference Statement WARNING: (FOR FCC CERTIFIED MODELS)**

NOTE: This equipment has been tested and found to comply with the limits for a Class B digital device, pursuant to Part 15 of the FCC Rules. These limits are designed to provide reasonable protection against harmful interference in a residential installation. This equipment generates, uses and can radiate radio frequency energy, and if not installed and used in accordance with the instructions, may cause harmful interference to radio communications. However, there is no guarantee that interference will not occur in a particular installation. If this equipment does cause harmful interference to radio or television reception, which can be determined by turning the equipment off and on, the user is encouraged to try to correct the interference by one or more of the following measures:

Reorient or relocate the receiving antenna.

Increase the separation between the equipment and receiver.

Connect the equipment into an outlet on a circuit different from that to which the receiver is connected.

Consult the dealer or an experienced radio/TV technician for help.

### **NOTICE :**

The changes or modifications not expressly approved by the party responsible for compliance could void the user's authority to operate the equipment.

Shielded interface cables and AC power cord, if any, must be used in order to comply with the emission limits.

The manufacturer is not responsible for any radio or TV interference caused by unauthorized modification to this equipment. It is the responsibilities of the user to correct such interference. It is the responsibility of the user to correct such interference.

## WEEE Declaration

Disposal of Waste Equipment by Users in Private Household in the European Union.



This symbol on the product or on its packaging indicates that this product must not be disposed of with your other household waste. Instead, it is your responsibility to dispose of your waste equipment by handing it over to a designated collection point for the recycling of waste electrical and electronic equipment. The separate collection and recycling of your waste equipment at the time of disposal will help to conserve natural resources and ensure that it is recycled in a manner that protects human health and the environment. For more information about where you can drop off your waste equipment for recycling, please contact your local city office, your household waste disposal service or the shop where you purchased the product .

## WEEE Declaration for India



This symbol on the product or on its packaging indicates that this product must not be disposed of with your other household waste. Instead it is your responsibility to dispose of your waste equipment by handing it over to a designated collection point for the recycling of waste electrical and electronic equipment. The separate collection and recycling of your waste equipment at the time of disposal will help to conserve natural resources and ensure that it is recycled in a manner that protects human health and the environment.

For more information about where you can drop off your waste equipment for recycling in India please visit the below web link.

[www.aocindia.com/ewaste.php](http://www.aocindia.com/ewaste.php).

## EPA Energy Star



ENERGY STAR® is a U.S. registered mark. As an ENERGY STAR® Partner, AOC International (Europe) BV and Envision Peripherals, Inc. have determined that this product meets the ENERGY STAR® guidelines for energy efficiency.

## EPEAT Declaration



EPEAT is a system to help purchasers in the public and private sectors evaluate, compare and select desktop computers, notebooks and monitors based on their environmental attributes. EPEAT also provides a clear and consistent set of performance criteria for the design of products, and provides an opportunity for manufacturers to secure market recognition for efforts to reduce the environmental impact of its products.

AOC believes in protecting the environment.

With a key concern for the conservation of natural resources, as well as landfill protection, AOC announces the launch of AOC monitor's packaging recycling program. This program is designed to help you discard of your monitor carton and filler materials properly. If a local recycling center is not available, AOC will recycle the packaging material for you, including foam filler and carton. AOC Display solution will only recycle AOC monitor packaging. Please refer to the following website address:

**Only for North and South American, excluding Brazil:**

[http://us.aoc.com/about/environmental\\_impact](http://us.aoc.com/about/environmental_impact)

**For Germany:**

<http://www.aoc-europe.com/en/service/tco.php>

**For Brazil:**

[http://www.aoc.com.br/2007/php/index.php?req=pagina&pgn\\_id=134](http://www.aoc.com.br/2007/php/index.php?req=pagina&pgn_id=134)

# TCO DOCUMENT (Optional)

## Congratulations!

**This product is designed for both you and the planet!**



TCO Development works for sustainable IT - manufacture, use and recycling of IT products reflecting environmental, social and economic responsibility.

TCO Certified is a third party verified program, where every product model is tested by an accredited impartial test laboratory. TCO

Certified represents one of the toughest certifications for ICT products worldwide.

### Some of the Usability features of TCO Certified Displays:

- Visual Ergonomics for image quality is tested to ensure top performance and reduce sight and strain problems. Important parameters are Resolution, Luminance, Contrast, Reflection and Colour characteristics
- Products are tested according to rigorous safety standards at impartial laboratories
- Electric and magnetic fields emissions as low as normal household background levels
- Workload ergonomics to ensure a good physical environment

### Some of the Environmental features of TCO Certified Displays:

- Production facilities have an Environmental Management System (EMAS or ISO 14001)
- Low energy consumption to minimize climate impact
- Restrictions on Chlorinated and Brominated flame retardants, plasticizers, plastics and heavy metals such as cadmium, mercury and lead (RoHS compliance)
- Both product and product packaging is prepared for recycling
- The brand owner offers take-back options

### Corporate Social Responsibility

- The brand owner demonstrates the product is manufactured under working practices that promote good labour relations and working conditions.

The Criteria Document can be downloaded from our web site. The criteria included in this label have been developed by TCO Development in co-operation with scientists, experts, users as well as manufacturers all over the world. Since the end of the 1980s TCO has been involved in influencing the development of IT equipment in a more user and environmentally friendly direction. Our ICT product labeling system began in 1992 and is now requested by users and ICT-manufacturers all over the world.

For more information, please visit  
[www.tcodevelopment.com](http://www.tcodevelopment.com)



# Service

## Warranty Statement for Europe

### LIMITED THREE-YEAR WARRANTY\*

AOC Color Monitors sold within Europe

AOC International (Europe) BV warrants this product to be free from defects in material and workmanship for a period of Three (3) years after the original date of consumer purchase. During this period, AOC International (Europe) BV will, at its option, either repair the defective product with new or rebuilt parts, or replace it with a new or rebuilt product at no charge except as \*stated below. The defective products that are replaced become the property of AOC International (Europe) BV.

If the product appears to be defective, please contact your local dealer or refer to the warranty card when attached to the product.

Deliver the product freight pre-paid, along with the dated proof of purchase, to the AOC Authorized Service Center. If you cannot deliver the product in person:

- Pack it in its original shipping container (or equivalent)
- Put the RMA number on the address label
- Put the RMA number on the shipping carton
- Insure it (or assume the risk of loss/damage during shipment)
- Pay all shipping charges

AOC International (Europe) BV is responsible neither for any damage or loss during inbound transport damage nor to inbound product that was not properly packaged.

AOC International (Europe) BV will pay the return shipping charges within one of the countries specified within this warranty statement. AOC International (Europe) BV is not responsible for any costs associated with the transportation of product across international borders. This includes the international border within the European Union.

\* This limited warranty does not cover any losses or damages that occur as a result of

- Shipping or improper installation or maintenance
- Misuse
- Neglect
- Any cause other than ordinary commercial or industrial application
- Adjustment by non-authorized source
- Repair, modification, or installation of options or parts by anyone other than an AOC Authorized Service Center
- Improper environment
- Excessive or inadequate heating or air conditioning or electrical powers failures, surges, or other irregularities

This limited warranty does not cover any of the product firmware or hardware that you or any third party have

modified or altered; you bear the sole responsibility and liability for any such modification or alteration.

ALL EXPRESS AND IMPLIED WARRANTIES FOR THIS PRODUCT (INCLUDING THE WARRANTIES OF MERCHANTABILITY AND FITNESS FOR A PARTICULAR PURPOSE) ARE LIMITED IN DURATION TO A PERIOD OF THREE (3) YEARS FOR PARTS AND LABOR FROM THE ORIGINAL DATE OF CONSUMER PURCHASE. NO WARRANTIES (EITHER EXPRESSED OR IMPLIED) APPLY AFTER THIS PERIOD.

AOC INTERNATIONAL (EUROPE) BV OBLIGATIONS AND YOUR REMEDIES HEREUNDER ARE SOLELY AND EXCLUSIVELY AS STATED HERE. AOC INTERNATIONAL (EUROPE) BV LIABILITY, WHETHER BASED ON CONTRACT, TORT, WARRANTY, STRICT LIABILITY, OR OTHER THEORY, SHALL NOT EXCEED THE PRICE OF THE INDIVIDUAL UNIT WHOSE DEFECT OR DAMAGE IS THE BASIS OF THE CLAIM. IN NO EVENT SHALL AOC INTERNATIONAL (EUROPE) BV BE LIABLE FOR ANY LOSS OF PROFITS, LOSS OF USE OR FACILITIES OR EQUIPMENT, OR OTHER INDIRECT, INCIDENTAL, OR CONSEQUENTIAL DAMAGE. SOME STATES DO NOT ALLOW THE EXCLUSION OR LIMITATION OF INCIDENTAL OR CONSEQUENTIAL DAMAGES, SO THE ABOVE LIMITATION MAY NOT APPLY TO YOU. ALTHOUGH THIS LIMITED WARRANTY GIVES YOU SPECIFIC LEGAL RIGHTS, YOU MAY HAVE OTHER RIGHTS, WHICH MAY VARY FROM COUNTRY TO COUNTRY. THIS LIMITED WARRANTY IS ONLY VALID FOR PRODUCTS PURCHASED IN THE MEMBER COUNTRIES OF THE EUROPEAN UNION.

Information in this document is subject to change without notice.

For more details, please visit: <http://www.aoc-europe.com/en/service/index.php>

# Warranty Statement for North & South America (excluding Brazil)

## WARRANTY STATEMENT

for AOC Color Monitors

Including those Sold within North America as Specified

Envision Peripherals, Inc. warrants this product to be free from defects in material and workmanship for a period of three (3) years for parts & labor and one (1) year for CRT Tube or LCD Panel after the original date of consumer purchase. During this period, EPI ( EPI is the abbreviation of Envision Peripherals, Inc. ) will, at its option, either repair the defective product with new or rebuilt parts, or replace it with a new or rebuilt product at no charge except as \*stated below. The parts or product that are replaced become the property of EPI.

In the USA to obtain service under this limited warranty, call EPI for the name of the Authorized Service Center closest to your area. Deliver the product freight pre-paid, along with the dated proof of purchase, to the EPI Authorized Service Center. If you cannot deliver the product in person:

- Pack it in its original shipping container (or equivalent)
- Put the RMA number on the address label
- Put the RMA number on the shipping carton
- Insure it (or assume the risk of loss/damage during shipment)
- Pay all shipping charges

EPI is not responsible for damage to inbound product that was not properly packaged.

EPI will pay the return shipment charges within one of the countries specified within this warranty statement. EPI is not responsible for any costs associated with the transportation of product across international borders. This includes the international borders of the countries within this warranty statements.

In the United States and Canada contact your Dealer or EPI Customer Service, RMA Department at the toll free number (888) 662-9888. Or you can request an RMA Number online at [www.aoc.com/na-warranty](http://www.aoc.com/na-warranty).

\* This limited warranty does not cover any losses or damages that occur as a result of:

- Shipping or improper installation or maintenance
- Misuse
- Neglect
- Any cause other than ordinary commercial or industrial application
- Adjustment by non-authorized source
- Repair, modification, or installation of options or parts by anyone other than an EPI Authorized Service Center
- Improper environment
- Excessive or inadequate heating or air conditioning or electrical power failures, surges, or other irregularities

This three-year limited warranty does not cover any of the product's firmware or hardware that you or any third party have modified or altered; you bear the sole responsibility and liability for any such modification or alteration.



ALL EXPRESS AND IMPLIED WARRANTIES FOR THIS PRODUCT (INCLUDING THE WARRANTIES OF MERCHANTABILITY AND FITNESS FOR A PARTICULAR PURPOSE) ARE LIMITED IN DURATION TO A PERIOD OF THREE (3) YEARS FOR PARTS AND LABOR AND ONE (1) YEAR FOR CRT TUBE OR LCD PANEL FROM THE ORIGINAL DATE OF CONSUMER PURCHASE. NO WARRANTIES (EITHER EXPRESSED OR IMPLIED) APPLY AFTER THIS PERIOD. IN THE UNITED STATES OF AMERICA, SOME STATES DO NOT ALLOW LIMITATIONS ON HOW LONG AN IMPLIED WARRANTY LASTS, SO THE ABOVE LIMITATIONS MAY NOT APPLY TO YOU.

EPI OBLIGATIONS AND YOUR REMEDIES HEREUNDER ARE SOLELY AND EXCLUSIVELY AS STATED HERE. EPI' LIABILITY, WHETHER BASED ON CONTRACT, TORT, WARRANTY, STRICT LIABILITY, OR OTHER THEORY, SHALL NOT EXCEED THE PRICE OF THE INDIVIDUAL UNIT WHOSE DEFECT OR DAMAGE IS THE BASIS OF THE CLAIM. IN NO EVENT SHALL ENVISION PERIPHERALS, INC. BE LIABLE FOR ANY LOSS OF PROFITS, LOSS OF USE OR FACILITIES OR EQUIPMENT OR OTHER INDIRECT, INCIDENTAL, OR CONSEQUENTIAL DAMAGE. IN THE UNITED STATES OF AMERICA, SOME STATES DO NOT ALLOW THE EXCLUSION OR LIMITATION OF INCIDENTAL OR CONSEQUENTIAL DAMAGES. SO THE ABOVE LIMITATION MAY NOT APPLY TO YOU. ALTHOUGH THIS LIMITED WARRANTY GIVES YOU SPECIFIC LEGAL RIGHTS. YOU MAY HAVE OTHER RIGHTS WHICH MAY VARY FROM STATE TO STATE.

In the United States of America, this limited warranty is only valid for Products purchased in the Continental United States, Alaska, and Hawaii.

Outside the United States of America, this limited warranty is only valid for Products purchased in Canada.

Information in this document is subject to change without notice.

For more details, please visit:

**USA:** <http://us.aoc.com/support/warranty>

**ARGENTINA:** <http://ar.aoc.com/support/warranty>

**BOLIVIA:** <http://bo.aoc.com/support/warranty>

**CHILE:** <http://cl.aoc.com/support/warranty>

**COLOMBIA:** <http://co.aoc.com/warranty>

**COSTA RICA:** <http://cr.aoc.com/support/warranty>

**DOMINICAN REPUBLIC:** <http://do.aoc.com/support/warranty>

**ECUADOR:** <http://ec.aoc.com/support/warranty>

**EL SALVADOR:** <http://sv.aoc.com/support/warranty>

**GUATEMALA:** <http://gt.aoc.com/support/warranty>

**HONDURAS:** <http://hn.aoc.com/support/warranty>

**NICARAGUA:** <http://ni.aoc.com/support/warranty>

**PANAMA:** <http://pa.aoc.com/support/warranty>

**PARAGUAY:** <http://py.aoc.com/support/warranty>

**PERU:** <http://pe.aoc.com/support/warranty>

**URUGUAY:** <http://pe.aoc.com/warranty>

**VENEZUELA:** <http://ve.aoc.com/support/warranty>

**IF COUNTRY NOT LISTED:** <http://latin.aoc.com/warranty>