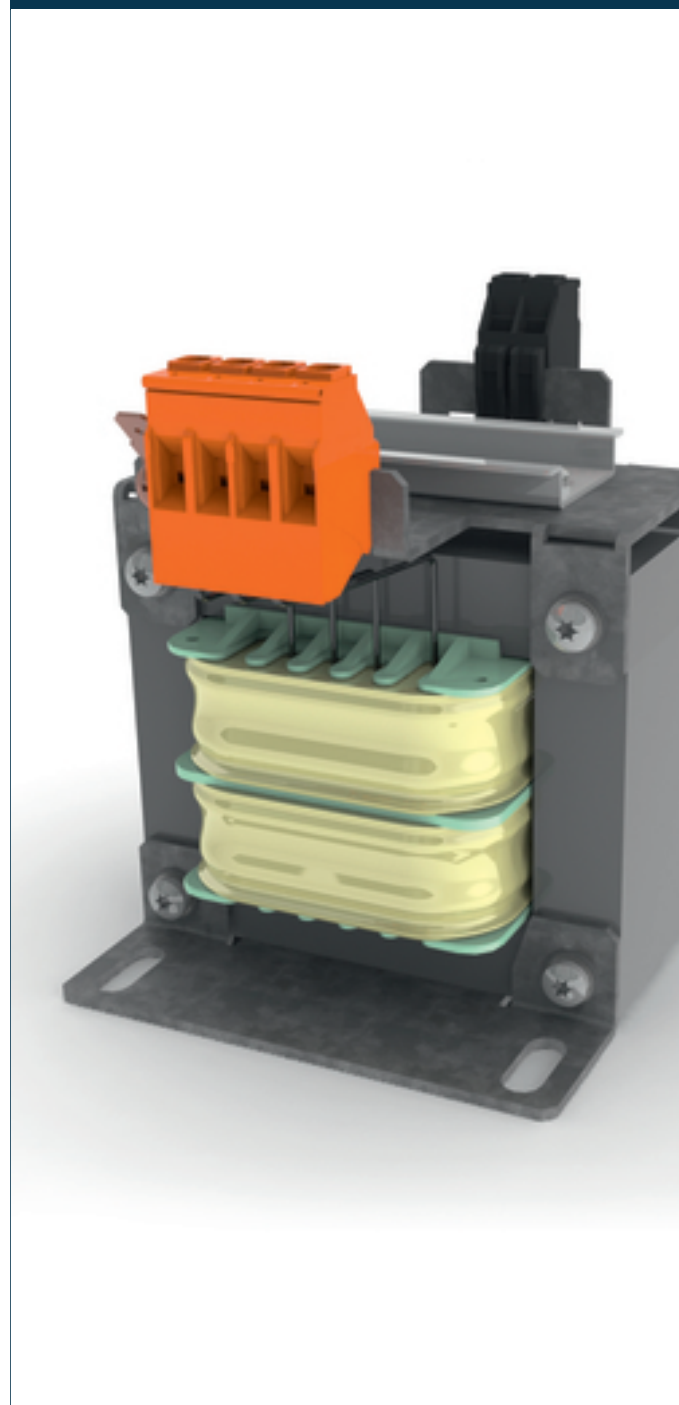


Separating transformer CT-200-048-12-2



Advantages

Fused versions available

Versions with DIN rail for additional components available

100 % finger-safe

Jumpers included for primary voltage selection

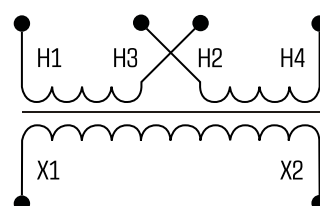
Impregnated for max. protection

Up to 2500 VA

Applications

As an industrial control transformer for adjustment of the voltage and simple electrical isolation.

Sample application



Standards

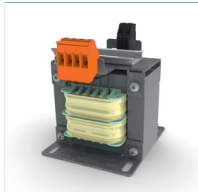


Separating transformer
to: EN 61558 part 1 with part 2-1, UL 5085-1/-2;2:2, CSA 22.2 No. 66

Approvals



UL 5085-1/-2, CSA 22.2 No.66



Separating transformer CT-200-048-12-2

Electrical data		Type	CT-200-048-12-2
<div> <div></div> <div></div> <div></div> <div></div> <div></div> <div></div> <div></div> <div></div> <div></div> <div></div> <div></div> <div></div> <div></div> <div></div> <div></div> </div>	Special features		
	Characteristics		with DIN rail for additional components
	Input		
	Rated input voltage		240 x 480 Vac
			2 x 4.3 Aac
	Frequency Range		50 - 60 Hz
	Output		
	Rated output voltage		120 Vac
	Power		2000 VA
	No-load voltage (app. x factor)		1.03
	Efficiency		95 %
	Standards		
	Classification		Separating transformer
	Approvals		
	Approvals		cURus
	Environment		
	Ambient temperature		max. 104 °F
	Type of cooling		Air natural
	Safety and protection		
	Type		Open type
	Insulation class		B, class 130
	Protection index		IP 00
	Safety class (prepared)		I
	Short circuit strength		non-short-circuit proof
	Core		EI 192/82

Mechanical data		Type	CT-200-048-12-2
<div> <div></div> <div></div> <div></div> <div></div> <div></div> <div></div> <div></div> <div></div> <div></div> <div></div> <div></div> <div></div> <div></div> <div></div> <div></div> </div>	Measures and weights		
	Weight		46,30 lbs
	Dimensions in inch		

Subject to change.