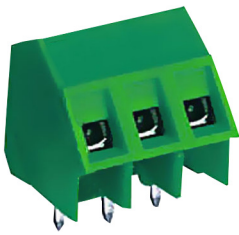


PCB Terminal Block



Specifications

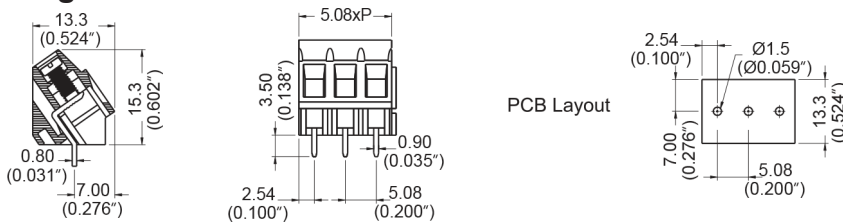
Connection in Acc. with standard EN-VDE

Nominal Current I_n : 16Amp
 Nominal Cross Section : 2.5mm²
 Maximum load current : 16A
 Insulating Material : PA

Dimensions

Pitch : 5.08mm
 Poles : 3
 Housing Material : PA 66
 Cage Clamp : Brass, Ni Plated
 Contact : Brass, Tin Plated
 Screw Thread : M2.6, Steel, Zinc Plated
 Wire Size : 12AWG to 26AWG
 Wire Strip Length : 7mm
 PCB Hole Diameter : 1.5mm
 Tightening Torque : 5lb-inch Max.
 Operating Temperature : -40°C to +105°C

Diagram



Dimensions : Millimetres (Inches)

Part Number Table

Description	Part Number
PCB Terminal Block, 5.08mm, Modular Type, 16A 300V, 3 poles	MC002066

Important Notice : This data sheet and its contents (the "Information") belong to the members of the Premier Farnell group of companies (the "Group") or are licensed to it. No licence is granted for the use of it other than for information purposes in connection with the products to which it relates. No licence of any intellectual property rights is granted. The Information is subject to change without notice and replaces all data sheets previously supplied. The Information supplied is believed to be accurate but the Group assumes no responsibility for its accuracy or completeness, any error in or omission from it or for any use made of it. Users of this data sheet should check for themselves the Information and the suitability of the products for their purpose and not make any assumptions based on information included or omitted. Liability for loss or damage resulting from any reliance on the Information or use of it (including liability resulting from negligence or where the Group was aware of the possibility of such loss or damage arising) is excluded. This will not operate to limit or restrict the Group's liability for death or personal injury resulting from its negligence. Multicomp is the registered trademark of the Group. © Premier Farnell Limited 2016.

www.element14.com
 www.farnell.com
 www.newark.com

