



### RECOMMENDED GAP WIDTH

PCB + 10.8 mm (.425 in)

### RECOMMENDED TORQUE

113 N-cm (10 in-lbs)

With "L" option 163 N-cm (14 in-lbs)

### WEIGHT

2.70 g/cm (.241 oz/in)

### MATERIALS AND FINISH

#### BRACKETS AND WEDGES

##### Material:

Aluminum Alloy 6061-T6 per  
per ASTM-B221 or AMS-QQ-  
A-200/8

##### Finish:

See finish table on opposite  
page

#### SCREW, LOCK AND FLAT WASHER

0.09-in. or 2.5-mm hex. socket  
head cap screw, depending on  
mounting configuration

##### Material:

Stainless steel

##### Finish:

Passivated per AMS2700 and  
dry film lube as required

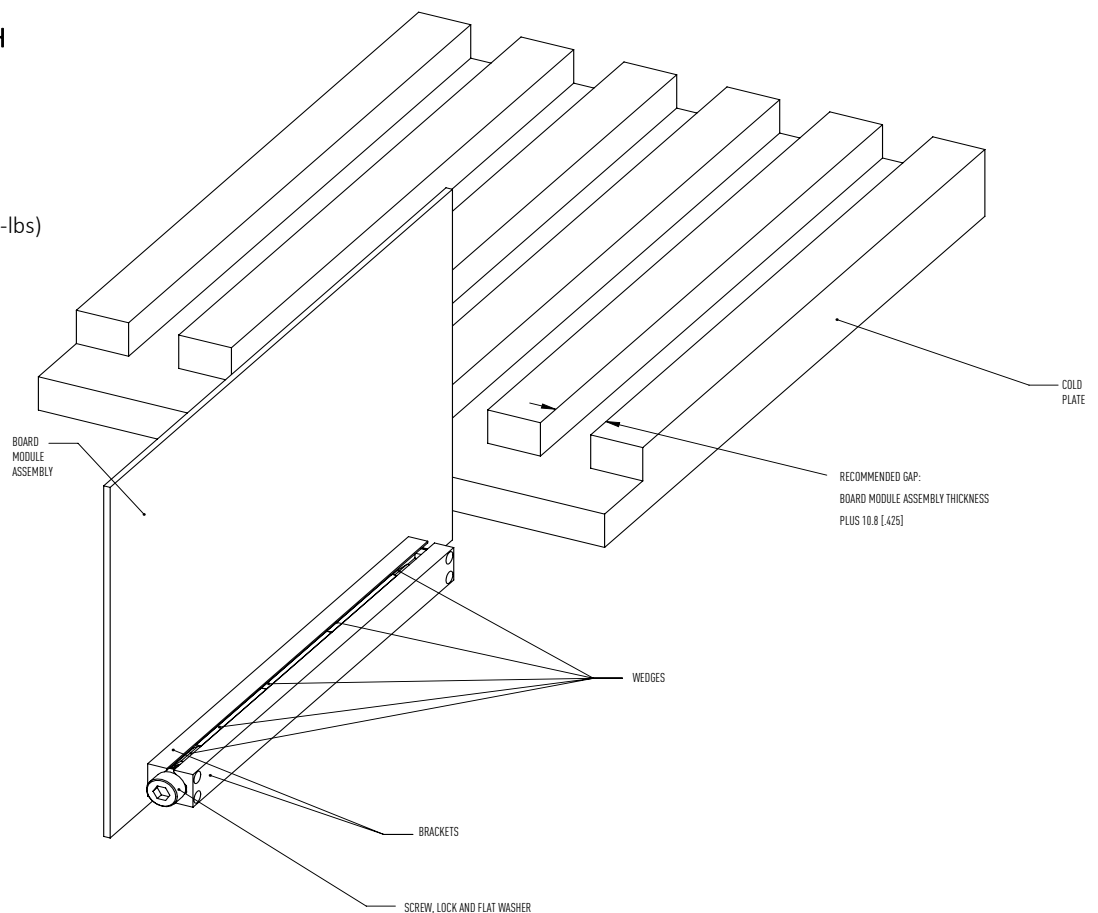
#### ROLLPINS

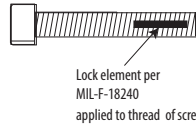
##### Material:

400 series stainless steel

##### Finish:

Passivated per AMS2700

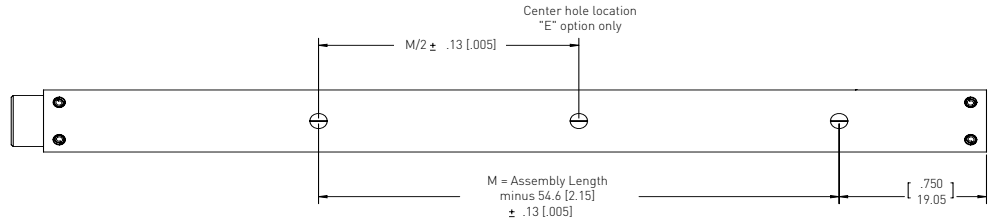
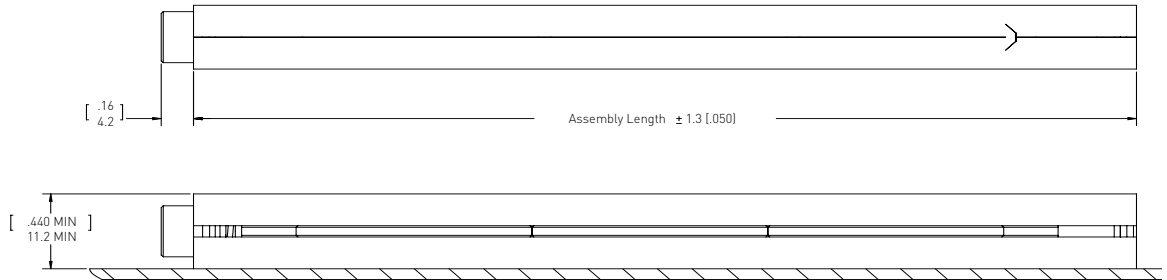
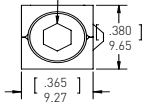




### Detail "L"

Provides prevailing torque for resistance to loosening from shock and vibration.  
Adds 50 N-cm (4 in-lbs) torque to assembly.

3.57 [.140] Hex Socket Cap  
Per ANSI/ASME B18.3



Units: mm [in]  
Unless otherwise specified:  
.xx ± .25, .x ± .5 (.xxx  
± .010, .xx ± .02) Note: Each  
piece has a tolerance of ± .010

<b>Part Number Code</b>	<b>M</b>	<b>A</b>	<b>280HT - 3.80</b>	<b>E</b>	<b>T4</b>	<b>L</b>
<b>Screw</b>						
Metric Screw Head M2.5 Hex Drive _____	<b>M</b>					
Standard Screw Head 3/32 Hex Drive _____	[Blank]					
<b>Finish</b>						
BlackAnodized _____		<b>A</b>				
Or choose from Finish Table						
<b>Length</b>						
Length in 12.7 (.50) increments _____			<b>96.52 [3.80]</b>			
_____			<b>to 325.12 [12.80]</b>			
<b>Mounting</b>						
Additional Center Mounting Hole _____				<b>E</b>		
None _____				[Blank]		
Mounting Options - through mounting holes _____					<b>T4</b>	
Or choose from Mounting Method Table						
<b>Lock Patch</b>						
Lock Patch _____						<b>L</b>
None _____						[Blank]

Part Number Code example: A280HT-4.80T4  
Series 280HT Card-Lok five piece 121.9 (4.80) long with black anodize finish, 4-40 tapped hole for mounting.

### FINISH TABLE

CODE LETTER	SURFACE FINISH
"A"	BLACK ANODIZE PER MIL-A-8625 TYPE II, CLASS 2
"HA"	HARD BLACK ANODIZE PER MIL-A-8625 TYPE III, CLASS 2
"EN"	ELECTROLESS NICKEL PER MIL-C-26074 CLASS 4, GRADE B, BRIGHT

### MOUNTING METHOD TABLE

CODE LETTER	METHOD
"T4"	4-40 TAPPED HOLE
"TM3"	M3 x 0.50 TAPPED HOLE