



Series 265HC Card Lok

RECOMMENDED GAP WIDTH

PCB + 6.35 mm (.250 in)

RECOMMENDED TORQUE

68 N-cm (6 in-lbs)
With "L" option 90 N-cm (8 in-lbs)

WEIGHT

.89 g/cm (.080 oz/in)

MATERIALS AND FINISH

BODIES AND WEDGES

Material:

Aluminum alloy 6061-T6 per per ASTM-B221 or AMS-QQ-A-200/8

Finish:

See finish table on opposite page

SHAFT

Material:

Alluminum alloy 7075-T6 per ASTM B221 or AMS-QQ-A-200/11

Finish:

See finish table on opposite page

SCREW

.09-in. or 2.5-mm hex. socket head

Material:

300 series stainless steel with dry film lube per MIL-L-46010

ROLLPINS AND FLAT WASHER

Material:

400 series stainless steel

Finish:

Passivated per AMS2700

LOCK WASHER

Material:

MS35338-135

Finish:

Passivated per AMS2700

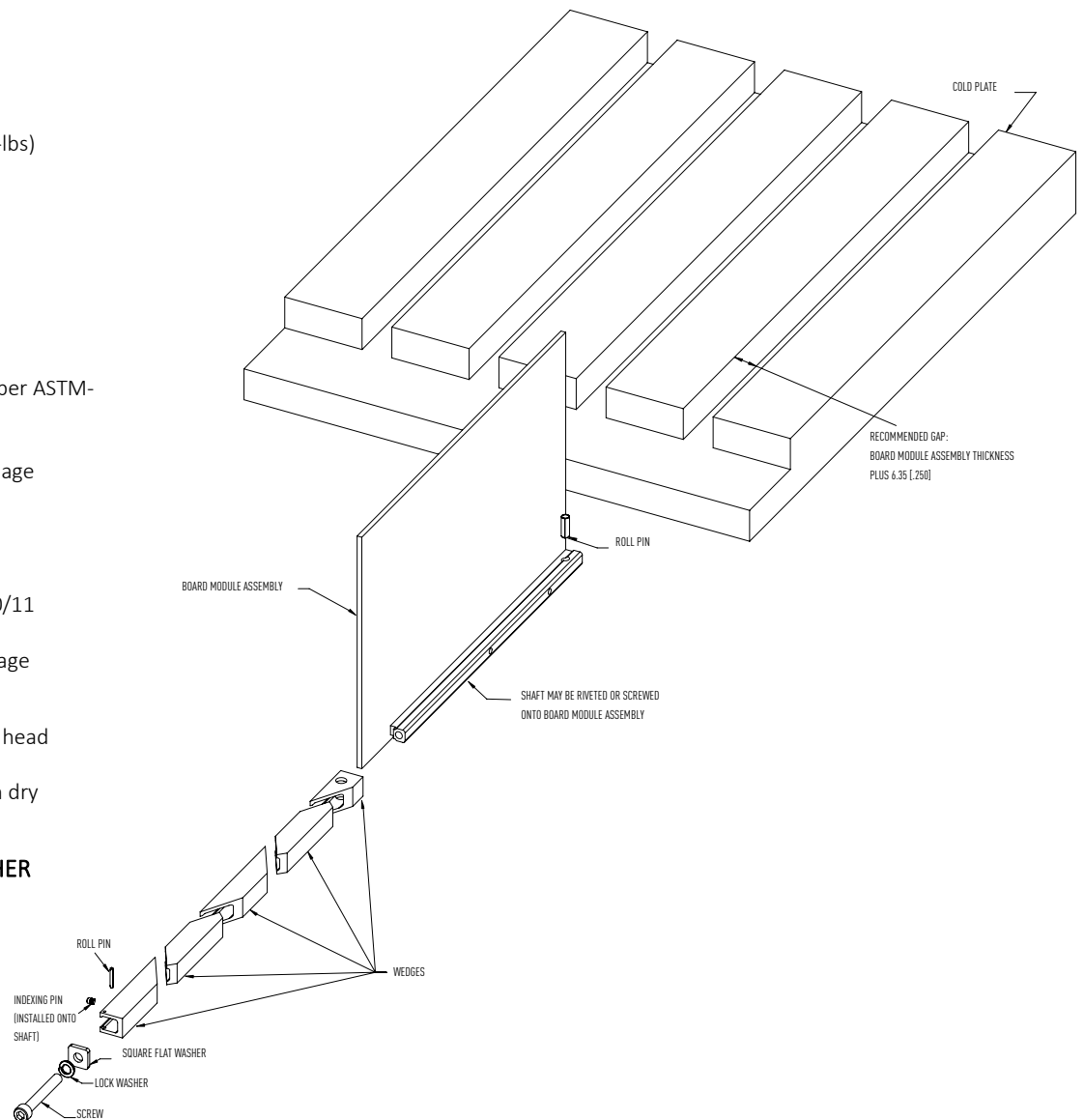
INDEXING PINS

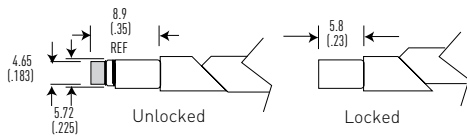
Material:

Aluminum alloy 6061-T6

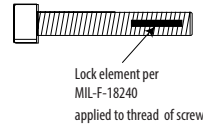
Finish:

See finish table on opposite page

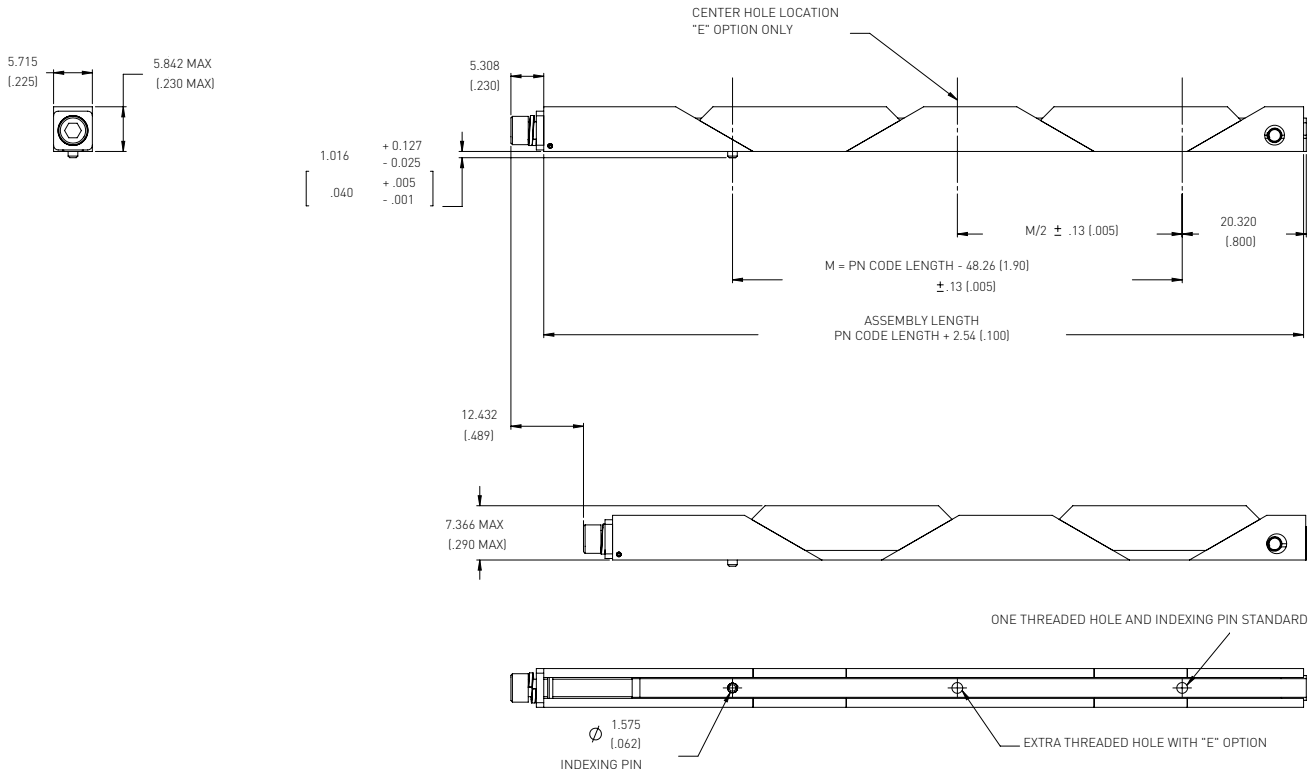




Detail "V"
Provides visual lock indication



Detail "L"
Provides prevailing torque for resistance to loosening from shock and vibration. Adds 22 N-cm (2 in-lbs) torque to assembly.



Part Number Code		Series 265HC Card-Lok Five Piece	
Prefix options	Metric Screw Head M2.5 Hex Drive _____ M	M	V
	Standard Screw Head 3/32 Hex Drive _____ [blank]	[blank]	A
	Visual Indicator _____ V		265HC
	No Visual Indicator _____ [blank]		- 3.80
	Black Anodize _____ A		E
	or choose from Finish Table _____ see table		H
Suffix options	Length in 12.7 (.50) increments _____ 96.52 (3.80)		L
	_____ to 172.72 (6.80)		
	Additional Center Mounting Hole _____ E		
	None _____ [blank]		
	Mounting Options - through mounting holes _____ H		
	or choose from Mounting Method Table _____ see table		
	Lock Element _____ L		
	None _____ [blank]		

FINISH TABLE	
Code Letter	Finish
"A"	Black Anodize per Mil-A-8625 Type II, Class 2
"HA"	Hard Black Anodize per Mil-A-8625 Type III, Class 2
"EN"	Electroless Nickel per Mil-C-26074 Class 4, Grade B, Bright

MOUNTING METHOD TABLE	
Code Letter	Method
"H"	Ø1.73/1.85 (.068/.073) dia. through holes countersink 100° x 1.50 (.06) deep
"T0"	0-80 tapped hole
"T2"	2-56 tapped hole
"TM2"	M2 x 0.40 tapped hole
"TM2.5"	M2.5 x 0.45 tapped hole

Part Number Code Example:
MVA265HC-3.80ET2L
Series 265HC Card-Lok five piece 96.52 (3.80) long black anodized with M2.5 hex drive, visual indicator, mounting holes tapped for 2-56 thread, with locking element.