



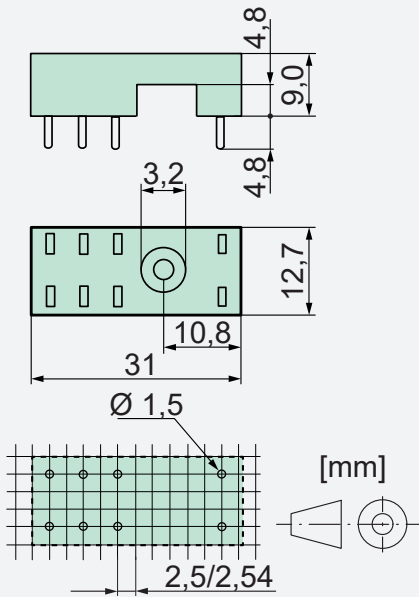
## PCB socket SRP-SGR2

### Socket data

- With plastic hold down clip
- Soldering tags for PCB



### Dimensions



### Technical data

|                                |                |
|--------------------------------|----------------|
| Rated current                  | 2x8A           |
| Rated voltage                  | 300VAC         |
| Test voltage coil/contacts     | 4000Veff       |
| Insulation class (IEC 60664-1) | 250VAC         |
| Creepage resistance            | CTI 250        |
| Weight                         | approx. 4g     |
| Ambient temperature            | -40°C to +70°C |
| Packing unit                   | 100 pcs        |
| Approvals                      | UL, cUL        |
| UL File                        | E113714        |

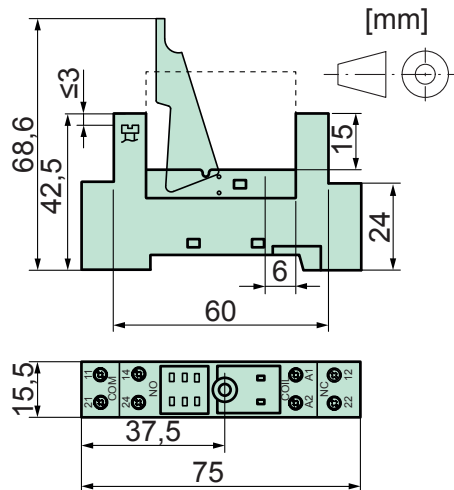
## DIN rail socket SRD-SGR2

### Socket data

- With plastic grip and marking tag (1 pc)
- Screw terminals
- Assembly on DIN rail 35mm or single-hole mounting with M3 screw



### Dimensions



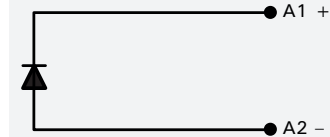
### Technical data

|  |                      |
|--|----------------------|
| Rated current                            | 2x8A                 |
| Rated voltage                            | 300VAC               |
| Test voltage coil/contacts               | 4000Veff             |
| Insulation class (IEC 60664-1)           | 250VAC               |
| Creepage resistance                      | CTI 250              |
| Weight                                   | approx. 40g          |
| Ambient temperature                      | -25°C to +70°C       |
| Cross sections for connection with wires | 2x2,5mm <sup>2</sup> |
| end sleeves for strands                  | 2x1,5mm <sup>2</sup> |
| Maximum torque                           | 0,8Nm                |
| Packing unit                             | 20 pcs               |
| Approvals                                | UL, cUL              |
| UL File                                  | E113714              |

## Modules for SRD-SGR2

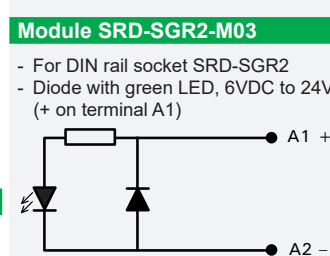
### Module SRD-SGR2-M01

- For DIN rail socket SRD-SGR2
- Diode 6VDC to 230VDC (+ on terminal A1)



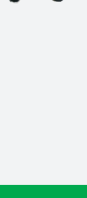
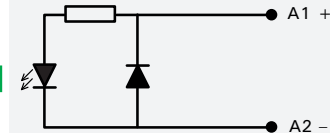
### Module SRD-SGR2-M02

- For DIN rail socket SRD-SGR2
- Diode with red LED, 6VDC to 24VDC (+ on terminal A1)



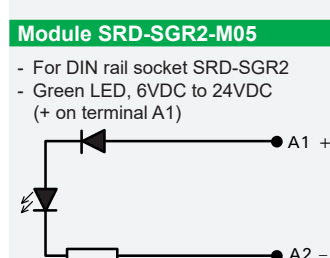
### Module SRD-SGR2-M03

- For DIN rail socket SRD-SGR2
- Diode with green LED, 6VDC to 24VDC (+ on terminal A1)



### Module SRD-SGR2-M04

- For DIN rail socket SRD-SGR2
- Red LED, 6VDC to 24VDC (+ on terminal A1)



### Module SRD-SGR2-M05

- For DIN rail socket SRD-SGR2
- Green LED, 6VDC to 24VDC (+ on terminal A1)

