

# Data Sheet

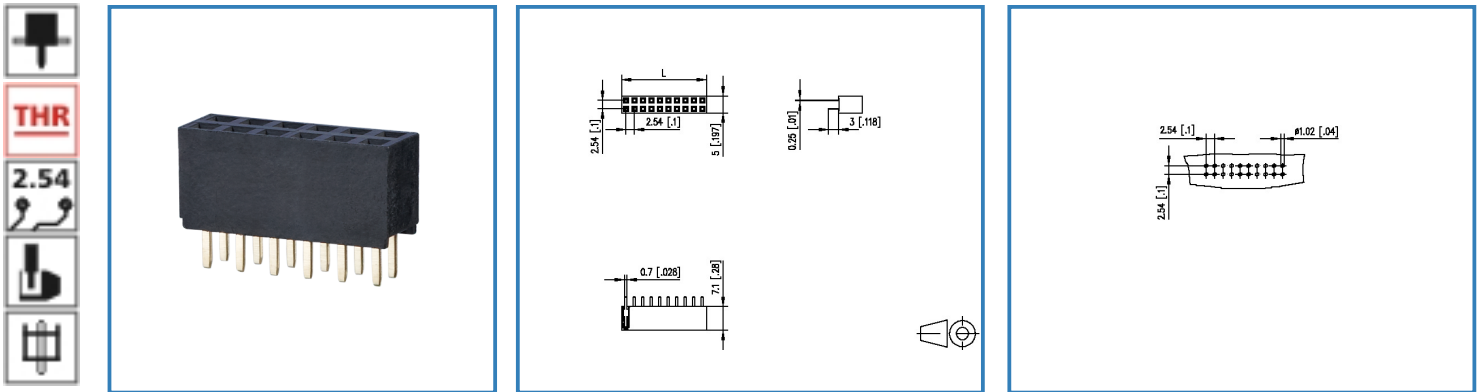
## FR202xxVBDN

FR202xxVBDN

xx=number of poles

2017/05/05

### Illustration



see enlarged drawing at the end of the document

### Product specification

- female connector, THR solderable
- centerline 2.54 mm, direction of connection vertical 0°
- closed ends
- color black
- dual rows

# Data Sheet

## FR202xxVBDN

### Technical Data

#### General Data

Solder pin length	3.00 mm
min. number of poles	2
max. number of poles	40
protection category	IP 00

#### Approvals

Rated current	3 A
---------------	-----

#### Material

insulating material	PA6
Glow-Wire Flammability GWFI	-
Glow-Wire Flammability GWIT	-
contact pin material	CuSn
contact pin surface	Ni + Au Flash

#### Climatic properties

upper limit temperature	105 °C
lower limit temperature	-40 °C

#### General

solderability	Acc. to IPC/JEDEC J-STD-020D-MSL 1
Tolerance	ISO 2768 -mH

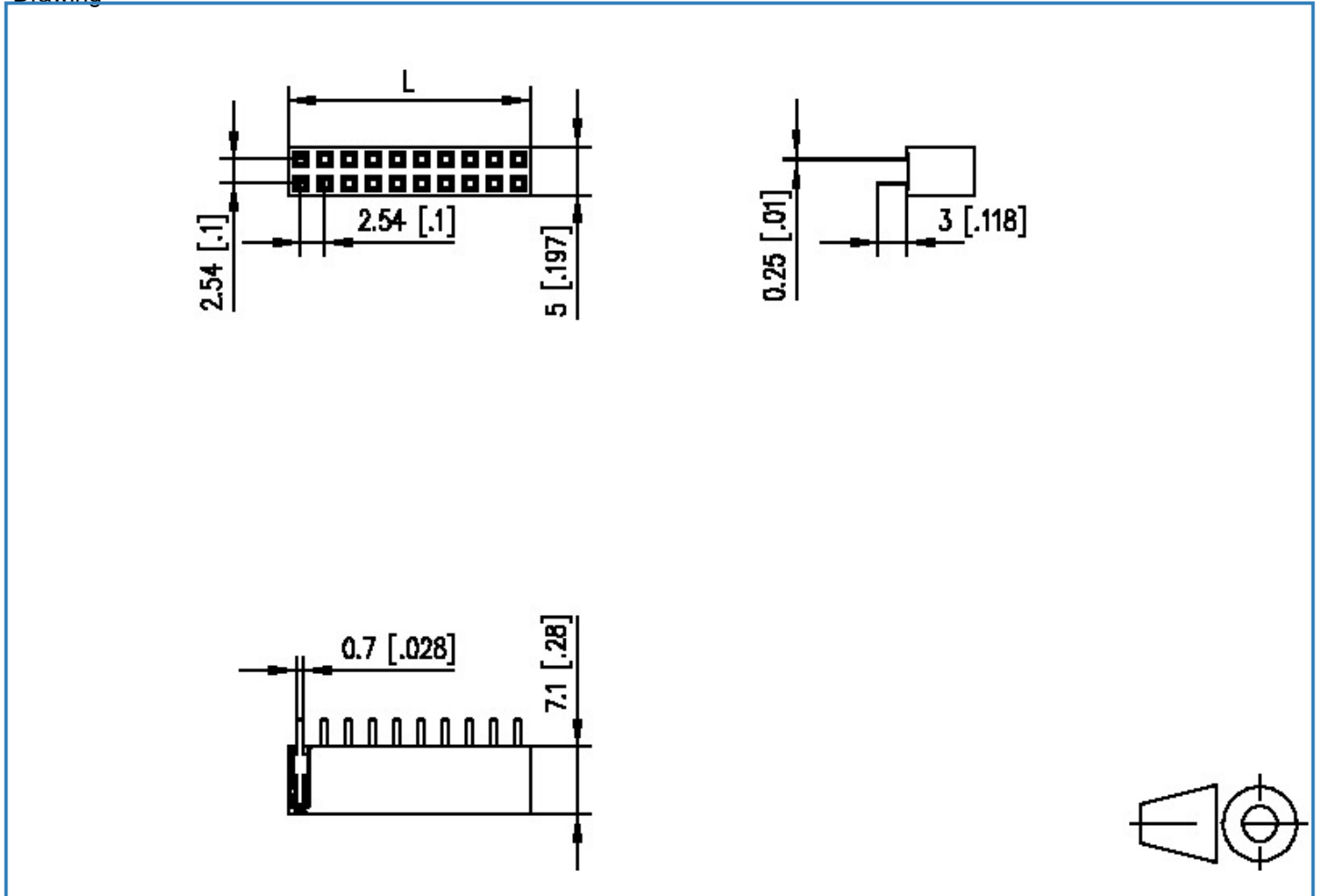


# Data Sheet

## FR202xxVBDN

### Illustration

#### Drawing



$$L = (\text{pole size} - 1) \times \text{centerline} + 3.04 [0.12]$$

# Data Sheet

## FR202xxVBDN

Page 4/4

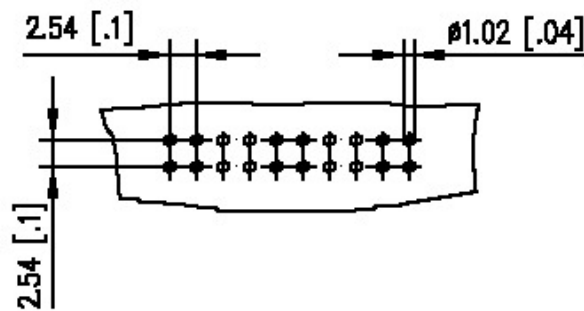
P/N

FR202xxVBDN

xx=number of poles

2017/05/05

### PCB Layout



© 2017 METZ CONNECT - Technische Änderungen vorbehalten! Subject to modifications! Sous réserve de modifications techniques!

